

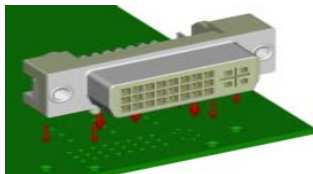
MMT OFFER A COMPLETE LINE OF DVI CONNECTOR FOR YOUR VIDEO APPLICATION

DVI (DIGITAL VIDEO INTERFACE) is a specification created by the Digital Display Working Group(DDWG) to accommodate analog and digital monitors with a single connector. Using a DVI connector and port, a digital signal that is sent to an analog monitor is converted into an analog signal. If the monitor is a digital monitor, such as a flat panel display, no conversion is necessary. Many Video monitors now include a DVI connection and many video adapters include a DVI port along with, or instead of, the traditional 15-pin Video Graphics Array (VGA) port. There are three different DVI configurations :

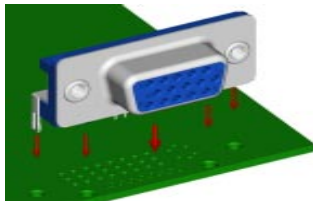
- DVI-A (Analog) : designed for analog signal
- DVI-D (Digital) : designed for digital signal, without RGB and grounding pins
- DVI-I (Integrated) : designed for both analog and digital signals, with RGB and grounding pins

NEW SLIM VGA CONNECTOR DESIGN

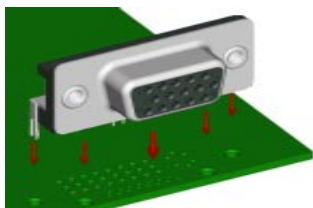
OUR BOARD LOCK DESIGN FOR SLIM VGA CONNECTOR IS TO SHARE THE SAME FOOT PRINT AS THE DVI BOARD LOCK AND PLASTIC POST, AND THE CONTACT FOOT PRINT ARE BETWEEN THE DVI CONTACT AND THE EDGE OF THE BOARD, WHICH SAVE YOUR PCB REAL ESTATE AND INCREASE YOUR DESIGN FLEXIBILITIES. YOU CAN EITHER INSTALL A DVI CONNECTOR OR A STANDARD VGA CONNECTOR.



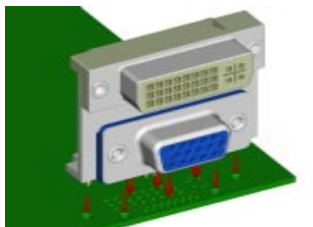
STANDARD DVI CONNECTOR
DIGITAL
INTEGRATED



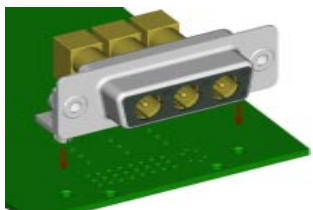
SLIM VGA BLUE COLOR, IT SHARE THE SAME BOARD LOCK AND PLASTIC POST POSITION AS DVI, THE CONTACT FOOT PRINT LOCATED BETWEEN DVI CONTACT AND THE EDGE OF THE BOARD



SLIM VGA BLACK COLOR, IT SHARE THE SAME BOARD LOCK AND PLASTIC POST POSITION AS DVI. AVAILABLE IN BLACK AND PC99 PANTONE BLUE COLOR



STACK DVI+VGA CONNECTOR, IT SHARE THE SAME FOOT PRINT AND BOARD LOCK LOCATION OF THE SEPERATE DVI AND VGA AS SHOWN ABOVE



LONG BODY 3W3 CONNECTOR FOR HIGH -END GRAPHIC APPLICATIONS, BOTH 75 OHM AND 50 OHM ARE AVAILABLE, MATING CONNECTOR FOR THE CABLE ASSEMBLY IS ALSO AVAILABLE

PATENT PENDING

DVI000-PaF29G15t-2a



DVI-INTEGRATED WITH RGB AND GROUND CONTACT FOR ANALOG RIGHT ANGLE

DVI000-PaF25G15t-2a



DVI- DIGITAL W/O RGB AND GROUND CONTACT FOR ANALOG RIGHT ANGLE

HDB140-PaM5Gft-2a



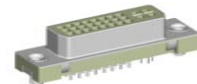
15 PIN, HIGH DENSITY BLACK, MALE, D-SUB

HDB141-PaM15Gft-2a



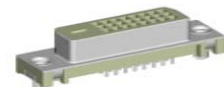
15 PIN, HIGH DENSITY BLUE, MALE D-SUB

DVI000-PF29G15t-2a



DVI-INTEGRATED WITH RGB AND GROUND CONTACT FOR ANALOG STRAIGHT

DVI000-PF25G15t-2a



DVI-DIGITAL W/O RGB AND GROUND CONTACT FOR ANALOG STRAIGHT

HDB140-PaF25Gft-2a



15 PIN, FEMALE, D-SUB BLACK, VGA CONNECTOR

HDB141-PaF15Gft-2a



15 PIN, FEMALE, D-SUB BLUE, VGA CONNECTOR



DVI TO BNC CABLE



VGA TO DVI CABLE



DVI TO DVI CABLE