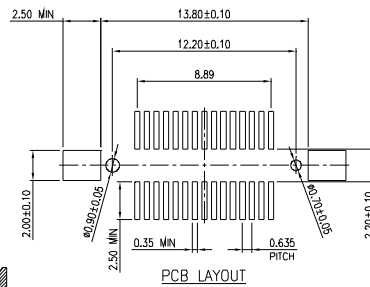
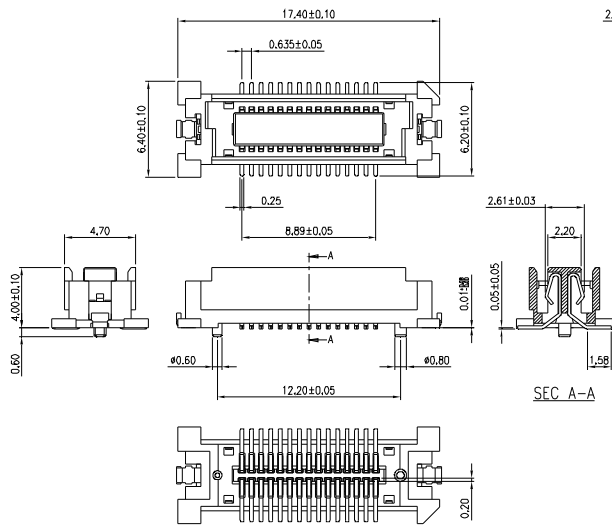


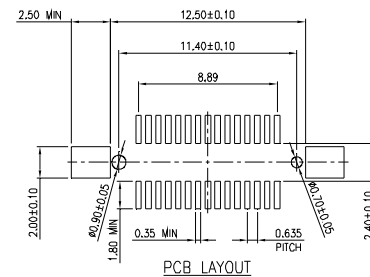
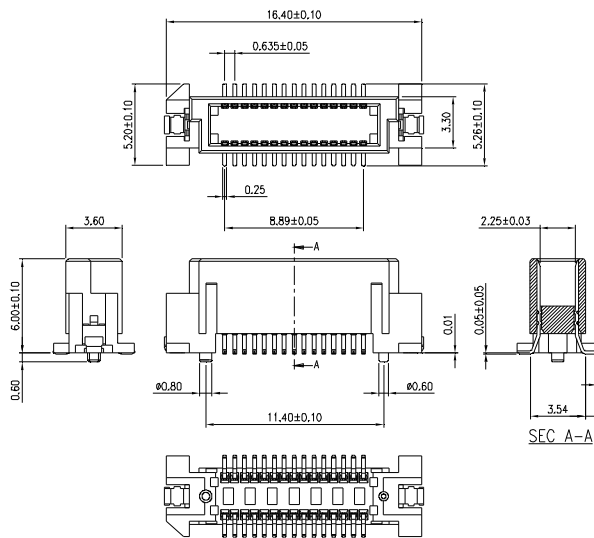
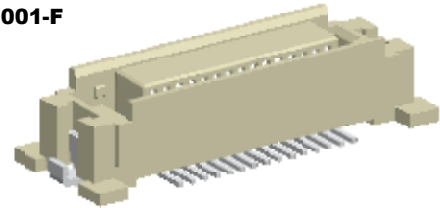
MMI

**BOARD TO BOARD
PITCH: 0.635mm**

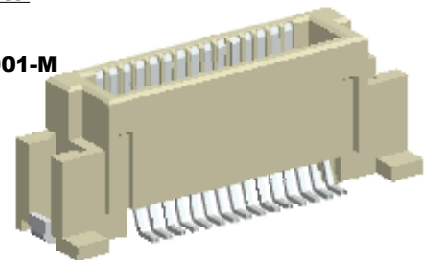
0.635mm BOARD TO BOARD - SURFACE MOUNT TYPE - Pt



BTBj001-F



BTBj001-M



BTB	j	001	-	Pt	X	30	GX
BOARD TO BOARD	PITCH j: 0.635mm	SERIES NO.		PCB TYPE Pt: SURFACE MOUNT TYPE	GENDER M: MALE F: FEMALE	NO. OF PINS 2x15	CONTACT PLATING OPTION Gt: GOLD FLASH ON CONTACT, TIN PLATED ON SOLDER TAIL G10t: 10µ" GOLD ON CONTACT, TIN PLATED ON SOLDER TAIL G15t: 15µ" GOLD ON CONTACT, TIN PLATED ON SOLDER TAIL G30t: 30µ" GOLD ON CONTACT, TIN PLATED ON SOLDER TAIL

SPECIFICATIONS

CONTACT RATING: 0.5 AMPS
 INSULATOR RESISTANCE: 1000Ω MIN.
 DIELECTRIC WITHSTANDING: AC 150V
 OPERATING TEMPERATURE: -40°C~+105°C

MATERIALS

INSULATOR MATERIAL: LCP 30% G/F, UL 94V-0
 CONTACT MATERIAL: COPPER ALLOY (T=0.20)
 FITTING NAIL: COPPER ALLOY, (T=0.30)
 FINISH: GOLD PLATED ON CONTACT, TIN PLATED ON SOLDER TAIL

NOTE : SOME SIZES, STYLES AND OPTION ARE NON-STANDARD, NON-CANCELLABLE, NON-RETURNABLE