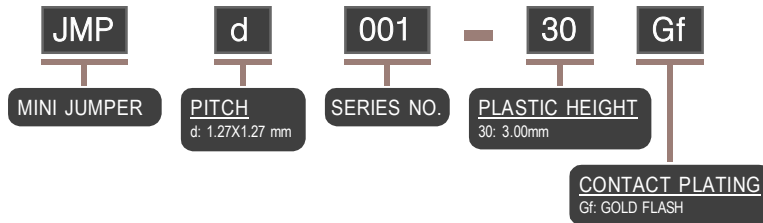
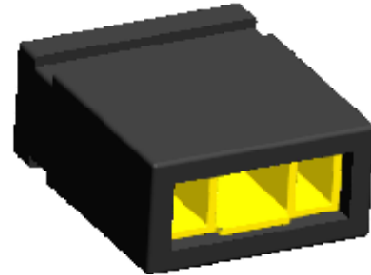
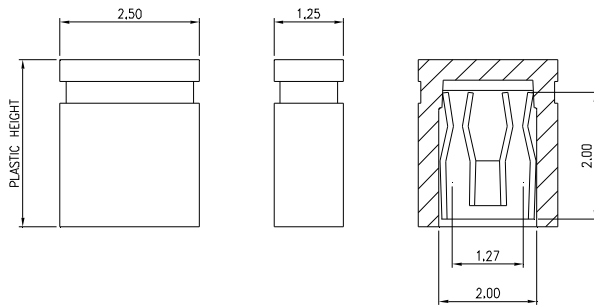


MMI

JUMPER
PITCH: 1.27X1.27mm

MINI JUMPER - 1.27X1.27mm - JMPd



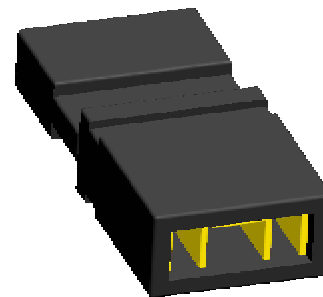
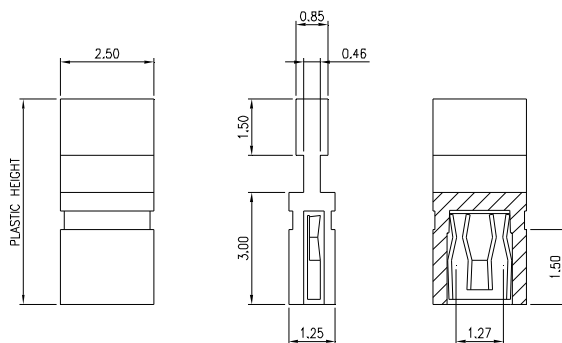
SPECIFICATIONS

CONTACT RATING: 2 AMPS
 INSULATOR RESISTANCE: 1000 OHM MIN.
 DIELECTRIC WITHSTAND VOLTAGE: AC 650V
 OPERATING TEMPERATURE: -40° C--+105° C

MATERIALS

CONTACT MATERIAL: PHOSPHOR BRONZE
 INSULATOR MATERIAL: NYLON 66 U94V-0
 FINISH: GOLD FLASH

MINI JUMPER - 1.27X1.27mm - JMPd



SPECIFICATIONS

CONTACT RATING: 2 AMPS
 INSULATOR RESISTANCE: 1000 OHM MIN.
 DIELECTRIC WITHSTAND VOLTAGE: AC 650V
 OPERATING TEMPERATURE: -40° C--+105° C

MATERIALS

CONTACT MATERIAL: PHOSPHOR BRONZE
 INSULATOR MATERIAL: NYLON 66 U94V-0
 FINISH: GOLD FLASH

NOTE : SOME SIZES, STYLES AND OPTION ARE NON-STANDARD, NON-CANCELLABLE, NON-RETURNABLE