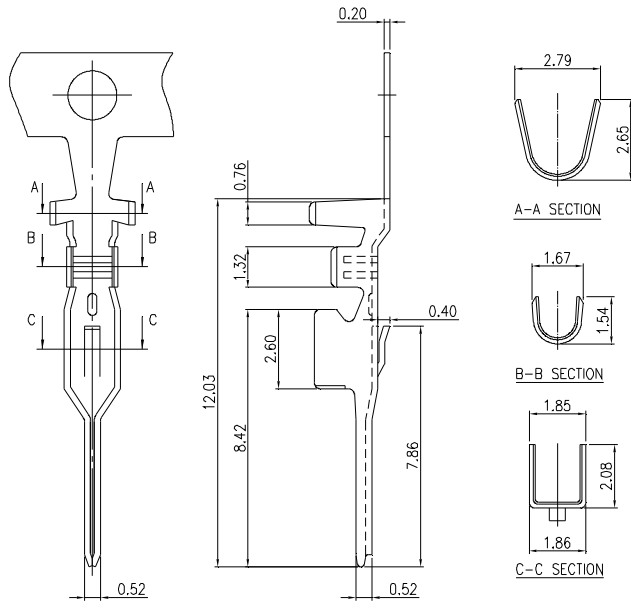


MMI

**WAFER, HOUSING & TERMINAL
PITCH: 3.50x3.50mm**

TERMINAL- MCy 001 (MALE)



MC **y** **001** - **T** **M**
 WAFER SERIES SERIES NO. TERMINAL GENDER
 M: MALE
MATING HOUSING PITCH
 y: 3.50 mm

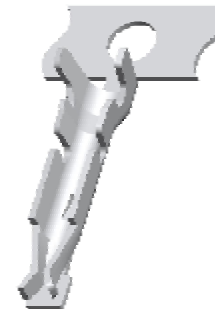
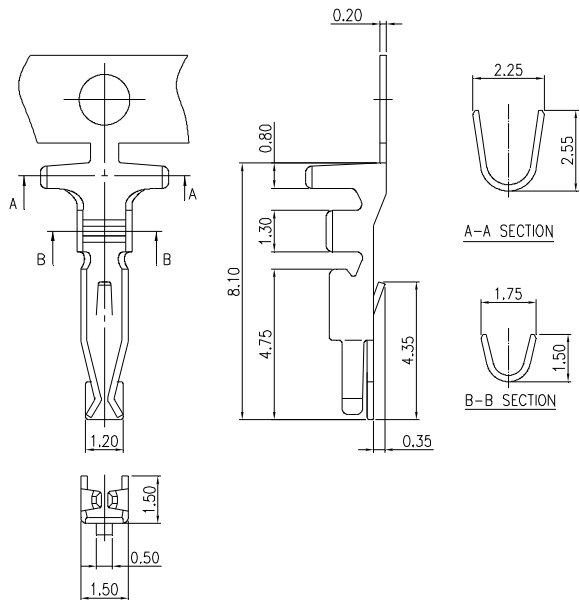
SPECIFICATIONS

VOLTAGE RATING: 1400V AC/DC
 CURRENT RATING: 1A AC/DC
 WITHSTAND VOLTAGE: 3800V AC/MINUTE
 INSULATOR RESISTANCE: 1000M OHM MIN.
 TEMPERATURE RANGE: -25°C ~ +85°C
 CONTACT RESISTANCE: 20m OHM MAX.
 APPLICABLE BOARD THICKNESS: 0.80 ~ 1.60mm
 APPLICABLE WIRE: AWG #24 ~ #30

MATERIALS

BASE: PHOSPHOR BRONZE
 FINISH: TIN PLATED
 THICKNESS: 0.20mm
 INSULATOR O.D.: 1.80mm

TERMINAL- MCy 001 (FEMALE)



MC **y** **001** - **T** **F**
 WAFER SERIES SERIES NO. TERMINAL GENDER
 F: FEMALE
MATING HOUSING PITCH
 y: 3.50 mm

SPECIFICATIONS

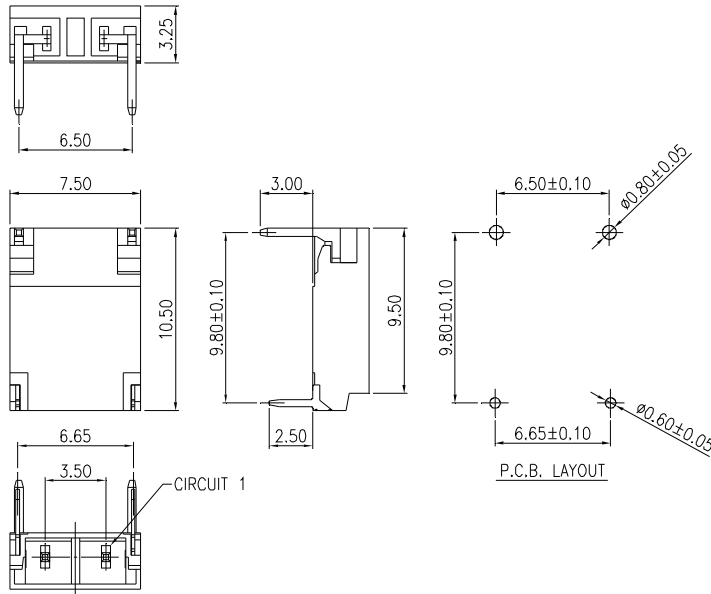
VOLTAGE RATING: 1400V AC/DC
 CURRENT RATING: 1A AC/DC
 WITHSTAND VOLTAGE: 3800V AC/MINUTE
 INSULATOR RESISTANCE: 1000M OHM MIN.
 TEMPERATURE RANGE: -25°C ~ +85°C
 CONTACT RESISTANCE: 20m OHM MAX.
 APPLICABLE BOARD THICKNESS: 0.80 ~ 1.60mm
 APPLICABLE WIRE: AWG #24 ~ #30

MATERIALS

BASE: PHOSPHOR BRONZE
 FINISH: TIN PLATED
 THICKNESS: 0.20mm
 INSULATOR O.D.: 1.60mm

NOTE : SOME SIZES, STYLES AND OPTION ARE NON-STANDARD, NON-CANCELLABLE, NON-RETURNABLE

3.50 mm WAFER - MCy 001 RIGHT ANGLE TYPE - Pa



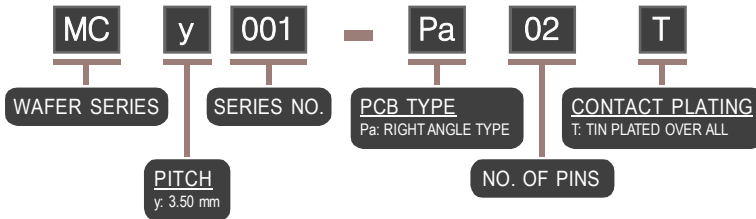
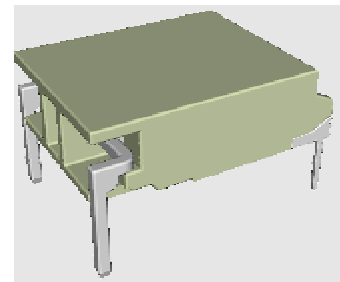
SPECIFICATIONS

VOLTAGE RATING: 1400V AC/DC
 CURRENT RATING: 1A AC/DC
 WITHSTAND VOLTAGE: 3800V AC/MINUTE
 INSULATOR RESISTANCE: 1000M OHM MIN.
 TEMPERATURE RANGE: -25°C ~ +85°C
 CONTACT RESISTANCE: 20m OHM MAX.

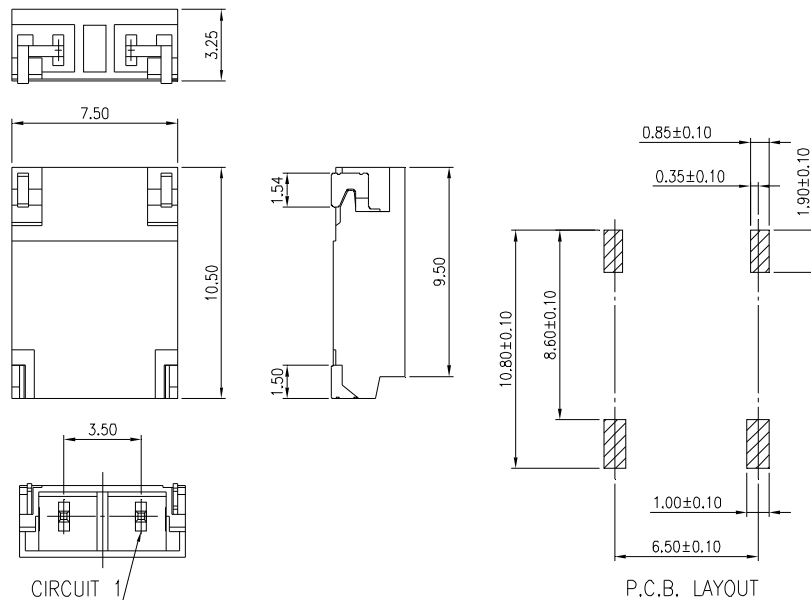
MATERIALS

BASE: NYLON 66, UL 94V-0
 CONTACT: BRASS, TIN PLATED
 SOLDER TABS: BRASS, TIN PLATED

MATING CONNECTOR	
PRODUCT	PART NO.
HOUSING	MCy001-02-HF
TERMINAL	MCy001-TF



3.50 mm WAFER - MCy 001 RIGHT ANGLE SURFACE MOUNT TYPE - Rt



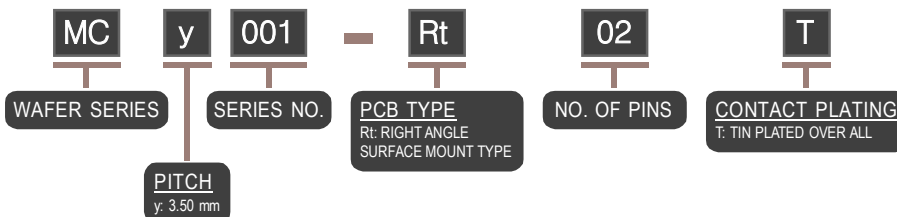
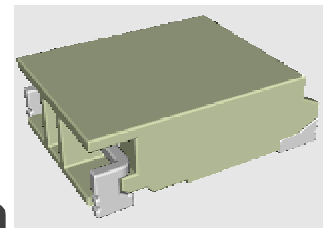
SPECIFICATIONS

VOLTAGE RATING: 1400V AC/DC
 CURRENT RATING: 1A AC/DC
 WITHSTAND VOLTAGE: 3800V AC/MINUTE
 INSULATOR RESISTANCE: 1000M OHM MIN.
 TEMPERATURE RANGE: -25°C ~ +85°C
 CONTACT RESISTANCE: 20m OHM MAX.

MATERIALS

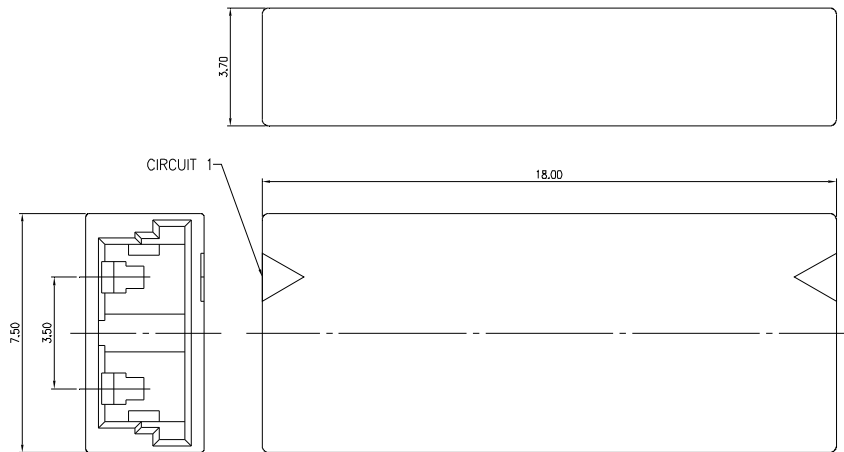
BASE: NYLON 66, UL 94V-0
 CONTACT: BRASS, TIN PLATED
 SOLDER TABS: BRASS, TIN PLATED

MATING CONNECTOR	
PRODUCT	PART NO.
HOUSING	MCy001-02-HF
TERMINAL	MCy001-TF



NOTE : SOME SIZES, STYLES AND OPTION ARE NON-STANDARD, NON-CANCELLABLE, NON-RETURNABLE

3.50 mm HOUSING - MCy 001 (MALE)



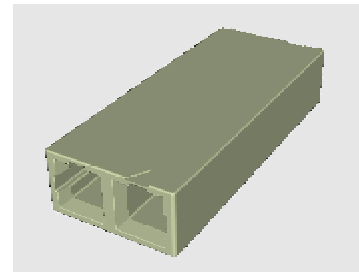
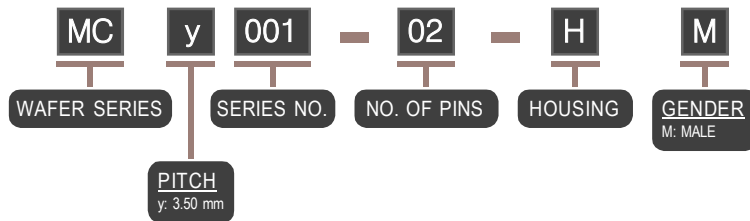
SPECIFICATIONS

VOLTAGE RATING: 1400V AC/DC
 CURRENT RATING: 1A AC/DC
 WITHSTAND VOLTAGE: 3800V AC/MINUTE
 INSULATOR RESISTANCE: 1000M OHM MIN.
 TEMPERATURE RANGE: -25°C ~ +85°C
 CONTACT RESISTANCE: 20m OHM MAX.

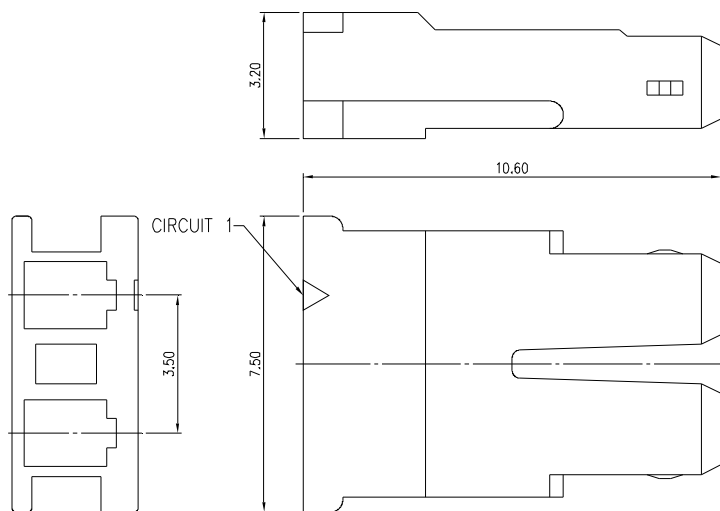
MATERIALS

BASE: NYLON 66, UL 94V-0

MATING CONNECTOR	
PRODUCT	PART NO.
HOUSING	MCy001-02-HF
TERMINAL	MCy001-TM



3.50 mm HOUSING - MCy 001 (FEMALE)



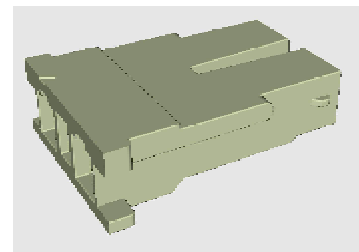
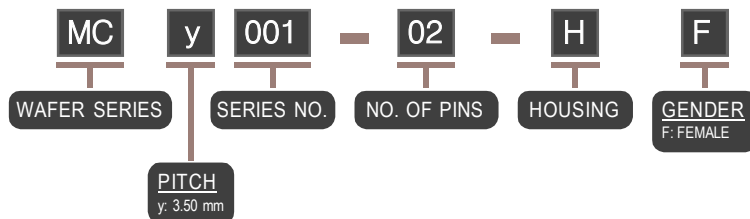
SPECIFICATIONS

VOLTAGE RATING: 1400V AC/DC
 CURRENT RATING: 1A AC/DC
 WITHSTAND VOLTAGE: 3800V AC/MINUTE
 INSULATOR RESISTANCE: 1000M OHM MIN.
 TEMPERATURE RANGE: -25°C ~ +85°C
 CONTACT RESISTANCE: 20m OHM MAX.

MATERIALS

BASE: NYLON 66, UL 94V-0

MATING CONNECTOR	
PRODUCT	PART NO.
HOUSING	MCy001-02-HM
TERMINAL	MCy001-TF



NOTE : SOME SIZES, STYLES AND OPTION ARE NON-STANDARD, NON-CANCELLABLE, NON-RETURNABLE