

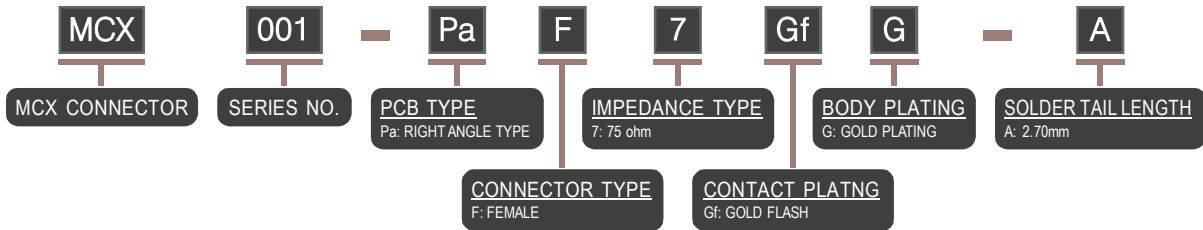
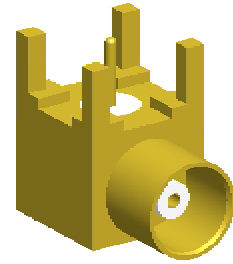
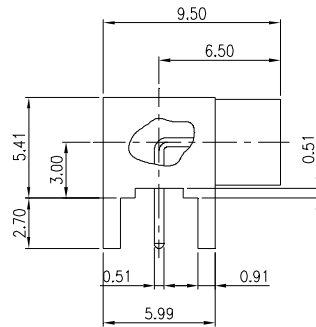
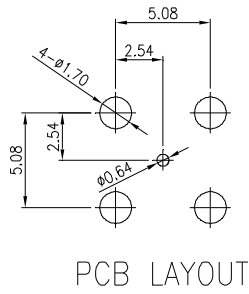
MMI RF COAXIAL CONNECTOR

- MCX - **MICRO COAXIAL CONNECTOR**

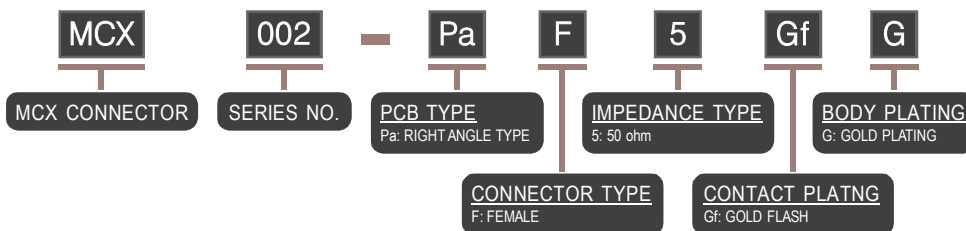
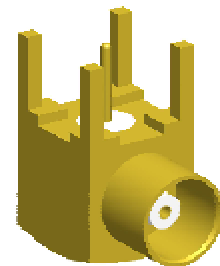
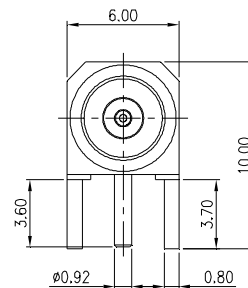
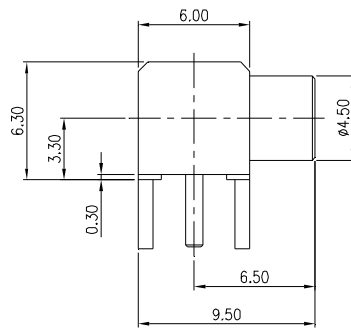
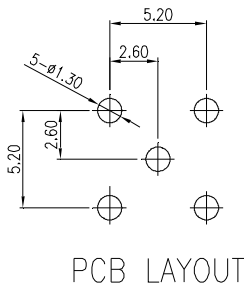
TERMINAL TYPE

- Pa : PCB TYPE, RIGHT ANGLE TYPE
 - Pt : PCB TYPE, SURFACE MOUNT TYPE
 - P : PCB TYPE, STRAIGHT TYPE
-

MCX CONNECTOR - RIGHT ANGLE TYPE - Pa

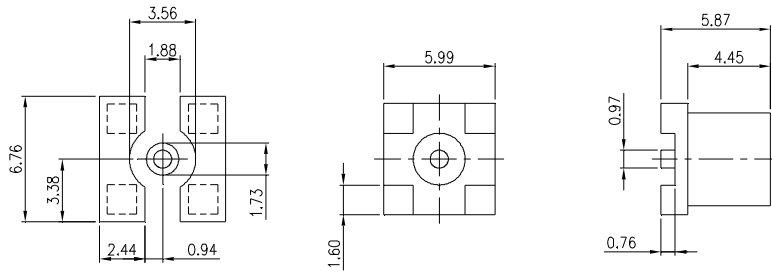


MCX CONNECTOR - RIGHT ANGLE TYPE - Pa

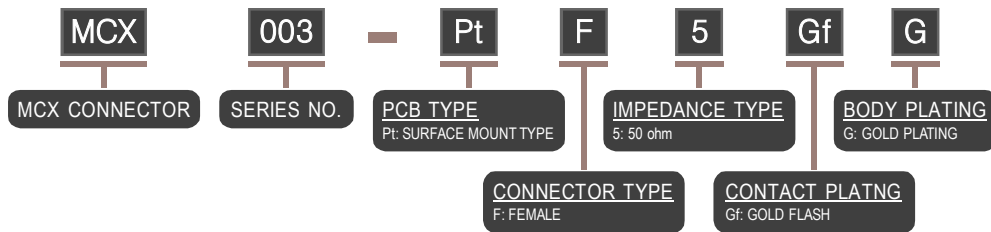
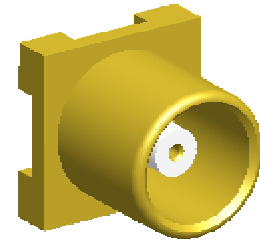


NOTE : SOME SIZES, STYLES AND OPTION ARE NON-STANDARD, NON-CANCELLABLE, NON-RETURNABLE

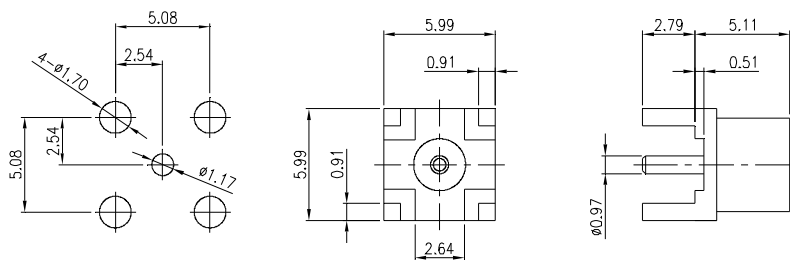
MCX CONNECTOR - SURFACE MOUNT TYPE - Pt



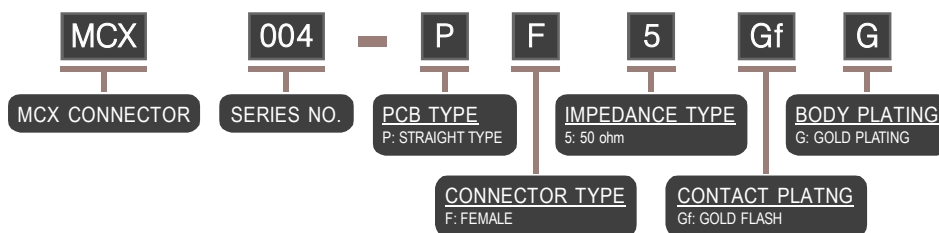
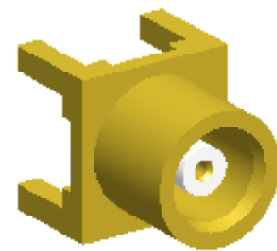
LAND PATTERN



MCX CONNECTOR - STRAIGHT TYPE - P



PCB LAYOUT



NOTE : SOME SIZES, STYLES AND OPTION ARE NON-STANDARD, NON-CANCELLABLE, NON-RETURNABLE