

# **MMI** RF COAXIAL CONNECTOR

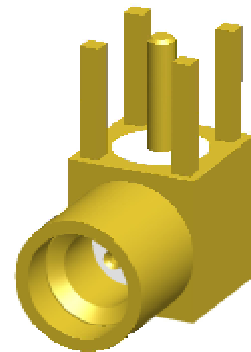
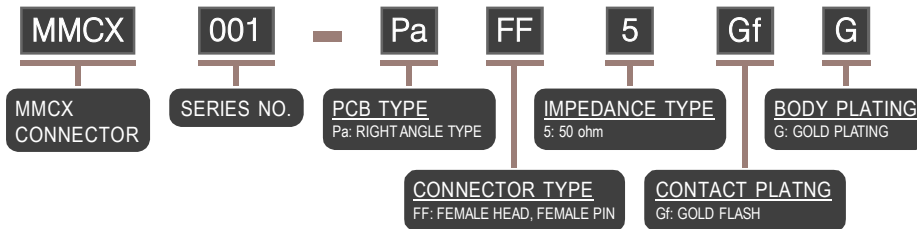
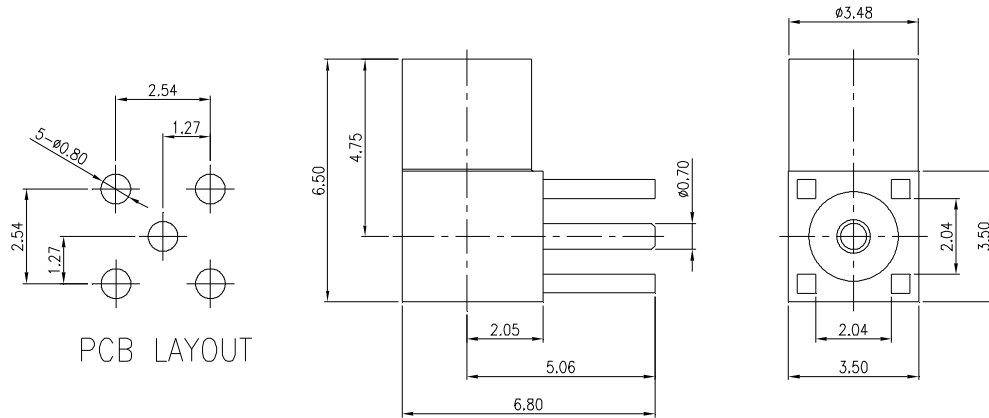
---

## **- MMCX -** **MINIATURE MICRO COAXIAL CONNECTOR**

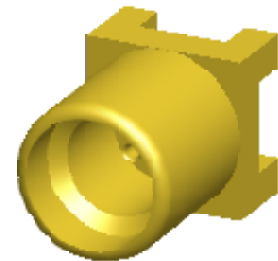
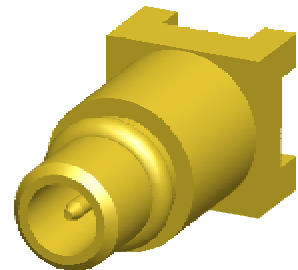
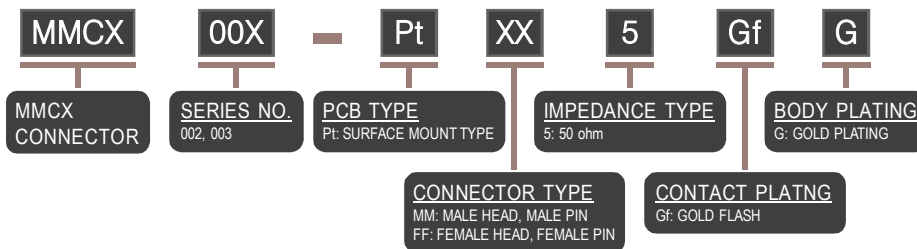
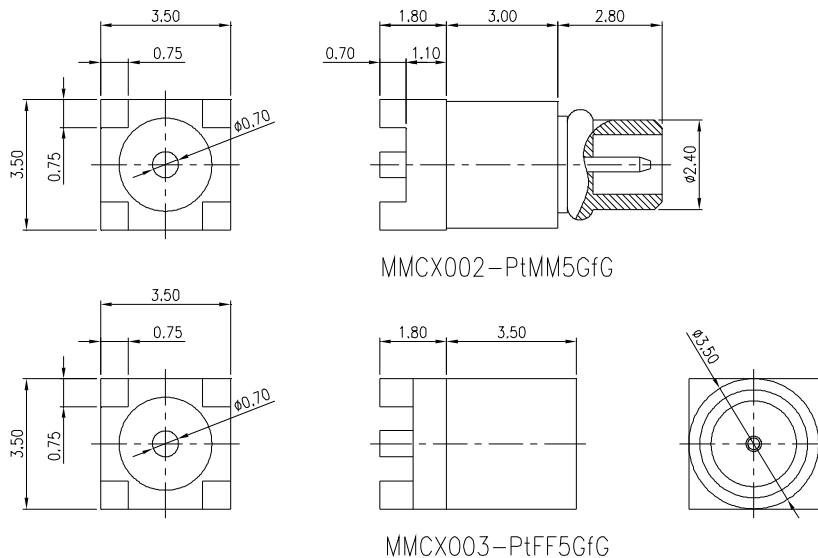
### **TERMINAL TYPE**

- Pa : PCB TYPE, RIGHT ANGLE TYPE
  - Pt : PCB TYPE, SURFACE MOUNT TYPE
-

## MMCX CONNECTOR - RIGHT ANGLE TYPE - Pa



## MMCX CONNECTOR - SURFACE MOUNT TYPE - Pt



NOTE : SOME SIZES, STYLES AND OPTION ARE NON-STANDARD, NON-CANCELLABLE, NON-RETURNABLE