

# **MMI** RF COAXIAL CONNECTOR

---

**- IRC -**

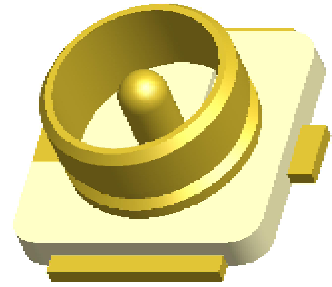
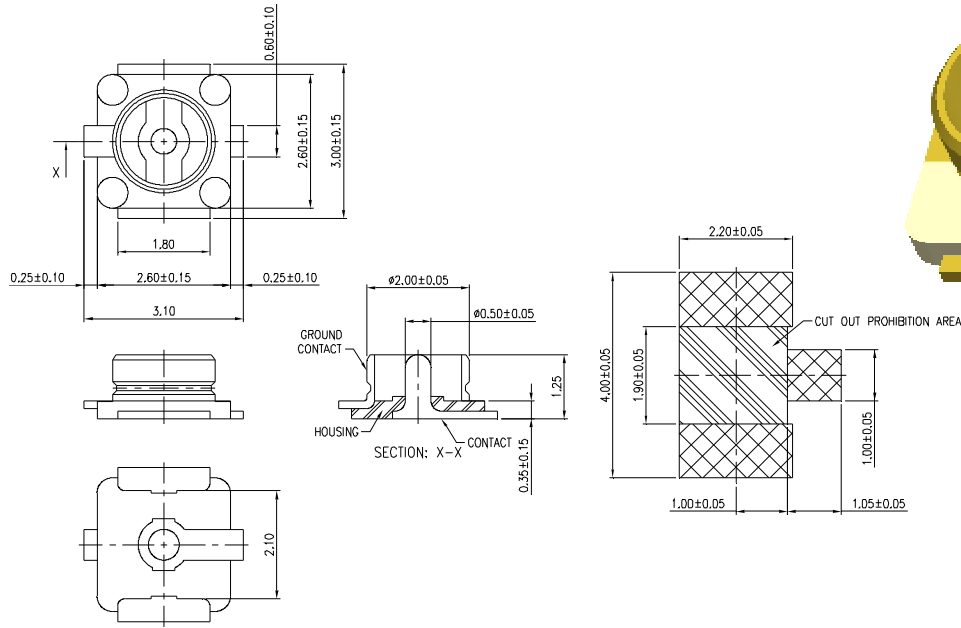
**I-PEX RECEPTACLE CONNECTOR**

## **TERMINAL TYPE**

Pt : PCB TYPE, SURFACE MOUNT TYPE

---

# I-PEX RECEPTACLE CONNECTOR - SURFACE MOUNT TYPE - Pt



<b>IRC</b>	<b>001</b>	-	<b>Pt</b>	<b>Gf</b>	<b>G</b>
I-PEX RECEPTACLE	SERIES NO.		PCB TYPE Pt: SURFACE MOUNT TYPE	CONTACT PLATING Gf: GOLD FLASH	BODY PLATING G: GOLD PLATING

*NOTE : SOME SIZES, STYLES AND OPTION ARE NON-STANDARD, NON-CANCELLABLE, NON-RETURNABLE*