

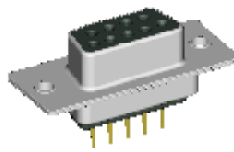
**D-SUB CONNECTOR  
(SOLDER CUP TYPE)**

---

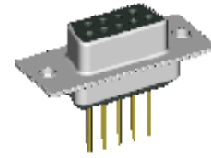
# D-SUBMINIATURE CLASSIFICATION



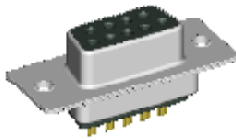
\* RIGHT ANGLE D-SUB( Pa )  
DB 1XX SERIES



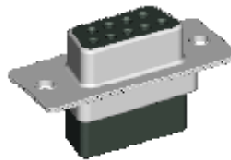
\* STRAIGHT D-SUB( P )  
DB 2XX SERIES



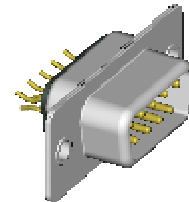
\* WIRING D-SUB( W )  
DB 3XX SERIES



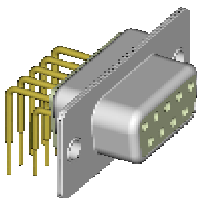
\* SOLDER CUP D-SUB( Sc )  
DB 4XX SERIES



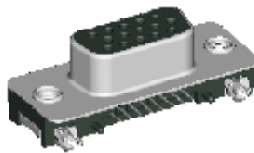
\* CRIMP D-SUB( Cr )  
DB 5XX SERIES



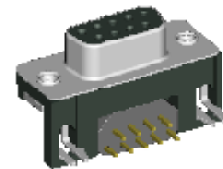
\* STRADDLE D-SUB( Ste )  
DB 6XX SERIES



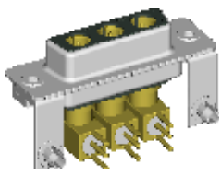
\* MACHINE PIN D-SUB  
DB 9XX SERIES



\* HIGH DENSITY D-SUB  
HDB SERIES



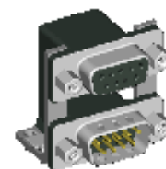
\* EMI D- SUB  
EDB & EHDB SERIES



\* COMBO D-SUB  
CDB SERIES



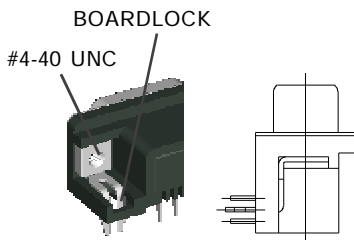
\* IDC D-SUB  
IDB SERIES



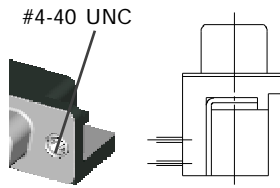
\* STACK D-SUB  
SDB SERIES

NOTE : SOME SIZES, STYLES AND OPTION ARE NON-STANDARD, NON-CANCELLABLE, NON-RETURNABLE

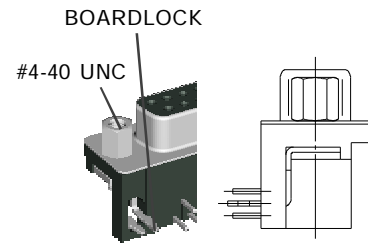
# DB1XX SERIES MOUNTING OPTIONS



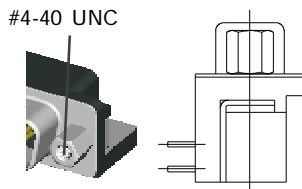
**a TYPE**  
WITH #4-40UNC THREAD INSERT  
GROUNDING BRACKET &  
BOARDLOCK



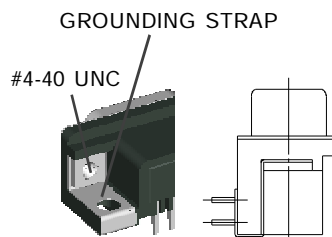
**b TYPE**  
WITH #4-40UNC THREAD INSERT  
GROUNDING BRACKET



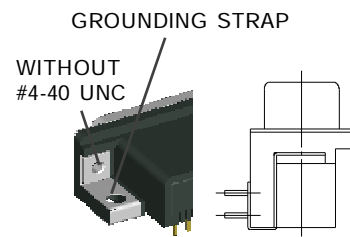
**c TYPE**  
WITH FIXED #4-40UNC HEX NUT  
GROUNDING BRACKET &  
BOARDLOCK



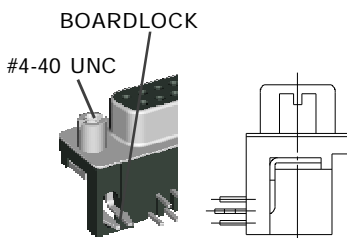
**d TYPE**  
WITH FIXED #4-40UNC HEX NUT  
GROUNDING BRACKET



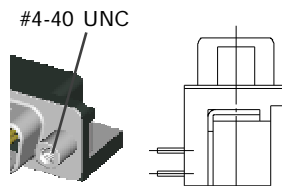
**e TYPE**  
WITH #4-40UNC THREAD INSERT  
GROUNDING STRAP



**en TYPE**  
WITHOUT #4-40UNC THREAD INSERT  
WITH GROUNDING STRAP



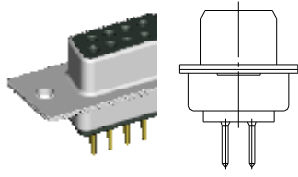
**rc TYPE**  
WITH FIXED #4-40UNC ROUND NUT  
GROUNDING BRACKET &  
BOARDLOCK



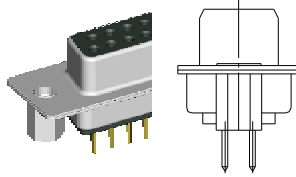
**rd TYPE**  
WITH FIXED #4-40UNC ROUND NUT  
GROUNDING BRACKET

NOTE : SOME SIZES, STYLES AND OPTION ARE NON-STANDARD, NON-CANCELLABLE, NON-RETURNABLE

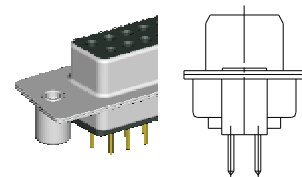
## DB 2XX SERIES MOUNTING OPTIONS



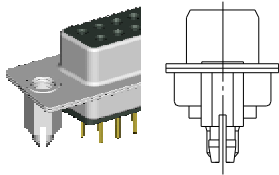
H TYPE  
WITH MOUNTING HOLE ONLY



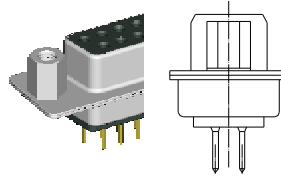
I TYPE  
WITH #4-40UNC HEX NUT  
IN THE REAR OF THE SHELL



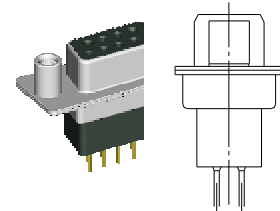
J TYPE  
WITH #4-40UNC ROUND NUT  
IN THE REAR OF THE SHELL



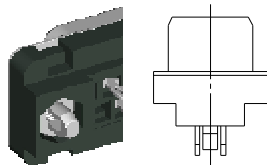
K TYPE  
WITH #4-40UNC IN THE REAR SHELL  
USE RIVET AS BOARDLOCK



L TYPE  
WITH #4-40UNC HEX NUT  
IN THE FRONT OF THE SHELL



M TYPE  
WITH #4-40UNC ROUND NUT  
IN THE FRONT OF THE SHELL



P TYPE  
WITH #4-40UNC IN THE REAR SHELL  
USE PRESS FIT BOARDLOCK

NOTE : SOME SIZES, STYLES AND OPTION ARE NON-STANDARD, NON-CANCELLABLE, NON-RETURNABLE

# D-SUB CONNECTOR PART NO. INFORMATION

**DB**    **XXX** - **X**    **X**    **XX**    **GX**    -    **X**    **X**

D-SUB CONNECTOR

**GENDER**

M: MALE  
F: FEMALE

**NO. OF CONTACT**

09,15,25,37,50

**PCB or TERMINAL TYPE**

Pa: RIGHT ANGLE TYPE  
P: STRAIGHT TYPE  
W: WIRE TYPE  
Sc: SOLDER CUP TYPE  
Cr: CRIMP TYPE  
Ste: STRADDLE MOUNT TYPE

**BOARDLOCK OPTION**

X: WITHOUT PRONG BOARD  
2: 2 PRONG BOARD LOCK  
4: 4 PRONG BOARD LOCK

**CONTACT PLATING OPTION**

Gf: GOLD FLASH  
G30: 30u" GOLD PLATING  
Gft: GOLD FLASH ON CONTACT, TIN PLATED ON SOLDER TAIL  
G15t: 15u" GOLD ON CONTACT, TIN PLATED ON SOLDER TAIL  
G30t: 30u" GOLD ON CONTACT, TIN PLATED ON SOLDER TAIL

**SERIES NO.**

1XX: RIGHT ANGLE TYPE  
-100: FOOTPRINT= 8.08 mm  
-120: FOOTPRINT= 14.84 mm  
-121: FOOTPRINT= 8.00 mm  
-131: FOOTPRINT= 1.60 mm  
-132: FOOTPRINT= 1.20 mm  
-160: FOOTPRINT= 5.08 mm

2XX: STRAIGHT TYPE  
-200: LENTH= 4.85 mm  
-210: LENTH= 5.00 mm  
-250: PRESS FIT PCB TYPE

3XX: WIRE TYPE  
-300: LENTH= 10.50 mm  
-310: LENTH= 13.50 mm  
-320: LENTH= 17.50 mm

4XX: SOLDER CUP TYPE  
- 400

5XX: CRIMP TYPE  
- 500

6XX: STRADDLE MOUNT TYPE  
-600

9XX: MACHINE PIN TYPE  
-900: FOOTPRINT= 8.00 mm  
-910: FOOTPRINT= 10.20 mm  
-930: FOOTPRINT= 8.19 mm  
-931: FOOTPRINT= 10.39 mm

**MOUNTING TYPE**

FOR RIGHT ANGLE TYPE

a :WITH #4-40UNC THREAD INSERT GROUNDING BRACKET & BOARDLOCK  
an: WITHOUT #4-40UNC THREAD INSERT

GROUNDING BRACKET & BOARDLOCK

b: WITH #4-40UNC THREAD INSERT GROUNDING BRACKET & BOARDLOCK  
c: WITH FIXED #4-40UNC HEX NUT GROUNDING BRACKET & BOARDLOCK

d: WITH FIXED #4-40UNC HEX NUT GROUNDING BRACKET

e : WITH #4-40UNC THREAD INSERT GROUNDING STRAP

en: WITHOUT #4-40UNC THREAD INSERT WITH GROUNDING STRAP

rc: WITH FIXED #4-40UNC ROUND NUT GROUNDING BRACKET & BOARDLOCK

rd: WITH FIXED #4-40UNC ROUND NUT GROUNDING BRACKET

FOR STRAIGHT TYPE

H: WITH MOUNTING HOLE ONLY

I: WITH #4-40UNC HEX NUT IN THE REAR OF THE SHELL

J: WITH #4-40UNC ROUND NUT IN THE REAR OF THE SHELL

K: WITH #4-40UNC IN THE REAR SHELL USE RIVET AS BOARDLOCK

L: WITH #4-40UNC HEX NUT IN THE FRONT OF THE SHELL

M: WITH #4-40UNC ROUND NUT IN THE FRONT OF THE SHELL

JP: WITH #4-40UNC ROUND NUT WITH PLASTIC INSERT

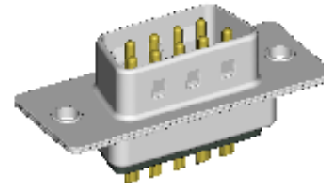
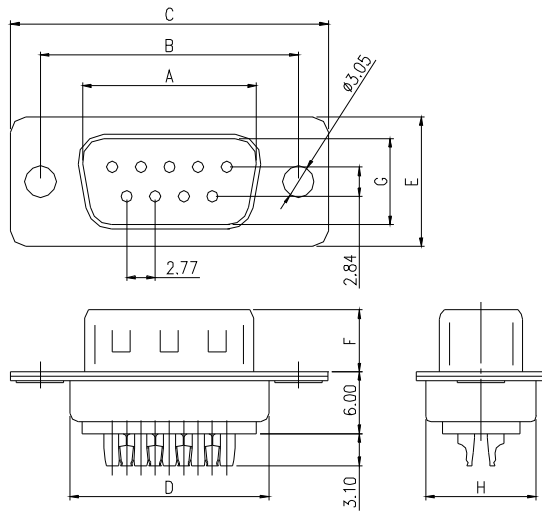
IN THE REAR OF THE SHELL

P: WITH #4-40UNC IN THE REAR SHELL USE PRESS FIT BOARDLOCK

NOTE : SOME SIZES, STYLES AND OPTION ARE NON-STANDARD, NON-CANCELLABLE, NON-RETURNABLE

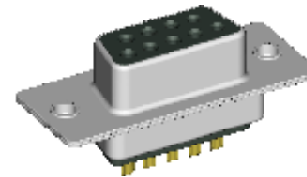
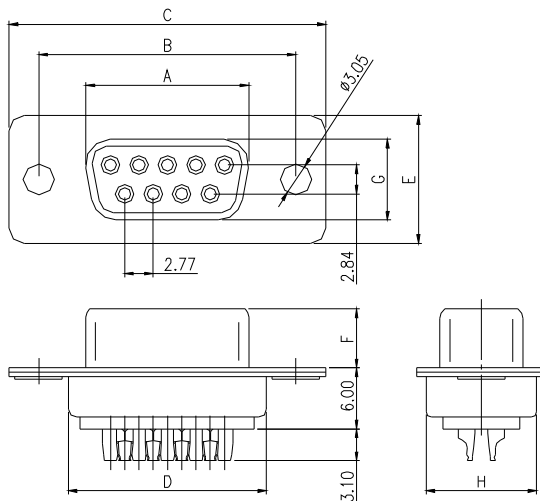
# D-SUB 400 SERIES *MOUNTING TYPE H* SOLDER TYPE - Sc

## MALE

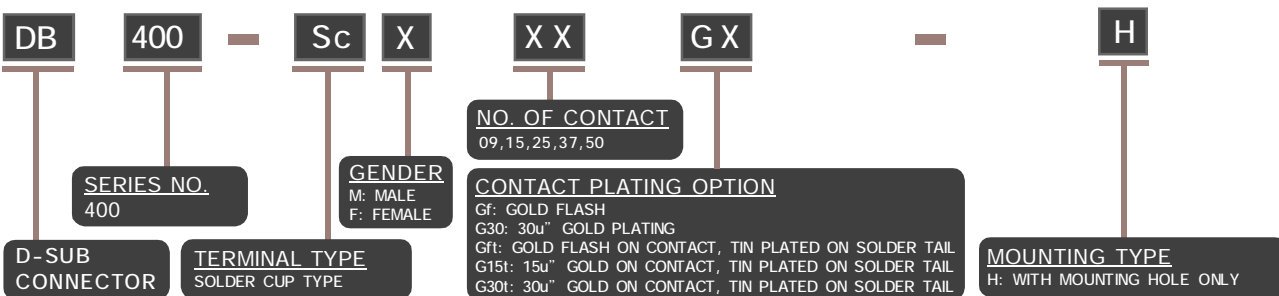


PART NO.	NO.OF CONTACTS (SHELL SIZE)	DIMENSION							
		A	B	C	D	E	F	G	H
DB400-ScM09GX-H	9P	16.92	24.99	30.81	19.30	12.50	6.00	8.30	10.75
DB400-ScM15GX-H	15P	25.25	33.32	39.14	27.60	12.50	6.00	8.30	10.75
DB400-ScM25GX-H	25P	38.96	47.04	53.04	41.10	12.50	6.00	8.30	10.75
DB400-ScM37GX-H	37P	55.42	63.50	69.32	57.30	12.50	6.00	8.30	10.75
DB400-ScM50GX-H	50P	52.81	61.00	67.00	55.10	15.30	6.00	11.10	13.35

## FEMALE



PART NO.	NO.OF CONTACTS (SHELL SIZE)	DIMENSION							
		A	B	C	D	E	F	G	H
DB400-ScF09GX-H	9P	16.30	24.99	30.81	19.30	12.50	5.80	7.90	10.75
DB400-ScF15GX-H	15P	24.60	33.32	39.14	27.60	12.50	5.80	7.90	10.75
DB400-ScF25GX-H	25P	38.30	47.04	53.04	41.10	12.50	5.80	7.90	10.75
DB400-ScF37GX-H	37P	54.80	63.50	69.32	57.30	12.50	5.80	7.90	10.75
DB400-ScF50GX-H	50P	52.20	61.00	67.00	55.10	15.30	6.00	10.90	13.35



**ELECTRICAL CHARACTERISTIC**  
 CONTACT CURRENT RATING: 1A  
 CONTACT RESISTANCE: 25 mOHM MAX  
 INSULATION RESISTANCE: 5000 MOHM MIN. AT DC 500V  
 DIELECTRIC WITHSTANDING VOLTAGE: AC 1000V 1 MINUTE  
 OPERATING TEMPERATURE: -55°C - +105°C

**MECHANICAL CHARACTERISTICS**  
 CONTACT INSERTION FORCE: 341 g MAX.  
 CONTACT SEPARATION FORCE: 21 g MIN.  
**MATERIALS**  
 INSULATOR: P.B.T UL 94V-0 RATED  
 SHELL: COLD ROLLER STEEL  
 CONTACTS: BRASS

NOTE : SOME SIZES, STYLES AND OPTION ARE NON-STANDARD, NON-CANCELLABLE, NON-RETURNABLE