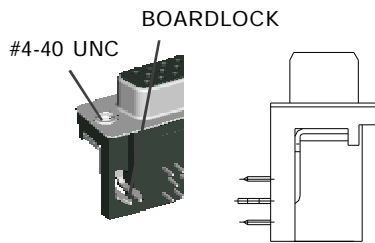


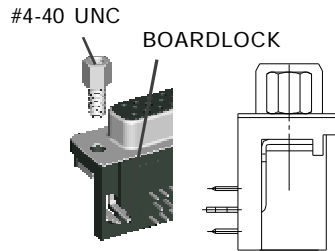
MMI

**HIGH DENSITY D-SUB
(MACHINE PIN TYPE)**

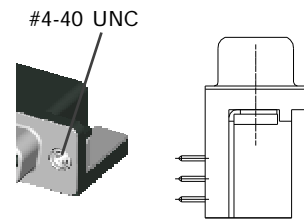
HIGH DENSITY D- SUB 1XX SERIES MOUNTING OPTIONS



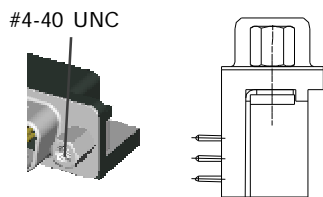
a TYPE
WITH #4-40UNC THREAD INSERT
GROUNDING BRACKET &
BOARDLOCK



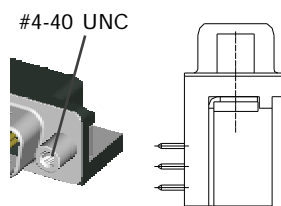
as TYPE
WITH #4-40UNC HEX NUT
GROUNDING BRACKET &
BOARDLOCK



b TYPE
WITH #4-40UNC THREAD INSERT
GROUNDING BRACKET

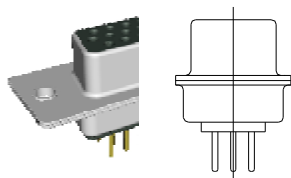


d TYPE
WITH FIXED #4-40UNC HEX NUT
GROUNDING BRACKET

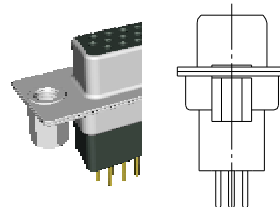


rd TYPE
WITH FIXED #4-40UNC ROUND NUT
GROUNDING BRACKET

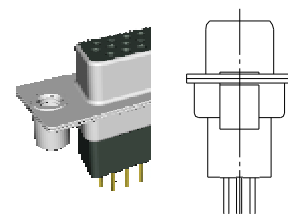
HIGH DENSITY D- SUB 2XX SERIES MOUNTING OPTIONS



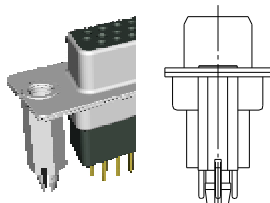
H TYPE
WITH MOUNTING HOLE ONLY



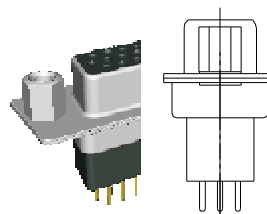
I TYPE
WITH #4-40UNC HEX NUT
IN THE REAR OF THE SHELL



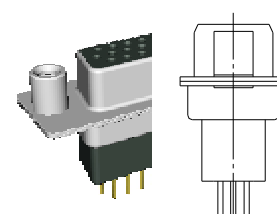
J TYPE
WITH #4-40UNC ROUND NUT
IN THE REAR OF THE SHELL



K TYPE
WITH #4-40UNC IN THE REAR SHELL
USE RIVET AS BOARDLOCK



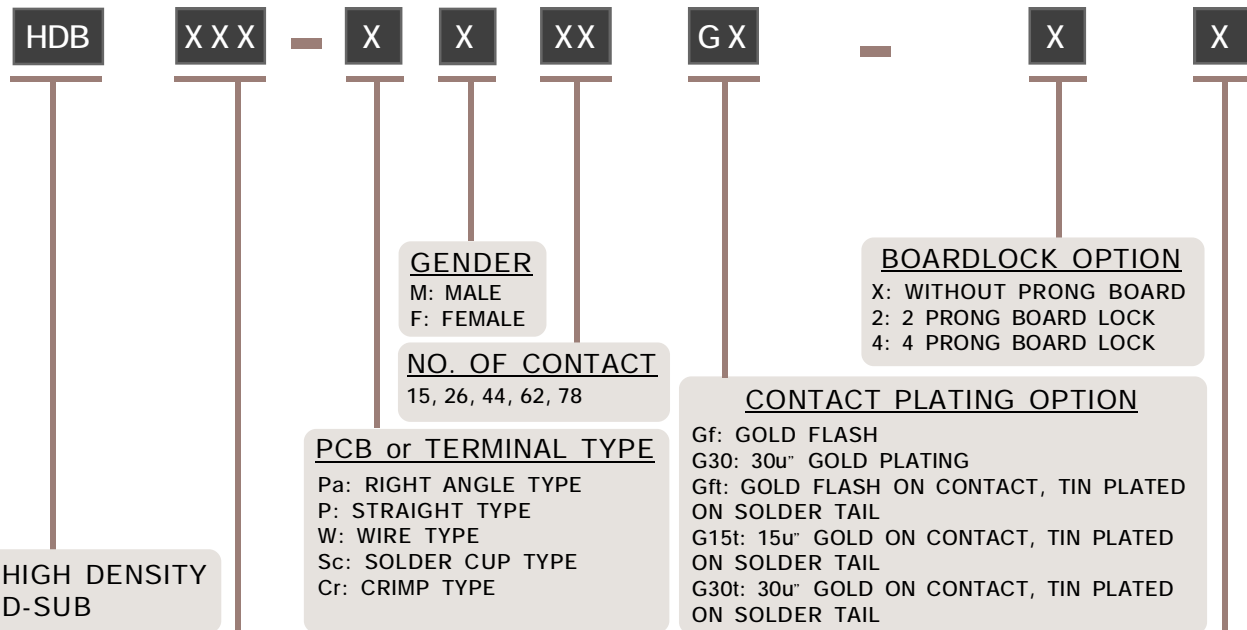
L TYPE
WITH #4-40UNC HEX NUT
IN THE FRONT OF THE SHELL



M TYPE
WITH #4-40UNC ROUND NUT
IN THE FRONT OF THE SHELL

NOTE : SOME SIZES, STYLES AND OPTION ARE NON-STANDARD, NON-CANCELLABLE, NON-RETURNABLE

HIGH DENSITY D-SUB CONNECTOR PART NO. INFORMATION



SERIES NO.

1XX: RIGHT ANGLE TYPE
-130
-132
-14X
-150

2XX: STRAIGHT TYPE
-200
-210
-230
-250

3XX: WIRE TYPE
-300: LENTH= 10.00 mm
-310: LENTH= 13.00 mm
-320: LENTH= 17.50 mm

4XX: SOLDER CUP TYPE
- 400

5XX: CRIMP TYPE
- 500

9XX: MACHINE PIN TYPE
-900: FOOTPRINT= 9.30 mm
-910: FOOTPRINT= 7.19 mm

MOUNTING TYPE

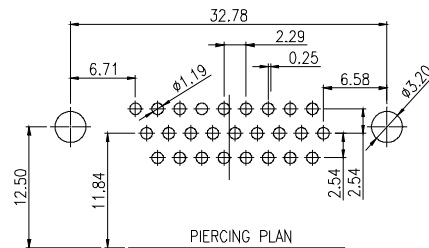
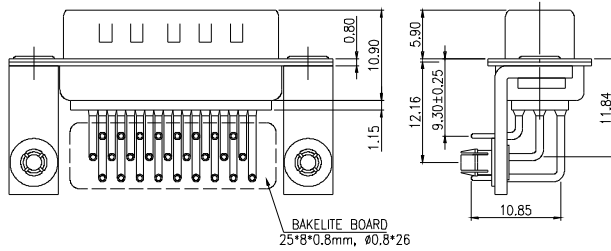
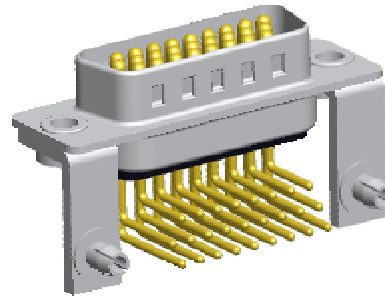
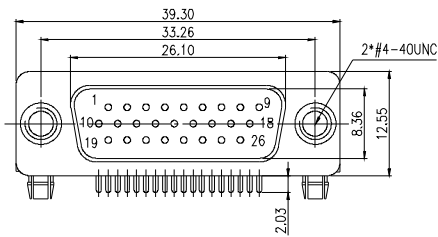
FOR RIGHT ANGLE TYPE
a :WITH #4-40UNC THREAD INSERT GROUNDING BRACKET & BOARDLOCK
b: WITH #4-40UNC THREAD INSERT GROUNDING BRACKET
d: WITH FIXED #4-40UNC HEX NUT GROUNDING BRACKET
rd: WITH FIXED #4-40UNC ROUND NUT GROUNDING BRACKET

FOR STRAIGHT TYPE
H: WITH MOUNTING HOLE ONLY
I: WITH #4-40UNC HEX NUT IN THE REAR OF THE SHELL
J: WITH #4-40UNC ROUND NUT IN THE REAR OF THE SHELL
K: WITH #4-40UNC IN THE REAR SHELL USE RIVET AS BOARDLOCK
L: WITH #4-40UNC HEX NUT IN THE FRONT OF THE SHELL
M: WITH #4-40UNC ROUND NUT IN THE FRONT OF THE SHELL

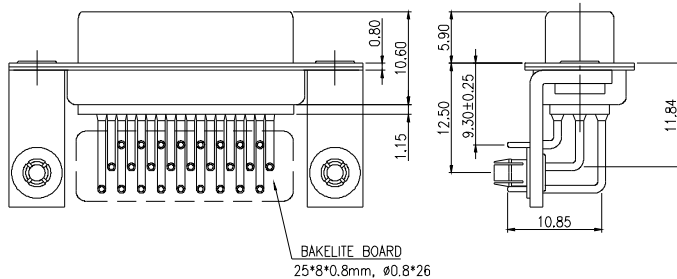
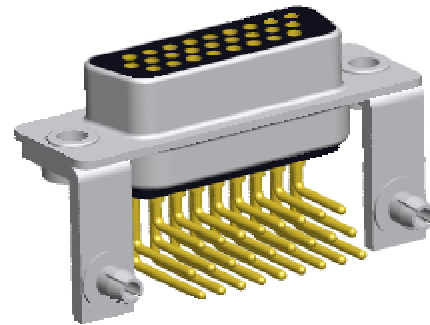
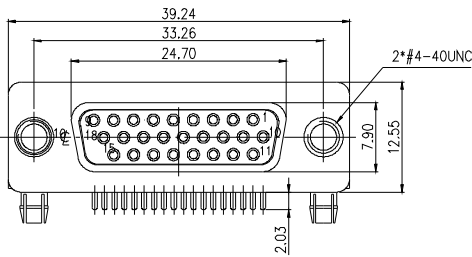
NOTE : SOME SIZES, STYLES AND OPTION ARE NON-STANDARD, NON-CANCELLABLE, NON-RETURNABLE

HDB 900 SERIES - MOUNTING TYPE 2aB RIGHT ANGLE TYPE - Pa

MALE



FEMALE



HDB	900	Pa	X	26	Gf	2	aB
HIGH DENSITY D- SUB	SERIES NO. 900: FOOT PRINT= 9.30mm	PCB TYPE. Pa: RIGHT ANGLE TYPE	GENDER M: MALE F: FEMALE	NO. OF CONTACT 26	CONTACT PLATING OPTION Gf: GOLD FLASH OVER ALL	BOARDLOCK OPTION 2: 2 PRONG BOARD LOCK	a: WITH #4-40UNC THREAD INSERT GROUNDING BRACKET & BOARDLOCK B: BAKELITE BOARD (OPTION)

ELECTRICAL CHARACTERISTIC

INSULATION RESISTANCE: 1000 OHM MIN. AT 500V DC
DIELECTRIC WITHSTANDING VOLTAGE: AC 500V / MIN.
OPERATING TEMPERATURE: -40°C~ +105°C

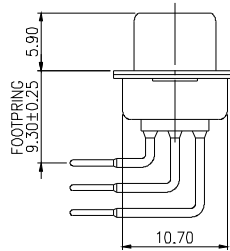
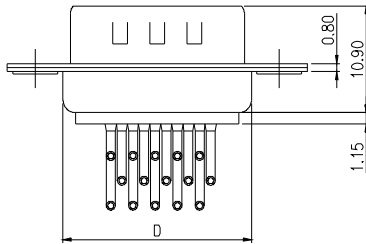
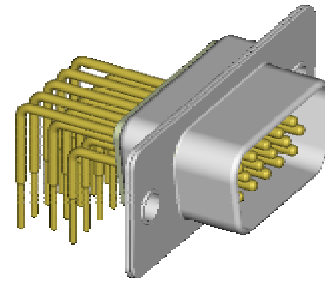
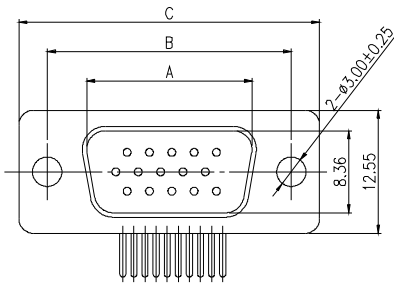
MATERIALS

INSULATOR: P.B.T. UL 94V-0 RATED
SHELL: STEEL ZINC PLATED OR TIN PLATED
CONTACTS: BRASS OR PHOSPHOR

NOTE : SOME SIZES, STYLES AND OPTION ARE NON-STANDARD, NON-CANCELLABLE, NON-RETURNABLE

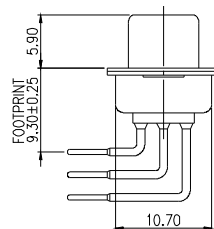
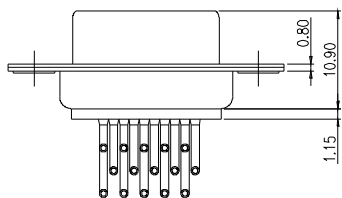
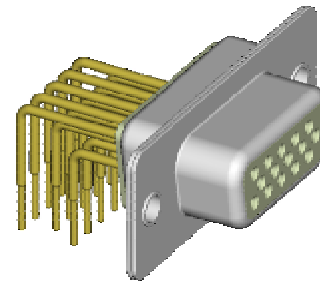
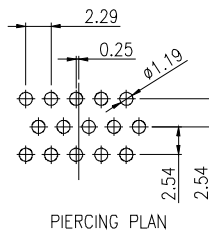
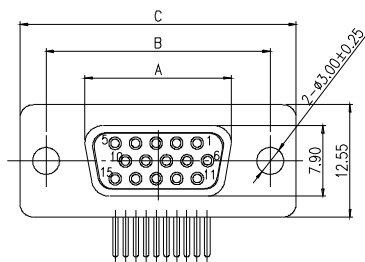
HDB 900 SERIES - MOUNTING TYPE H RIGHT ANGLE TYPE - Pa

MALE

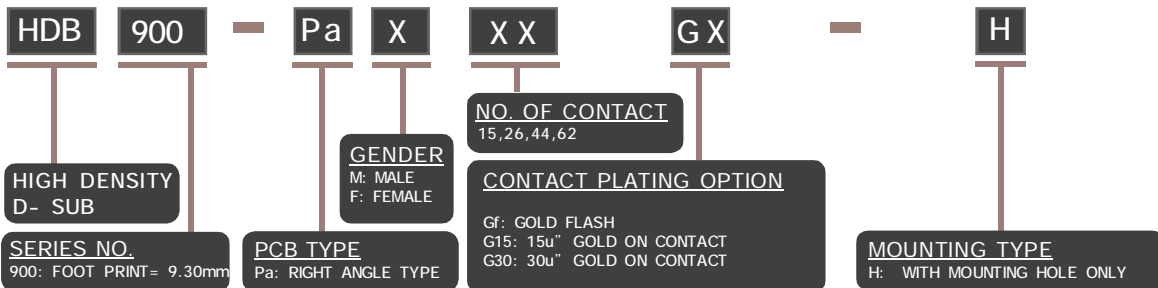


MODEL NO.	NO.OF CONTACTS (SHELL SIZE)	DIMENSION			
		A±0.2	B±0.25	C±0.38	D±0.2
HDB900-PaM09GX-H	15P	16.92	24.99	30.81	19.28
HDB900-PaM15GX-H	26P	25.25	33.32	39.14	27.51
HDB900-PaM25GX-H	44P	38.96	47.04	53.04	41.26
HDB900-PaM37GX-H	62P	55.42	63.50	69.32	57.71

FEMALE



MODEL NO.	NO.OF CONTACTS (SHELL SIZE)	DIMENSION		
		A±0.2	B±0.25	C±0.38
HDB900-PaF15GX-H	15P	16.33	24.99	30.81
HDB900-PaF26GX-H	26P	24.67	32.96	39.23
HDB900-PaF44GX-H	44P	38.38	47.04	53.14
HDB900-PaF62GX-H	62P	54.84	63.50	69.44



ELECTRICAL CHARACTERISTIC

INSULATION RESISTANCE: 1000 OHM MIN. AT 500V DC
 DIELECTRIC WITHSTANDING VOLTAGE: AC 500V / MIN.
 OPERATING TEMPERATURE: -40°C - +105°C

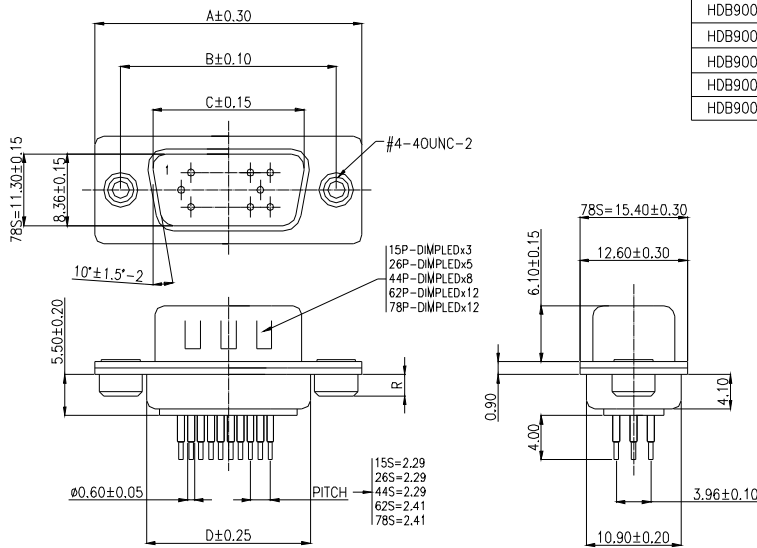
MATERIALS

INSULATOR: P.B.T. UL 94V-0 RATED
 SHELL: STEEL ZINC PLATED OR TIN PLATED
 CONTACTS: BRASS OR PHOSPHOR

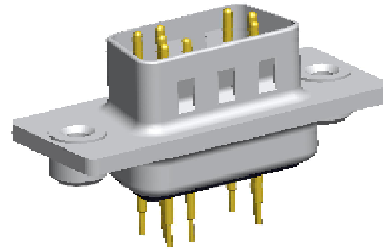
NOTE : SOME SIZES, STYLES AND OPTION ARE NON-STANDARD, NON-CANCELLABLE, NON-RETURNABLE

HDB 900 SERIES - MOUNTING TYPE J STRAIGHT TYPE - P

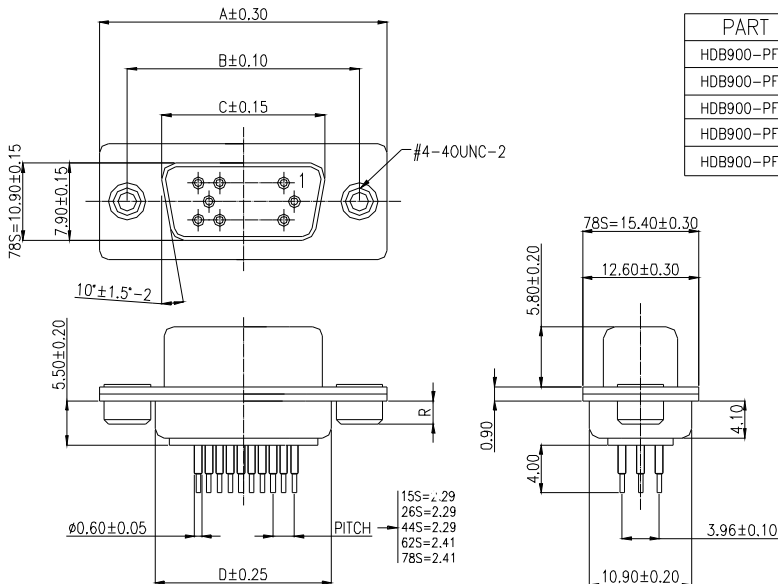
MALE



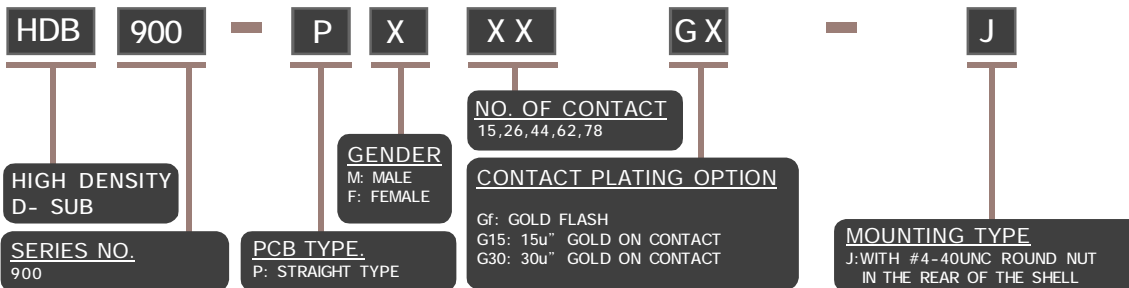
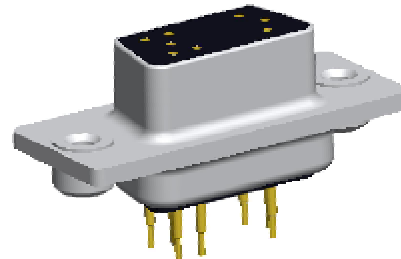
PART NO	A	B	C	D	R
HDB900-PM15GX-J	30.80	24.99	16.92	19.20	2.5 6.0
HDB900-PM26GX-J	39.20	33.32	25.25	27.70	
HDB900-PM44GX-J	53.00	47.04	38.95	41.10	
HDB900-PM62GX-J	69.40	63.50	55.40	57.30	
HDB900-PM78GX-J	67.00	61.10	52.80	55.10	



FEMALE



PART NO	A	B	C	D	R
HDB900-PF15GX-J	30.80	24.99	16.34	19.20	2.5 6.0
HDB900-PF26GX-J	39.20	33.32	24.70	27.70	
HDB900-PF44GX-J	53.00	47.04	38.40	41.10	
HDB900-PF62GX-J	69.40	63.50	54.80	57.30	
HDB900-PF78GX-J	67.00	61.10	52.20	55.10	



ELECTRICAL CHARACTERISTIC

CONTACT CURRENT RATING: 5 AMP
 CONTACT RESISTANCE: 15 M OHM MAX.
 INSULATION RESISTANCE: 1000 OHM MIN.
 DIELECTRIC WITHSTANDING VOLTAGE: AC 500V / MIN. RMS
 OPERATING TEMPERATURE: -55°C ~ +105°C

MATERIALS

INSULATOR: NYLON- 6T, BLACK UL94V- 0
 SHELL: STEEL, TIN PLATED
 CONTACTS: BRASS, STAMPED- PIN
 GOLD PLATED OVER NICKEL

NOTE : SOME SIZES, STYLES AND OPTION ARE NON-STANDARD, NON-CANCELLABLE, NON-RETURNABLE