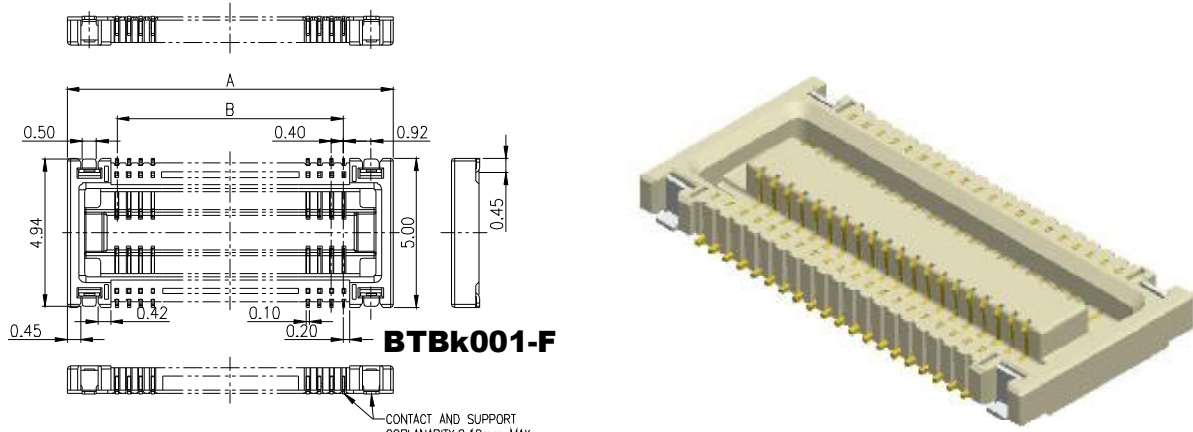


MMI

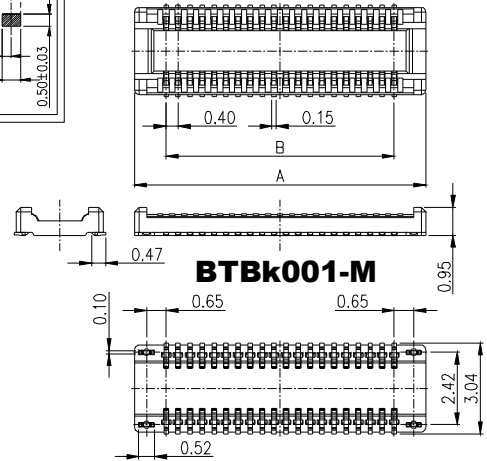
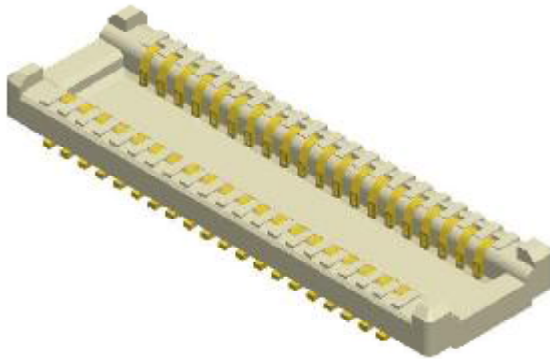
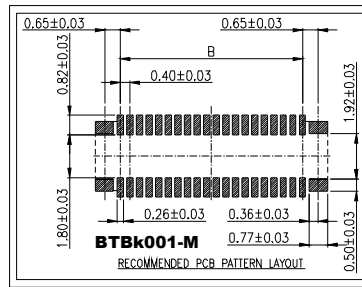
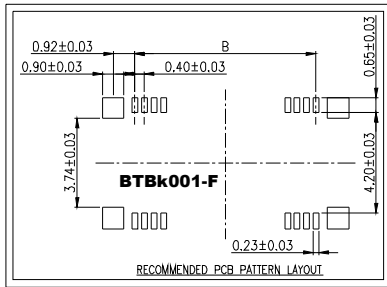
**BOARD TO BOARD
PITCH: 4.00mm**

0.40mm BOARD TO BOARD - SURFACE MOUNT TYPE - Pt



BTBk001-F

CONTACT AND SUPPORT
COPLANARITY: 0.10mm MAX



BTB	k	001	-	Pt	X	##	Gft
BOARD TO BOARD	PITCH k: 0.40 mm	SERIES NO.		PCB TYPE Pt: SURFACE MOUNT TYPE	GENDER M: MALE F: FEMALE	NO. OF PINS	CONTACT PLATING Gft: GOLD FLASH ON CONTACT, TIN PLATED ON SOLDER TAIL

PART NUMBER	A	B
BTBk001-PtF20Gft	6.94	3.60
BTBk001-PtF24Gft	7.74	4.40
BTBk001-PtF30Gft	8.94	5.60
BTBk001-PtF40Gft	10.94	7.60

PART NUMBER	A	B
BTBk001-PtM20Gft	5.70	3.60
BTBk001-PtM24Gft	6.50	4.40
BTBk001-PtM30Gft	7.70	5.60
BTBk001-PtM40Gft	9.70	7.60

SPECIFICATIONS

CONTACT RATING: 0.1 AMPS
INSULATOR RESISTANCE: 100Ω MIN.
DIELECTRIC WITHSTANDING: AC 125V
OPERATING TEMPERATURE: -40°C~+105°C

MATERIALS

CONTACT MATERIAL: COPPER ALLOY
INSULATOR MATERIAL: LCP, UL 94V-0
FINISH: GOLD FLASH ON CONTACT, TIN PLATED ON SOLDER TAIL

NOTE : SOME SIZES, STYLES AND OPTION ARE NON-STANDARD, NON-CANCELLABLE, NON-RETURNABLE