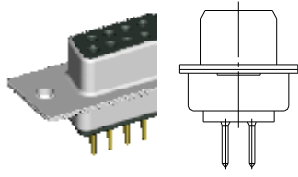


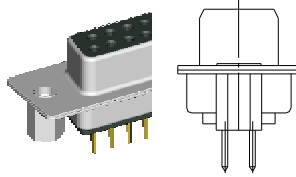
**D-SUB CONNECTOR  
(STRAIGHT TYPE)**

---

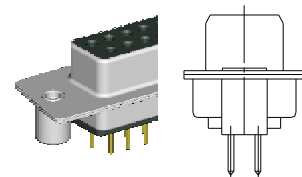
## DB 2XX SERIES MOUNTING OPTIONS



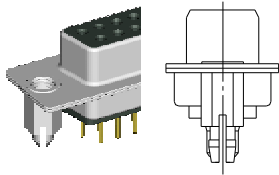
H TYPE  
WITH MOUNTING HOLE ONLY



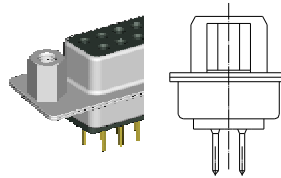
I TYPE  
WITH #4-40UNC HEX NUT  
IN THE REAR OF THE SHELL



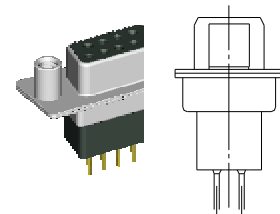
J TYPE  
WITH #4-40UNC ROUND NUT  
IN THE REAR OF THE SHELL



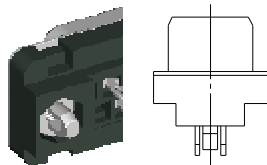
K TYPE  
WITH #4-40UNC IN THE REAR SHELL  
USE RIVET AS BOARDLOCK



L TYPE  
WITH #4-40UNC HEX NUT  
IN THE FRONT OF THE SHELL



M TYPE  
WITH #4-40UNC ROUND NUT  
IN THE FRONT OF THE SHELL



P TYPE  
WITH #4-40UNC IN THE REAR SHELL  
USE PRESS FIT BOARDLOCK

NOTE : SOME SIZES, STYLES AND OPTION ARE NON-STANDARD, NON-CANCELLABLE, NON-RETURNABLE

## D-SUB CONNECTOR PART NO. INFORMATION

**DB**    **XXX** - **X**    **X**    **XX**    **GX**    -    **X**    **X**

D-SUB  
CONNECTOR

GENDER

M: MALE  
F: FEMALE

NO. OF CONTACT

09,15,25,37,50

PCB or TERMINAL TYPE

Pa: RIGHT ANGLE TYPE  
P: STRAIGHT TYPE  
W: WIRE TYPE  
Sc: SOLDER CUP TYPE  
Cr: CRIMP TYPE  
Ste: STRADDLE MOUNT TYPE

BOARDLOCK OPTION

X: WITHOUT PRONG BOARD  
2: 2 PRONG BOARD LOCK  
4: 4 PRONG BOARD LOCK

CONTACT PLATING OPTION

Gf: GOLD FLASH  
G30: 30u" GOLD PLATING  
Gft: GOLD FLASH ON CONTACT, TIN PLATED ON SOLDER TAIL  
G15t: 15u" GOLD ON CONTACT, TIN PLATED ON SOLDER TAIL  
G30t: 30u" GOLD ON CONTACT, TIN PLATED ON SOLDER TAIL

SERIES NO.

1XX: RIGHT ANGLE TYPE  
-100: FOOTPRINT= 8.08 mm  
-120: FOOTPRINT= 14.84 mm  
-121: FOOTPRINT= 8.00 mm  
-131: FOOTPRINT= 1.60 mm  
-132: FOOTPRINT= 1.20 mm  
-160: FOOTPRINT= 5.08 mm

2XX: STRAIGHT TYPE  
-200: LENTH= 4.85 mm  
-210: LENTH= 5.00 mm  
-250: PRESS FIT PCB TYPE

3XX: WIRE TYPE  
-300: LENTH= 10.50 mm  
-310: LENTH= 13.50 mm  
-320: LENTH= 17.50 mm

4XX: SOLDER CUP TYPE  
- 400

5XX: CRIMP TYPE  
- 500

6XX: STRADDLE MOUNT TYPE  
-600

9XX: MACHINE PIN TYPE  
-900: FOOTPRINT= 8.00 mm  
-910: FOOTPRINT= 10.20 mm  
-930: FOOTPRINT= 8.19 mm  
-931: FOOTPRINT= 10.39 mm

MOUNTING TYPE

FOR RIGHT ANGLE TYPE

a :WITH #4-40UNC THREAD INSERT GROUNDING BRACKET & BOARDLOCK  
an: WITHOUT #4-40UNC THREAD INSERT

GROUNDING BRACKET & BOARDLOCK

b: WITH #4-40UNC THREAD INSERT GROUNDING BRACKET  
c: WITH FIXED #4-40UNC HEX NUT GROUNDING BRACKET & BOARDLOCK  
d: WITH FIXED #4-40UNC HEX NUT GROUNDING BRACKET  
e : WITH #4-40UNC THREAD INSERT GROUNDING STRAP  
en: WITHOUT #4-40UNC THREAD INSERT WITH GROUNDING STRAP  
rc: WITH FIXED #4-40UNC ROUND NUT GROUNDING BRACKET & BOARDLOCK  
rd: WITH FIXED #4-40UNC ROUND NUT GROUNDING BRACKET

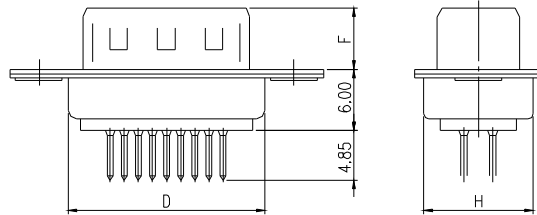
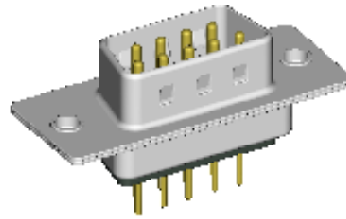
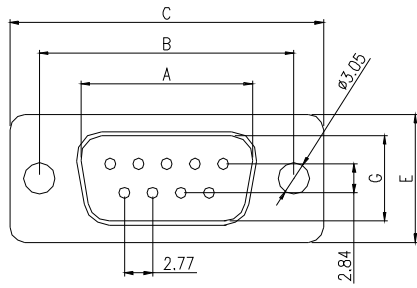
FOR STRAIGHT TYPE

H: WITH MOUNTING HOLE ONLY  
I: WITH #4-40UNC HEX NUT IN THE REAR OF THE SHELL  
J: WITH #4-40UNC ROUND NUT IN THE REAR OF THE SHELL  
K: WITH #4-40UNC IN THE REAR SHELL USE RIVET AS BOARDLOCK  
L: WITH #4-40UNC HEX NUT IN THE FRONT OF THE SHELL  
M: WITH #4-40UNC ROUND NUT IN THE FRONT OF THE SHELL  
JP: WITH #4-40UNC ROUND NUT WITH PLASTIC INSERT  
IN THE REAR OF THE SHELL  
P: WITH #4-40UNC IN THE REAR SHELL USE PRESS FIT BOARDLOCK

NOTE : SOME SIZES, STYLES AND OPTION ARE NON-STANDARD, NON-CANCELLABLE, NON-RETURNABLE

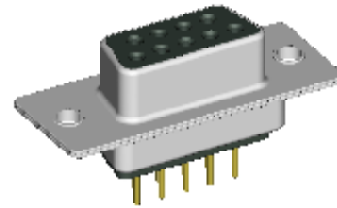
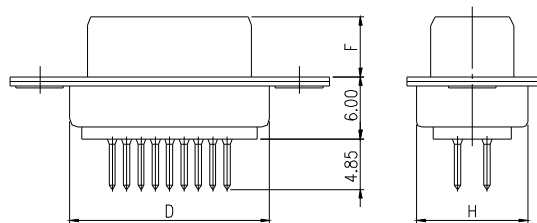
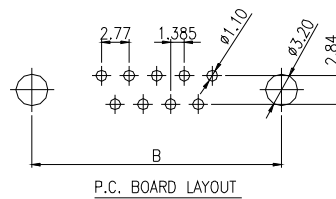
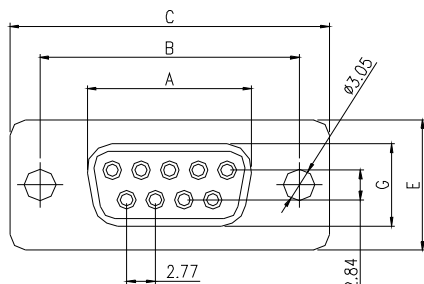
# D-SUB 200 SERIES *MOUNTING TYPE H* STRAIGHT TYPE - P

## MALE



PART NO.	NO.OF CONTACTS (SHELL SIZE)	DIMENSION							
		A	B	C	D	E	F	G	H
DB200-PM09GX-H	9P	16.92	24.99	30.81	19.30	12.50	6.00	8.30	10.75
DB200-PM15GX-H	15P	25.25	33.32	39.14	27.60	12.50	6.00	8.30	10.75
DB200-PM25GX-H	25P	38.96	47.04	53.04	41.10	12.50	6.00	8.30	10.75
DB200-PM37GX-H	37P	55.42	63.50	69.32	57.30	12.50	6.00	8.30	10.75
DB200-PM50GX-H	50P	52.81	61.00	67.00	55.10	15.30	6.00	11.10	13.35

## FEMALE



PART NO.	NO.OF CONTACTS (SHELL SIZE)	DIMENSION							
		A	B	C	D	E	F	G	H
DB200-PF09GX-H	9P	16.30	24.99	30.81	19.30	12.50	5.80	7.90	10.75
DB200-PF15GX-H	15P	24.60	33.32	39.14	27.60	12.50	5.80	7.90	10.75
DB200-PF25GX-H	25P	38.30	47.04	53.04	41.10	12.50	5.80	7.90	10.75
DB200-PF37GX-H	37P	54.80	63.50	69.32	57.30	12.50	5.80	7.90	10.75
DB200-PF50GX-H	50P	52.20	61.00	67.00	55.10	15.30	6.00	10.90	13.35

<b>DB</b>	<b>200</b>	<b>P</b>	<b>X</b>	<b>XX</b>	<b>GX</b>	<b>H</b>
<b>D-SUB CONNECTOR</b>	<b>SERIES NO.</b> 200	<b>GENDER</b> M: MALE F: FEMALE	<b>NO. OF CONTACT</b> 09, 15, 25, 37, 50	<b>CONTACT PLATING OPTION</b> Gf: GOLD FLASH G30: 30u" GOLD PLATING Gf: GOLD FLASH ON CONTACT, TIN PLATED ON SOLDER TAIL G15t: 15u" GOLD ON CONTACT, TIN PLATED ON SOLDER TAIL G30t: 30u" GOLD ON CONTACT, TIN PLATED ON SOLDER TAIL		<b>MOUNTING TYPE</b> H: WITH MOUNTING HOLE ONLY
	<b>PCB TYPE</b> P: STRAIGHT TPYE					

### ELECTRICAL CHARACTERISTIC

CONTACT CURRENT RATING: 5 AMP  
 CONTACT RESISTANCE: 25 M OHM MAX.  
 INSULATION RESISTANCE: 5000 OHM MIN. AT 500V DC  
 DIELECTRIC WITHSTANDING VOLTAGE: AC 1000V / MIN. R.M.S  
 OPERATING TEMPERATURE:-55°C~ +105°C

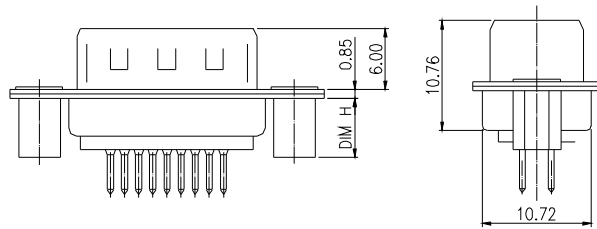
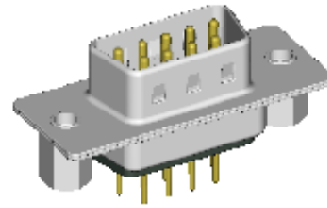
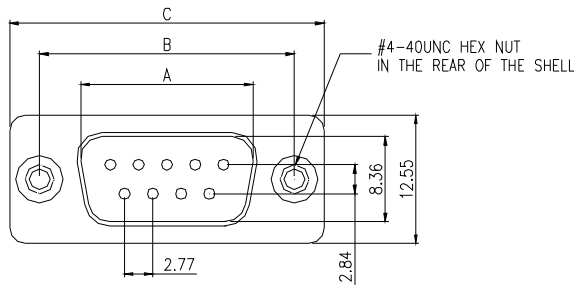
### MATERIALS

INSULATOR: P.B.T. UL 94V-0 RATED  
 SHELL: COLD ROLLER STEEL, NICKEL PLATED  
 CONTACTS: BRASS, GOLD/TIN PLATED OR GOLD PLATED

NOTE : SOME SIZES, STYLES AND OPTION ARE NON-STANDARD, NON-CANCELLABLE, NON-RETURNABLE

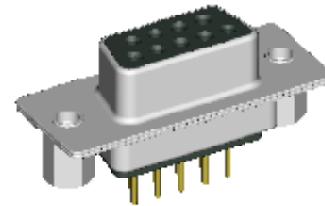
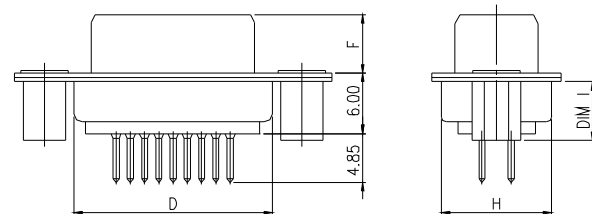
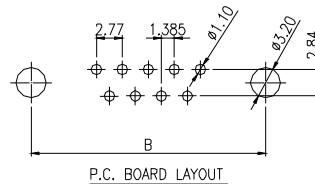
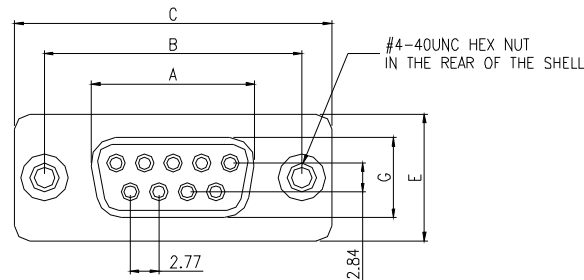
# D-SUB 200 SERIES *MOUNTING TYPE I* STRAIGHT TYPE - P

## MALE

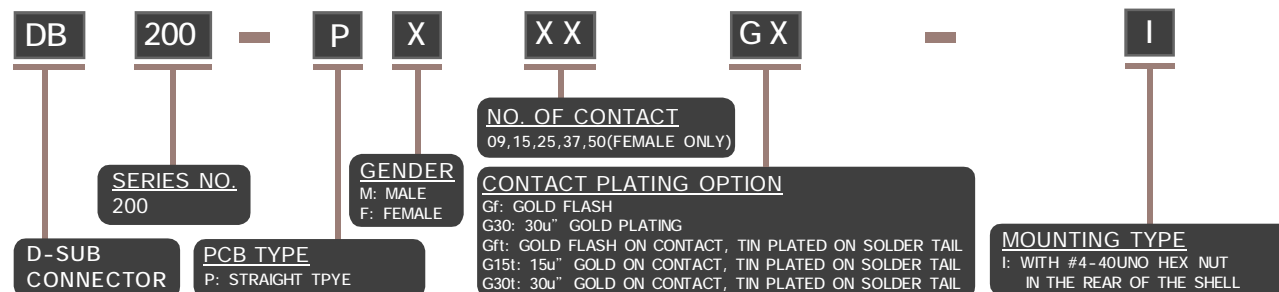


PART NO.	NO.OF CONTACTS (SHELL SIZE)	DIMENSION		
		A±0.2	B±0.25	C±0.38
DB200-PM09GX-I	9P	16.92	24.99	30.81
DB200-PM15GX-I	15P	25.25	33.32	39.14
DB200-PM25GX-I	25P	38.96	47.04	53.04
DB200-PM37GX-I	37P	55.42	63.50	69.32

## FEMALE



PART NO.	NO.OF CONTACTS (SHELL SIZE)	DIMENSION							
		A	B	C	D	E	F	G	H
DB200-PF09GX-I	9P	16.30	24.99	30.81	19.30	12.50	5.80	7.90	10.75
DB200-PF15GX-I	15P	24.60	33.32	39.14	27.60	12.50	5.80	7.90	10.75
DB200-PF25GX-I	25P	38.30	47.04	53.04	41.10	12.50	5.80	7.90	10.75
DB200-PF37GX-I	37P	54.80	63.50	69.32	57.30	12.50	5.80	7.90	10.75
DB200-PF50GX-I	50P	52.20	61.00	67.00	55.10	15.30	6.00	10.90	13.35



### ELECTRICAL CHARACTERISTIC

CONTACT CURRENT RATING: 5 AMP  
 CONTACT RESISTANCE: 25 M OHM MAX.  
 INSULATION RESISTANCE: 5000 OHM MIN. AT 500V DC  
 DIELECTRIC WITHSTANDING VOLTAGE: AC 1000V / MIN. R.M.S  
**OPERATING TEMPERATURE: 5°C - +105°C**

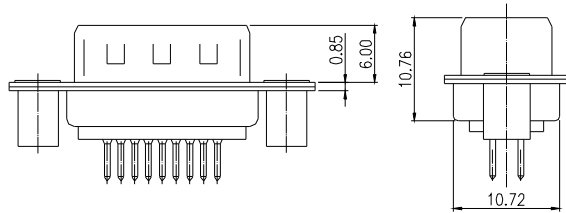
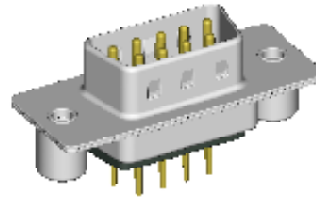
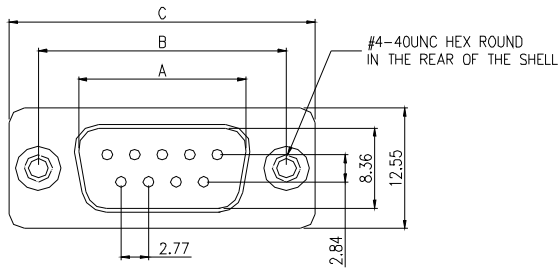
### MATERIALS

INSULATOR: P.B.T. UL 94V-0 RATED  
 SHELL: COLD ROLLER STEEL, NICKEL PLATED  
 CONTACTS: BRASS, GOLD/TIN PLATED OR GOLD PLATED

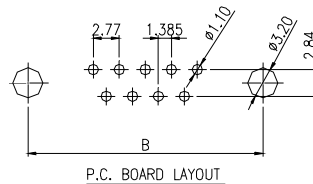
NOTE : SOME SIZES, STYLES AND OPTION ARE NON-STANDARD, NON-CANCELLABLE, NON-RETURNABLE

# D-SUB 200 SERIES *MOUNTING TYPE J* STRAIGHT TYPE - P

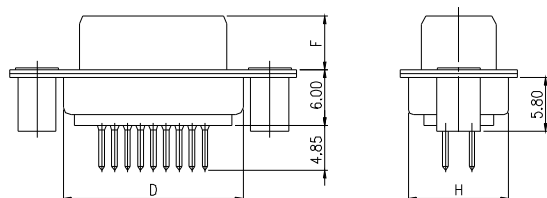
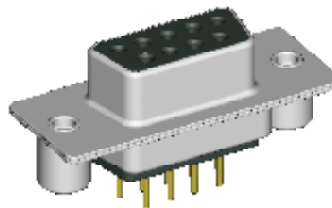
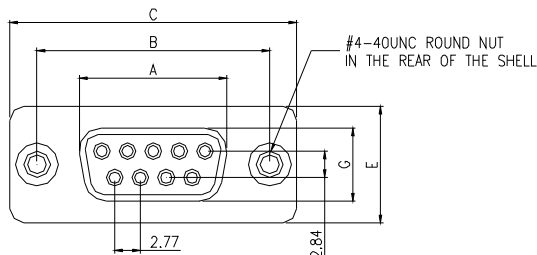
## MALE



PART NO.	NO.OF CONTACTS (SHELL SIZE)	DIMENSION		
		A±0.2	B±0.25	C±0.38
DB200-PM09GX-J	9P	16.92	24.99	30.81
DB200-PM15GX-J	15P	25.25	33.32	39.14
DB200-PM25GX-J	25P	38.96	47.04	53.04
DB200-PM37GX-J	37P	55.42	63.50	69.32



## FEMALE



PART NO.	NO.OF CONTACTS (SHELL SIZE)	DIMENSION							
		A	B	C	D	E	F	G	H
DB200-PF09GX-J	9P	16.30	24.99	30.81	19.30	12.50	5.80	7.90	10.75
DB200-PF15GX-J	15P	24.60	33.32	39.14	27.60	12.50	5.80	7.90	10.75
DB200-PF25GX-J	25P	38.30	47.04	53.04	41.10	12.50	5.80	7.90	10.75
DB200-PF37GX-J	37P	54.80	63.50	69.32	57.30	12.50	5.80	7.90	10.75
DB200-PF50GX-J	50P	52.20	61.00	67.00	55.10	15.30	6.00	10.90	13.35

<b>DB</b>	<b>200</b>	<b>P</b>	<b>X</b>	<b>XX</b>	<b>GX</b>	<b>J</b>
<b>D-SUB CONNECTOR</b>	<b>SERIES NO.</b> 200	<b>GENDER</b> M: MALE F: FEMALE	<b>NO. OF CONTACT</b> 09,15,25,37,50(FEMALE ONLY)	<b>CONTACT PLATING OPTION</b> Gf: GOLD FLASH G30: 30u" GOLD PLATING Gf: GOLD FLASH ON CONTACT, TIN PLATED ON SOLDER TAIL G15t: 15u" GOLD ON CONTACT, TIN PLATED ON SOLDER TAIL G30t: 30u" GOLD ON CONTACT, TIN PLATED ON SOLDER TAIL		<b>MOUNTING TYPE</b> J: WITH #4-40UNC ROUND NUT IN THE REAR OF THE SHELL
	<b>PCB TYPE</b> P: STRAIGHT TPYE					

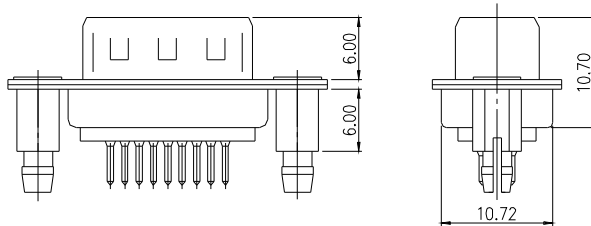
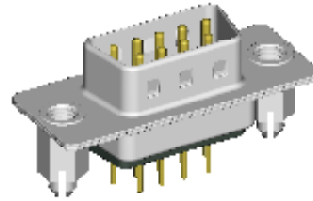
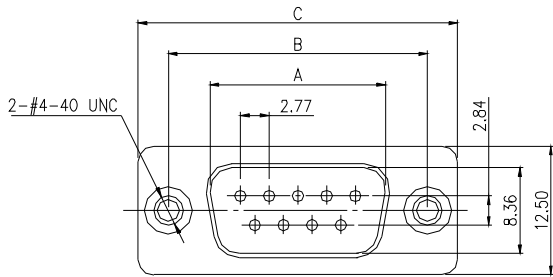
**ELECTRICAL CHARACTERISTIC**  
 CONTACT CURRENT RATING: 5 AMP  
 CONTACT RESISTANCE: 25 M OHM MAX.  
 INSULATION RESISTANCE: 5000 OHM MIN. AT 500V DC  
 DIELECTRIC WITHSTANDING VOLTAGE: AC 1000V / MIN. R.M.S  
 OPERATING TEMPERATURE:-55°C~ +105°C

**MATERIALS**  
 INSULATOR: P.B.T. UL 94V-0 RATED  
 SHELL: COLD ROLLER STEEL, NICKEL PLATED  
 CONTACTS: BRASS, GOLD/TIN PLATED OR GOLD PLATED

NOTE : SOME SIZES, STYLES AND OPTION ARE NON-STANDARD, NON-CANCELLABLE, NON-RETURNABLE

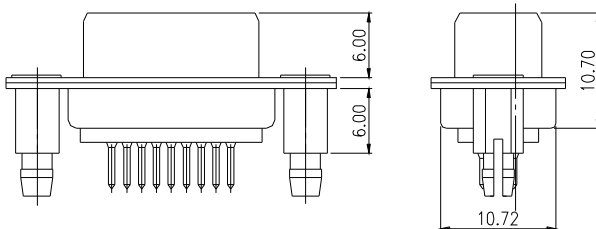
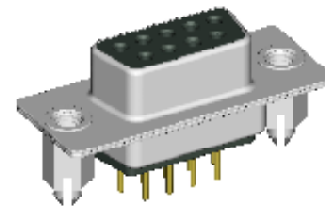
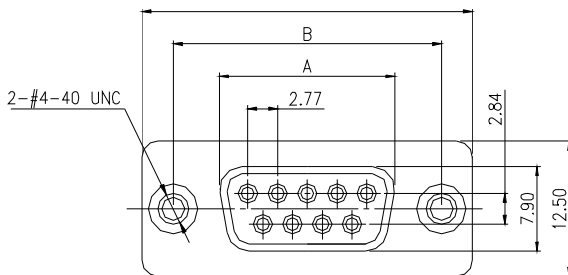
# D-SUB 200 SERIES *MOUNTING TYPE K* STRAIGHT TYPE - P

## MALE

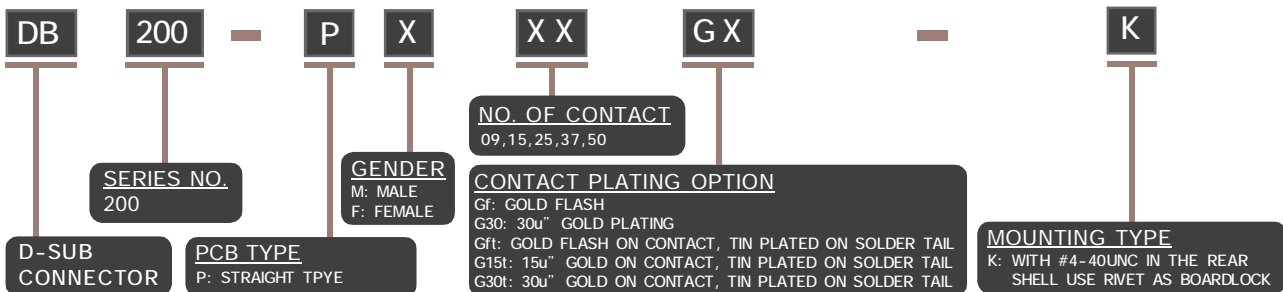


MODEL NO.	NO.OF CONTACTS (SHELL SIZE)	DIMENSION		
		A	B	C
DB200-PM09GX-K	9P	16.92	24.99	30.81
DB200-PM15GX-K	15P	25.25	33.32	39.14
DB200-PM25GX-K	25P	38.96	47.04	53.04
DB200-PM37GX-K	37P	55.42	68.50	69.32
DB200-PM50GX-K	50P	52.81	61.00	67.00

## FEMALE



MODEL NO.	NO.OF CONTACTS (SHELL SIZE)	DIMENSION		
		A	B	C
DB200-PF09GX-K	9P	16.30	24.99	30.81
DB200-PF15GX-K	15P	24.66	33.32	39.14
DB200-PF25GX-K	25P	38.38	47.04	53.04
DB200-PF37GX-K	37P	54.80	68.50	69.32
DB200-PF50GX-K	50P	52.20	61.00	67.00



### ELECTRICAL CHARACTERISTIC

CONTACT CURRENT RATING: 5 AMP  
 CONTACT RESISTANCE: 25 M OHM MAX.  
 INSULATION RESISTANCE: 5000 OHM MIN. AT 500V DC  
 DIELECTRIC WITHSTANDING VOLTAGE: AC 1000V / MIN. R.M.S  
 OPERATING TEMPERATURE: -55°C - +105°C

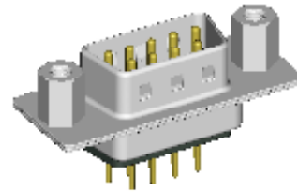
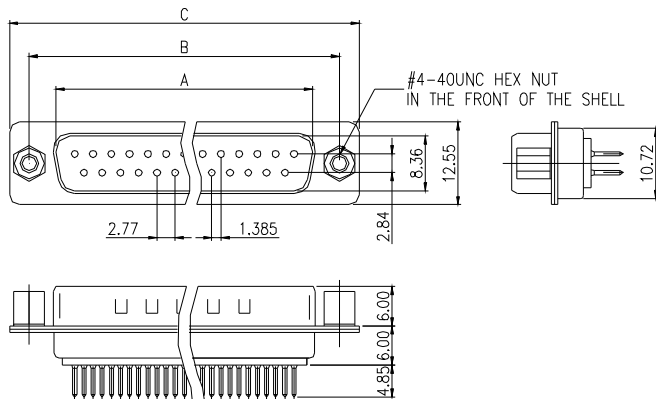
### MATERIALS

INSULATOR: P.B.T. UL 94V-0 RATED  
 SHELL: COLD ROLLER STEEL, NICKEL PLATED  
 CONTACTS: BRASS, GOLD/TIN PLATED OR GOLD PLATED

NOTE : SOME SIZES, STYLES AND OPTION ARE NON-STANDARD, NON-CANCELLABLE, NON-RETURNABLE

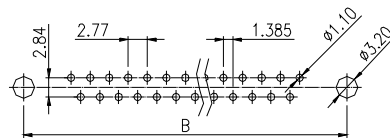
# D-SUB 200 SERIES *MOUNTING TYPE L* STRAIGHT TYPE - P

## MALE

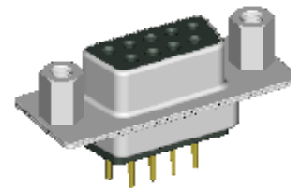
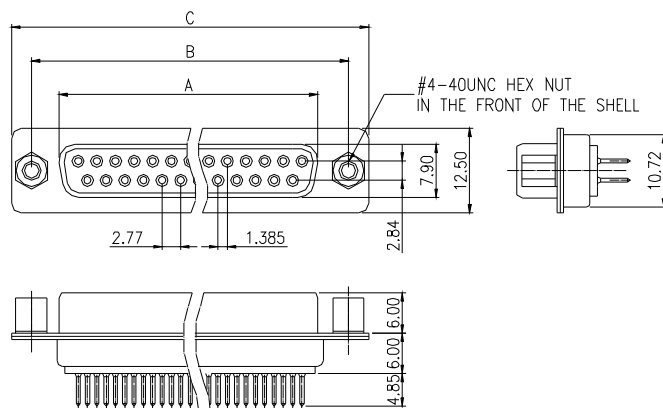


MODEL NO.	NO.OF CONTACTS (SHELL SIZE)	DIMENSION		
		A±0.2	B±0.25	C±0.38
DB200-PM09GX-L	9P	16.92	24.99	30.81
DB200-PM15GX-L	15P	25.25	33.32	39.14
DB200-PM25GX-L	25P	38.96	47.04	53.04
DB200-PM37GX-L	37P	55.42	63.50	69.32

## FEMALE



P.C. BOARD LAYOUT



MODEL NO.	NO.OF CONTACTS (SHELL SIZE)	DIMENSION		
		A±0.2	B±0.25	C±0.38
DB200-PF09GX-L	9P	16.30	24.99	30.81
DB200-PF15GX-L	15P	24.66	33.32	39.14
DB200-PF25GX-L	25P	38.38	47.04	53.04
DB200-PF37GX-L	37P	54.80	63.50	69.32

<b>DB</b>	<b>200</b>	<b>P</b>	<b>X</b>	<b>XX</b>	<b>GX</b>	<b>L</b>
D-SUB CONNECTOR	SERIES NO. 200	GENDER M: MALE F: FEMALE	NO. OF CONTACT 09, 15, 25, 37	CONTACT PLATING OPTION Gf: GOLD FLASH G30: 30u" GOLD PLATING Gf: GOLD FLASH ON CONTACT, TIN PLATED ON SOLDER TAIL G15t: 15u" GOLD ON CONTACT, TIN PLATED ON SOLDER TAIL G30t: 30u" GOLD ON CONTACT, TIN PLATED ON SOLDER TAIL		MOUNTING TYPE L: WITH #4-40UNC IN HEX NUT IN THE FRONT OF THE SHELL
	PCB TYPE P: STRAIGHT TPYE					

### ELECTRICAL CHARACTERISTIC

CONTACT CURRENT RATING: 5 AMP  
 CONTACT RESISTANCE: 25 M OHM MAX.  
 INSULATION RESISTANCE: 5000 OHM MIN. AT 500V DC  
 DIELECTRIC WITHSTANDING VOLTAGE: AC 1000V / MIN. R.M.S  
 OPERATING TEMPERATURE:-55°C~ +105°C

### MATERIALS

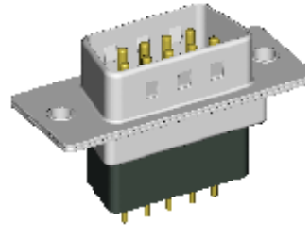
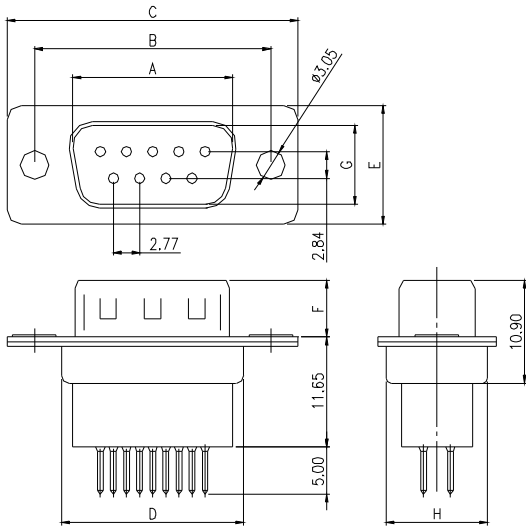
INSULATOR: P.B.T. UL 94V-0 RATED  
 SHELL: COLD ROLLER STEEL, NICKEL PLATED  
 CONTACTS: BRASS, GOLD/TIN PLATED OR GOLD PLATED

NOTE : SOME SIZES, STYLES AND OPTION ARE NON-STANDARD, NON-CANCELLABLE, NON-RETURNABLE

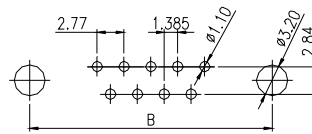


# D-SUB 210 SERIES *MOUNTING TYPE H* STRAIGHT TYPE - P

## MALE

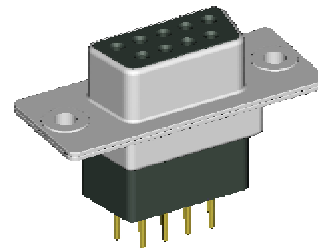
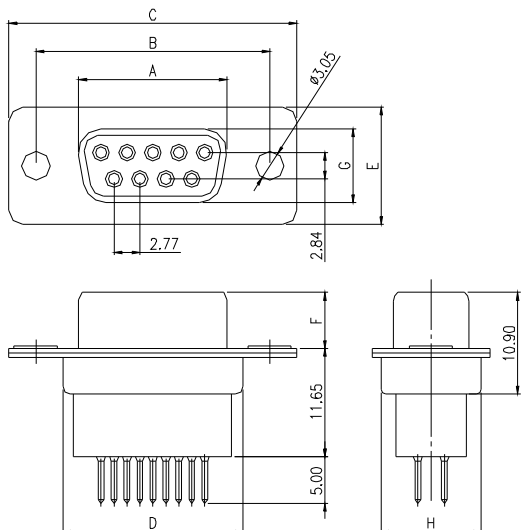


PART NO.	NO.OF CONTACTS (SHELL SIZE)	DIMENSION							
		A	B	C	D	E	F	G	H
DB210-PM09GX-H	9P	16.92	24.99	30.81	19.30	12.50	6.00	8.30	10.75
DB210-PM15GX-H	15P	25.25	33.32	39.14	27.60	12.50	6.00	8.30	10.75
DB210-PM25GX-H	25P	38.96	47.04	53.04	41.10	12.50	6.00	8.30	10.75
DB210-PM37GX-H	37P	55.42	63.50	69.32	57.30	12.50	6.00	8.30	10.75
DB210-PM50GX-H	50P	52.81	61.00	67.00	55.10	15.30	6.00	11.10	13.35



P.C. BOARD LAYOUT

## FEMALE



PART NO.	NO.OF CONTACTS (SHELL SIZE)	DIMENSION							
		A	B	C	D	E	F	G	H
DB210-PF09GX-H	9P	16.30	24.99	30.81	19.30	12.50	5.80	7.90	10.75
DB210-PF15GX-H	15P	24.60	33.32	39.14	27.60	12.50	5.80	7.90	10.75
DB210-PF25GX-H	25P	38.30	47.04	53.04	41.10	12.50	5.80	7.90	10.75
DB210-PF37GX-H	37P	54.80	63.50	69.32	57.30	12.50	5.80	7.90	10.75
DB210-PF50GX-H	50P	52.20	61.00	67.00	55.10	15.30	6.00	10.90	13.35

<b>DB</b>	<b>210</b>	-	<b>P</b>	<b>X</b>	<b>XX</b>	<b>GX</b>	-	<b>H</b>
<b>D-SUB CONNECTOR</b>	<b>SERIES NO.</b> 210		<b>GENDER</b> M: MALE F: FEMALE		<b>NO. OF CONTACT</b> 09, 15, 25, 37, 50			<b>MOUNTING TYPE</b> H: WITH MOUNTING HOLE ONLY
	<b>PCB TYPE</b> P: STRAIGHT TPYE				<b>CONTACT PLATING OPTION</b> Gf: GOLD FLASH G30: 30u" GOLD PLATING Gft: GOLD FLASH ON CONTACT, TIN PLATED ON SOLDER TAIL G15t: 15u" GOLD ON CONTACT, TIN PLATED ON SOLDER TAIL G30t: 30u" GOLD ON CONTACT, TIN PLATED ON SOLDER TAIL			

### ELECTRICAL CHARACTERISTIC

CONTACT CURRENT RATING: 5 AMP  
 CONTACT RESISTANCE: 25 M OHM MAX.  
 INSULATION RESISTANCE: 5000 OHM MIN. AT 500V DC  
 DIELECTRIC WITHSTANDING VOLTAGE: AC 1000V / MIN. R.M.S  
 OPERATING TEMPERATURE:-55°C~ +105°C

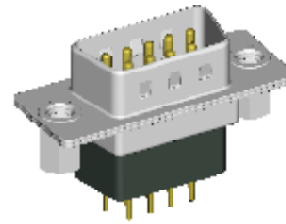
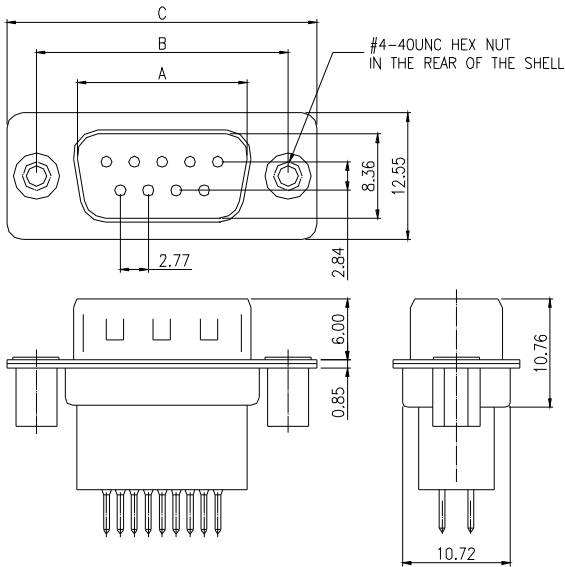
### MATERIALS

INSULATOR: P.B.T. UL 94V-0 RATED  
 SHELL: COLD ROLLER STEEL, NICKEL PLATED  
 CONTACTS: BRASS, GOLD/TIN PLATED OR GOLD PLATED

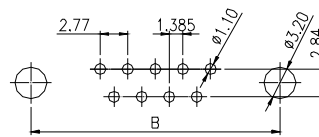
NOTE : SOME SIZES, STYLES AND OPTION ARE NON-STANDARD, NON-CANCELLABLE, NON-RETURNABLE

# D-SUB 210 SERIES *MOUNTING TYPE I* STRAIGHT TYPE - P

## MALE

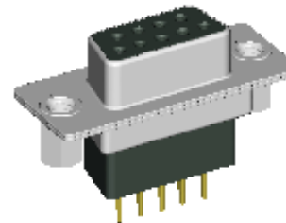
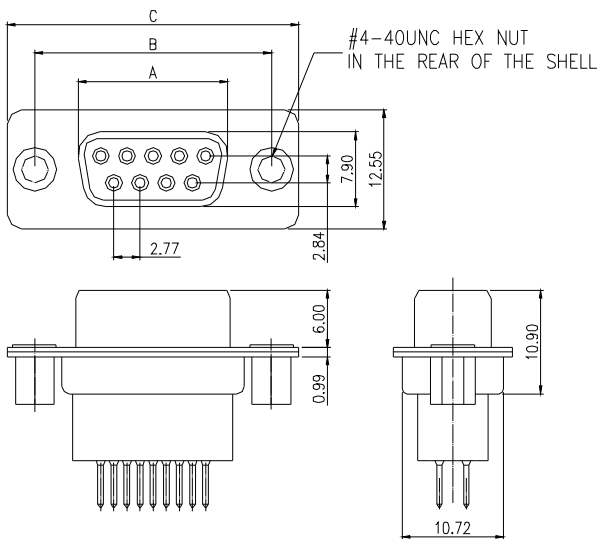


PART NO.	NO.OF CONTACTS (SHELL SIZE)	DIMENSION		
		A±0.2	B±0.25	C±0.38
DB210-PM09GX-I	9P	16.92	24.99	30.81
DB210-PM15GX-I	15P	25.25	33.32	39.14
DB210-PM25GX-I	25P	38.96	47.04	53.04
DB210-PM37GX-I	37P	55.42	63.50	69.32

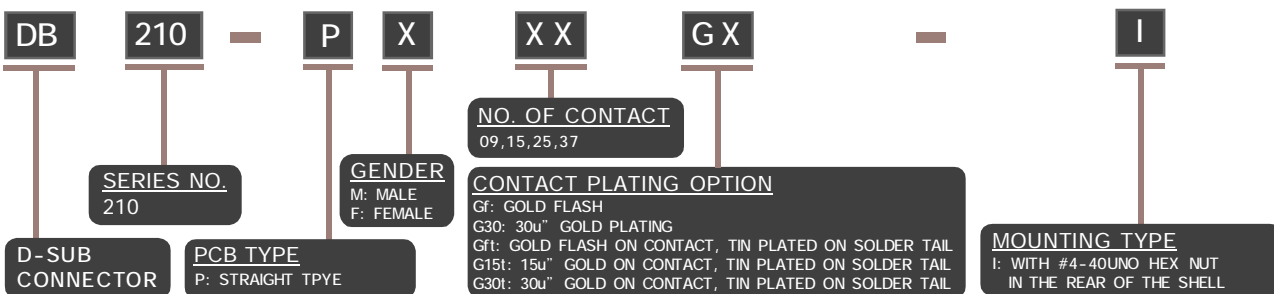


P.C. BOARD LAYOUT

## FEMALE



PART NO.	NO.OF CONTACTS (SHELL SIZE)	DIMENSION		
		A±0.2	B±0.25	C±0.38
DB210-PF09GX-I	9P	16.30	24.99	30.81
DB210-PF15GX-I	15P	24.66	33.32	39.14
DB210-PF25GX-I	25P	38.38	47.04	53.04
DB210-PF37GX-I	37P	54.84	63.50	69.32



### ELECTRICAL CHARACTERISTIC

CONTACT CURRENT RATING: 5 AMP  
 CONTACT RESISTANCE: 25 M OHM MAX.  
 INSULATION RESISTANCE: 5000 OHM MIN. AT 500V DC  
 DIELECTRIC WITHSTANDING VOLTAGE: AC 1000V / MIN. R.M.S  
 OPERATING TEMPERATURE:-55°C- +105°C

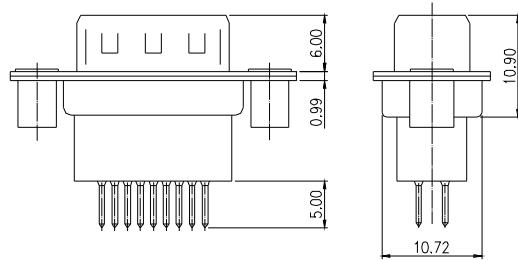
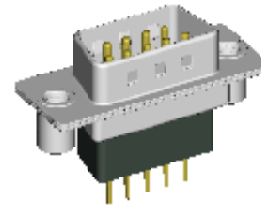
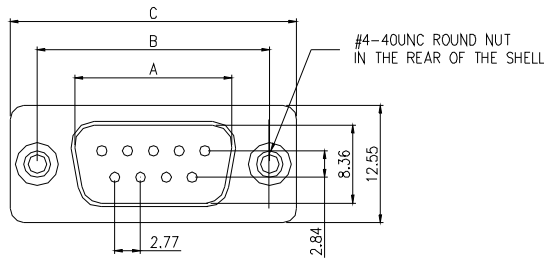
### MATERIALS

INSULATOR: P.B.T. UL 94V-0 RATED  
 SHELL: COLD ROLLER STEEL, NICKEL PLATED  
 CONTACTS: BRASS, GOLD/TIN PLATED OR GOLD PLATED

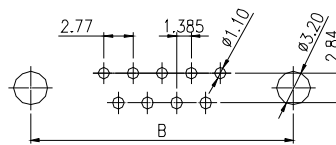
NOTE : SOME SIZES, STYLES AND OPTION ARE NON-STANDARD, NON-CANCELLABLE, NON-RETURNABLE

# D-SUB 210 SERIES *MOUNTING TYPE J* STRAIGHT TYPE - P

## MALE

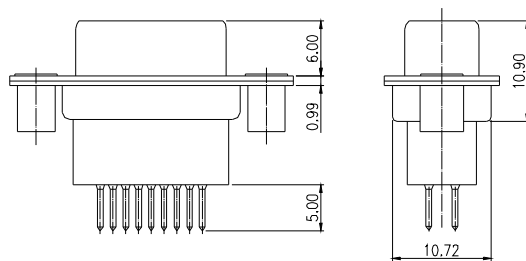
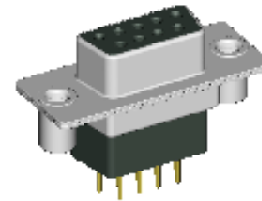
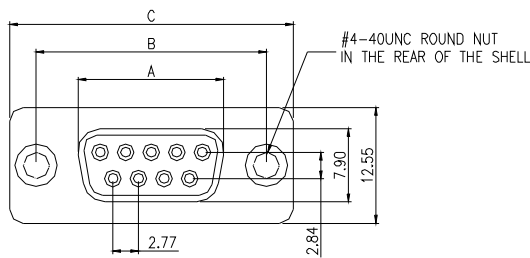


MODEL NO.	NO.OF CONTACTS (SHELL SIZE)	DIMENSION		
		A±0.2	B±0.25	C±0.38
DB210-PM09GX-J	9P	16.92	24.99	30.81
DB210-PM15GX-J	15P	25.25	33.32	39.14
DB210-PM25GX-J	25P	38.96	47.04	53.04
DB210-PM37GX-J	37P	55.42	63.50	69.32



P.C. BOARD LAYOUT

## FEMALE



PART NO.	NO.OF CONTACTS (SHELL SIZE)	DIMENSION		
		A±0.2	B±0.25	C±0.38
DB210-PF09GX-J	9P	16.30	24.99	30.81
DB210-PF15GX-J	15P	24.66	33.32	39.14
DB210-PF25GX-J	25P	38.38	47.04	53.04
DB210-PF37GX-J	37P	54.84	63.50	69.32

<b>DB</b>	<b>210</b>	<b>-</b>	<b>P</b>	<b>X</b>	<b>XX</b>	<b>GX</b>	<b>-</b>	<b>J</b>
D-SUB CONNECTOR	SERIES NO. 210	GENDER M: MALE F: FEMALE	NO. OF CONTACT 09, 15, 25, 37	CONTACT PLATING OPTION Gf: GOLD FLASH G30: 30u" GOLD PLATING GfT: GOLD FLASH ON CONTACT, TIN PLATED ON SOLDER TAIL G15t: 15u" GOLD ON CONTACT, TIN PLATED ON SOLDER TAIL G30t: 30u" GOLD ON CONTACT, TIN PLATED ON SOLDER TAIL	MOUNTING TYPE J: WITH #4-40UNC ROUND NUT IN THE REAR OF THE SHELL			
	PCB TYPE P: STRAIGHT TYPE							

### ELECTRICAL CHARACTERISTIC

CONTACT CURRENT RATING: 5 AMP  
 CONTACT RESISTANCE: 25 M OHM MAX.  
 INSULATION RESISTANCE: 5000 OHM MIN. AT 500V DC  
 DIELECTRIC WITHSTANDING VOLTAGE: AC 1000V / MIN. R.M.S  
 OPERATING TEMPERATURE:-55°C~ +105°C

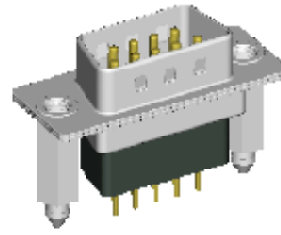
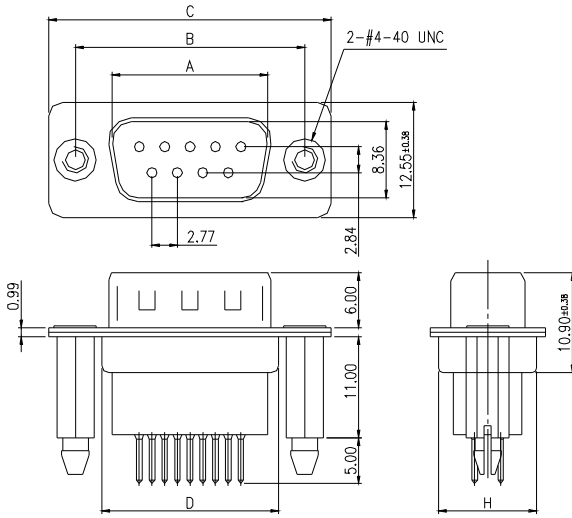
### MATERIALS

INSULATOR: P.B.T. UL 94V-0 RATED  
 SHELL: COLD ROLLER STEEL, NICKEL PLATED  
 CONTACTS: BRASS, GOLD/TIN PLATED OR GOLD PLATED

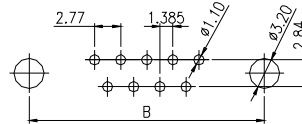
NOTE : SOME SIZES, STYLES AND OPTION ARE NON-STANDARD, NON-CANCELLABLE, NON-RETURNABLE

# D-SUB 210 SERIES *MOUNTING TYPE K* STRAIGHT TYPE - P

## MALE

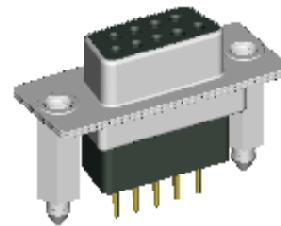
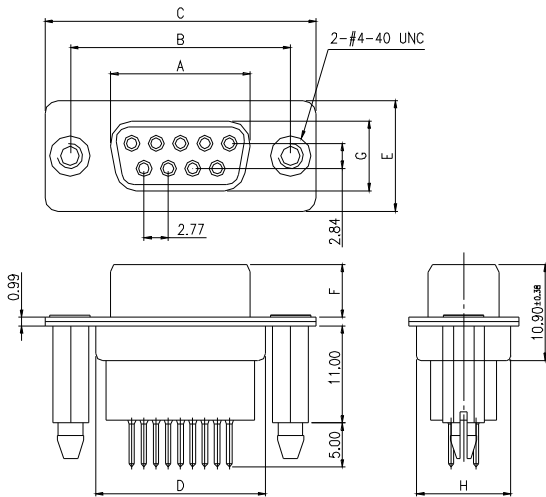


MODEL NO.	NO.OF CONTACTS (SHELL SIZE)	DIMENSION		
		A	B	C
DB210-PM09GX-K	9P	16.92	24.99	30.81
DB210-PM15GX-K	15P	25.25	33.32	39.14
DB210-PM25GX-K	25P	38.96	47.04	53.04
DB210-PM37GX-K	37P	55.42	63.50	69.32
DB210-PM50GX-K	50P	52.81	61.00	67.00



P.C. BOARD LAYOUT

## FEMALE



PART NO.	NO.OF CONTACTS (SHELL SIZE)	DIMENSION							
		A	B	C	D	E	F	G	H
DB210-PF09GX-K	9P	16.30	24.99	30.81	19.30	12.50	5.80	7.90	10.75
DB210-PF15GX-K	15P	24.60	33.32	39.14	27.60	12.50	5.80	7.90	10.75
DB210-PF25GX-K	25P	38.30	47.04	53.04	41.10	12.50	5.80	7.90	10.75
DB210-PF37GX-K	37P	54.80	63.50	69.32	57.30	12.50	5.80	7.90	10.75
DB210-PF50GX-K	50P	52.20	61.00	67.00	55.10	15.30	6.00	10.90	13.35

<b>DB</b>	<b>210</b>	-	<b>P</b>	<b>X</b>	<b>XX</b>	<b>GX</b>	-	<b>K</b>
<b>D-SUB CONNECTOR</b>	<b>SERIES NO.</b> 210		<b>GENDER</b> M: MALE F: FEMALE	<b>NO. OF CONTACT</b> 09, 15, 25, 37, 50	<b>CONTACT PLATING OPTION</b> Gf: GOLD FLASH G30: 30u" GOLD PLATING Gf: GOLD FLASH ON CONTACT, TIN PLATED ON SOLDER TAIL G15t: 15u" GOLD ON CONTACT, TIN PLATED ON SOLDER TAIL G30t: 30u" GOLD ON CONTACT, TIN PLATED ON SOLDER TAIL			<b>MOUNTING TYPE</b> K: WITH #4-40UNC IN THE REAR SHELL USE RIVET AS BOARDLOCK
	<b>PCB TYPE</b> P: STRAIGHT TYPE							

### ELECTRICAL CHARACTERISTIC

CONTACT CURRENT RATING: 5 AMP  
 CONTACT RESISTANCE: 25 M OHM MAX.  
 INSULATION RESISTANCE: 5000 OHM MIN. AT 500V DC  
 DIELECTRIC WITHSTANDING VOLTAGE: AC 1000V / MIN. R.M.S  
 OPERATING TEMPERATURE:-55°C- +105°C

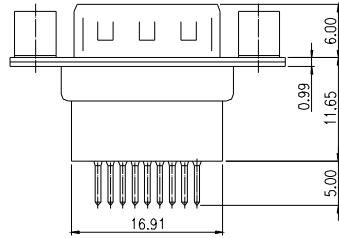
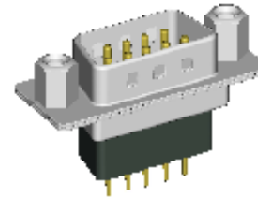
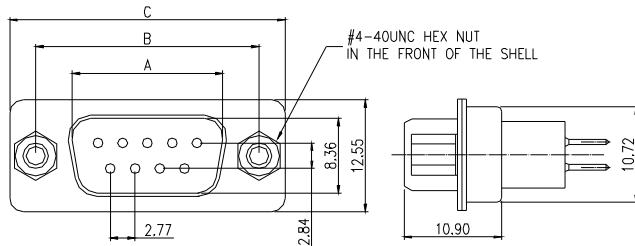
### MATERIALS

INSULATOR: P.B.T. UL 94V-0 RATED  
 SHELL: COLD ROLLER STEEL, NICKEL PLATED  
 CONTACTS: BRASS, GOLD/TIN PLATED OR GOLD PLATED

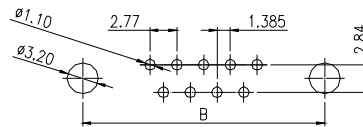
NOTE : SOME SIZES, STYLES AND OPTION ARE NON-STANDARD, NON-CANCELLABLE, NON-RETURNABLE

# D-SUB 210 SERIES *MOUNTING TYPE L* STRAIGHT TYPE - P

## MALE

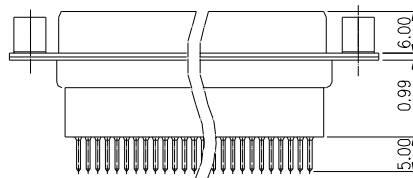
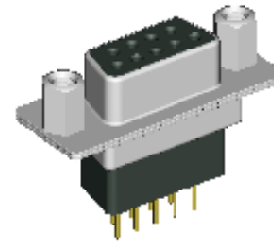
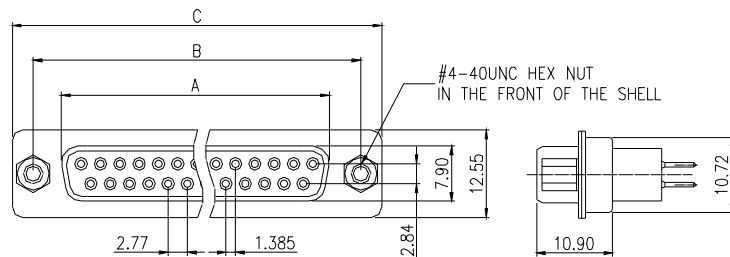


MODEL NO.	NO.OF CONTACTS (SHELL SIZE)	DIMENSION		
		A±0.2	B±0.25	C±0.38
DB210-PM09GX-L	9P	16.92	24.99	30.81
DB210-PM15GX-L	15P	25.25	33.32	39.14
DB210-PM25GX-L	25P	38.96	47.04	53.04
DB210-PM37GX-L	37P	55.42	63.50	69.32

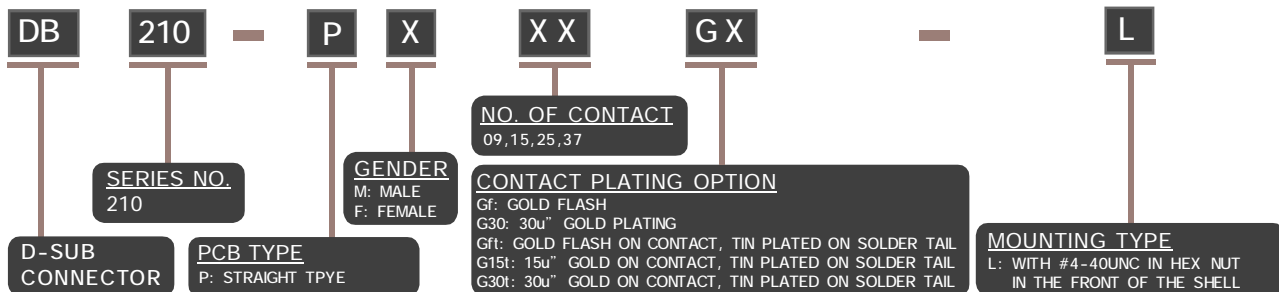


P.C. BOARD LAYOUT

## FEMALE



MODEL NO.	NO.OF CONTACTS (SHELL SIZE)	DIMENSION		
		A±0.2	B±0.25	C±0.38
DB210-PF09GX-L	9P	16.30	24.99	30.81
DB210-PF15GX-L	15P	24.66	33.32	39.14
DB210-PF25GX-L	25P	38.38	47.04	53.04
DB210-PF37GX-L	37P	54.84	63.50	69.32



### ELECTRICAL CHARACTERISTIC

CONTACT CURRENT RATING: 5 AMP  
 CONTACT RESISTANCE: 25 M OHM MAX.  
 INSULATION RESISTANCE: 5000 OHM MIN. AT 500V DC  
 DIELECTRIC WITHSTANDING VOLTAGE: AC 1000V / MIN. R.M.S  
 OPERATING TEMPERATURE:-55°C~ +105°C

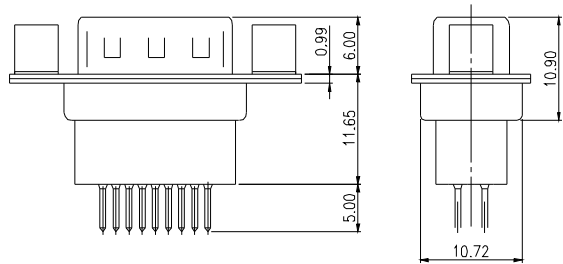
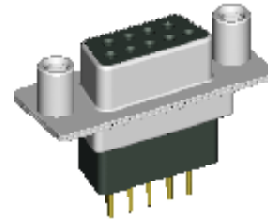
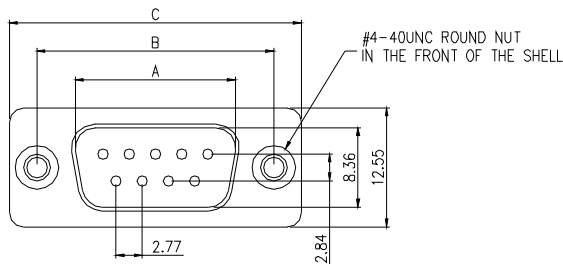
### MATERIALS

INSULATOR: P.B.T. UL 94V-0 RATED  
 SHELL: COLD ROLLER STEEL, NICKEL PLATED  
 CONTACTS: BRASS, GOLD/TIN PLATED OR GOLD PLATED

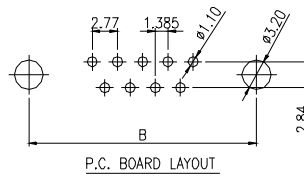
NOTE : SOME SIZES, STYLES AND OPTION ARE NON-STANDARD, NON-CANCELLABLE, NON-RETURNABLE

# D-SUB 210 SERIES *MOUNTING TYPE M* STRAIGHT TYPE - P

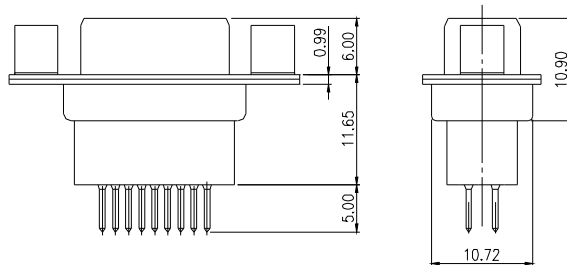
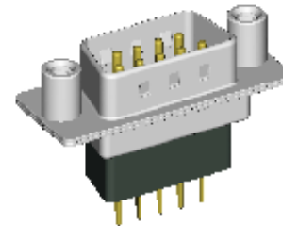
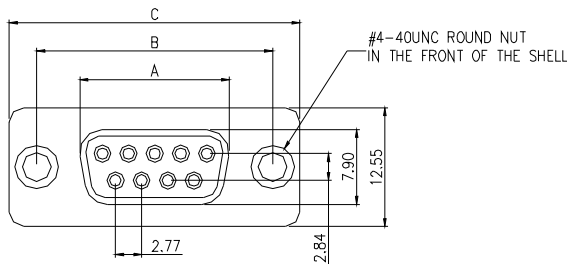
## MALE



PART NO.	NO.OF CONTACTS (SHELL SIZE)	DIMENSION		
		A	B	C
DB210-PM09GX-M	9P	16.92	24.99	30.81
DB210-PM15GX-M	15P	25.25	33.32	39.14
DB210-PM25GX-M	25P	38.96	47.04	53.04
DB210-PM37GX-M	37P	55.42	63.50	69.32



## FEMALE



PART NO.	NO.OF CONTACTS (SHELL SIZE)	DIMENSION		
		A	B	C
DB210-PF09GX-M	9P	16.30	24.99	30.81
DB210-PF15GX-M	15P	24.60	33.32	39.14
DB210-PF25GX-M	25P	38.30	47.04	53.04
DB210-PF37GX-M	37P	54.80	63.50	69.32

<b>DB</b>	<b>210</b>	<b>-</b>	<b>P</b>	<b>X</b>	<b>XX</b>	<b>GX</b>	<b>-</b>	<b>M</b>
<b>D-SUB CONNECTOR</b>	<b>SERIES NO.</b> 210		<b>GENDER</b> M: MALE F: FEMALE	<b>NO. OF CONTACT</b> 09, 15, 25, 37	<b>CONTACT PLATING OPTION</b> GF: GOLD FLASH G30: 30u" GOLD PLATING GFt: GOLD FLASH ON CONTACT, TIN PLATED ON SOLDER TAIL G15t: 15u" GOLD ON CONTACT, TIN PLATED ON SOLDER TAIL G30t: 30u" GOLD ON CONTACT, TIN PLATED ON SOLDER TAIL			<b>MOUNTING TYPE</b> M: WITH #4-40UNC ROUND NUT IN THE FRONT OF THE SHELL
	<b>PCB TYPE</b> P: STRAIGHT TYPE							

### ELECTRICAL CHARACTERISTIC

CONTACT CURRENT RATING: 5 AMP  
 CONTACT RESISTANCE: 25 M OHM MAX.  
 INSULATION RESISTANCE: 5000 OHM MIN. AT 500V DC  
 DIELECTRIC WITHSTANDING VOLTAGE: AC 1000V / MIN. R.M.S  
 OPERATING TEMPERATURE: -55°C - +105°C

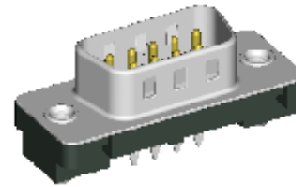
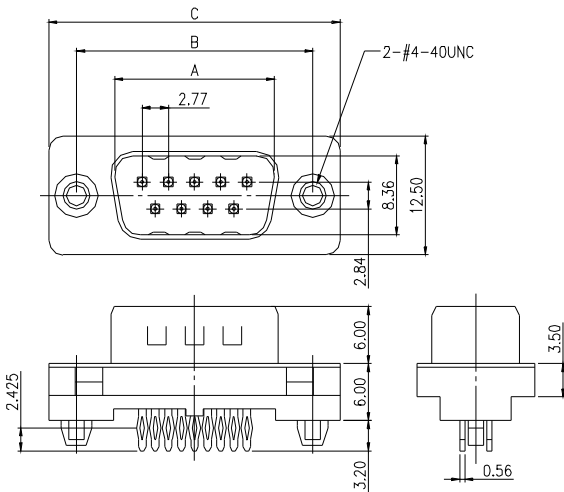
### MATERIALS

INSULATOR: P.B.T. UL 94V-0 RATED  
 SHELL: COLD ROLLER STEEL, NICKEL PLATED  
 CONTACTS: BRASS, GOLD/TIN PLATED OR GOLD PLATED

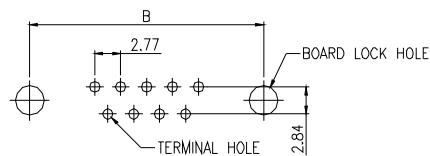
NOTE : SOME SIZES, STYLES AND OPTION ARE NON-STANDARD, NON-CANCELLABLE, NON-RETURNABLE

# D-SUB 250 SERIES *MOUNTING TYPE 2P* PRESS FIT TYPE - Pf

## MALE

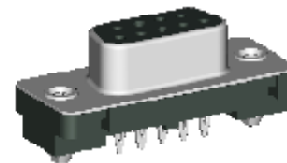
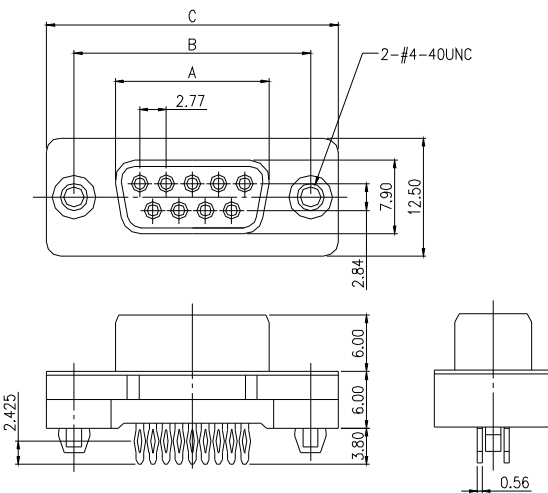


PART NO.	NO.OF CONTACTS (SHELL SIZE)	DIMENSION		
		A	B	C
DB250-PfM09GX-2P	9P	16.92	24.99	30.81
DB250-PfM15GX-2P	15P	25.50	33.32	39.14
DB250-PfM25GX-2P	25P	38.96	47.04	53.04
DB250-PfM37GX-2P	37P	55.42	63.50	69.32



RECOMMENDED PCB LAYOUT

## FEMALE



PART NO.	NO.OF CONTACTS (SHELL SIZE)	DIMENSION		
		A	B	C
DB250-PfF09GX-2P	9P	16.30	24.99	30.81
DB250-PfF15GX-2P	15P	24.66	33.32	39.14
DB250-PfF25GX-2P	25P	38.38	47.04	53.04
DB250-PfF37GX-2P	37P	54.84	63.50	69.32

<b>DB</b>	<b>250</b>	<b>Pf</b>	<b>X</b>	<b>XX</b>	<b>GX</b>	<b>P</b>
D-SUB CONNECTOR		GENDER M: MALE F: FEMALE		NO. OF CONTACT 09, 15, 25, 37	CONTACT PLATING OPTION Gf: GOLD FLASH G30: 30u" GOLD PLATING Gf: GOLD FLASH ON CONTACT, TIN PLATED ON SOLDER TAIL G15: 15u" GOLD ON CONTACT, TIN PLATED ON SOLDER TAIL G30: 30u" GOLD ON CONTACT, TIN PLATED ON SOLDER TAIL	MOUNTING TYPE P: WITH #4-40UNO IN THE REAR SHELL USE PRESS FIT BOARDLOCK
SERIES NO. 250		PCB TYPE Pf: PRESS FIT TYPE				

**ELECTRICAL CHARACTERISTIC**  
 CONTACT CURRENT RATING: 5 AMP  
 CONTACT RESISTANCE: 25 M OHM MAX.  
 INSULATION RESISTANCE: 5000 OHM MIN. AT 500V DC  
 DIELECTRIC WITHSTANDING VOLTAGE: AC 1000V / MIN. R.M.S  
 OPERATING TEMPERATURE:-55°C~ +105°C

**MATERIALS**  
 INSULATOR: P.B.T. UL 94V-0 RATED  
 SHELL: COLD ROLLER STEEL, NICKEL PLATED  
 CONTACTS: BRASS, GOLD/TIN PLATED OR GOLD PLATED

NOTE : SOME SIZES, STYLES AND OPTION ARE NON-STANDARD, NON-CANCELLABLE, NON-RETURNABLE