

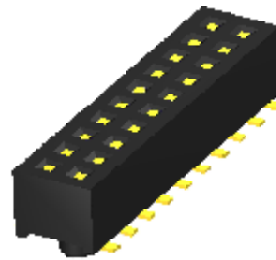
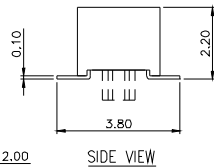
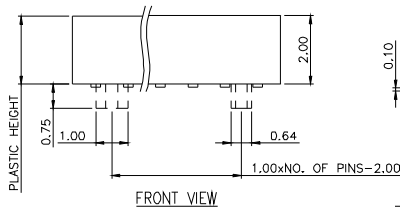
**MMI**

---

**PIN RECEPTACLE**  
**PITCH: 1.00x1.00mm**

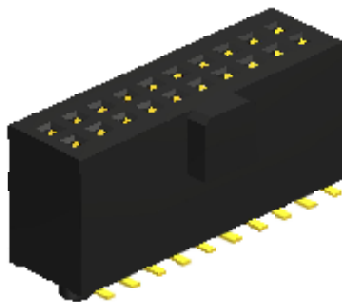
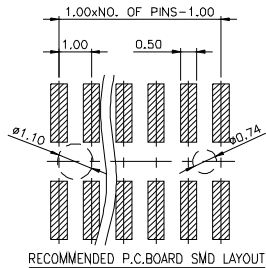
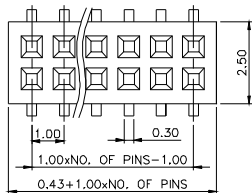
---

# 1.00x1.00 mm HEADER RECEPTACLE SURFACE MOUNT TYPE - Pt



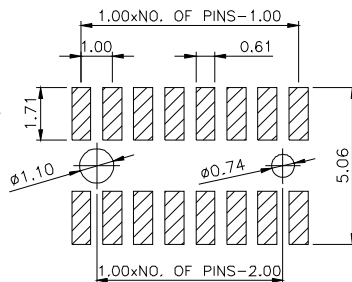
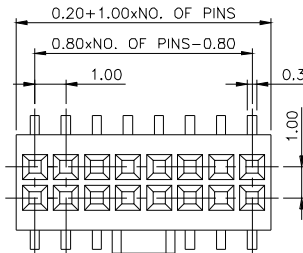
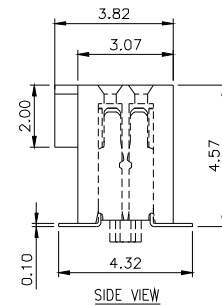
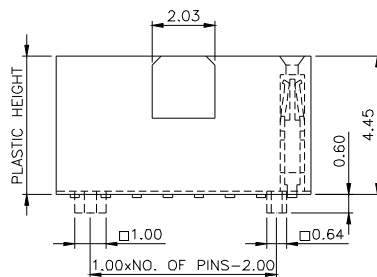
2 ROW

SURFACE MOUNT TYPE  
PR001



2 ROW

SURFACE MOUNT TYPE  
PR002



PR002

<b>PR</b>	<b>e</b>	<b>XXX</b>	<b>-</b>	<b>Pt</b>	<b>##</b>	<b>XX</b>	<b>GX</b>	<b>-</b>	<b>X</b>	<b>XX</b>
HEADER RECEPTACLE	SERIES NO. 001,002			PCB TYPE Pt: SURFACE MOUNT TYPE	NO. OF ROW 02				PEG OPTION P: WITH PEG BLANK: WITHOUT PEG	CAP OPTION CP: WITH CAP BLANK: WITHOUT CAP
PITCH 1.00x1.00 mm					NO. OF PINS PER ROW					
					<b>CONTACT PLATING OPTION</b> Gf: GOLD FLASH Gft: GOLD FLASH ON CONTACT, TIN PLATED ON SOLDER TAIL G15t: 15u" GOLD ON CONTACT, TIN PLATED ON SOLDER TAIL G30t: 30u" GOLD ON CONTACT, TIN PLATED ON SOLDER TAIL G50t: 50u" GOLD ON CONTACT, TIN PLATED ON SOLDER TAIL					

## SPECIFICATIONS

CURRENT RATING : 1 AMPS.  
INSULATOR RESISTANCE : 5000 OHM MIN.  
CONTACT RESISTANCE: 20m OHM MAX.  
DIELECTRIC WITHSTANDING : AC 500 V.  
OPERATING TEMPERATURE : - 40°C ~ + 105°C  
CONTACT MATERIAL : PHOSPHOR BRONZE

## MATERIALS

INSULATOR MATERIAL : LCP  
FINISH : GOLD FLASH

NOTE : SOME SIZES, STYLES AND OPTION ARE NON-STANDARD, NON-CANCELLABLE, NON-RETURNABLE