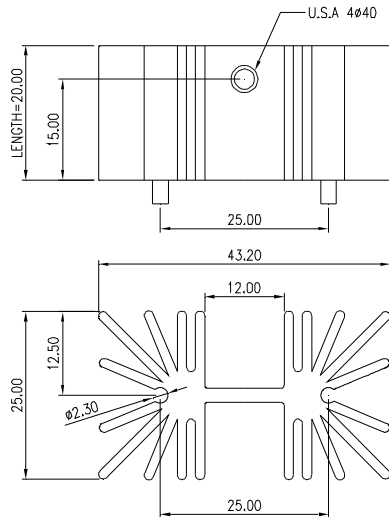


MMI *PRECISION CORPORATION*

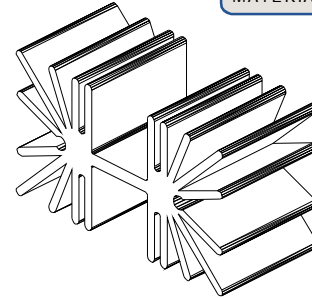
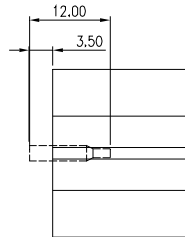
HEAT SINK

HS2XX SERIES

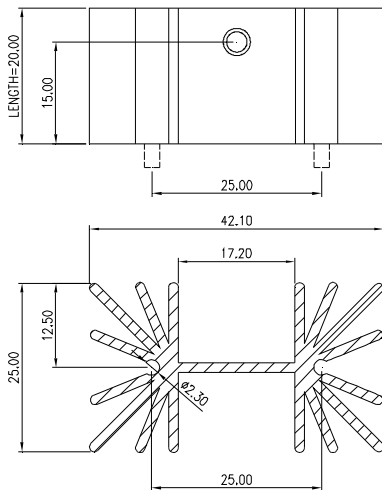
HEAT SINK HS204 SERIES



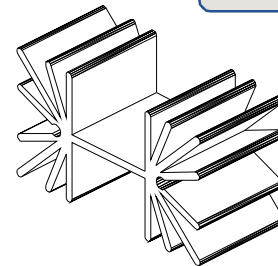
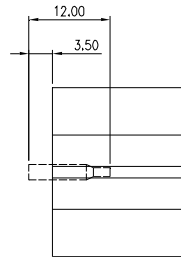
HS	204	20	X
HEAT SINK	SERIES NO. 204	LENGTH 20mm	PEG OPTION BLANK: WITHOUT PEG P: WITH PEG
MATERIAL: ALUMINUM			



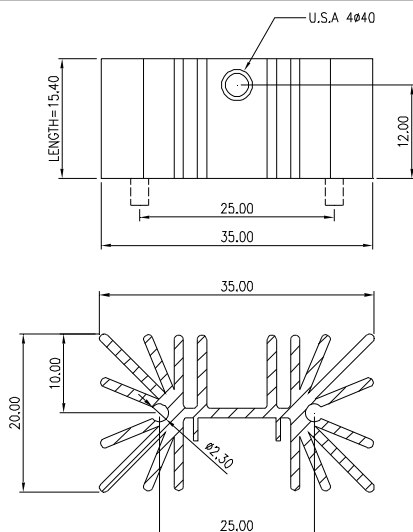
HEAT SINK HS205 SERIES



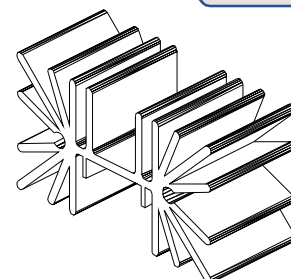
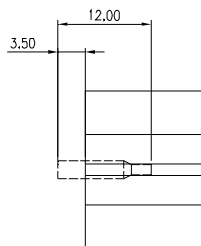
HS	205	20	X
HEAT SINK	SERIES NO. 205	LENGTH 20mm	PEG OPTION BLANK: WITHOUT PEG P: WITH PEG
MATERIAL: ALUMINUM			



HEAT SINK HS206 SERIES

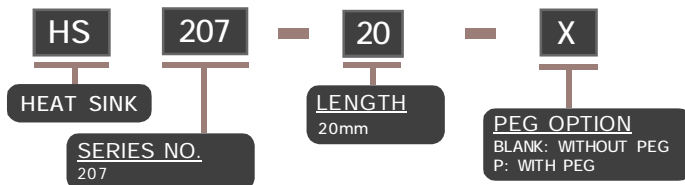
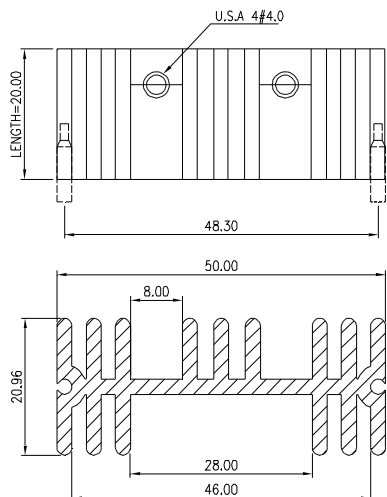


HS	206	15.4	X
HEAT SINK	SERIES NO. 206	LENGTH 15.4mm	PEG OPTION BLANK: WITHOUT PEG P: WITH PEG
MATERIAL: ALUMINUM			

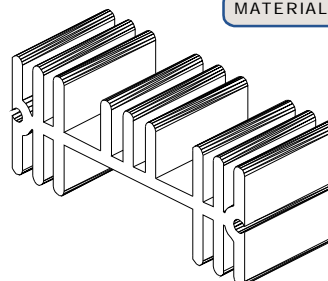
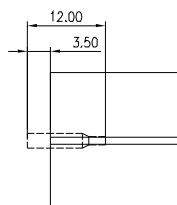


NOTE : SOME SIZES, STYLES AND OPTION ARE NON-STANDARD, NON-CANCELLABLE, NON-RETURNABLE

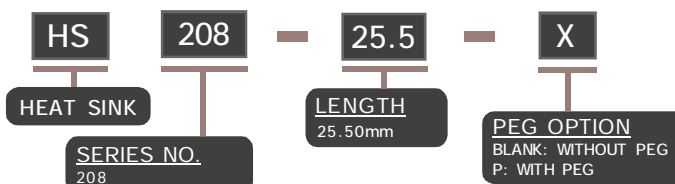
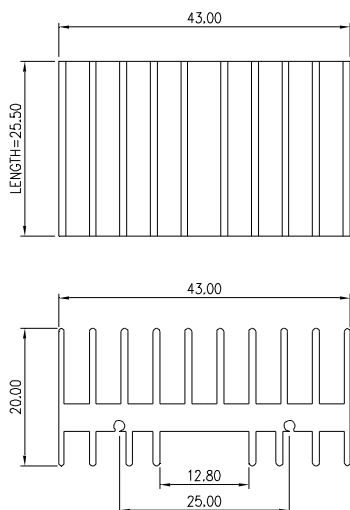
HEAT SINK HS207 SERIES



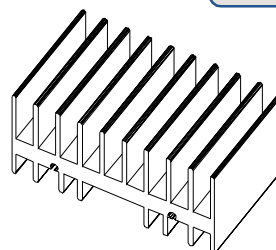
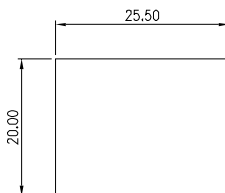
MATERIAL: ALUMINUM



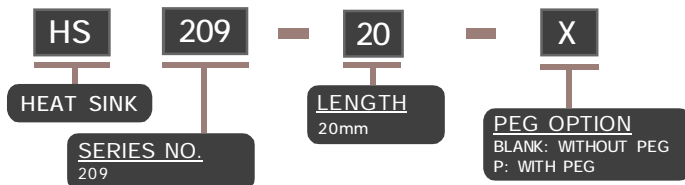
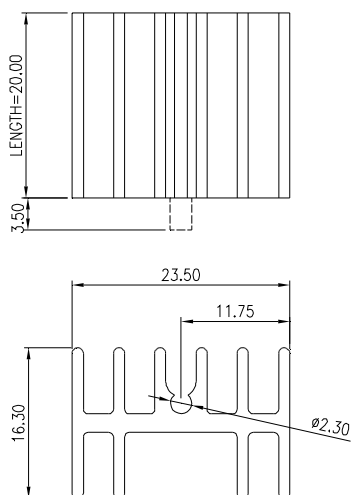
HEAT SINK HS208 SERIES



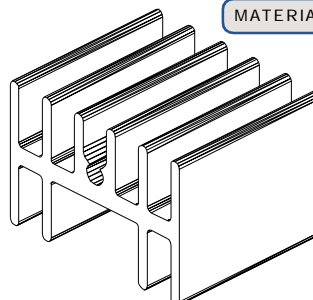
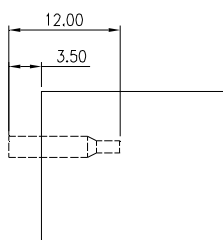
MATERIAL: ALUMINUM



HEAT SINK HS209 SERIES

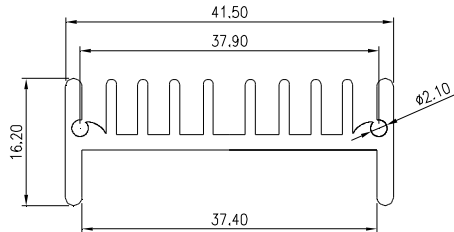
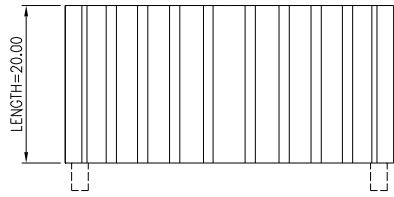


MATERIAL: ALUMINUM



NOTE : SOME SIZES, STYLES AND OPTION ARE NON-STANDARD, NON-CANCELLABLE, NON-RETURNABLE

HEAT SINK HS210 SERIES

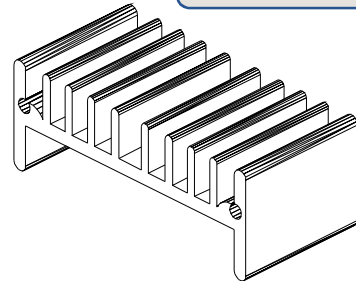
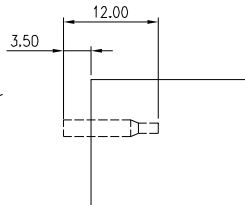


HS
HEAT SINK
SERIES NO.
210

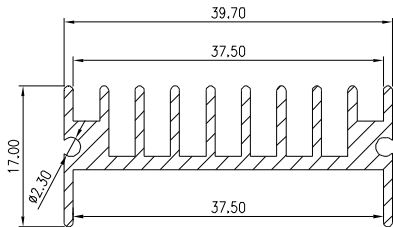
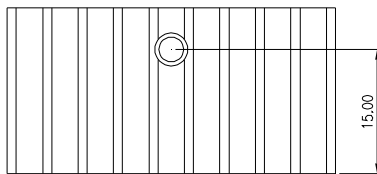
20
LENGTH
20mm

X
PEG OPTION
BLANK: WITHOUT PEG
P: WITH PEG

MATERIAL: ALUMINUM



HEAT SINK HS211 SERIES

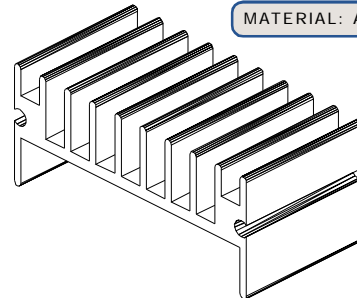
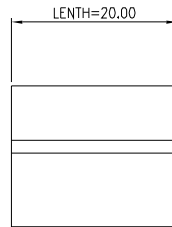


HS
HEAT SINK
SERIES NO.
211

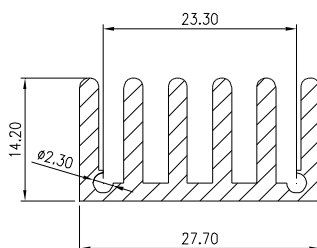
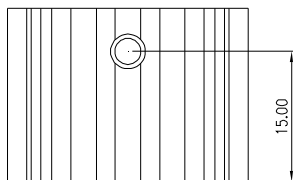
20
LENGTH
20mm

X
PEG OPTION
BLANK: WITHOUT PEG
P: WITH PEG

MATERIAL: ALUMINUM



HEAT SINK HS212 SERIES

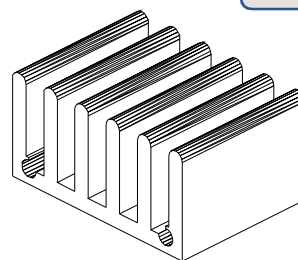
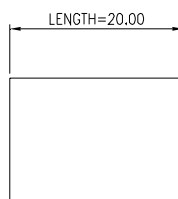


HS
HEAT SINK
SERIES NO.
212

20
LENGTH
20mm

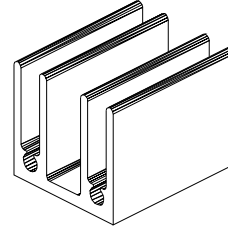
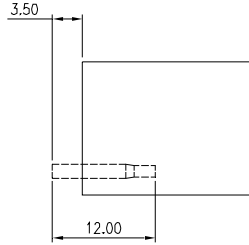
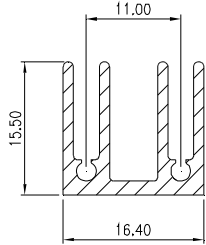
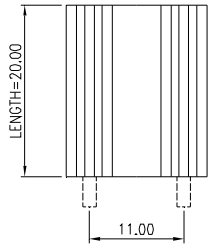
X
PEG OPTION
BLANK: WITHOUT PEG
P: WITH PEG

MATERIAL: ALUMINUM



NOTE : SOME SIZES, STYLES AND OPTION ARE NON-STANDARD, NON-CANCELLABLE, NON-RETURNABLE

HEAT SINK HS213 SERIES



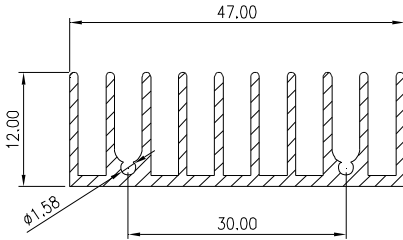
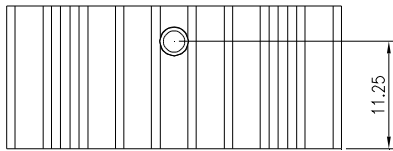
HS
HEAT SINK
213
SERIES NO.
213

20
LENGTH
20mm

X
PEG OPTION
BLANK: WITHOUT PEG
P: WITH PEG

MATERIAL: ALUMINUM

HEAT SINK HS214 SERIES

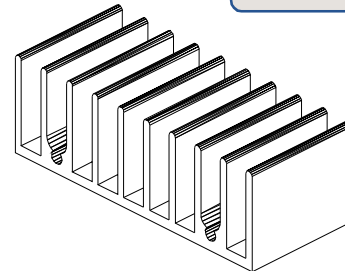
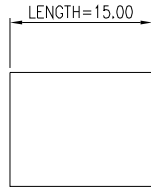


HS
HEAT SINK
214
SERIES NO.
214

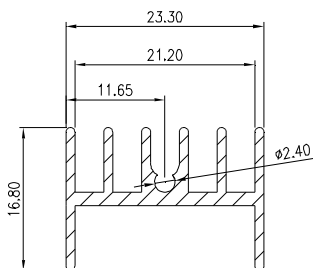
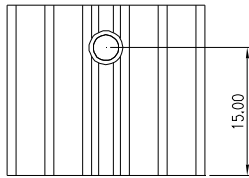
15
LENGTH
15mm

X
PEG OPTION
BLANK: WITHOUT PEG
P: WITH PEG

MATERIAL: ALUMINUM



HEAT SINK HS215 SERIES

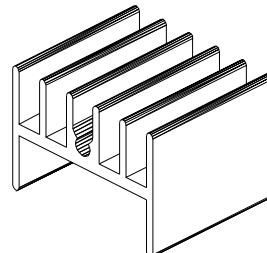
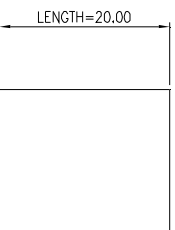


HS
HEAT SINK
215
SERIES NO.
215

20
LENGTH
20mm

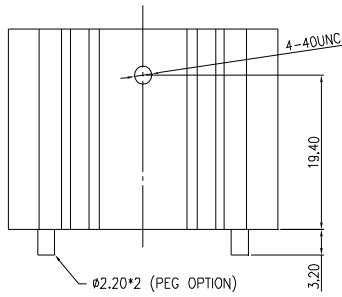
X
PEG OPTION
BLANK: WITHOUT PEG
P: WITH PEG

MATERIAL: ALUMINUM



NOTE : SOME SIZES, STYLES AND OPTION ARE NON-STANDARD, NON-CANCELLABLE, NON-RETURNABLE

HEAT SINK HS216 SERIES



HS
HEAT SINK

216

SERIES NO.
216

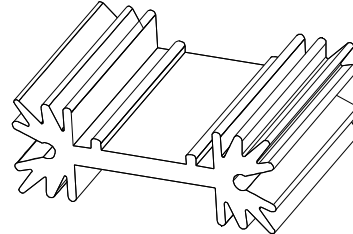
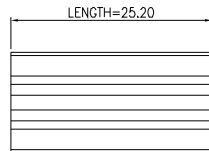
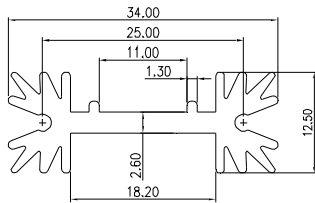
25.2

LENGTH
25.2mm

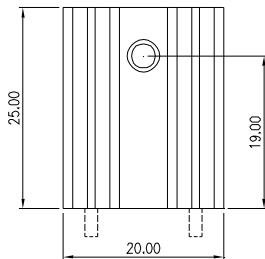
X

PEG OPTION
BLANK: WITHOUT PEG
P: WITH PEG

MATERIAL: ALUMINUM



HEAT SINK HS217 SERIES



HS
HEAT SINK

217

SERIES NO.
217

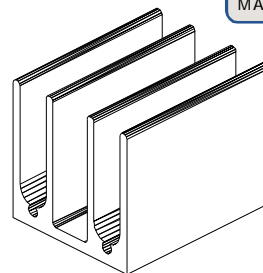
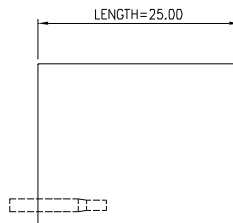
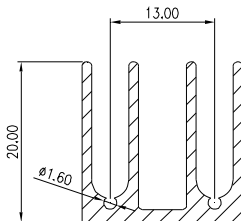
25

LENGTH
25mm

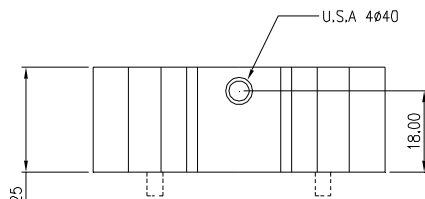
X

PEG OPTION
BLANK: WITHOUT PEG
P: WITH PEG

MATERIAL: ALUMINUM



HEAT SINK HS221 SERIES



HS
HEAT SINK

221

SERIES NO.
221

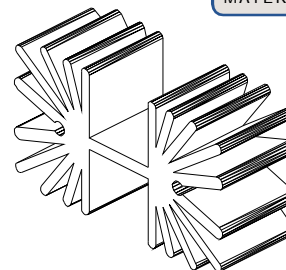
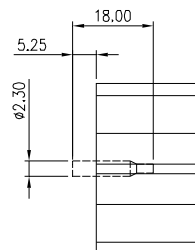
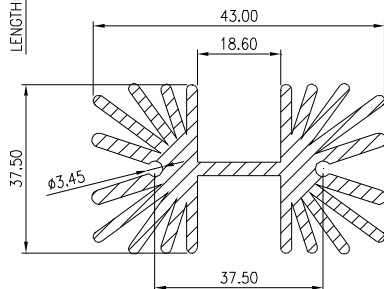
23.2

LENGTH
23.2mm

X

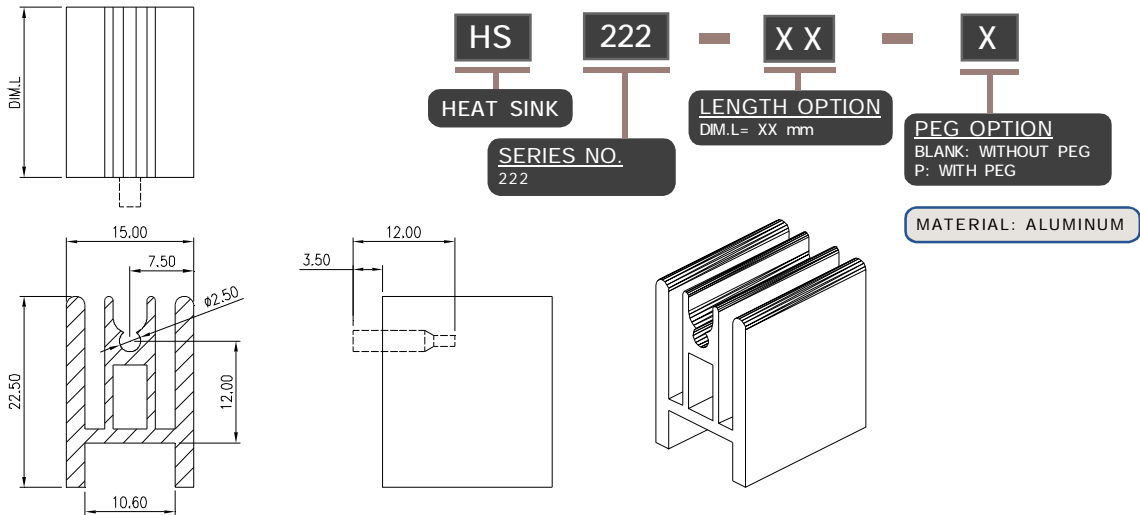
PEG OPTION
BLANK: WITHOUT PEG
P: WITH PEG

MATERIAL: ALUMINUM

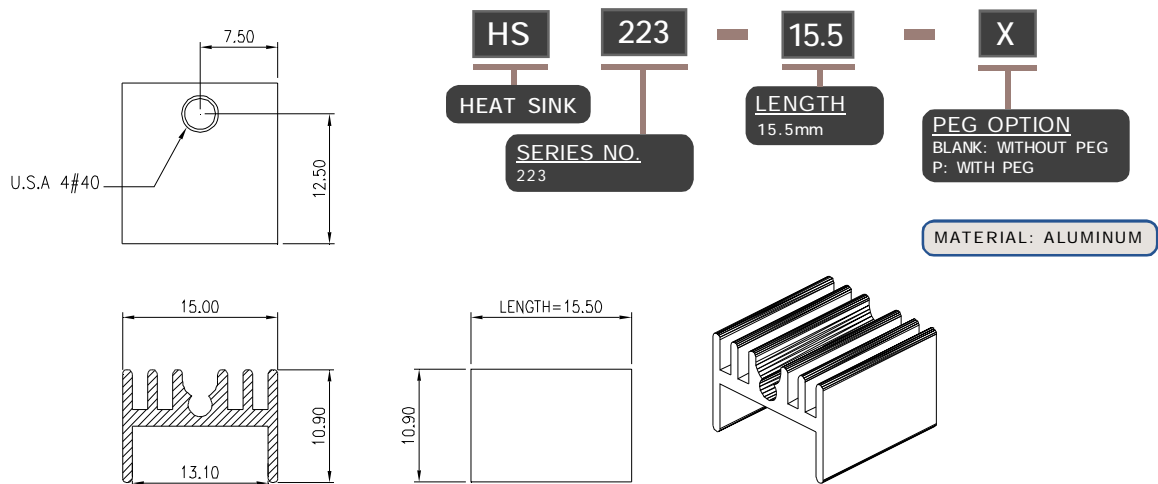


NOTE : SOME SIZES, STYLES AND OPTION ARE NON-STANDARD, NON-CANCELLABLE, NON-RETURNABLE

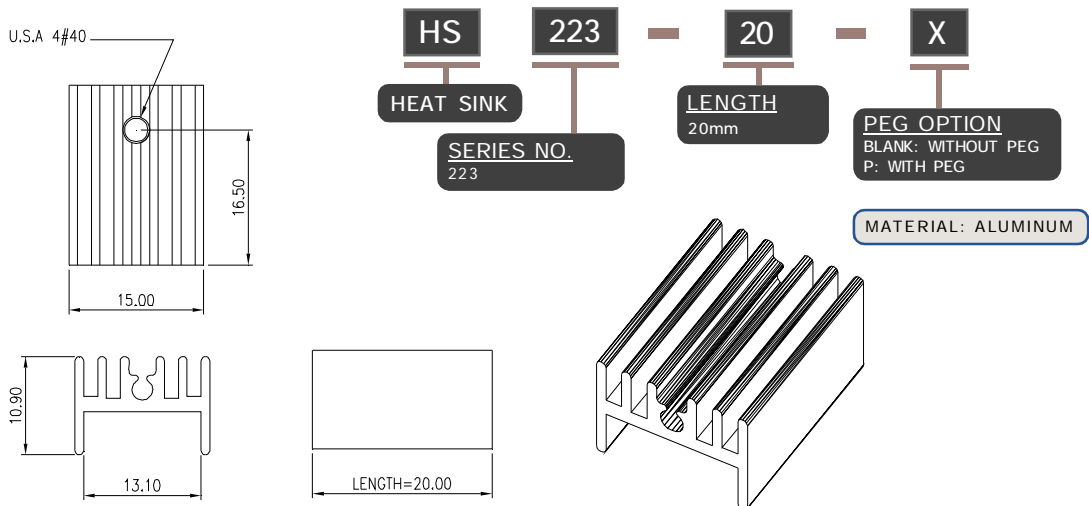
HEAT SINK HS222 SERIES



HEAT SINK HS223 SERIES

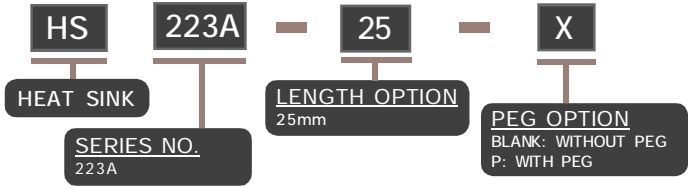
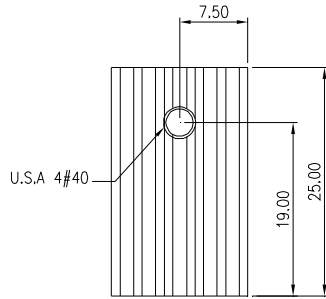


HEAT SINK HS223 SERIES

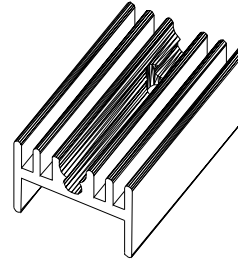
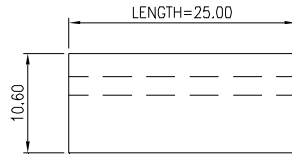
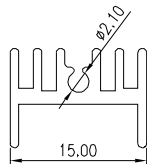


NOTE : SOME SIZES, STYLES AND OPTION ARE NON-STANDARD, NON-CANCELLABLE, NON-RETURNABLE

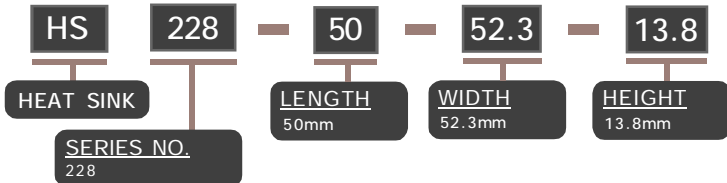
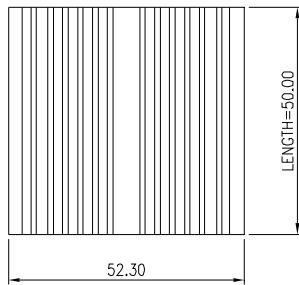
HEAT SINK HS223A SERIES



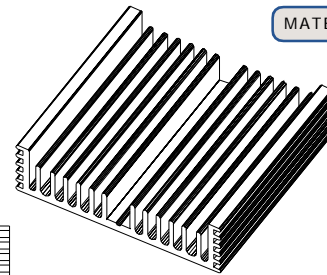
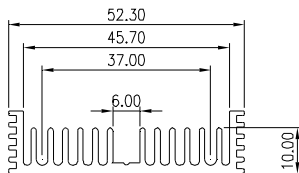
MATERIAL: ALUMINUM



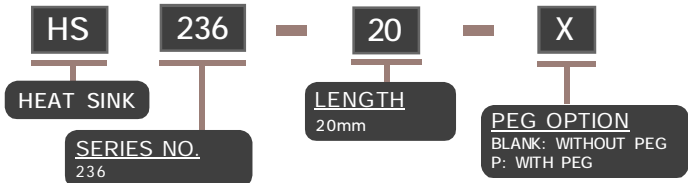
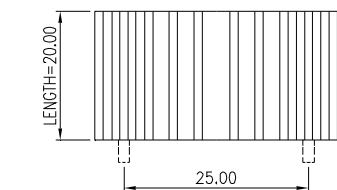
HEAT SINK HS228 SERIES



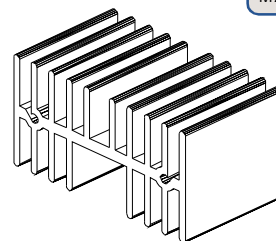
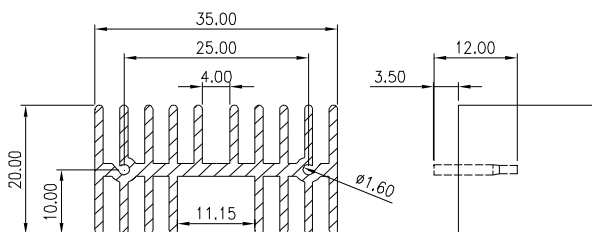
MATERIAL: ALUMINUM



HEAT SINK HS236 SERIES

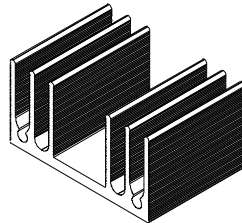
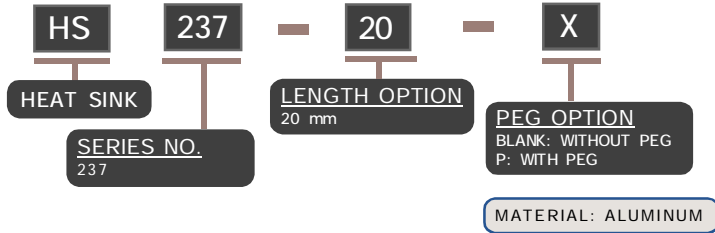
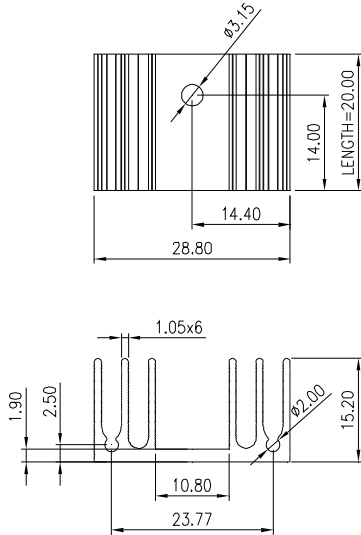


MATERIAL: ALUMINUM

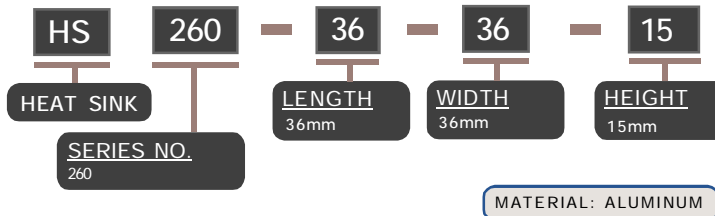
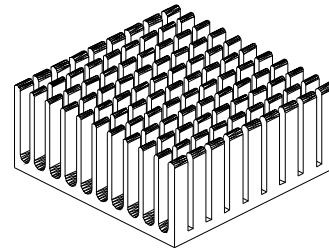
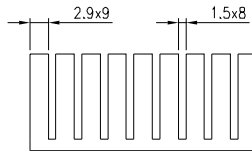
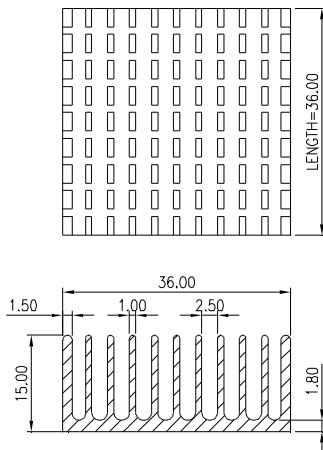


NOTE : SOME SIZES, STYLES AND OPTION ARE NON-STANDARD, NON-CANCELLABLE, NON-RETURNABLE

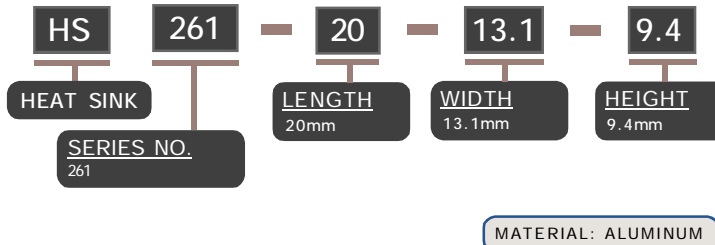
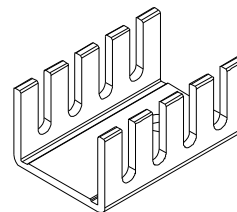
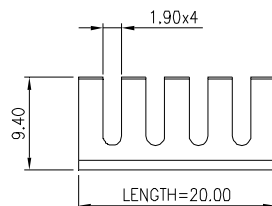
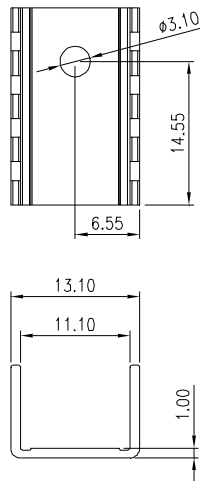
HEAT SINK HS237 SERIES



HEAT SINK HS260 SERIES

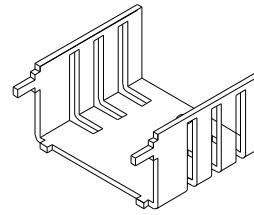
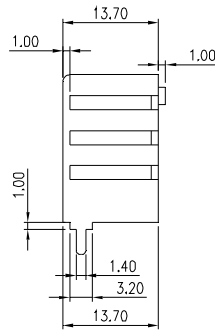
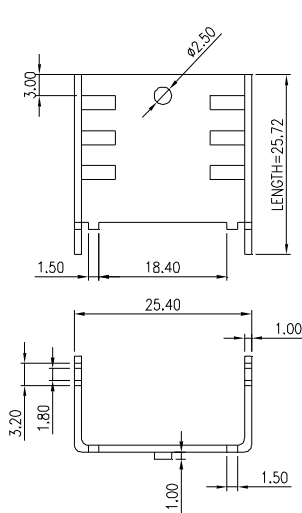


HEAT SINK HS261 SERIES

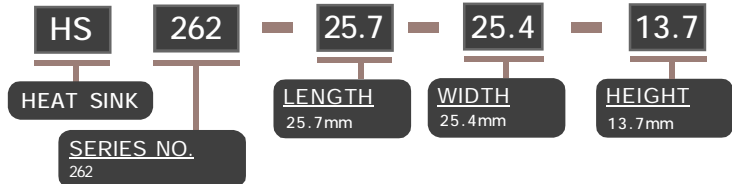


NOTE : SOME SIZES, STYLES AND OPTION ARE NON-STANDARD, NON-CANCELLABLE, NON-RETURNABLE

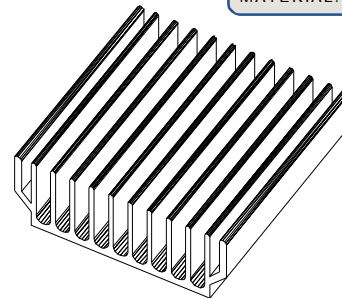
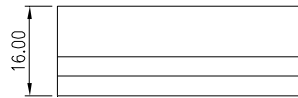
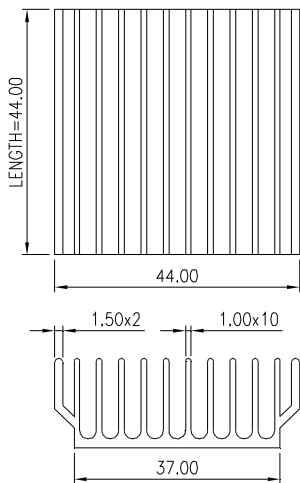
HEAT SINK HS262 SERIES



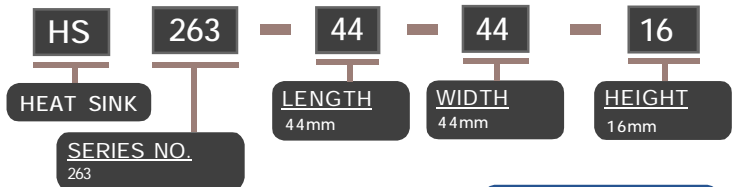
MATERIAL: ALUMINUM



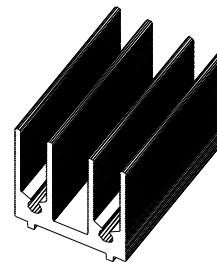
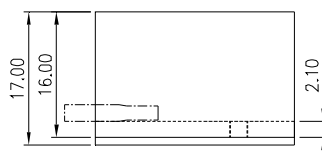
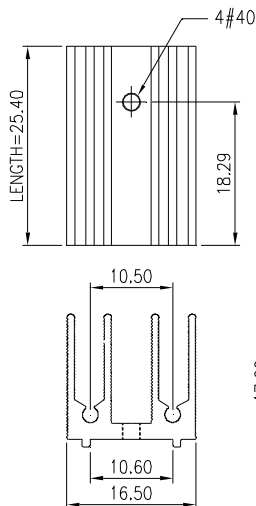
HEAT SINK HS263 SERIES



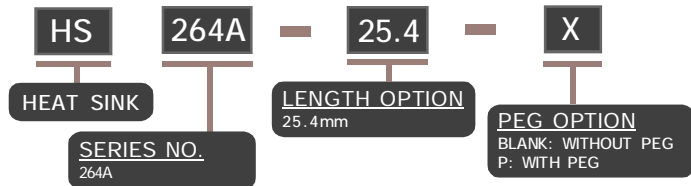
MATERIAL: ALUMINUM



HEAT SINK HS264A SERIES

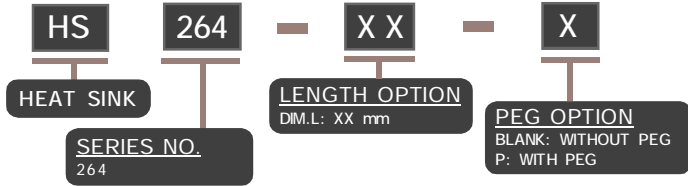
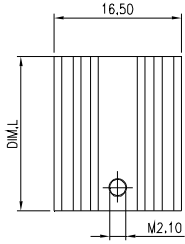


MATERIAL: ALUMINUM

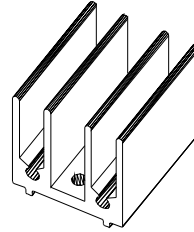
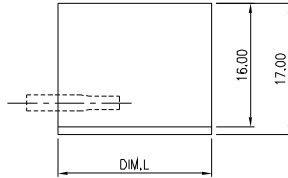
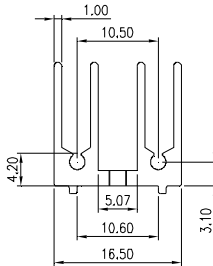


NOTE : SOME SIZES, STYLES AND OPTION ARE NON-STANDARD, NON-CANCELLABLE, NON-RETURNABLE

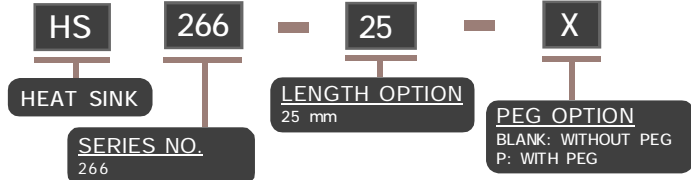
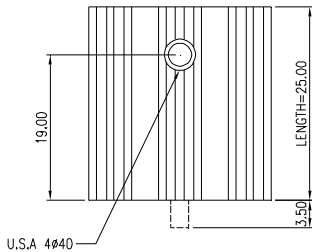
HEAT SINK HS264 SERIES



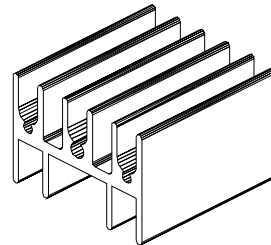
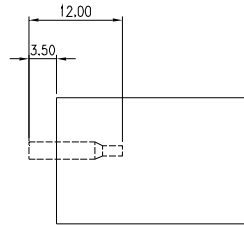
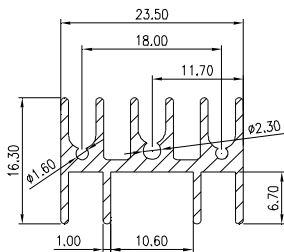
MATERIAL: ALUMINUM



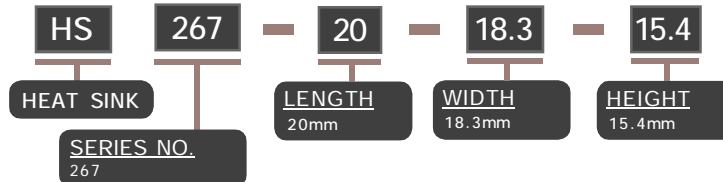
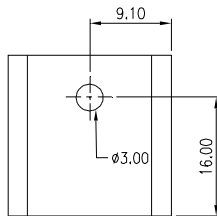
HEAT SINK HS266 SERIES



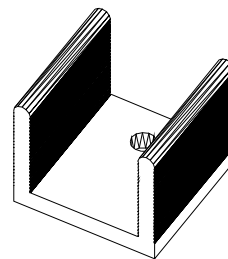
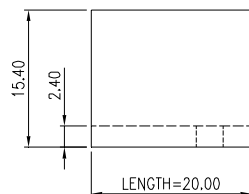
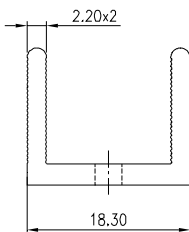
MATERIAL: ALUMINUM



HEAT SINK HS267 SERIES

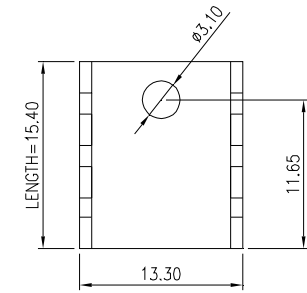


MATERIAL: ALUMINUM



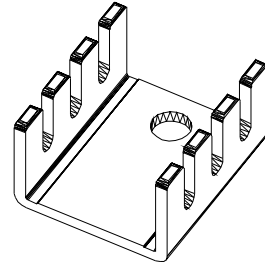
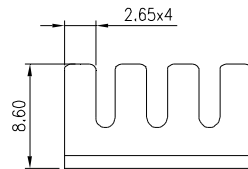
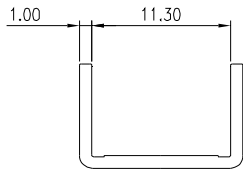
NOTE : SOME SIZES, STYLES AND OPTION ARE NON-STANDARD, NON-CANCELLABLE, NON-RETURNABLE

HEAT SINK HS268 SERIES

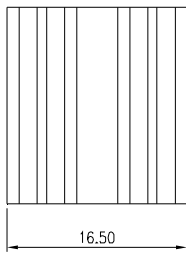


HS	268	15.4	13.3	8.6
HEAT SINK	SERIES NO. 268	LENGTH 15.4mm	WIDTH 13.3mm	HEIGHT 8.6mm

MATERIAL: ALUMINUM

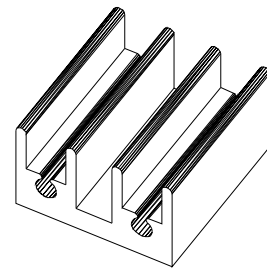
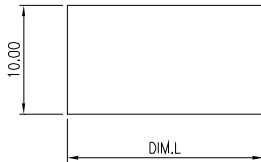
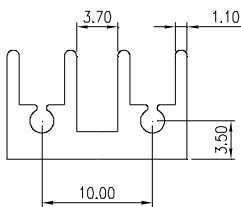


HEAT SINK HS269 SERIES

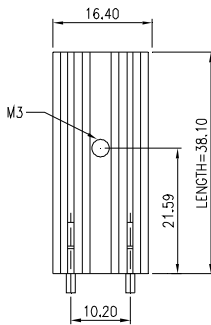


HS	269	XX	16.5	10
HEAT SINK	SERIES NO. 269	LENGTH OPTION DIM.L: XXmm	WIDTH 16.5mm	HEIGHT 10mm

MATERIAL: ALUMINUM

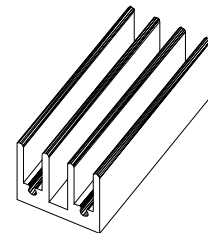
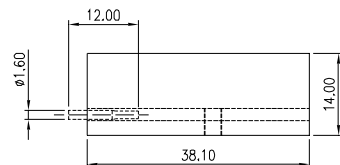
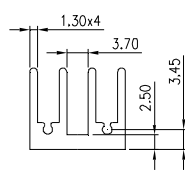


HEAT SINK HS272 SERIES



HS	272	38.1	X
HEAT SINK	SERIES NO. 272	LENGTH 38.1mm	PEG OPTION BLANK: WITHOUT PEG P: WITH PEG

MATERIAL: ALUMINUM



NOTE : SOME SIZES, STYLES AND OPTION ARE NON-STANDARD, NON-CANCELLABLE, NON-RETURNABLE

HEAT SINK HS274 SERIES

HS	274	25	25	5.1
HEAT SINK	SERIES NO. 274	LENGTH 25mm	WIDTH 25mm	HEIGHT 5.1mm

MATERIAL: ALUMINUM

HEAT SINK HS275 SERIES

HS	275	28	27.9	8
HEAT SINK	SERIES NO. 275	LENGTH 28mm	WIDTH 27.9mm	HEIGHT 8mm

MATERIAL: ALUMINUM

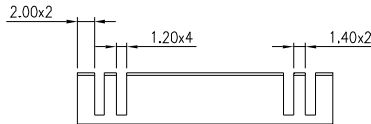
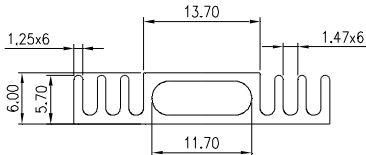
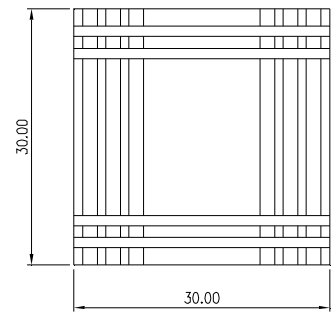
HEAT SINK HS291B SERIES

HS	291B	25	13.6	10.7
HEAT SINK	SERIES NO. 291B	LENGTH 25mm	WIDTH 13.6mm	HEIGHT 10.7mm

MATERIAL: ALUMINUM

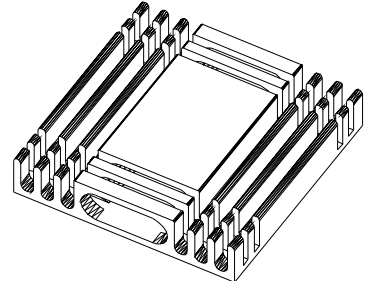
NOTE : SOME SIZES, STYLES AND OPTION ARE NON-STANDARD, NON-CANCELLABLE, NON-RETURNABLE

HEAT SINK HS296 SERIES

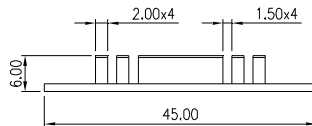
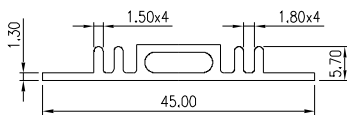
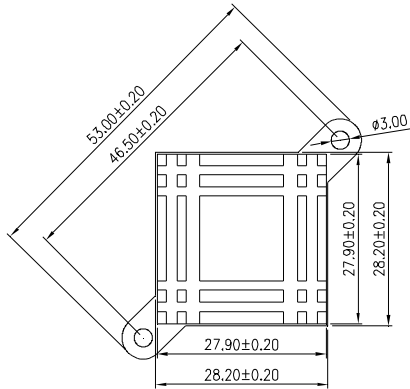


HS	296	30	30	6
HEAT SINK	SERIES NO. 296	LENGTH 30mm	WIDTH 30mm	HEIGHT 6mm

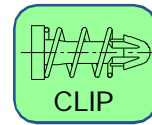
MATERIAL: ALUMINUM



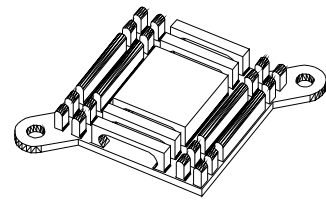
HEAT SINK HS298 SERIES WITH CLIP



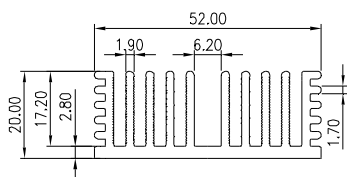
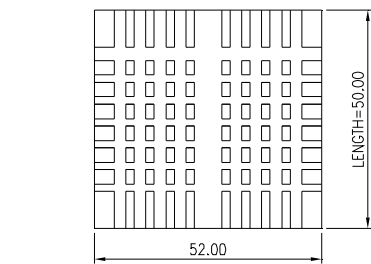
HS	298	27.9	27.9	5.7
HEAT SINK	SERIES NO. 298	LENGTH 27.9mm	WIDTH 27.9mm	HEIGHT 5.7mm



MATERIAL: ALUMINUM

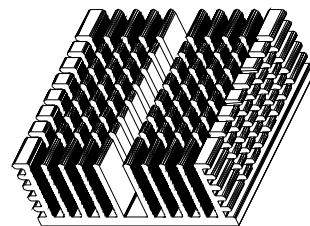


HEAT SINK HS300 SERIES



HS	300	50	52	20
HEAT SINK	SERIES NO. 300	LENGTH 50mm	WIDTH 52mm	HEIGHT 20mm

MATERIAL: ALUMINUM



NOTE : SOME SIZES, STYLES AND OPTION ARE NON-STANDARD, NON-CANCELLABLE, NON-RETURNABLE