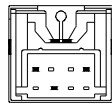
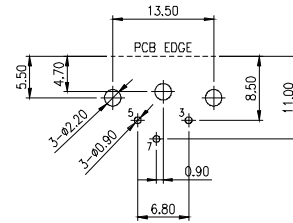
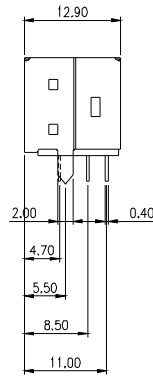
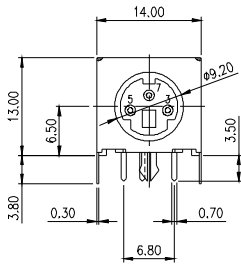


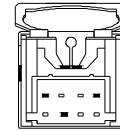
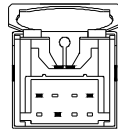
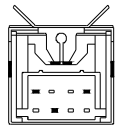
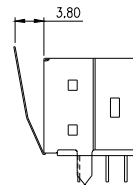
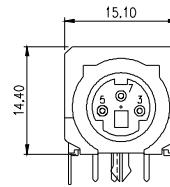
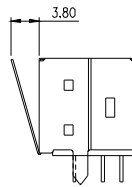
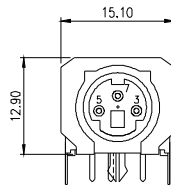
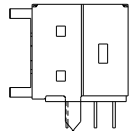
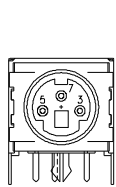
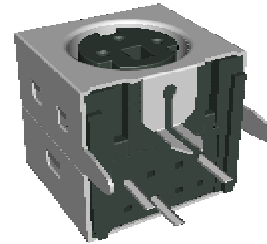
MMI

- MD -
MINI DIN JACK (1)

MINI DIN JACK - RIGHT ANGLE TYPE - Pa



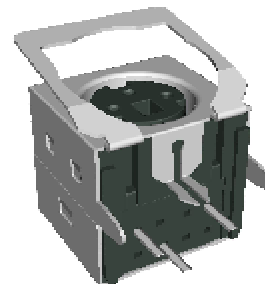
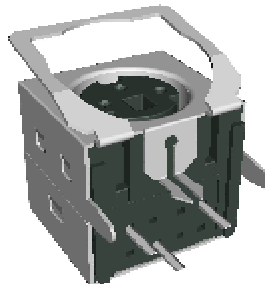
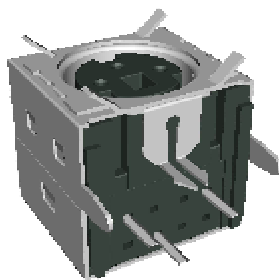
STANDARD TYPE
3 OF CONTACTS



WITH GROUNDING FINGER

WITH LOW PROFILE GROUNDING SPRING

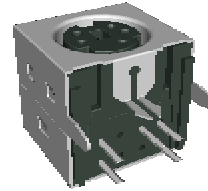
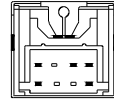
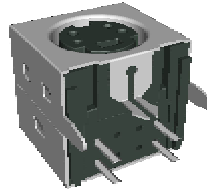
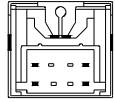
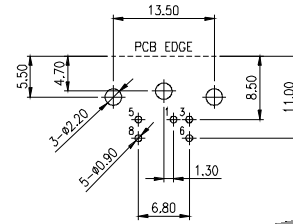
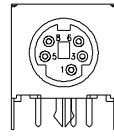
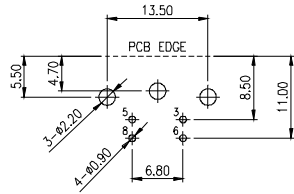
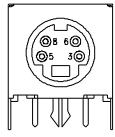
WITH GROUNDING SPRING



MD	000	Pa	XX	T	Gft	XX	X
MINI DIN JACK	SERIES NO.	PCB TYPE Pa: RIGHT ANGLE TYPE	NO. OF CONTACTS 03, 04, 05, 06, 07, 08, 09, 10	SHELL PLATING T: TIN PLATING	CONTACT PLATING OPTION Gft: GOLD FLASH ON CONTACT, TIN PLATING ON SOLDER TAIL	COLOR OF PLASTIC (ONLY FOR MD000-Pa06TGft) BLANK: BLACK 06: GREEN 07: PURPLE	SPECIAL OPTION BLANK: STANDARD TYPE S: WITH GROUNDING SPRING S1: WITH LOW PROFILE GROUNDING SPRING F: WITH GROUNDING FINGER

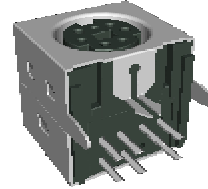
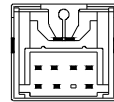
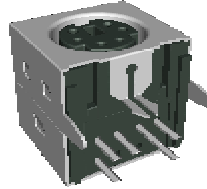
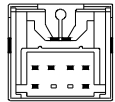
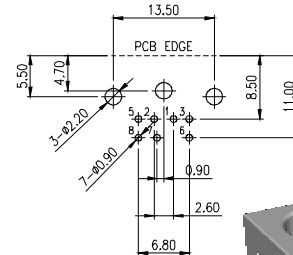
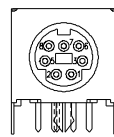
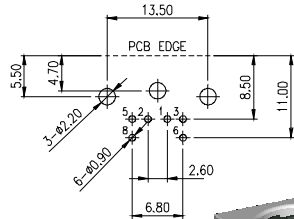
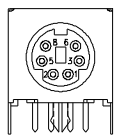
NOTE : SOME SIZES, STYLES AND OPTION ARE NON-STANDARD, NON-CANCELLABLE, NON-RETURNABLE

MINI DIN JACK - RIGHT ANGLE TYPE - Pa



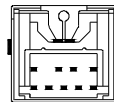
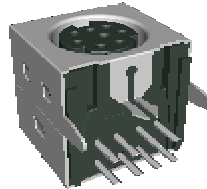
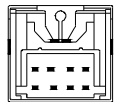
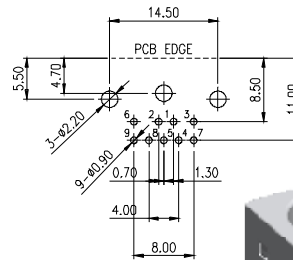
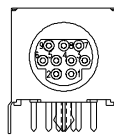
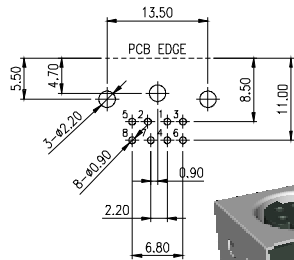
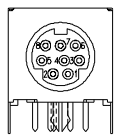
4 OF CONTACTS

5 OF CONTACTS



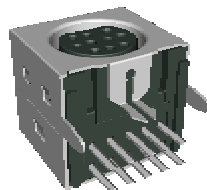
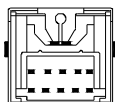
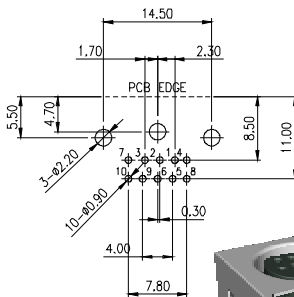
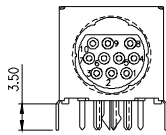
6 OF CONTACTS

7 OF CONTACTS



8 OF CONTACTS

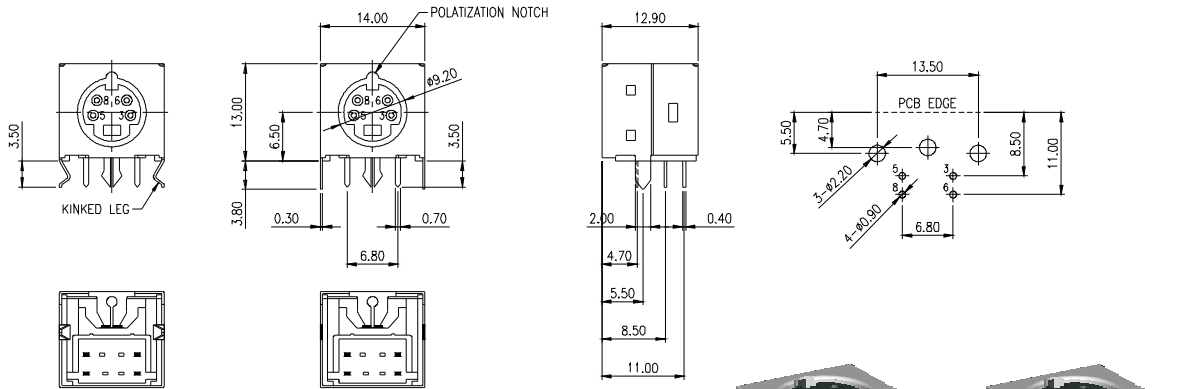
9 OF CONTACTS



10 OF CONTACTS

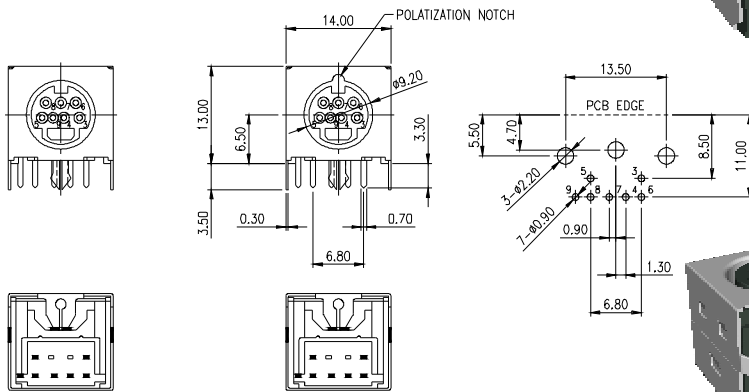
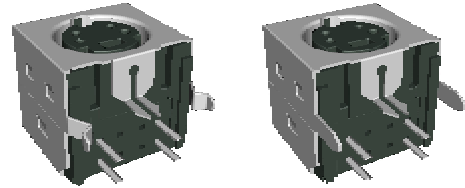
NOTE : SOME SIZES, STYLES AND OPTION ARE NON-STANDARD, NON-CANCELLABLE, NON-RETURNABLE

MINI DIN JACK - RIGHT ANGLE TYPE - Pa



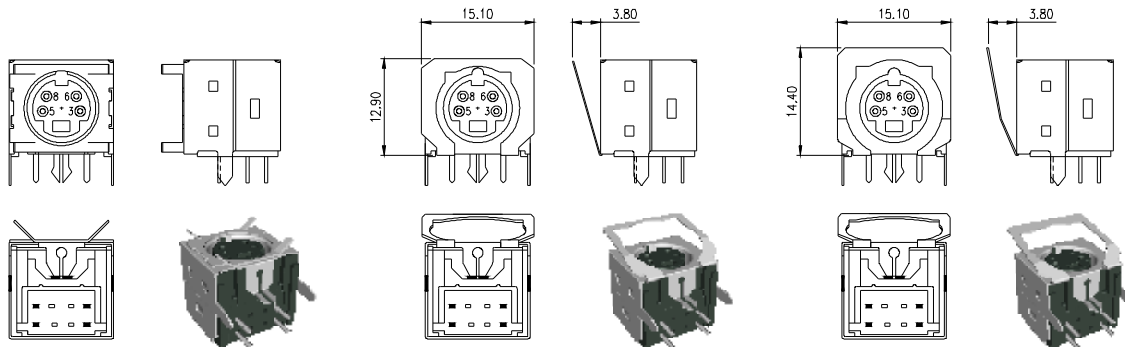
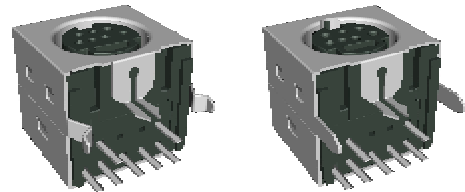
WITH KINKED LEGS
4 & 7 OF CONTACTS

STANDARD TYPE
4 OF CONTACTS



SHELL NO POLARIZATION NOTCH
ONLY FOR 7 OF CONTACTS

STANDARD TYPE
7 OF CONTACTS



WITH GROUNDING FINGER

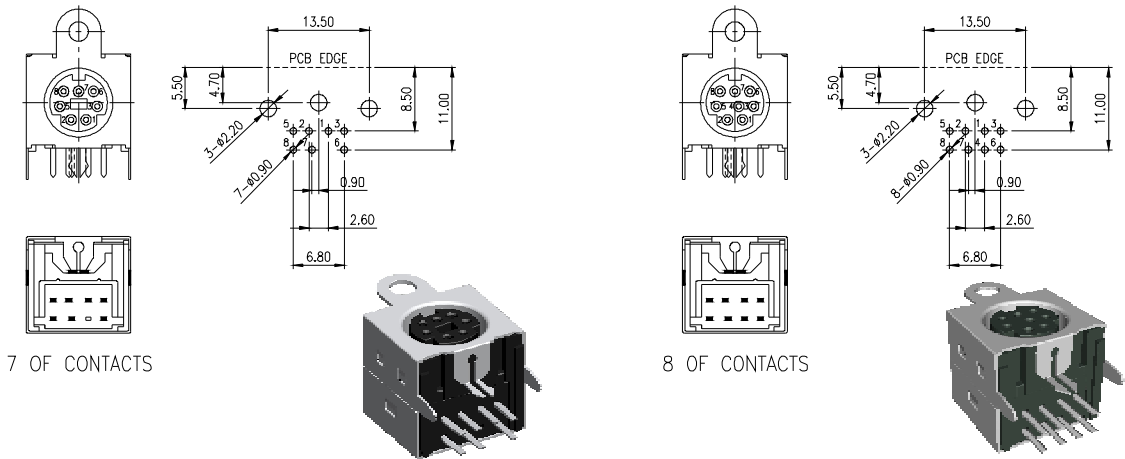
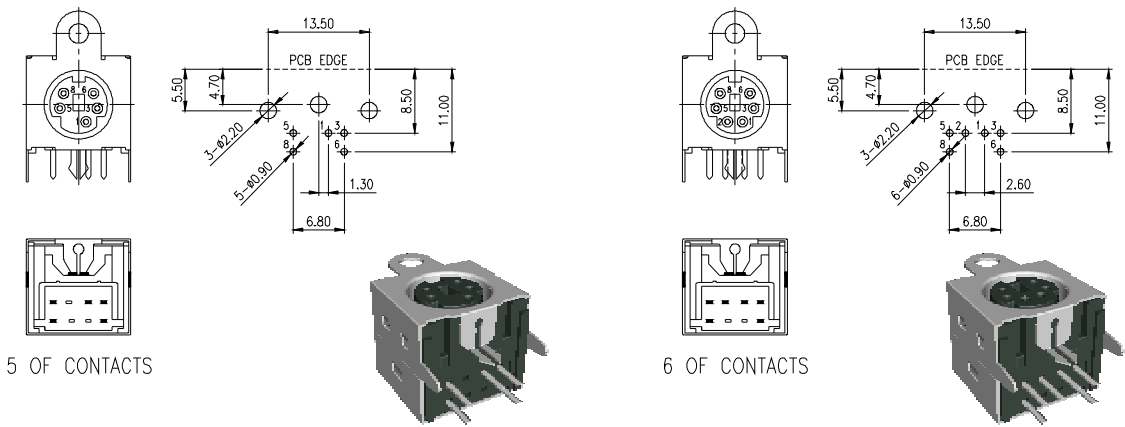
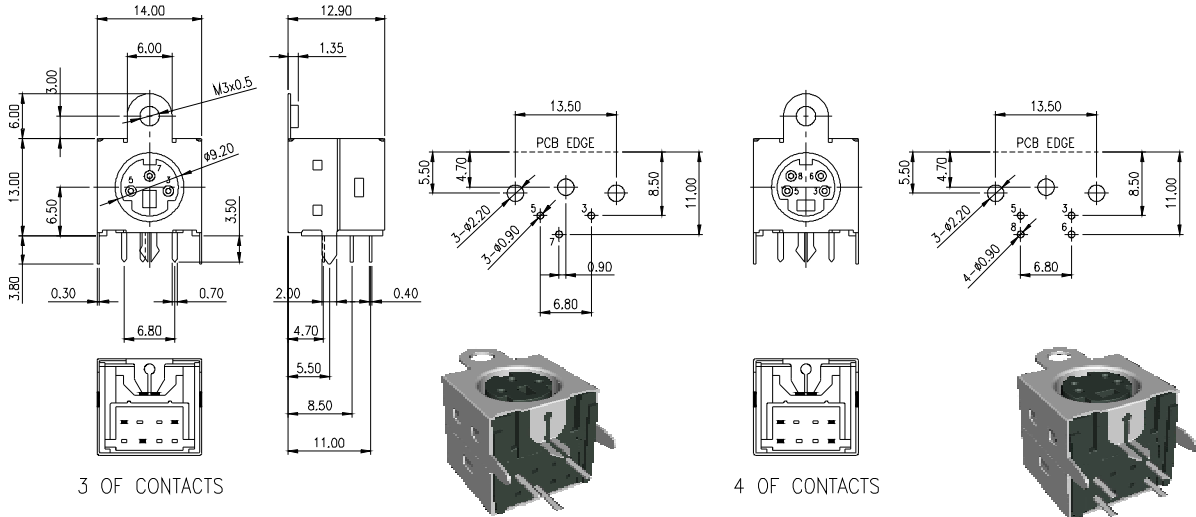
WITH LOW PROFILE GROUNDING SPRING

WITH GROUNDING SPRING

MD	001	Pa	XX	X	X	Gft	X	X
MINI DIN JACK	SERIES NO.	NO. OF CONTACTS 04, 07	SHELL PLATING OPTION T: TIN PLATED N: NICKLE PLATED	KINKED LEGS OPTION BLANK: STANDARD TYPE K: WITH KINKED LEGS	PCB TYPE Pa: RIGHT ANGLE TYPE	POLARIZATION NOTCH OPTION (ONLY FOR MD001-Pa07) BLANK: STANDARD TYPE S: SHELL NO POLATIZATION NOTCH	CONTACT PLATING OPTION Gft: GOLD FLASH ON CONTACT, TIN PLATING ON SOLDER TAIL	SPECIAL OPTION BLANK: STANDARD TYPE S: WITH GROUNDING SPRING S1: WITH LOW PROFILE GROUNDING SPRING F: WITH GROUNDING FINGER

NOTE : SOME SIZES, STYLES AND OPTION ARE NON-STANDARD, NON-CANCELLABLE, NON-RETURNABLE

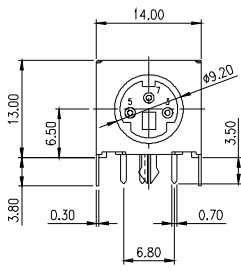
MINI DIN JACK - RIGHT ANGLE TYPE - Pa



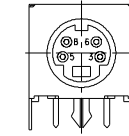
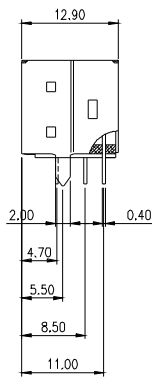
MD	002	Pa	XX	T	Gft
MINI DIN JACK	SERIES NO.	PCB TYPE Pa: RIGHT ANGLE TYPE	NO. OF CONTACTS 03, 04, 05, 06, 07, 08	SHELL PLATING T: TIN PLATING	CONTACT PLATING OPTION Gft: GOLD FLASH ON CONTACT, TIN PLATING ON SOLDER TAIL

NOTE : SOME SIZES, STYLES AND OPTION ARE NON-STANDARD, NON-CANCELLABLE, NON-RETURNABLE

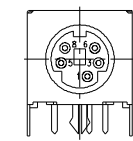
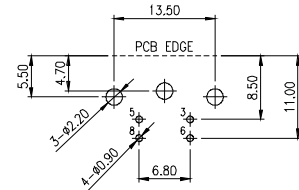
MINI DIN JACK - RIGHT ANGLE TYPE - Pa



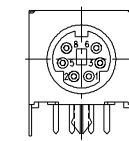
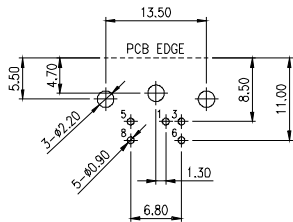
3 OF CONTACTS



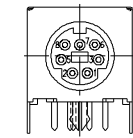
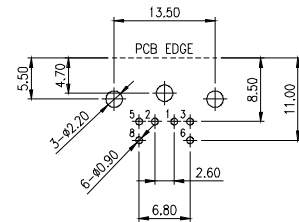
4 OF CONTACTS



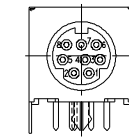
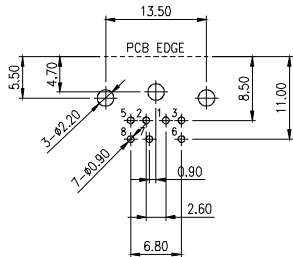
5 OF CONTACTS



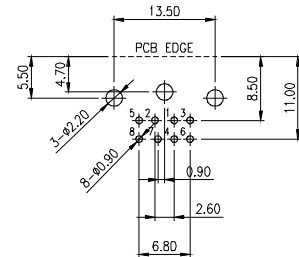
6 OF CONTACTS



7 OF CONTACTS

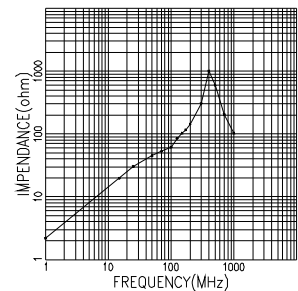


8 OF CONTACTS



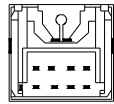
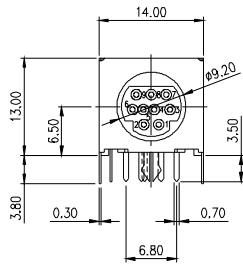
MD MINI DIN JACK
 003 SERIES NO.
 Pa PCB TYPE
 Pa: RIGHT ANGLE TYPE
 XX SHELL PLATING
 T: TIN PLATING
 T NO. OF CONTACTS
 03, 04, 05, 06, 07, 08
 Gft COLOR OF PLASTIC
 (ONLY FOR MD003-Pa06TGft)
 BLANK: BLACK
 XX CONTACT PLATING OPTION
 Gft: GOLD FLASH ON CONTACT,
 TIN PLATING ON SOLDER TAIL

TESTER: HP4191A/880526					
COIL SPEC: 0.65mm DIA.X 100mm					
MEASURED DATAS					
SPECIMEN	1	2	3	4	5
FREQ.(MHz)	25	29	31	29	31
	29	31	29	31	29
	100	61	62	61	62

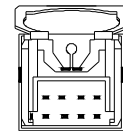
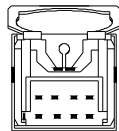
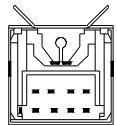
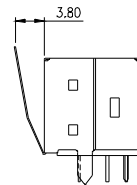
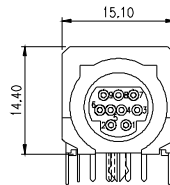
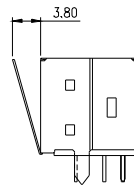
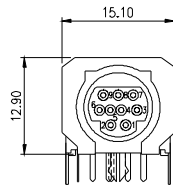
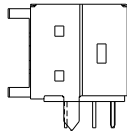
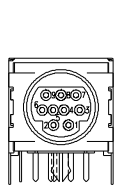
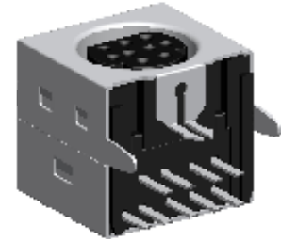
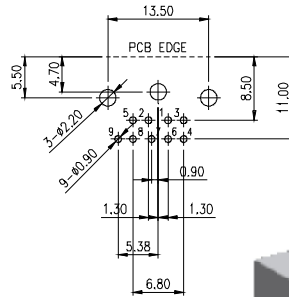
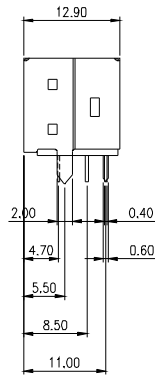


NOTE : SOME SIZES, STYLES AND OPTION ARE NON-STANDARD, NON-CANCELLABLE, NON-RETURNABLE

MINI DIN JACK - RIGHT ANGLE TYPE - Pa



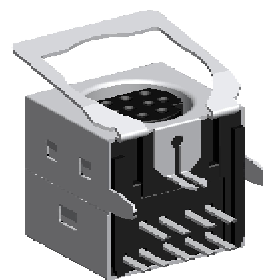
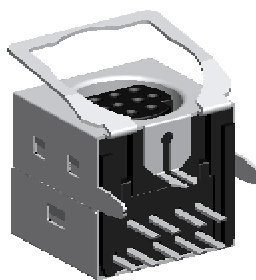
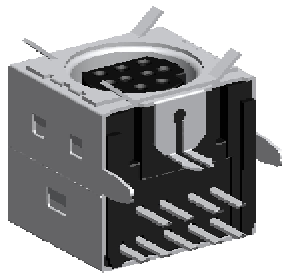
STANDARD TYPE



WITH GROUNDING FINGER

WITH LOW PROFILE GROUNDING SPRING

WITH GROUNDING SPRING



MD

004

Pa

09

T

Gft

X

MINI DIN JACK

SERIES NO.

PCB TYPE
Pa: RIGHT ANGLE TYPE

NO. OF CONTACTS

SHELL PLATING
T: TIN PLATING

CONTACT PLATING OPTION
Gft: GOLD FLASH ON CONTACT,
TIN PLATING ON SOLDER TAIL

SPECIAL OPTION
BLANK: STANDARD TYPE
S: WITH GROUNDING SPRING
S1: WITH LOW PROFILE GROUNDING SPRING
F: WITH GROUNDING FINGER

NOTE : SOME SIZES, STYLES AND OPTION ARE NON-STANDARD, NON-CANCELLABLE, NON-RETURNABLE

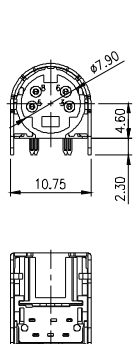
www.mmtmachrone.com

USA TEL : 1-510-979-2188
FAX : 1-510-979-2189

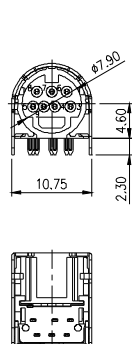
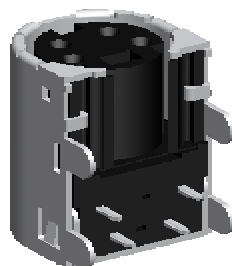
TAIWAN TEL : 886-2-2755-3193
FAX : 886-2-2784-5109

SINGAPORE TEL : 65-6274-0566
FAX : 65-6274-7891

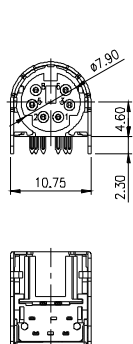
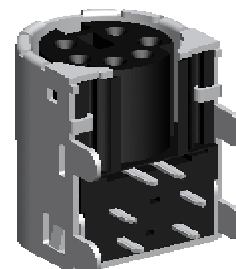
MINI DIN JACK - RIGHT ANGLE TYPE - Pa



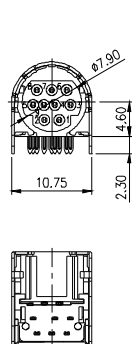
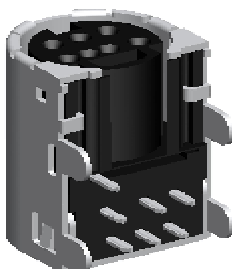
4 OF CONTACTS



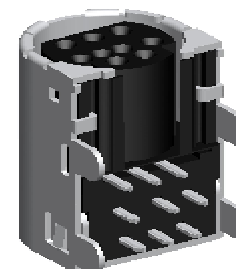
7 OF CONTACTS



6 OF CONTACTS



9 OF CONTACTS



MD

MINI DIN JACK

005

SERIES NO.

Pa

PCB TYPE
Pa: RIGHT ANGLE TYPE

XX

NO. OF CONTACTS
04, 06, 07, 09

T

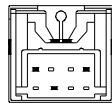
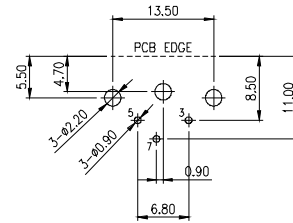
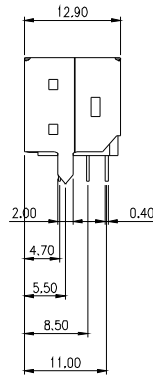
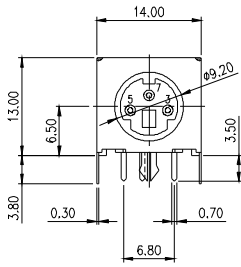
SHELL PLATING
T: TIN PLATING

Gft

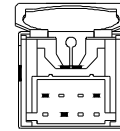
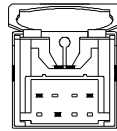
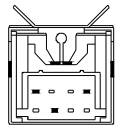
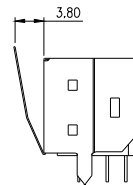
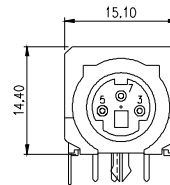
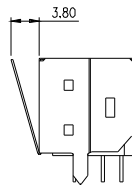
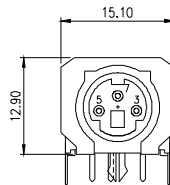
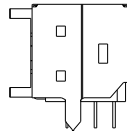
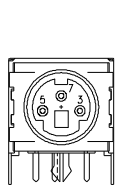
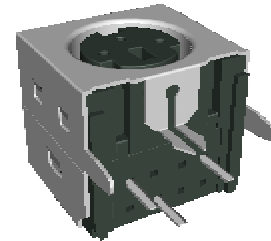
CONTACT PLATING OPTION
Gft: GOLD FLASH ON CONTACT,
TIN PLATING ON SOLDER TAIL

NOTE : SOME SIZES, STYLES AND OPTION ARE NON-STANDARD, NON-CANCELLABLE, NON-RETURNABLE

MINI DIN JACK - RIGHT ANGLE TYPE - Pa



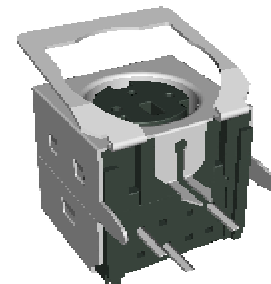
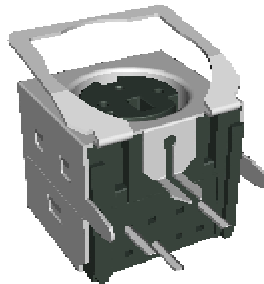
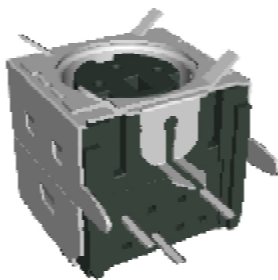
STANDARD TYPE
3 OF CONTACTS



WITH GROUNDING FINGER

WITH LOW PROFILE GROUNDING SPRING

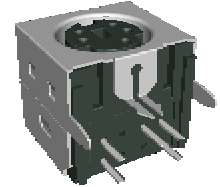
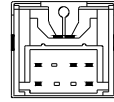
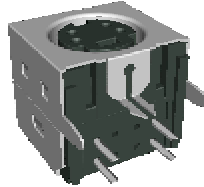
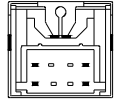
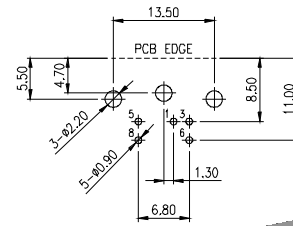
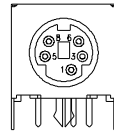
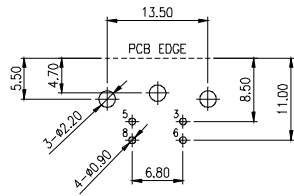
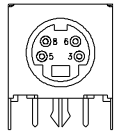
WITH GROUNDING SPRING



MD	007	Pa	XX	T	Gft	XX	X
MINI DIN JACK	SERIES NO.	PCB TYPE Pa: RIGHT ANGLE TYPE	NO. OF CONTACTS 03, 04, 05, 06, 07, 08, 09, 10	SHELL PLATING T: TIN PLATING	CONTACT PLATING OPTION Gft: GOLD FLASH ON CONTACT, TIN PLATING ON SOLDER TAIL	COLOR OF PLASTIC (ONLY FOR MD007-Pa06TGft) BLANK: BLACK 06: GREEN 07: PURPLE	SPECIAL OPTION BLANK: STANDARD TYPE S: WITH GROUNDING SPRING S1: WITH LOW PROFILE GROUNDING SPRING F: WITH GROUNDING FINGER

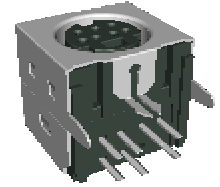
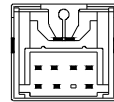
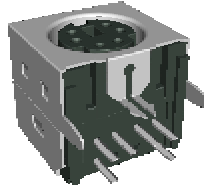
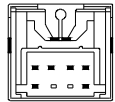
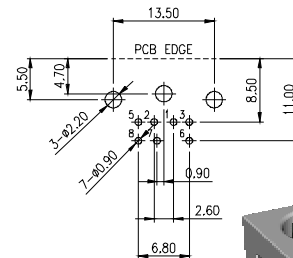
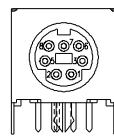
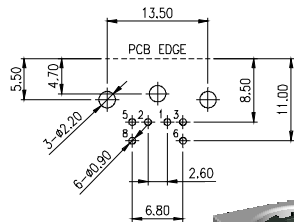
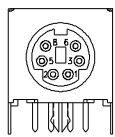
NOTE : SOME SIZES, STYLES AND OPTION ARE NON-STANDARD, NON-CANCELLABLE, NON-RETURNABLE

MINI DIN JACK - RIGHT ANGLE TYPE - Pa



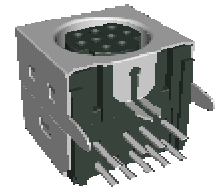
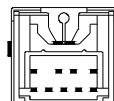
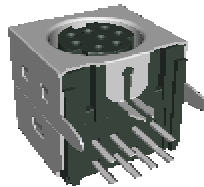
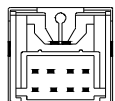
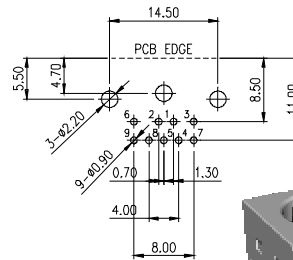
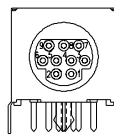
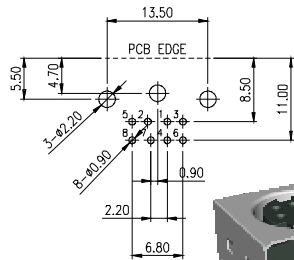
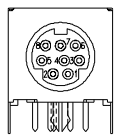
4 OF CONTACTS

5 OF CONTACTS



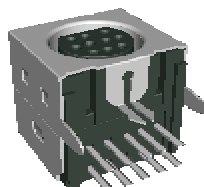
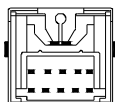
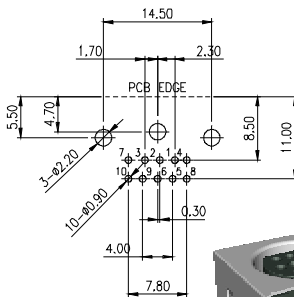
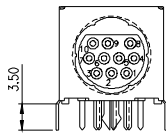
6 OF CONTACTS

7 OF CONTACTS



8 OF CONTACTS

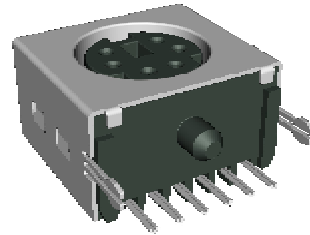
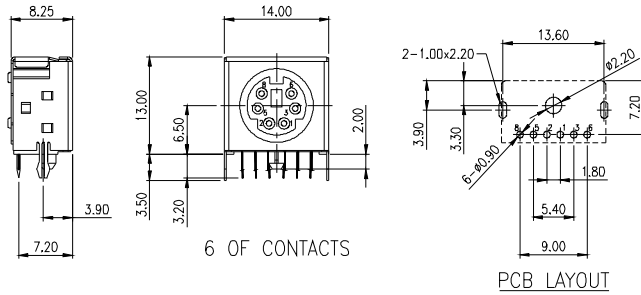
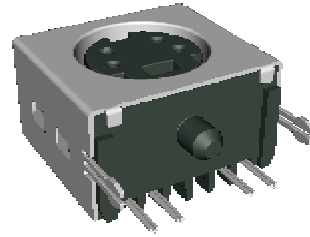
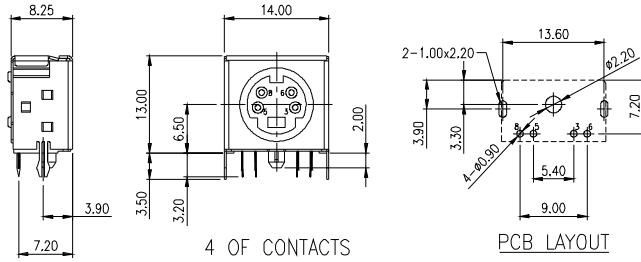
9 OF CONTACTS



10 OF CONTACTS

NOTE : SOME SIZES, STYLES AND OPTION ARE NON-STANDARD, NON-CANCELLABLE, NON-RETURNABLE

MINI DIN JACK - RIGHT ANGLE TYPE - Pa



MD

MINI DIN JACK

010

SERIES NO.

Pa

PCB TYPE
Pa: RIGHT ANGLE TYPE

XX

NO. OF CONTACTS
04, 06

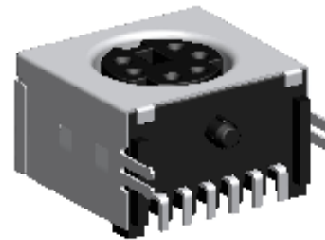
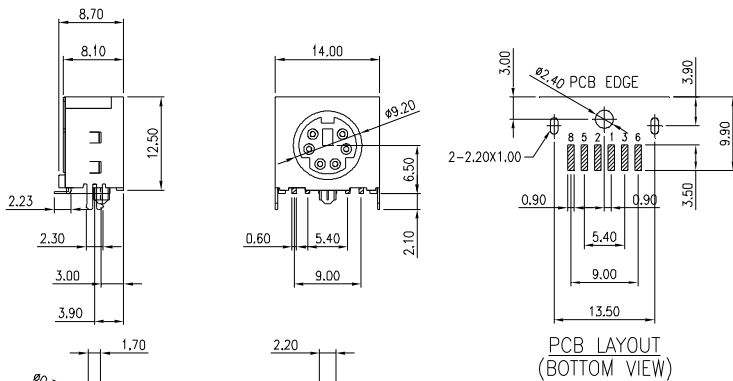
T

SHELL PLATING
T: TIN PLATING

Gft

CONTACT PLATING OPTION
Gft: GOLD FLASH ON CONTACT,
TIN PLATING ON SOLDER TAIL

MINI DIN JACK - RIGHT ANGLE SURFACE MOUNT TYPE - Rt



MD

MINI DIN JACK

010

SERIES NO.

Rt

PCB TYPE
Rt: RIGHT ANGLE
SURFACE MOUNT TYPE

04

NO. OF CONTACTS

T

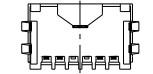
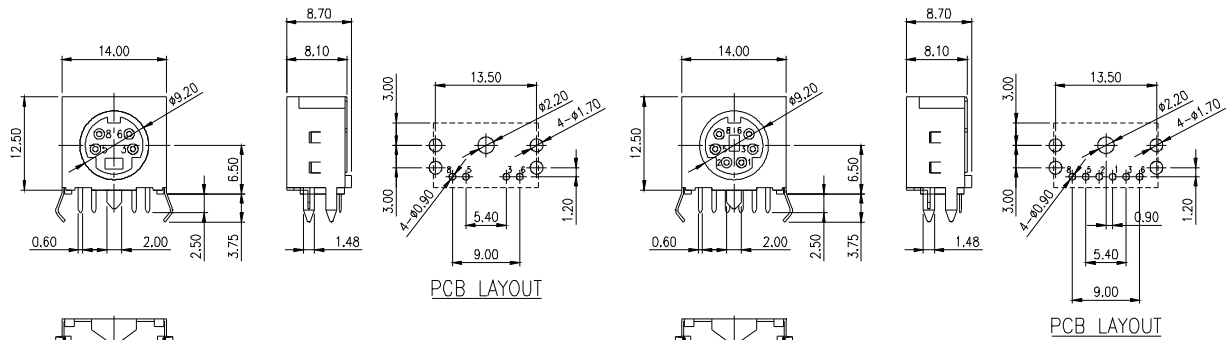
SHELL PLATING
T: TIN PLATING

Gft

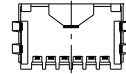
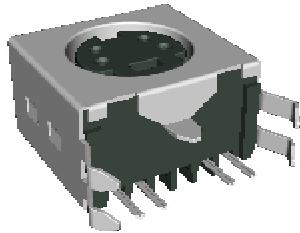
CONTACT PLATING OPTION
Gft: GOLD FLASH ON CONTACT,
TIN PLATING ON SOLDER TAIL

NOTE : SOME SIZES, STYLES AND OPTION ARE NON-STANDARD, NON-CANCELLABLE, NON-RETURNABLE

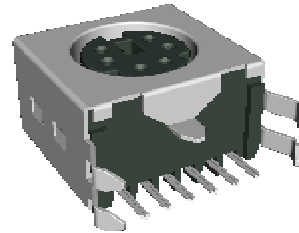
MINI DIN JACK - RIGHT ANGLE TYPE - Pa



4 OF CONTACTS



6 OF CONTACTS



MD

MINI DIN JACK

011

SERIES NO.

Pa

PCB TYPE
Pa: RIGHT ANGLE TYPE

XX

NO. OF CONTACTS
04, 06

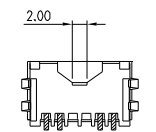
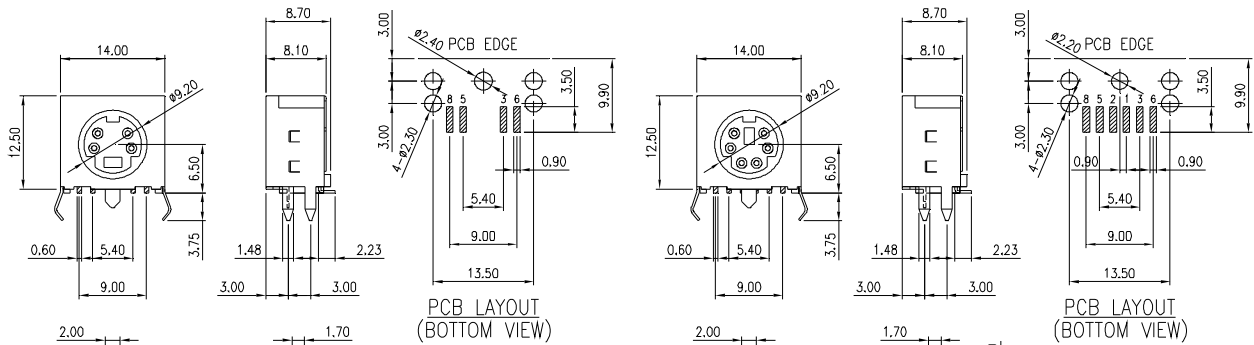
T

SHELL PLATING
T: TIN PLATING

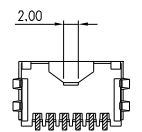
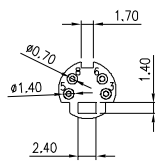
Gft

CONTACT PLATING OPTION
Gft: GOLD FLASH ON CONTACT,
TIN PLATING ON SOLDER TAIL

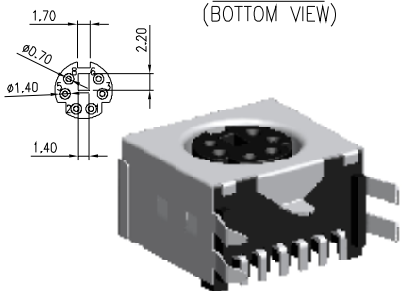
MINI DIN JACK - RIGHT ANGLE SURFACE MOUNT TYPE - Rt



4 OF CONTACTS



6 OF CONTACTS



MD

MINI DIN JACK

011

SERIES NO.

Rt

PCB TYPE
Rt: RIGHT ANGLE
SURFACE MOUNT TYPE

XX

NO. OF CONTACTS
04, 06

T

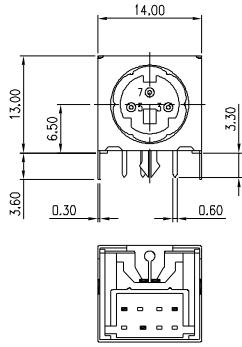
SHELL PLATING
T: TIN PLATING

Gft

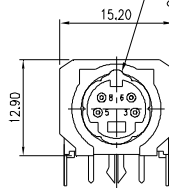
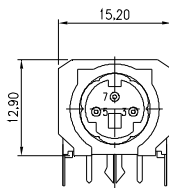
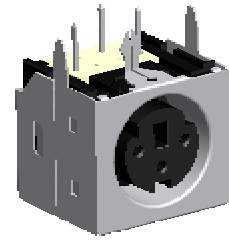
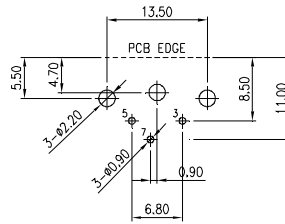
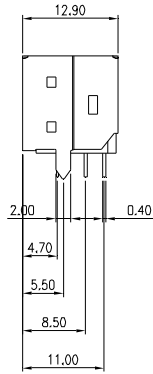
CONTACT PLATING OPTION
Gft: GOLD FLASH ON CONTACT,
TIN PLATING ON SOLDER TAIL

NOTE : SOME SIZES, STYLES AND OPTION ARE NON-STANDARD, NON-CANCELLABLE, NON-RETURNABLE

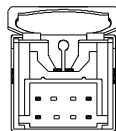
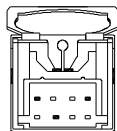
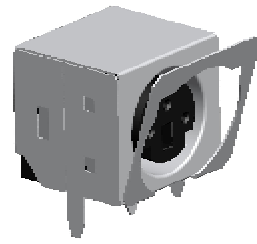
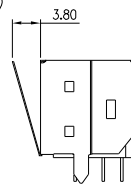
MINI DIN JACK - RIGHT ANGLE TYPE - Pa



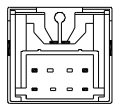
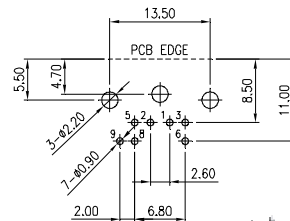
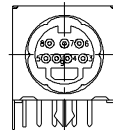
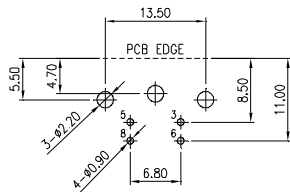
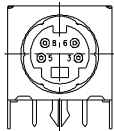
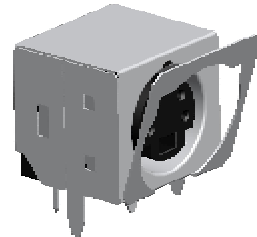
STANDARD TYPE
3 OF CONTACTS



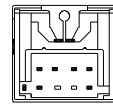
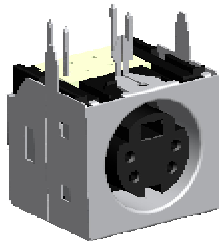
POLATIZATION NOTCH
(ONLY FOR MD017-Pa04Tgft-S1
& MD017-Pa07Tgft-S1)



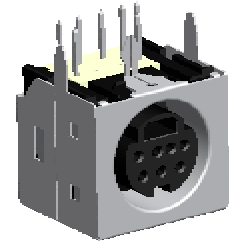
WITH LOW PORFILE GROUNDING SPRING



4 OF CONTACTS



7 OF CONTACTS



MD

MINI DIN JACK

017

SERIES NO.

Pa

PCB TYPE
Pa: RIGHT ANGLE TYPE

XX

NO. OF CONTACTS
03, 04, 07, 09, 10

T

SHELL PLATING
T: TIN PLATING

Gft

CONTACT PLATING OPTION
Gft: GOLD FLASH ON CONTACT,
TIN PLATING ON SOLDER TAIL

X

SPECIAL OPTION
BLANK: STANDARD TYPE
S1: WITH LOW PROFILE GROUNDING SPRING

NOTE : SOME SIZES, STYLES AND OPTION ARE NON-STANDARD, NON-CANCELLABLE, NON-RETURNABLE

www.mmtmachrone.com

USA TEL : 1-510-979-2188
FAX : 1-510-979-2189

TAIWAN TEL : 886-2-2755-3193
FAX : 886-2-2784-5109

SINGAPORE TEL : 65-6274-0566
FAX : 65-6274-7891