

**Omni-Directional
Antenna**

2.4 ~ 2.5 GHz 4dBi Mini Omni-Directional Antenna

MODEL NAME **MOA001-2425W-N04**

Introductions

These antennas are professionally engineered and manufactured with the highest industry quality at the lowest possible price providing extreme value. This Mesh Omni antenna is designed for the 2.4GHz ISM band and provides superb performance in IEEE 802.11b/g WiFi and Bluetooth applications. This mesh omni antenna was specifically designed for deployment with mesh Wi-Fi access points and networks. It is made of UV protective material and is fully waterproof including the integrated N plug.

Applications

- 2.4~2.5GHz ISM Band
- IEEE 802.11b, 802.11g, 802.11n Wireless LAN
- Directional and multipoint applications
- Bluetooth
- Public Wireless Hotspot
- WiFi, RFID
- Wireless Video Systems

Features

- Superior performance
- Light weight
- All weather operation
- DC Short lightning protection
- Installed for vertical
- Includes tilt and swivel mast mount

Specifications

Frequency Range	2400 ~ 2500MHz
VSWR	≤ 1.5
Antenna Type	Collinear
Gain	4dBi
Polarization	Vertical
Maximum Power	50W
Vertical Beam-with	22 °
Horizontal Beam-with	360 °
Impedance	50 ohms
Connector	N plug
Length	330mm (12.992")
Diameter	17mm (0.669")
Weight	65g
Wind Survival	>150MPH
Radome Material	White Fiberglass
Operating Temperature	-40 ~ +80°C
Mounting Pipe	17 ~ 20mm



NOTE: SOME SIZES, STYLES AND OPTIONS ARE NON-STANDARD, NON-CANCELLABLE AND NON-RETURNABLE.

2.4 ~ 2.5 GHz 6dBi Mini Omni-Directional Antenna

MODEL NAME **MOA002-2425W-N06**

Introductions

These antennas are professionally engineered and manufactured with the highest industry quality at the lowest possible price providing extreme value. This Mesh Omni antenna is designed for the 2.4GHz ISM band and provides superb performance in IEEE 802.11b/g WiFi and Bluetooth applications. This mesh omni antenna was specifically designed for deployment with mesh Wi-Fi access points and networks. It is made of UV protective material and is fully waterproof including the integrated N plug.

Applications

- 2.4~2.5GHz ISM Band
- IEEE 802.11b, 802.11g, 802.11n Wireless LAN
- Directional and multipoint applications
- Bluetooth
- Public Wireless Hotspot
- WiFi, RFID
- Wireless Video Systems

Features

- Superior performance
- Light weight
- All weather operation
- DC Short lightning protection
- Installed for vertical
- Includes tilt and swivel mast mount

Specifications

Frequency Range	2400 ~ 2500MHz
VSWR	≤ 1.5
Return Loss	≥ -12db
Antenna Type	Collinear
Gain	6dBi
Polarization	Vertical
Maximum Power	50W
Vertical Beam-with	18 °
Horizontal Beam-with	360 °
Impedance	50 ohms
Connector	N plug
Length	395mm (15.551")
Diameter	17mm (0.669")
Weight	180g
Wind Survival	>150MPH
Radome Material	White Fiberglass
Operating Temperature	-40 ~ +80°C
Mounting Pipe	17 ~ 20mm



NOTE: SOME SIZES, STYLES AND OPTIONS ARE NON-STANDARD, NON-CANCELLABLE AND NON-RETURNABLE.

2.4 ~ 2.5 GHz 8dBi Mini Omni-Directional Antenna

MODEL NAME **MOA003-2425W-N08**

Introductions

These antennas are professionally engineered and manufactured with the highest industry quality at the lowest possible price providing extreme value. This Mesh Omni antenna is designed for the 2.4GHz ISM band and provides superb performance in IEEE 802.11b/g WiFi and Bluetooth applications. This mesh omni antenna was specifically designed for deployment with mesh Wi-Fi access points and networks. It is made of UV protective material and is fully waterproof including the integrated N plug.

Applications

- 2.4~2.5GHz ISM Band
- IEEE 802.11b, 802.11g, 802.11n Wireless LAN
- Directional and multipoint applications
- Bluetooth
- Public Wireless Hotspot
- WiFi, RFID
- Wireless Video Systems

Features

- Superior performance
- Light weight
- All weather operation
- DC Short lightning protection
- Installed for vertical
- Includes tilt and swivel mast mount

Specifications

Frequency Range	2400 ~ 2500MHz
VSWR	≤ 1.5
Return Loss	≥ -12db
Antenna Type	Collinear
Gain	8dBi
Polarization	Vertical
Maximum Power	50W
Vertical Beam-with	15 °
Horizontal Beam-with	360 °
Impedance	50 ohms
Connector	N plug
Length	510mm (20.079")
Diameter	17mm (0.669")
Weight	140g
Wind Survival	>150MPH
Radome Material	White Fiberglass
Operating Temperature	-40°C ~ +80°C
Mounting Pipe	20 ~ 23mm



NOTE: SOME SIZES, STYLES AND OPTIONS ARE NON-STANDARD, NON-CANCELLABLE AND NON-RETURNABLE.

2.4 ~ 2.5 GHz 10dBi Mini Omni-Directional Antenna

MODEL NAME **MOA004-2425W-N010**

Introductions

These antennas are professionally engineered and manufactured with the highest industry quality at the lowest possible price providing extreme value. This Mesh Omni antenna is designed for the 2.4GHz ISM band and provides superb performance in IEEE 802.11b/g WiFi and Bluetooth applications. This mesh omni antenna was specifically designed for deployment with mesh Wi-Fi access points and networks. It is made of UV protective material and is fully waterproof including the integrated N plug.

Applications

- 2.4~2.5GHz ISM Band
- IEEE 802.11b, 802.11g, 802.11n Wireless LAN
- Directional and multipoint applications
- Bluetooth
- Public Wireless Hotspot
- WiFi, RFID
- Wireless Video Systems

Features

- Superior performance
- Light weight
- All weather operation
- DC Short lightning protection
- Installed for vertical
- Includes tilt and swivel mast mount

Specifications

Frequency Range	2400 ~ 2500MHz
VSWR	≤ 1.5
Return Loss	≥ -12dB
Antenna Type	Collinear
Gain	10dBi
Polarization	Vertical
Maximum Power	50W
Vertical Beam-with	12 °
Horizontal Beam-with	360 °
Impedance	50 ohms
Connector	N plug
Length	770mm (30.315")
Diameter	17mm (0.669")
Weight	140g
Wind Survival	>150MPH
Radome Material	White Fiberglass
Operating Temperature	-40 ~ +80°C
Mounting Pipe	17 ~ 20mm



NOTE: SOME SIZES, STYLES AND OPTIONS ARE NON-STANDARD, NON-CANCELLABLE AND NON-RETURNABLE.

2.4 ~ 2.5 GHz 2dBi Mini Omni-Directional Outdoor Antenna

MODEL NAME **MOA005-2425W-N02**

Introductions

These antennas are professionally engineered and manufactured with the highest industry quality at the lowest possible price providing extreme value. This Mesh Omni antenna is designed for the 2.4GHz ISM band and provides superb performance in IEEE 802.16, 802.20 Wireless LAN applications. This mesh omni antenna was specifically designed for deployment with mesh Wi-Fi access points and networks. It is made of UV protective material and is fully waterproof including the integrated N plug.

Applications

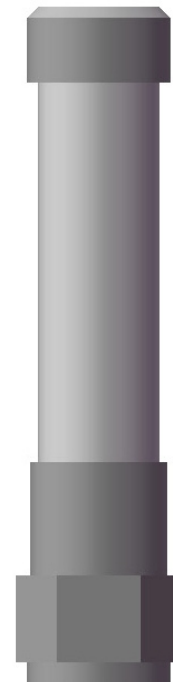
- 2.4~2.5GHz ISM Band
- IEEE 802.16, 802.20 Wireless LAN
- Directional and multipoint applications
- Public Wireless Hotspot
- Wi-Max Technology
- Wireless Video Systems

Features

- Superior performance
- The weight is light
- Good appearance designs
- DC Short lightning protection
- Support is up and down or so to adjust
- Outdoor antenna for public hot-spots
- ROHS compliant
- Waterproof grade: IP65

Specifications

Frequency Range	2400 ~ 2500MHz
VSWR	≤ 1.5
Antenna Type	Collinear
Gain	2dBi
Polarization	Vertical
Maximum Power	50W
Vertical Beam-with	80 °
Horizontal Beam-with	360 °
Impedance	50 ohms
Connector	N plug
Length	150mm (5.906")
Diameter	17mm (0.669")
Weight	50g
Wind Survival	>150MPH
Radome Material	White Fiberglass
Operating Temperature	-40 ~ +80°C
Mounting	20 ~ 23mm



NOTE: SOME SIZES, STYLES AND OPTIONS ARE NON-STANDARD, NON-CANCELLABLE AND NON-RETURNABLE.

2.4 ~ 2.5 GHz 6dBi Omni-Directional Antenna

MODEL NAME **OA001-2425W-N26**

Introductions

These antennas are professionally engineered and manufactured with the highest industry quality at the lowest possible price providing extreme value. This Omni antenna is designed for the 2.4GHz ISM band, supporting 2.4 to 2.483 GHz and provides superb performance in IEEE 802.11b/g WiFi and Bluetooth applications.

The antenna includes mounting bracket and hardware for up to 2" OD masts. Made with fiberglass and comes with an integrated N jack.

Applications

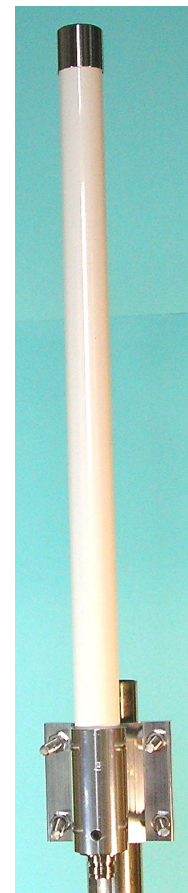
- 2.4~2.5GHz ISM Band
- IEEE 802.11b, 802.11g, 802.11n Wireless LAN
- Directional and multipoint applications
- Bluetooth
- Public Wireless Hotspot
- WiFi, RFID
- Wireless Video Systems

Features

- Superior performance
- Light weight
- All weather operation
- DC Short lightning protection
- Installed for vertical
- Includes tilt and swivel mast mount

Specifications

Frequency Range	2400 ~ 2500MHz
VSWR	≤ 1.5
Antenna Type	Collinear
Gain	6dBi
Polarization	Vertical
Maximum Power	50W
Vertical Beam-with	18 °
Horizontal Beam-with	360 °
Impedance	50 ohms
Connector	N jack
Length	460mm (18.110")
Diameter	25mm (0.984")
Weight	375g
Wind Survival	150MPH
Radome Material	White Fiberglass
Operating Temperature	-40 ~ +80°C
Clamps	U-bolt
Mounting Pipe	32 ~ 45mm



NOTE: SOME SIZES, STYLES AND OPTIONS ARE NON-STANDARD, NON-CANCELLABLE AND NON-RETURNABLE.

2.4 ~ 2.5 GHz 8dBi Omni-Directional Antenna

MODEL NAME **OA002-2425W-N28**

Introductions

These antennas are professionally engineered and manufactured with the highest industry quality at the lowest possible price providing extreme value. This Omni antenna is designed for the 2.4GHz ISM band, supporting 2.4 to 2.483 GHz and provides superb performance in IEEE 802.11b/g WiFi and Bluetooth applications.

The antenna includes mounting bracket and hardware for up to 2" OD masts. Made with fiberglass and comes with an integrated N jack.

Applications

- 2.4~2.5GHz ISM Band
- IEEE 802.11b, 802.11g, 802.11n Wireless LAN
- Directional and multipoint applications
- Bluetooth
- Public Wireless Hotspot
- WiFi, RFID
- Wireless Video Systems

Features

- Superior performance
- Light weight
- All weather operation
- DC Short lightning protection
- Installed for vertical
- Includes tilt and swivel mast mount

Specifications

Frequency Range	2400 ~ 2500MHz
VSWR	≤ 1.5
Return Loss	≥ -15db
Antenna Type	Collinear
Gain	8dBi
Polarization	Vertical
Maximum Power	50W
Vertical Beam-with	15 °
Horizontal Beam-with	360 °
Impedance	50 ohms
Connector	N jack
Length	560mm (22.047")
Diameter	25mm (0.984")
Weight	450g
Wind Survival	>150MPH
Radome Material	White Fiberglass
Operating Temperature	-40°C ~ +80°C
Clamps	U-bolt



NOTE: SOME SIZES, STYLES AND OPTIONS ARE NON-STANDARD, NON-CANCELLABLE AND NON-RETURNABLE.

2.4 ~ 2.5 GHz 10dBi Omni-Directional Antenna

MODEL NAME **OA003-2425W-N210**

Introductions

These antennas are professionally engineered and manufactured with the highest industry quality at the lowest possible price providing extreme value. This Omni antenna is designed for the 2.4GHz ISM band, supporting 2.4 to 2.483 GHz and provides superb performance in IEEE 802.11b/g WiFi and Bluetooth applications.

The antenna includes mounting bracket and hardware for up to 2" OD masts. Made with fiberglass and comes with an integrated N jack.

Applications

- 2.4~2.5GHz ISM Band
- IEEE 802.11b, 802.11g, 802.11n Wireless LAN
- Directional and multipoint applications
- Bluetooth
- Public Wireless Hotspot
- WiFi, RFID
- Wireless Video Systems

Features

- Superior performance
- Light weight
- All weather operation
- DC Short lightning protection
- Installed for vertical
- Includes tilt and swivel mast mount

Specifications

Frequency Range	2400 ~ 2500MHz
VSWR	≤ 1.5
Antenna Type	Collinear
Gain	10dBi
Polarization	Vertical
Maximum Power	50W
Vertical Beam-with	15 °
Horizontal Beam-with	360 °
Impedance	50 ohms
Connector	N jack
Length	900mm (35.433")
Diameter	25mm (0.984")
Weight	600g
Wind Survival	>150MPH
Radome Material	White Fiberglass
Operating Temperature	-40 ~ +80°C
Clamps	U-bolt
Mounting Pipe	32 ~ 45mm



NOTE: SOME SIZES, STYLES AND OPTIONS ARE NON-STANDARD, NON-CANCELLABLE AND NON-RETURNABLE.

2.4 ~ 2.5 GHz 12dBi Omni-Directional Antenna

MODEL NAME **OA004-2425W-N212**

Introductions

These antennas are professionally engineered and manufactured with the highest industry quality at the lowest possible price providing extreme value. This Omni antenna is designed for the 2.4GHz ISM band, supporting 2.4 to 2.483 GHz and provides superb performance in IEEE 802.11b/g WiFi and Bluetooth applications.

The antenna includes mounting bracket and hardware for up to 2" OD masts. Made with fiberglass and comes with an integrated N jack.

Applications

- 2.4~2.5GHz ISM Band
- IEEE 802.11b, 802.11g, 802.11n Wireless LAN
- Directional and multipoint applications
- Bluetooth
- Public Wireless Hotspot
- WiFi, RFID
- Wireless Video Systems

Features

- Superior performance
- Light weight
- All weather operation
- DC Short lightning protection
- Installed for vertical
- Includes tilt and swivel mast mount

Specifications

Frequency Range	2400 ~ 2500MHz
VSWR	≤ 1.3
Antenna Type	Collinear
Gain	12dBi
Polarization	Vertical
Maximum Power	50W
Vertical Beam-with	8 °
Horizontal Beam-with	360 °
Impedance	50 ohms
Connector	N jack
Length	1050mm (41.339")
Diameter	25mm (0.984")
Weight	700g
Wind Survival	>150MPH
Radome Material	White Fiberglass
Operating Temperature	-40 ~ +80°C
Clamps	U-bolt
Mounting Pipe	32 ~ 45mm



NOTE: SOME SIZES, STYLES AND OPTIONS ARE NON-STANDARD, NON-CANCELLABLE AND NON-RETURNABLE.

2.4 ~ 2.5 GHz 15dBi Omni-Directional Antenna

MODEL NAME **OA005-2425W-N215**

Introductions

These antennas are professionally engineered and manufactured with the highest industry quality at the lowest possible price providing extreme value. This Omni antenna is designed for the 2.4GHz ISM band, supporting 2.4 to 2.483 GHz and provides superb performance in IEEE 802.11b/g WiFi and Bluetooth applications.

The antenna includes mounting bracket and hardware for up to 2" OD masts. Made with fiberglass and comes with an integrated N jack.

Applications

- 2.4~2.5GHz ISM Band
- IEEE 802.11b, 802.11g, 802.11n Wireless LAN
- Directional and multipoint applications
- Bluetooth
- Public Wireless Hotspot
- WiFi, RFID
- Wireless Video Systems

Features

- Superior performance
- Light weight
- All weather operation
- DC Short lightning protection
- Installed for vertical
- Includes tilt and swivel mast mount

Specifications

Frequency Range	2400 ~ 2500MHz
VSWR	≤ 1.3
Antenna Type	Collinear
Gain	15dBi
Polarization	Vertical
Maximum Power	50W
Vertical Beam-with	6 °
Horizontal Beam-with	360 °
Impedance	50 ohms
Connector	N jack
Length	1450mm (57.087")
Diameter	25mm (0.984")
Weight	900g
Wind Survival	>150MPH
Radome Material	White Fiberglass
Operating Temperature	-40 ~ +80°C
Clamps	U-bolt
Mounting Pipe	32 ~ 45mm



Aggrandiz brace



NOTE: SOME SIZES, STYLES AND OPTIONS ARE NON-STANDARD, NON-CANCELLABLE AND NON-RETURNABLE.

5.4 ~ 5.9 GHz 8dBi Omni-Directional Antenna

MODEL NAME **OA006-5459W-N28**

Introductions

These antennas are professionally engineered and manufactured with the highest industry quality at the lowest possible price providing extreme value. This Omni antenna is designed for the 5.8GHz ISM band, supporting 5.4 to 5.9 GHz and provides superb performance in IEEE 802.11a WiFi and Bluetooth applications.

The antenna includes mounting bracket and hardware for up to 2" OD masts. Made with fiberglass and comes with an integrated N jack.

Applications

- 5.4~5.9GHz Band Applications
- 5.8GHz UNII, ISM Applications
- 5.8GHz Wireless LAN Systems
- Directional and multipoint applications
- Bluetooth, WiFi, CDMA, RFID
- Public Wireless Hotspot
- Wireless Video Systems

Features

- Superior performance
- Light weight & mini size
- All weather operation
- DC Short lightning protection
- Installed for vertical
- Includes tilt and swivel mast mount

Specifications

Frequency Range	5400 ~ 5900MHz
VSWR	≤ 1.5
Antenna Type	Collinear
Gain	8dBi
Polarization	Vertical
Maximum Power	100W
Vertical Beam-with	15 °
Horizontal Beam-with	360 °
Impedance	50 ohms
Connector	N jack
Length	370mm (14.567")
Diameter	25mm (0.984")
Weight	410g
Wind Survival	>150MPH
Radome Material	White Fiberglass
Operating Temperature	-40 ~ +80°C
Clamps	U-bolt
Mounting Pipe	32 ~ 45mm



NOTE: SOME SIZES, STYLES AND OPTIONS ARE NON-STANDARD, NON-CANCELLABLE AND NON-RETURNABLE.

www.mmtmachrone.com

USA TEL: 1-510-979-2188
FAX: 1-510-979-2189

TAIWAN TEL: 886-2-2755-3193
FAX: 886-2-2784-5109

SINGAPORE TEL: 65-6274-0566
FAX: 65-6274-7891

5.4 ~ 5.9 GHz 10dBi Omni-Directional Antenna

MODEL NAME **OA007-5459W-N210**

Introductions

These antennas are professionally engineered and manufactured with the highest industry quality at the lowest possible price providing extreme value. This Omni antenna is designed for the 5.8GHz ISM band, supporting 5.4 to 5.9 GHz and provides superb performance in IEEE 802.11a WiFi and Bluetooth applications.

The antenna includes mounting bracket and hardware for up to 2" OD masts. Made with fiberglass and comes with an integrated N jack.

Applications

- 5.4~5.9GHz Band Applications
- 5.8GHz UNII, ISM Applications
- 5.8GHz Wireless LAN Systems
- Directional and multipoint applications
- Bluetooth, WiFi, CDMA, RFID
- Public Wireless Hotspot
- Wireless Video Systems

Features

- Superior performance
- Light weight & mini size
- All weather operation
- DC Short lightning protection
- Installed for vertical
- Includes tilt and swivel mast mount

Specifications

Frequency Range	5400 ~ 5900MHz
VSWR	≤ 1.5
Antenna Type	Collinear
Gain	10dBi
Polarization	Vertical
Maximum Power	100W
Vertical Beam-with	10 °
Horizontal Beam-with	360 °
Impedance	50 ohms
Connector	N jack
Length	530mm (20.866")
Diameter	25mm (0.984")
Weight	430g
Wind Survival	>150MPH
Radome Material	White Fiberglass
Operating Temperature	-40 ~ +80°C
Clamps	U-bolt
Mounting Pipe	32 ~ 45mm



NOTE: SOME SIZES, STYLES AND OPTIONS ARE NON-STANDARD, NON-CANCELLABLE AND NON-RETURNABLE.

www.mmtmachrone.com

USA TEL: 1-510-979-2188
FAX: 1-510-979-2189

TAIWAN TEL: 886-2-2755-3193
FAX: 886-2-2784-5109

SINGAPORE TEL: 65-6274-0566
FAX: 65-6274-7891

5.4 ~ 5.9 GHz 12dBi Omni-Directional Antenna

MODEL NAME **OA008-5459W-N212**

Introductions

These antennas are professionally engineered and manufactured with the highest industry quality at the lowest possible price providing extreme value. This Omni antenna is designed for the 5.8GHz ISM band, supporting 5.4 to 5.9 GHz and provides superb performance in IEEE 802.11a WiFi and Bluetooth applications.

The antenna includes mounting bracket and hardware for up to 2" OD masts. Made with fiberglass and comes with an integrated N jack.

Applications

- 5.4~5.9GHz Band Applications
- 5.8GHz UNII, ISM Applications
- 5.8GHz Wireless LAN Systems
- Directional and multipoint applications
- Bluetooth, WiFi, CDMA, RFID
- Public Wireless Hotspot
- Wireless Video Systems

Features

- Superior performance
- Light weight & mini size
- All weather operation
- DC Short lightning protection
- Installed for vertical
- Includes tilt and swivel mast mount

Specifications

Frequency Range	5400 ~ 5900MHz
VSWR	≤ 1.5
Antenna Type	Collinear
Gain	12dBi
Polarization	Vertical
Maximum Power	100W
Vertical Beam-with	8 °
Horizontal Beam-with	360 °
Impedance	50 ohms
Connector	N jack
Length	620mm (24.409")
Diameter	25mm (0.984")
Weight	510g
Wind Survival	>150MPH
Radome Material	White Fiberglass
Operating Temperature	-40 ~ +80°C
Clamps	U-bolt
Mounting Pipe	32 ~ 45mm



NOTE: SOME SIZES, STYLES AND OPTIONS ARE NON-STANDARD, NON-CANCELLABLE AND NON-RETURNABLE.

4.9 ~ 5.1 GHz 10dBi Omni-Directional Antenna

MODEL NAME **OA009-4951W-N210**

Introductions

These antennas are professionally engineered and manufactured with the highest industry quality at the lowest possible price providing extreme value. This Omni antenna is designed for the 5.0GHz ISM band, supporting 4.9 to 5.1 GHz and provides superb performance in IEEE 802.11a WiFi applications.

The antenna includes mounting bracket and hardware for up to 2" OD masts. Made with fiberglass and comes with an integrated N jack.

Applications

- 4.9~5.1GHz Band Applications
- Homeland Security
- Public Safety Services: Fire, Police, Security
- Rapid Deployment Installations
- Large Scale WLL
- WLAN / Hot Spot
- WLAN / On-Scene Incident Command

Features

- Superior performance
- Light weight & mini size
- All weather operation
- DC Short lightning protection
- Installed for vertical
- Includes tilt and swivel mast mount

Specifications

Frequency Range	4900 ~ 5100MHz
VSWR	≤ 1.5
Antenna Type	Collinear
Gain	10dBi
Polarization	Vertical
Maximum Power	100W
Vertical Beam-with	10 °
Horizontal Beam-with	360 °
Impedance	50 ohms
Connector	N jack
Length	530mm (20.866")
Diameter	25mm (0.984")
Weight	480g
Wind Survival	>150MPH
Radome Material	White Fiberglass
Operating Temperature	-40 ~ +80°C
Clamps	U-bolt
Mounting Pipe	32 ~ 45mm



NOTE: SOME SIZES, STYLES AND OPTIONS ARE NON-STANDARD, NON-CANCELLABLE AND NON-RETURNABLE.

www.mmtmachrone.com

USA TEL: 1-510-979-2188
FAX: 1-510-979-2189

TAIWAN TEL: 886-2-2755-3193
FAX: 886-2-2784-5109

SINGAPORE TEL: 65-6274-0566
FAX: 65-6274-7891

5.1 ~ 5.9 GHz 23dBi Wide Band Directional Panel Antenna

MODEL NAME PA001-5159W-N223

Introductions

These antennas are professionally engineered and manufactured with the highest industry quality at the lowest possible price providing extreme value. The Panel antenna is designed for the 5.1 ~ 5.8GHz ISM band, supporting 5.4 to 5.9 GHz and provides superb performance in IEEE 802.11a WiMAX.

The antenna includes mounting bracket and hardware for up to 2" OD masts. Made with Apparel is ABS(UV) and Metal with an integrated N jack.

Applications

- 5.1~5.9 GHz ISM Band
- 5.3 GHz Band Applications
- 5.4 GHz Band Applications
- 5.8 GHz UNII Applications
- IEEE802.11a Wireless LAN
- Unlicensed European 5.4 GHz Band Applications
- WiMAX Technology
- 5.8GHz Wireless Video Systems

Features

- Superior performance
- Light weight
- All weather operation
- DC Short lightning protection
- Installed for vertical
- Includes tilt and swivel mast mount
- Frequency Ultra-wide
- Can be installed for either vertical or horizontal polarization

Specifications

Frequency Range	5100 ~ 5900MHz
VSWR	≤ 1.5
Return Loss	$\geq -15\text{db}$
Antenna Type	PCB patch array
Gain	23dBi
Polarization	Vertical or Horizontal
Maximum Power	50W
Vertical Beam-with	8 °
Horizontal Beam-with	8 °
Impedance	50 ohms
Connector	N jack
Length	370x370mm
Depth	35mm
Weight	700g
Wind Survival	>120MPH
Radome Material	ABS+UV resistance
Operating Temperature	-40 ~ +80°C
Down-tilt	"L" Style 0-30 °
Mounting/Clamps	32 ~ 45mm/U-bolt



NOTE: SOME SIZES, STYLES AND OPTIONS ARE NON-STANDARD, NON-CANCELLABLE AND NON-RETURNABLE.