

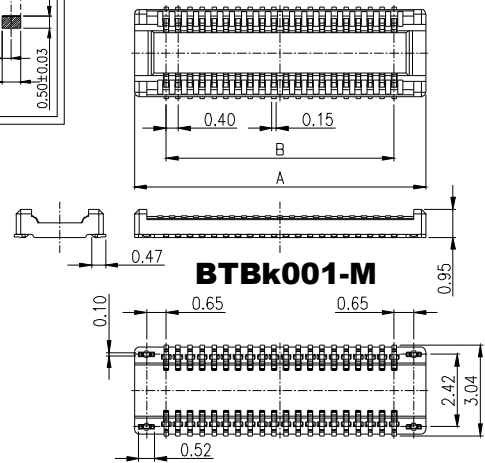
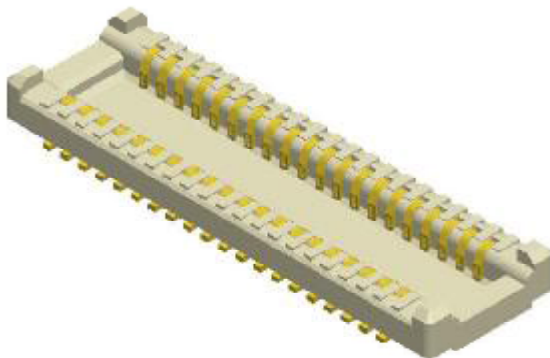
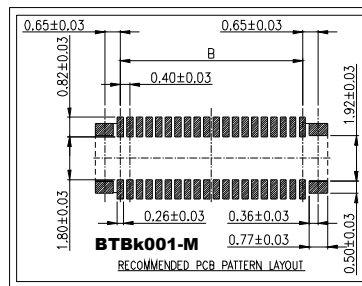
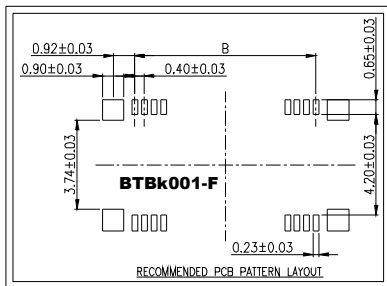
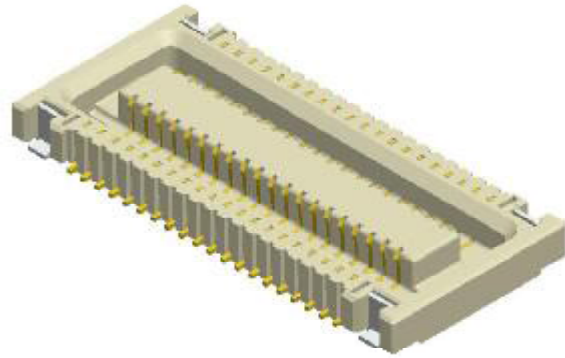
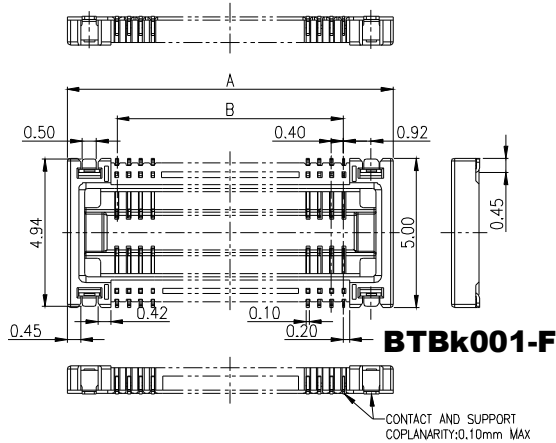
**MMI**

---

**BOARD TO BOARD  
PITCH: 0.40mm**

---

# 0.40mm BOARD TO BOARD - SURFACE MOUNT TYPE - Pt



- BTB**  
BOARD TO BOARD
- k**  
PITCH  
k: 0.40 mm
- 001**  
SERIES NO.
- 
- Pt**  
PCB TYPE  
Pt: SURFACE MOUNT TYPE
- X**  
GENDER  
M: MALE  
F: FEMALE
- ##**  
NO. OF PINS
- Gft**  
CONTACT PLATING  
Gft: GOLD FLASH ON CONTACT,  
TIN PLATED ON SOLDER TAIL

PART NUMBER	A	B
BTBk001-PtF20Gft	6.94	3.60
BTBk001-PtF24Gft	7.74	4.40
BTBk001-PtF30Gft	8.94	5.60
BTBk001-PtF40Gft	10.94	7.60

PART NUMBER	A	B
BTBk001-PtM20Gft	5.70	3.60
BTBk001-PtM24Gft	6.50	4.40
BTBk001-PtM30Gft	7.70	5.60
BTBk001-PtM40Gft	9.70	7.60

## SPECIFICATIONS

CONTACT RATING: 0.1 AMPS  
 INSULATOR RESISTANCE: 100Ω MIN.  
 DIELECTRIC WITHSTANDING: AC 125V  
 OPERATING TEMPERATURE: -40°C~+105°C

## MATERIALS

CONTACT MATERIAL: COPPER ALLOY  
 INSULATOR MATERIAL: LCP, UL 94V-0  
 FINISH: GOLD FLASH ON CONTACT, TIN PLATED ON SOLDER TAIL

**NOTE** : SOME SIZES, STYLES AND OPTION ARE NON-STANDARD, NON-CANCELLABLE, NON-RETURNABLE