

REVISIONS							
SYM	DESCRIPTION	DATE	APPROVED	SYM	DESCRIPTION	DATE	APPROVED
△				△			
△				△			
<b>**CUSTOMER DRAWING FOR REFERENCE ONLY, SAMPLES APPROVAL ARE REQUIRED!!</b>							020

D

C

B

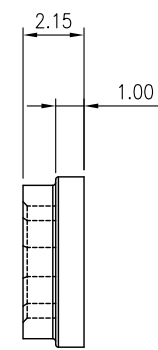
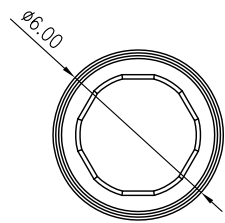
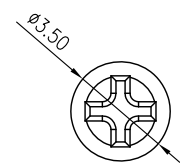
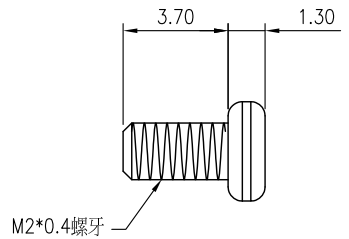
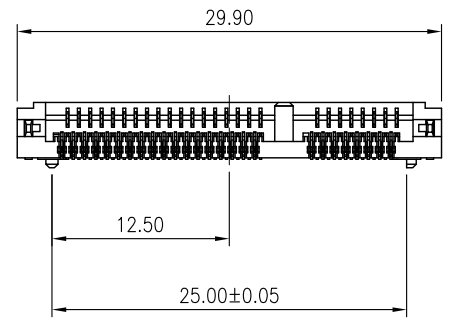
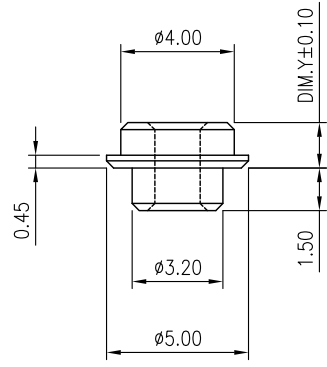
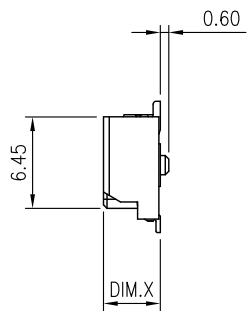
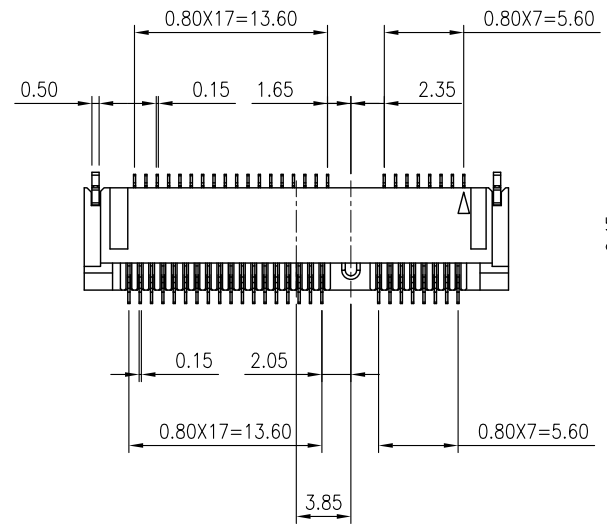
A

D

C

B

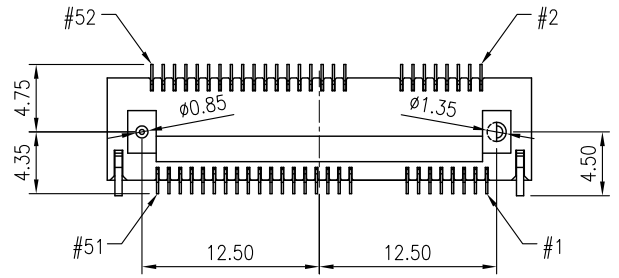
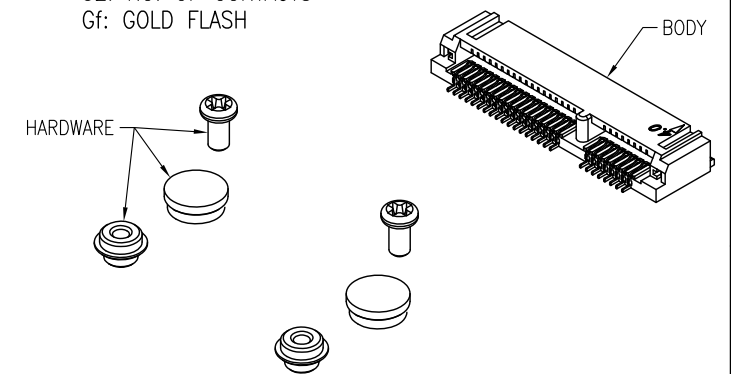
A



**SPECIFICATION:**  
 CONTACT RESISTANCE: 50mΩ MAX.  
 INSULATION RESISTANCE: 500MΩ MIN.  
 DIELECTRIC WITHSTANDING VOLTAGE: 0.5mA MAX.  
 OPERATING TEMPERATURE: -40°C TO +80°C  
 STORAGE TEMPERATURE: -40°C TO +85°C

**MATERIAL:**  
 PIN: COPPER ALLOY, GOLD PLATED  
 INSULATOR: LCP, UL94-V0

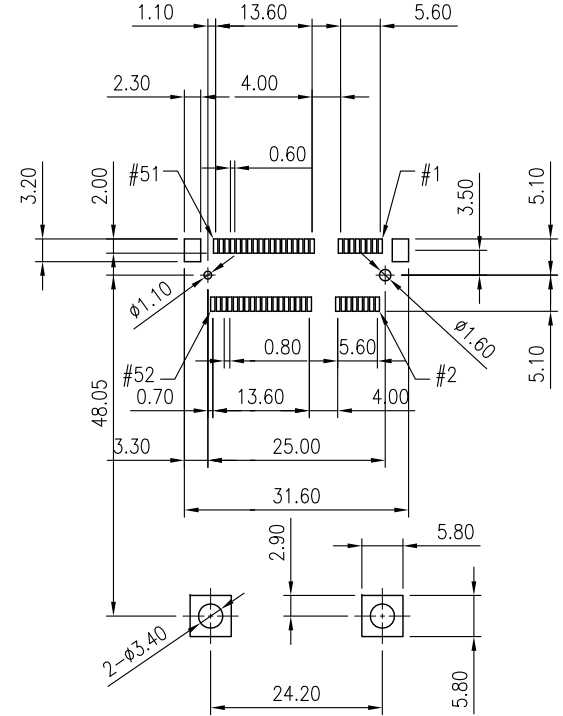
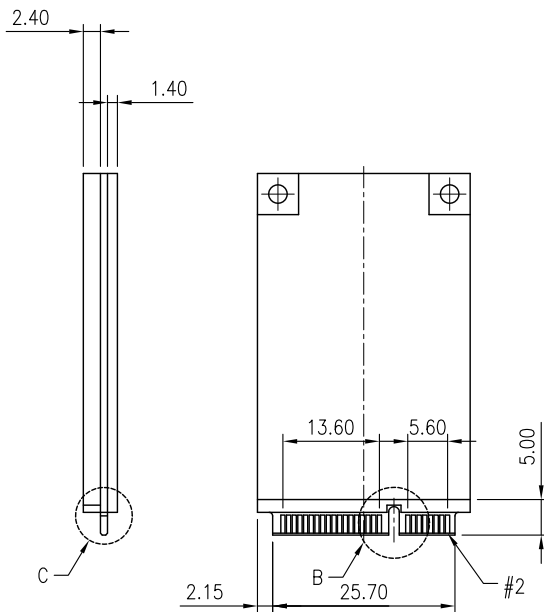
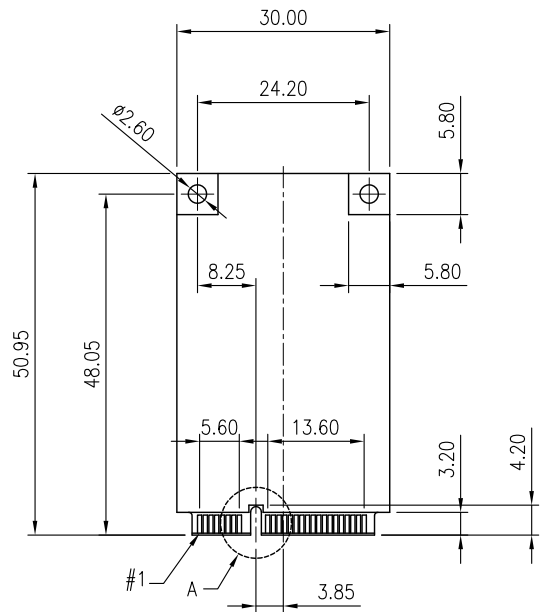
**ORDER INFORMATION:**  
 MINIPCIE100X-Rt52Gf  
 MINIPCIE: MINI PCI EXPRESS CONNECTOR  
 100X SERIES NO.  
 1001: DIM.X= 4.00mm, DIM.Y= 1.60mm  
 1002: DIM.X= 5.20mm, DIM.Y= 2.80mm  
 1003: DIM.X= 5.60mm, DIM.Y= 3.20mm  
 1004: DIM.X= 6.00mm, DIM.Y= 3.60mm  
 1005: DIM.X= 6.80mm, DIM.Y= 4.40mm  
 1006: DIM.X= 8.00mm, DIM.Y= 5.60mm  
 1007: DIM.X= 9.20mm, DIM.Y= 6.80mm  
 1008: DIM.X= 9.90mm, DIM.Y= 7.50mm  
 Rt: PCB TYPE, RIGHT ANGLE SURFACE MOUNT  
 52: NO. OF CONTACTS  
 Gf: GOLD FLASH



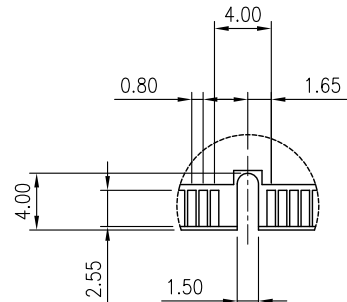
TOLERANCES UNLESS OTHERWISE SPECIFIED ±0.25			SIGNATURES	DATE	MODEL
SYMBOL	UNIT	SCALE	DRAWN KEN	04/OCT/06'	TITLE
△	mm	2/1	CHECKED WENDY	04/OCT/06'	MINI PCI EXPRESS CONNECTOR
APPROVALS					NO.
					MINIPCIE100_-Rt52Gf

MMT CORPORATION

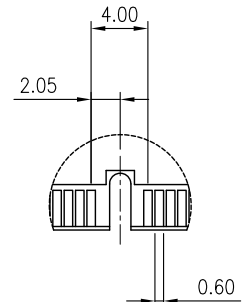
REVISIONS							
SYM	DESCRIPTION	DATE	APPROVED	SYM	DESCRIPTION	DATE	APPROVED
△				△			
△				△			
**CUSTOMER DRAWING FOR REFERENCE ONLY, SAMPLES APPROVAL ARE REQUIRED!!							020



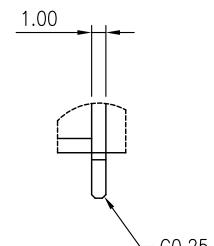
PCB LAYOUT



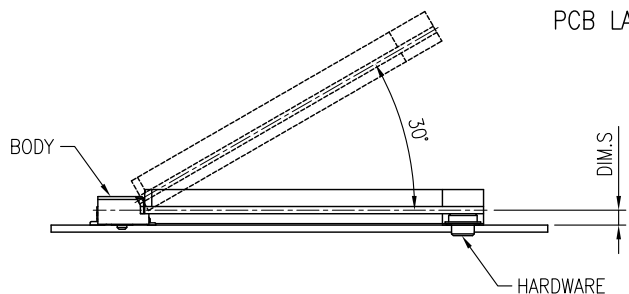
DTEAIL "A"  
(SCALE 2:1)



DTEAIL "B"  
(SCALE 2:1)



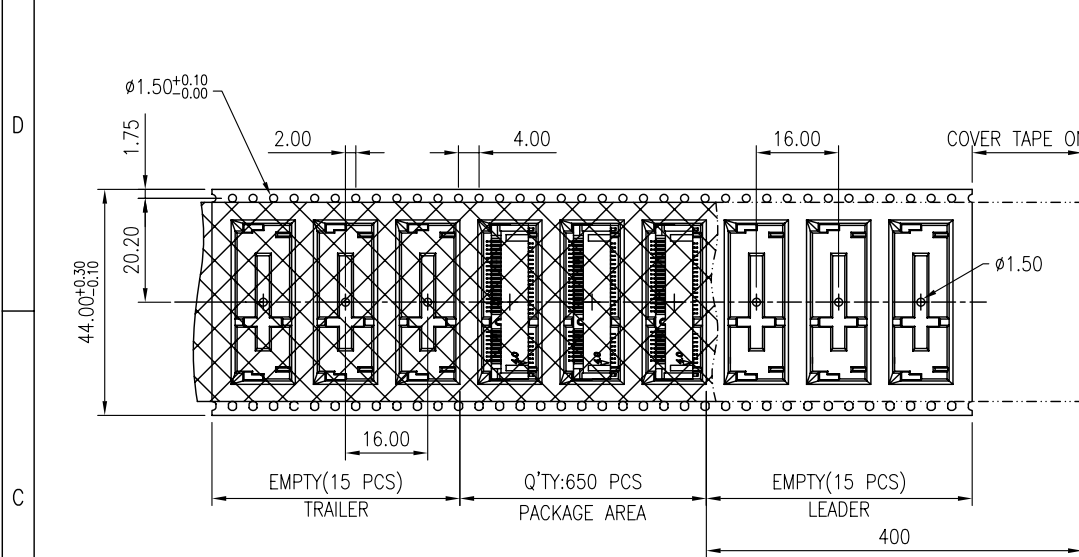
DTEAIL "C"  
(SCALE 2:1)



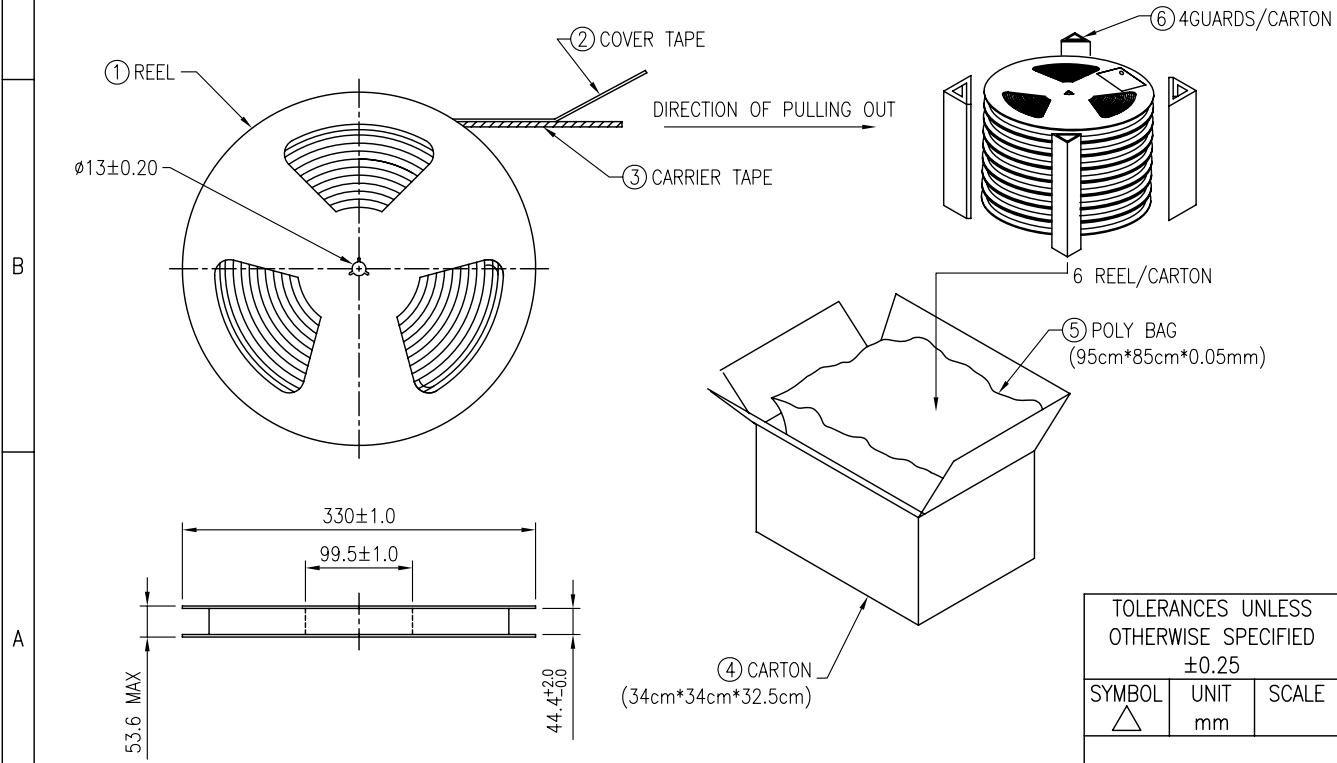
MINI PCI EXPRESS SERIES	DIM.S
MINIPCIE1001	2.11
MINIPCIE1002	3.31
MINIPCIE1003	3.71
MINIPCIE1004	4.11
MINIPCIE1005	4.91
MINIPCIE1006	6.11
MINIPCIE1007	7.31
MINIPCIE1008	8.00

TOLERANCES UNLESS OTHERWISE SPECIFIED ±0.25			SIGNATURES		DATE	MODEL
SYMBOL	UNIT	SCALE	DRAWN	KEN	04/OCT/06'	TITLE
△	mm	1/1	CHECKED	WENDY	04/OCT/06'	MINI PCI EXPRESS CONNECTOR
APPROVALS						NO. MINIPCIE100_-Rt52Gf
<b>MMT CORPORATION</b>						

REVISIONS							
SYM	DESCRIPTION	DATE	APPROVED	SYM	DESCRIPTION	DATE	APPROVED
△				△			
△				△			
**CUSTOMER DRAWING FOR REFERENCE ONLY, SAMPLES APPROVAL ARE REQUIRED!!							020



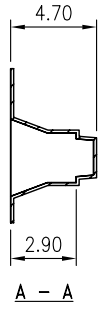
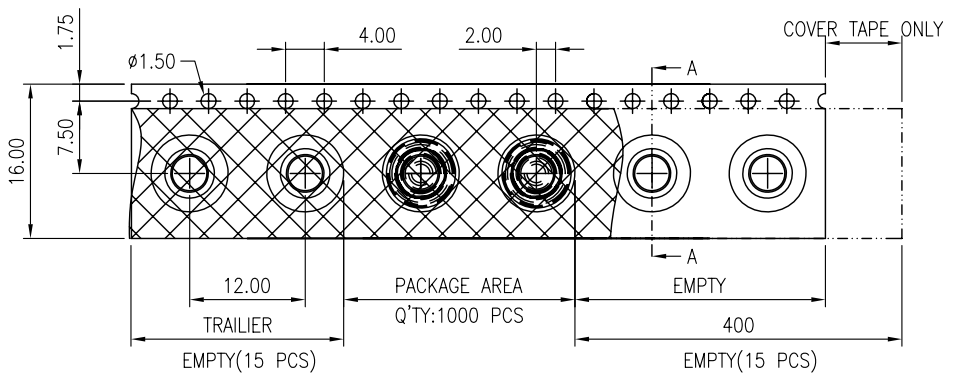
- MATERIAL:
1. REEL H=53.6 MAX.
  2. COVER W=37.5mm
  3. CARRIER TAPE W=44mm
  4. CARTON, CARTON/6 REEL/3900 PCS
  5. POLY BAG, 1 BAG/CARTON
  6. GUARD 4 GUARDS/CARTON



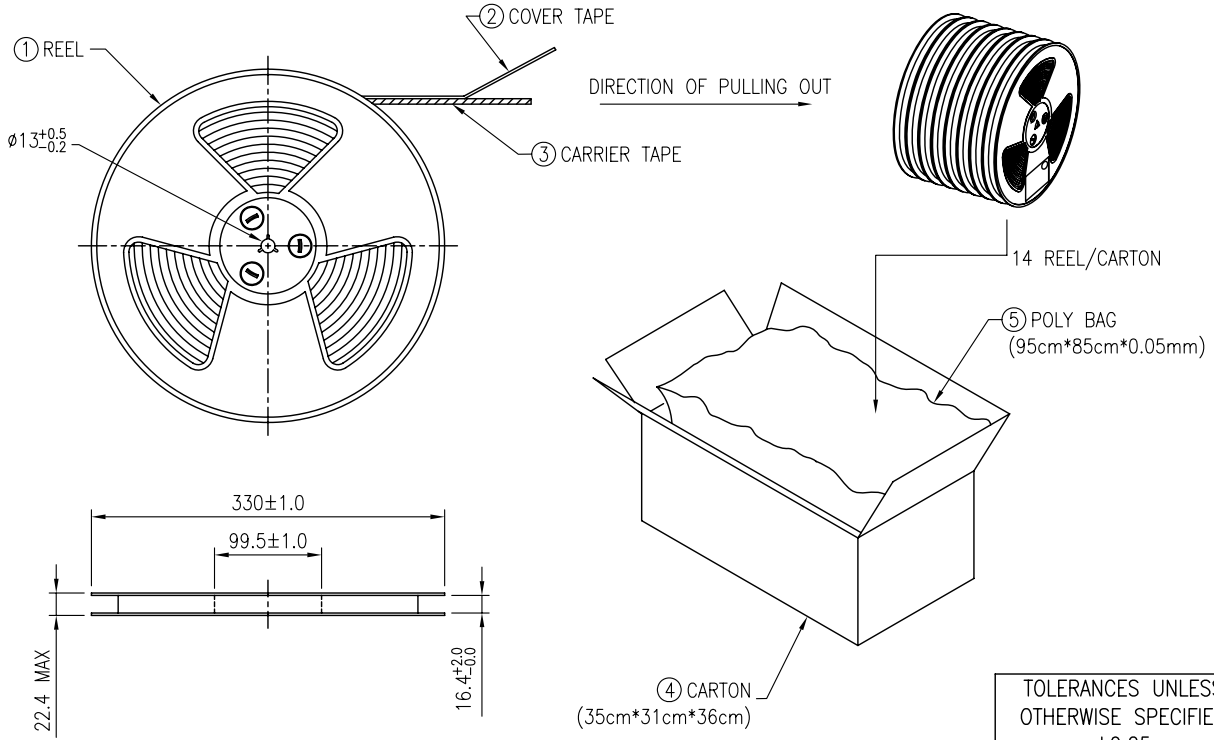
TOLERANCES UNLESS OTHERWISE SPECIFIED ±0.25			SIGNATURES	DATE	MODEL
SYMBOL	UNIT	SCALE	DRAWN AARON	02/JUL/10'	TITLE
△	mm		CHECKED PEGGY	02/JUL/10'	PACKAGE INFORMATION FOR 4.0MM
			APPROVALS		NO.

MMT CORPORATION

REVISIONS							
SYM	DESCRIPTION	DATE	APPROVED	SYM	DESCRIPTION	DATE	APPROVED
△				△			
△				△			
**CUSTOMER DRAWING FOR REFERENCE ONLY, SAMPLES APPROVAL ARE REQUIRED!!							020



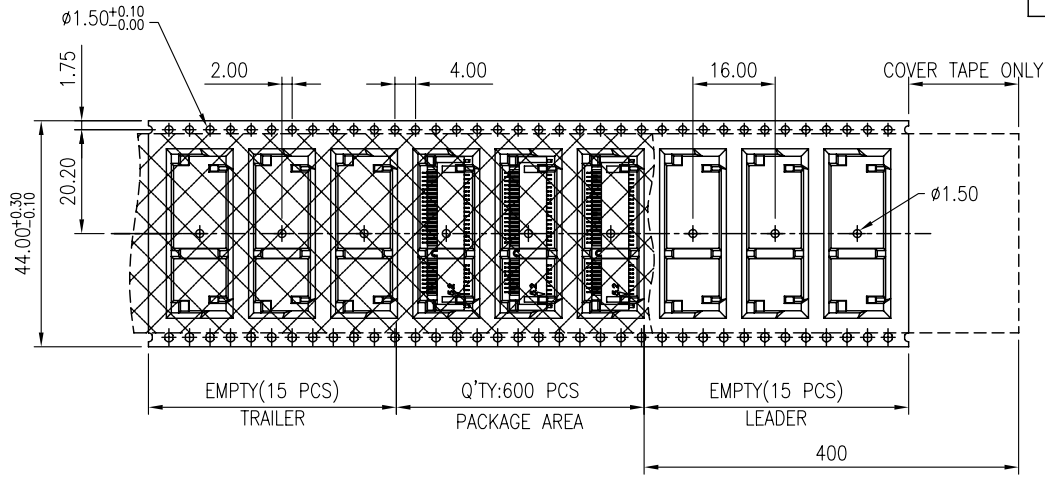
- MATERIAL:
1. REEL H=22.4 MAX.
  2. COVER W=13.3mm
  3. CARRIER TAPE W=16mm
  4. CARTON, CARTON/14 REEL/14000 PCS(ONE SET=TWO PIECES)
  5. POLY BAG, 1 BAG/CARTON
  6. SCREW, CARTON/14000PCS(ONE SET=TWO PIECES)



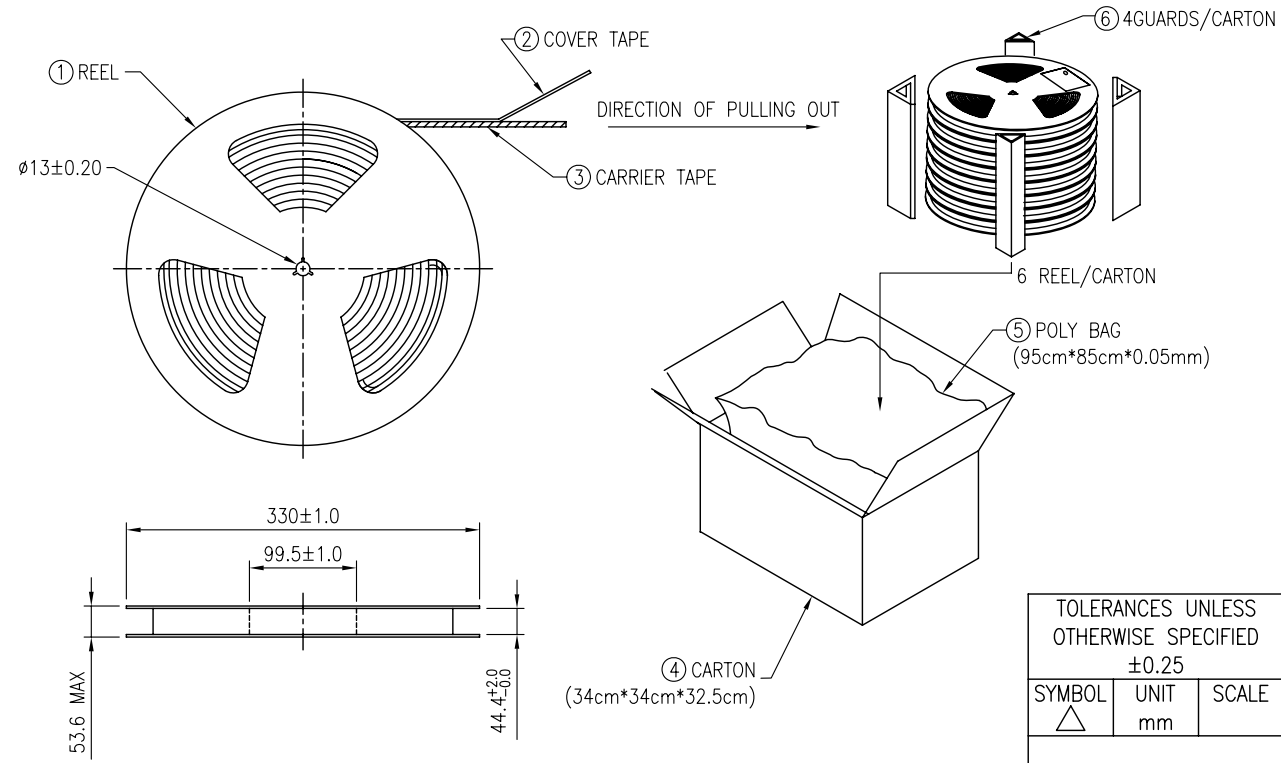
TOLERANCES UNLESS OTHERWISE SPECIFIED ±0.25			SIGNATURES	DATE	MODEL
SYMBOL	UNIT	SCALE	DRAWN AARON	02/JUL/10'	TITLE
△	mm		CHECKED PEGGY	02/JUL/10'	PACKAGE INFORMATION FOR 4.0MM
			APPROVALS		NO.

MMT CORPORATION

REVISIONS							
SYM	DESCRIPTION	DATE	APPROVED	SYM	DESCRIPTION	DATE	APPROVED
△				△			
△				△			
**CUSTOMER DRAWING FOR REFERENCE ONLY, SAMPLES APPROVAL ARE REQUIRED!!							020



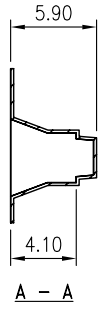
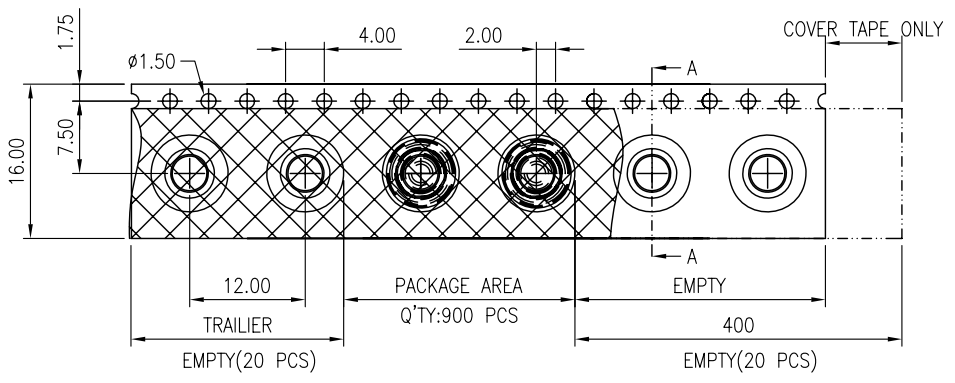
- MATERIAL:
1. REEL H=53.6 MAX.
  2. COVER W=37.5mm
  3. CARRIER TAPE W=44mm
  4. CARTON, CARTON/6 REEL/3600 PCS
  5. POLY BAG, 1 BAG/CARTON
  6. GUARD 4 GUARDS/CARTON



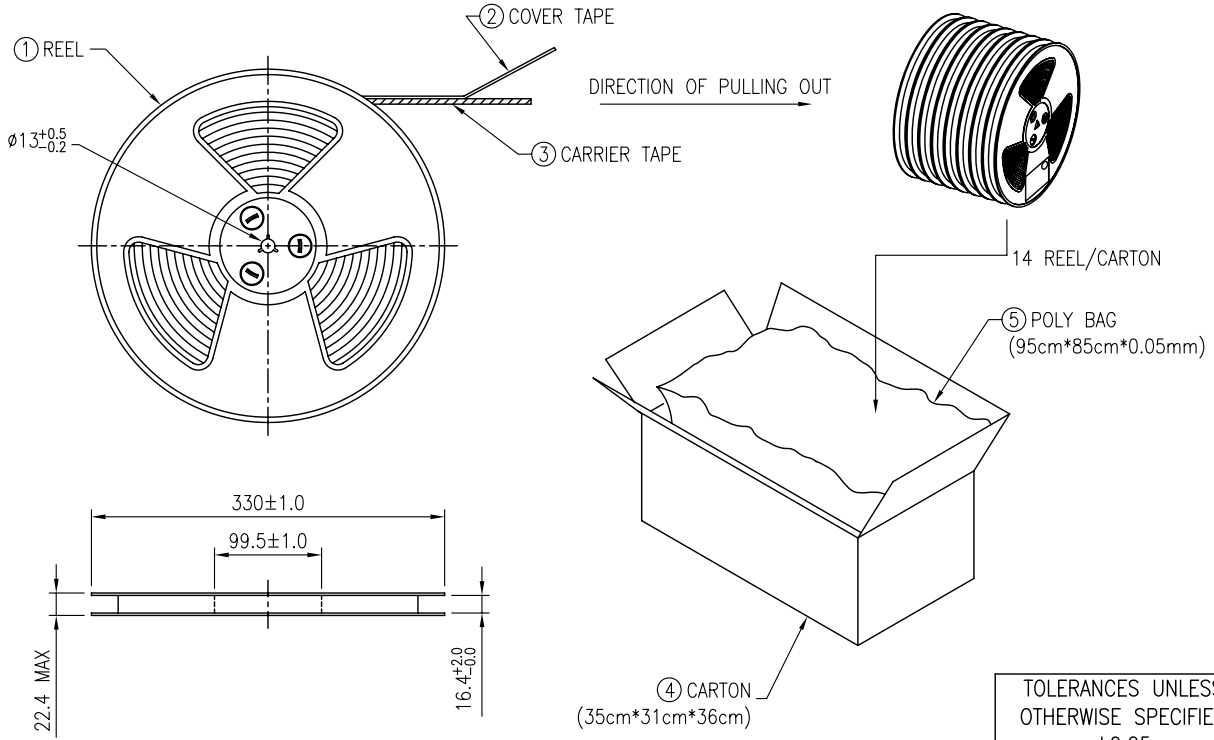
TOLERANCES UNLESS OTHERWISE SPECIFIED ±0.25			SIGNATURES		DATE	MODEL
SYMBOL △	UNIT	SCALE	DRAWN	AARON	02/JUL/10'	TITLE
	mm		CHECKED	PEGGY	02/JUL/10'	PACKAGE INFORMATION FOR 5.2MM
			APPROVALS			NO.

MMT CORPORATION

REVISIONS							
SYM	DESCRIPTION	DATE	APPROVED	SYM	DESCRIPTION	DATE	APPROVED
△				△			
△				△			
**CUSTOMER DRAWING FOR REFERENCE ONLY, SAMPLES APPROVAL ARE REQUIRED!!							020



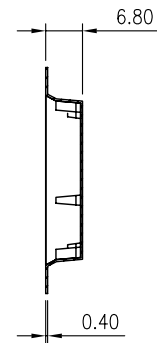
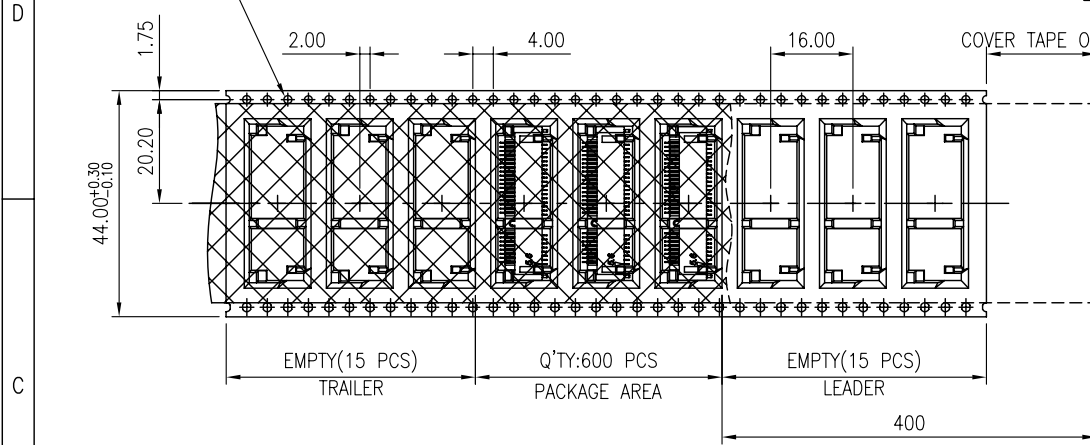
- MATERIAL:
1. REEL H=22.4 MAX.
  2. COVER W=13.3mm
  3. CARRIER TAPE W=16mm
  4. CARTON, CARTON/14 REEL/12600 PCS(ONE SET=TWO PIECES)
  5. POLY BAG, 1 BAG/CARTON
  6. SCREW, CARTON/12600PCS(ONE SET=TWO PIECES)



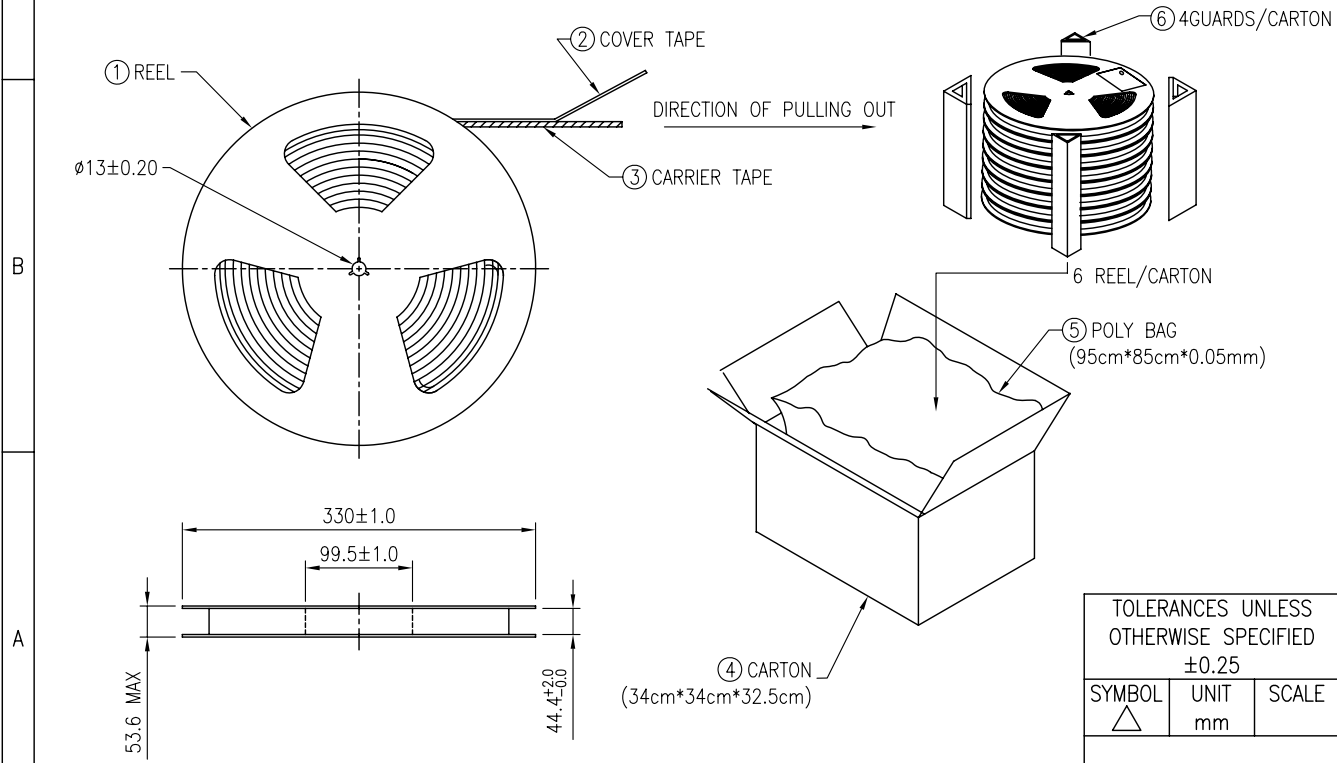
TOLERANCES UNLESS OTHERWISE SPECIFIED ±0.25			SIGNATURES	DATE	MODEL
SYMBOL	UNIT	SCALE	DRAWN	AARON	02/JUL/10'
△	mm		CHECKED	PEGGY	02/JUL/10'
			APPROVALS		TITLE PACKAGE INFORMATION FOR 5.2MM NO.

MMT CORPORATION

REVISIONS							
SYM	DESCRIPTION	DATE	APPROVED	SYM	DESCRIPTION	DATE	APPROVED
△				△			
△				△			
**CUSTOMER DRAWING FOR REFERENCE ONLY, SAMPLES APPROVAL ARE REQUIRED!!							020



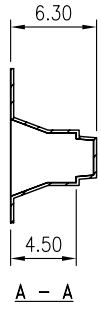
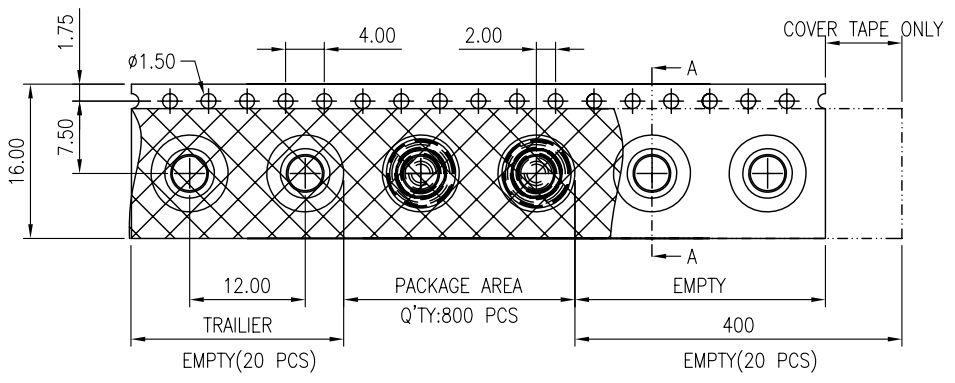
- MATERIAL:
1. REEL H=53.6 MAX.
  2. COVER W=37.5mm
  3. CARRIER TAPE W=44mm
  4. CARTON, CARTON/6 REEL/3600 PCS
  5. POLY BAG, 1 BAG/CARTON
  6. GUARD 4 GUARDS/CARTON



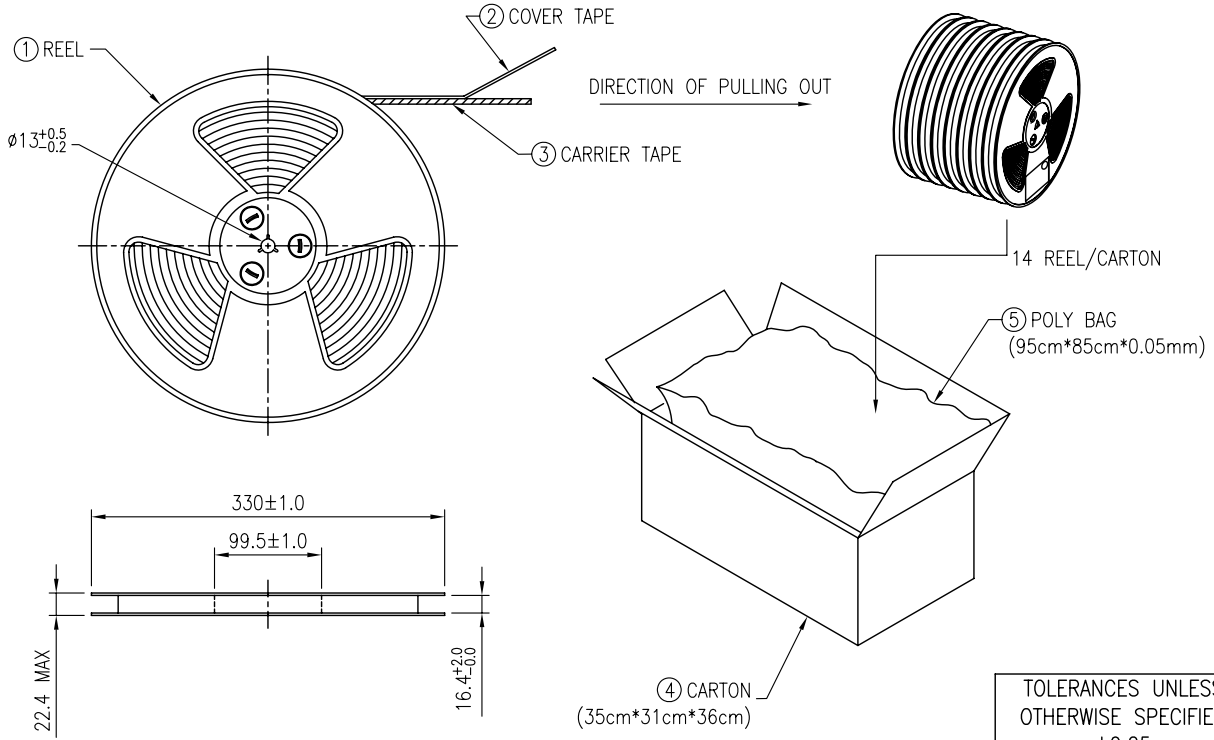
TOLERANCES UNLESS OTHERWISE SPECIFIED ±0.25			SIGNATURES	DATE	MODEL
SYMBOL	UNIT	SCALE	DRAWN AARON	02/JUL/10'	TITLE
△	mm		CHECKED PEGGY	02/JUL/10'	PACKAGE INFORMATION FOR 5.6MM
			APPROVALS		NO.

MMT CORPORATION

REVISIONS							
SYM	DESCRIPTION	DATE	APPROVED	SYM	DESCRIPTION	DATE	APPROVED
△				△			
△				△			
**CUSTOMER DRAWING FOR REFERENCE ONLY, SAMPLES APPROVAL ARE REQUIRED!!							020



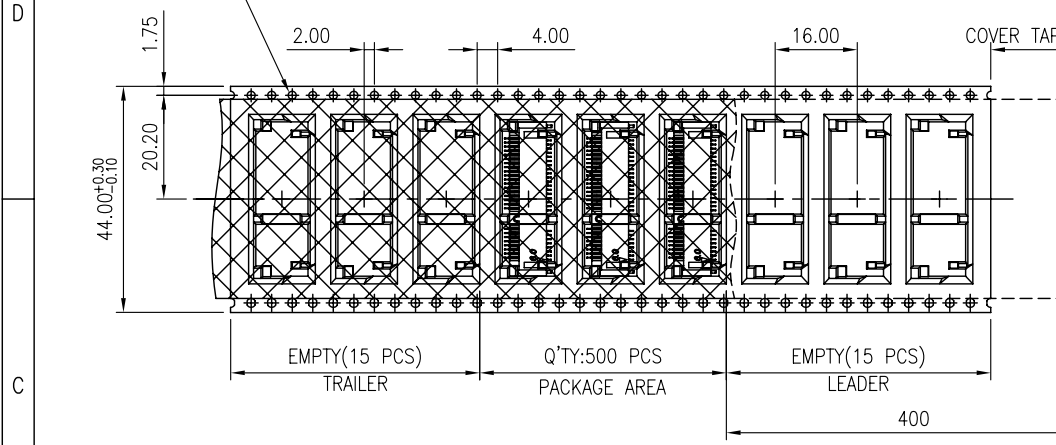
- MATERIAL:
1. REEL H=22.4 MAX.
  2. COVER W=13.3mm
  3. CARRIER TAPE W=16mm
  4. CARTON, CARTON/14 REEL/11200 PCS(ONE SET=TWO PIECES)
  5. POLY BAG, 1 BAG/CARTON
  6. SCREW, CARTON/11200PCS(ONE SET=TWO PIECES)



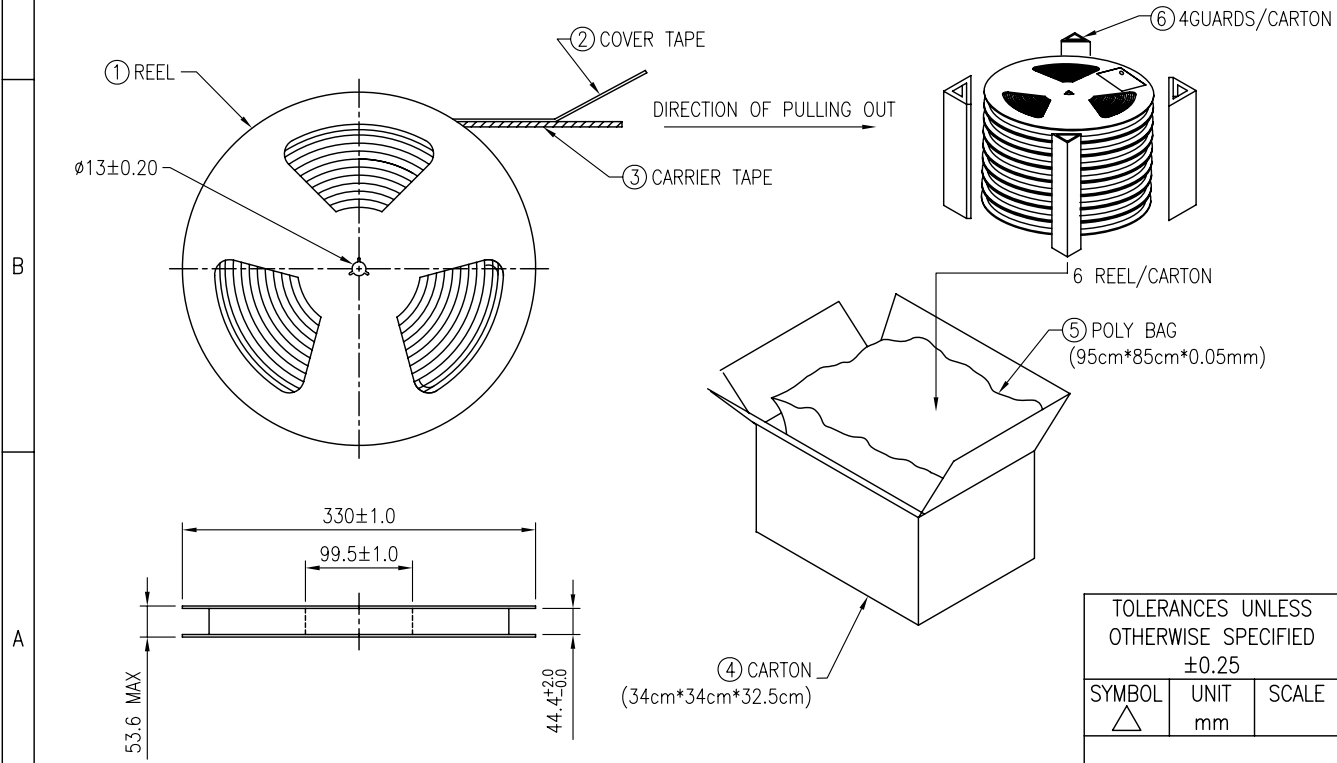
TOLERANCES UNLESS OTHERWISE SPECIFIED ±0.25			SIGNATURES	DATE	MODEL
SYMBOL	UNIT	SCALE	DRAWN AARON	02/JUL/10'	TITLE
△	mm		CHECKED PEGGY	02/JUL/10'	PACKAGE INFORMATION FOR 5.6MM
			APPROVALS		NO.

MMT CORPORATION

REVISIONS							
SYM	DESCRIPTION	DATE	APPROVED	SYM	DESCRIPTION	DATE	APPROVED
△				△			
△				△			
<b>**CUSTOMER DRAWING FOR REFERENCE ONLY, SAMPLES APPROVAL ARE REQUIRED!!</b>							020



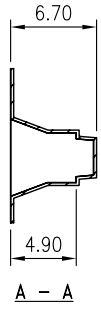
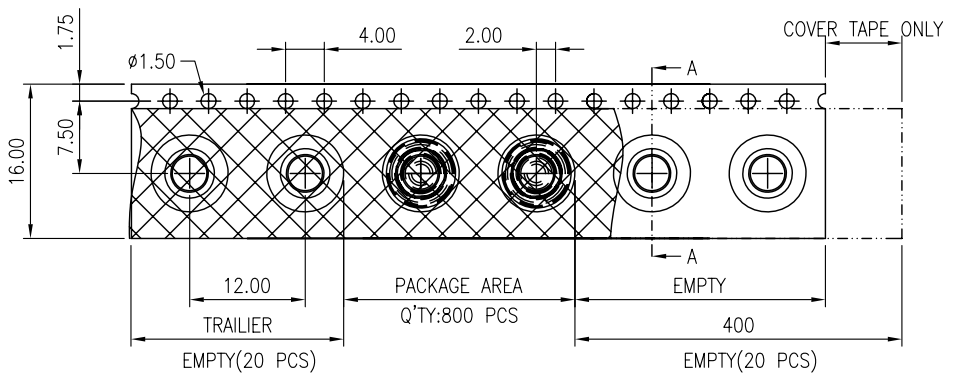
- MATERIAL:**
1. REEL H=53.6 MAX.
  2. COVER W=37.5mm
  3. CARRIER TAPE W=44mm
  4. CARTON, CARTON/6 REEL/3000 PCS
  5. POLY BAG, 1 BAG/CARTON
  6. GUARD 4 GUARDS/CARTON



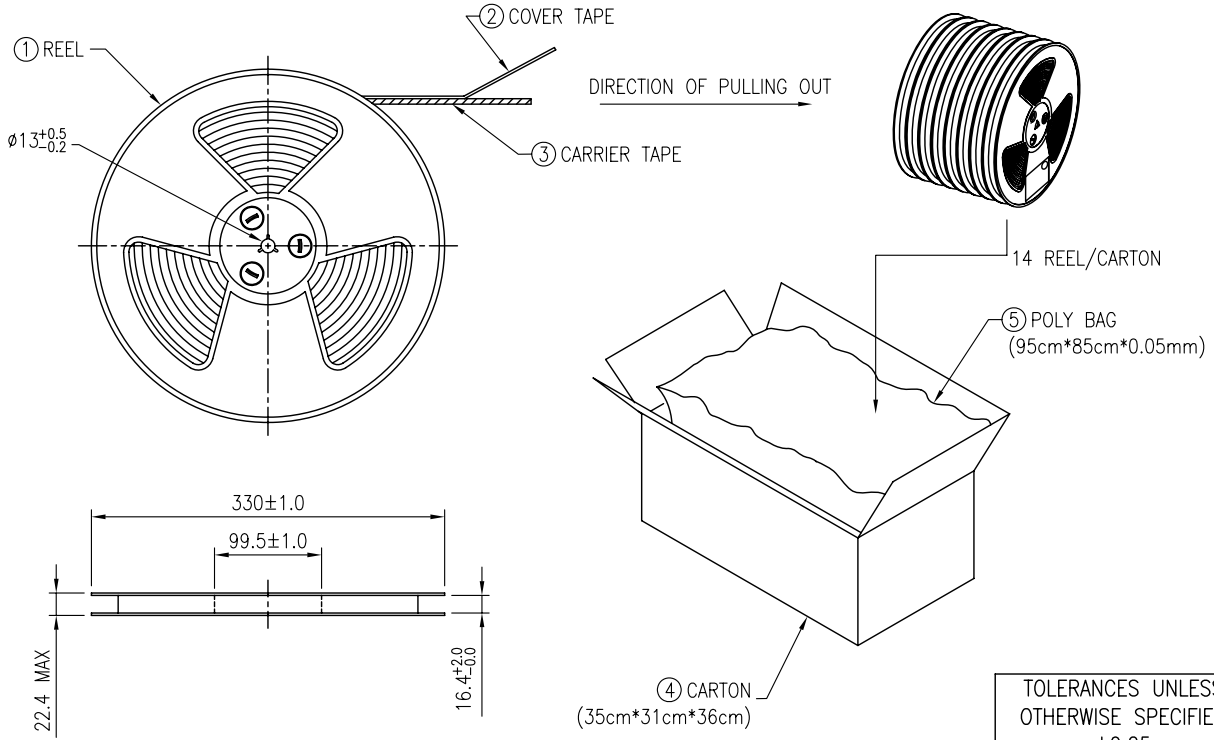
TOLERANCES UNLESS OTHERWISE SPECIFIED ±0.25			SIGNATURES	DATE	MODEL
SYMBOL	UNIT	SCALE	DRAWN AARON	02/JUL/10'	TITLE
△	mm		CHECKED PEGGY	02/JUL/10'	PACKAGE INFORMATION FOR 6.0MM
			APPROVALS		NO.

**MMT CORPORATION**

REVISIONS							
SYM	DESCRIPTION	DATE	APPROVED	SYM	DESCRIPTION	DATE	APPROVED
△				△			
△				△			
<b>**CUSTOMER DRAWING FOR REFERENCE ONLY, SAMPLES APPROVAL ARE REQUIRED!!</b>							020



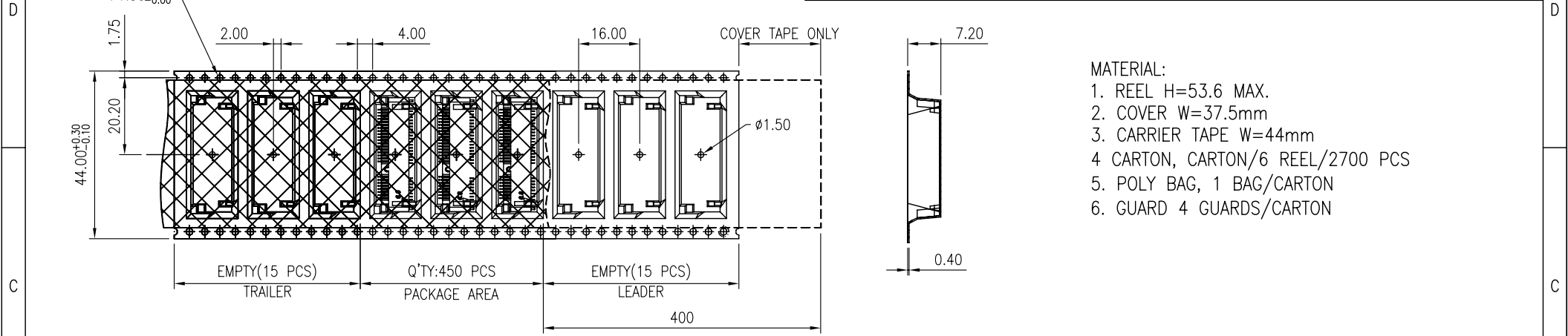
- MATERIAL:
1. REEL H=22.4 MAX.
  2. COVER W=13.3mm
  3. CARRIER TAPE W=16mm
  4. CARTON, CARTON/14 REEL/11200 PCS(ONE SET=TWO PIECES)
  5. POLY BAG, 1 BAG/CARTON
  6. SCREW, CARTON/11200PCS(ONE SET=TWO PIECES)



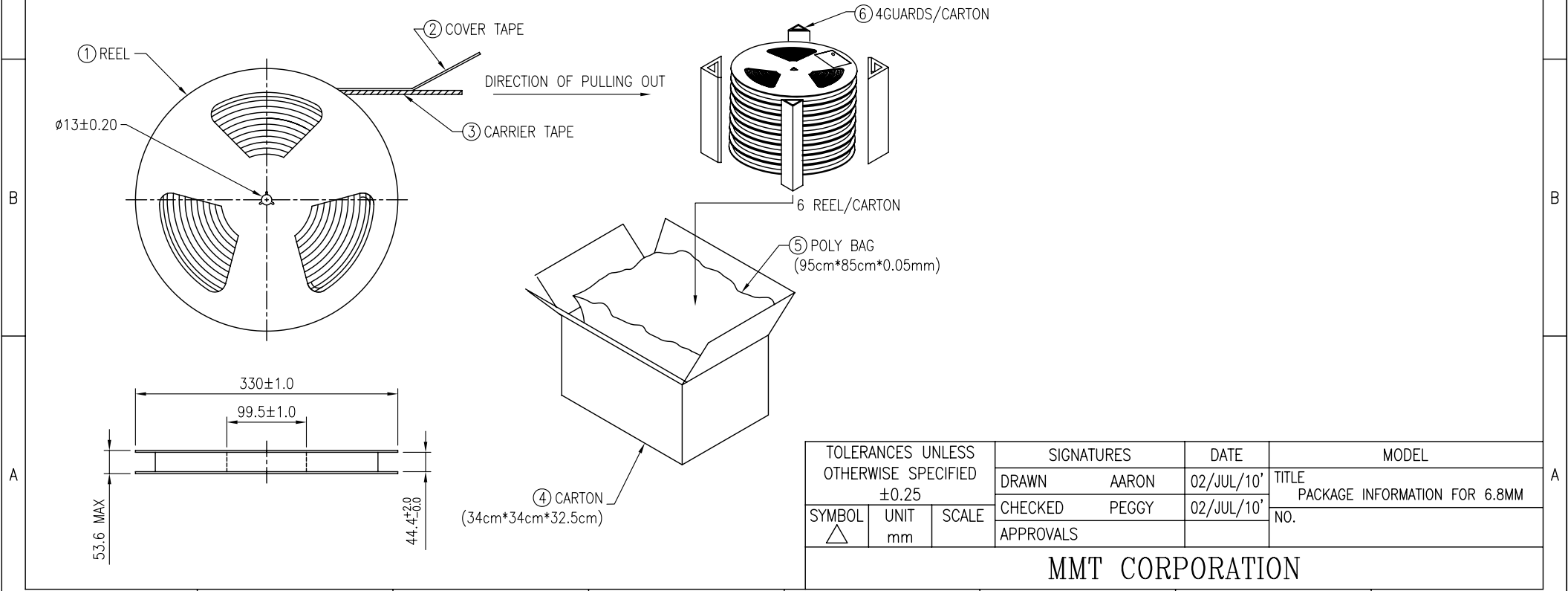
TOLERANCES UNLESS OTHERWISE SPECIFIED ±0.25			SIGNATURES	DATE	MODEL
SYMBOL	UNIT	SCALE	DRAWN AARON	02/JUL/10'	TITLE
△	mm		CHECKED PEGGY	02/JUL/10'	PACKAGE INFORMATION FOR 6.0MM
			APPROVALS		NO.

MMT CORPORATION

REVISIONS							
SYM	DESCRIPTION	DATE	APPROVED	SYM	DESCRIPTION	DATE	APPROVED
△				△			
△				△			
**CUSTOMER DRAWING FOR REFERENCE ONLY, SAMPLES APPROVAL ARE REQUIRED!!							020



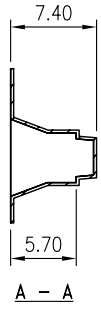
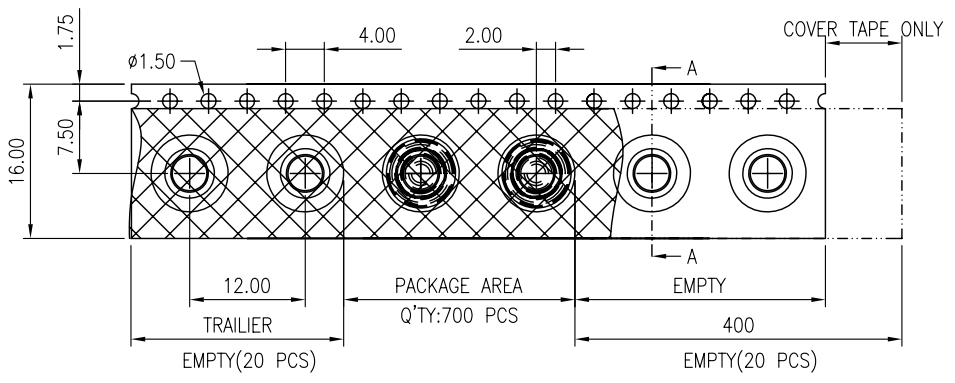
- MATERIAL:
1. REEL H=53.6 MAX.
  2. COVER W=37.5mm
  3. CARRIER TAPE W=44mm
  4. CARTON, CARTON/6 REEL/2700 PCS
  5. POLY BAG, 1 BAG/CARTON
  6. GUARD 4 GUARDS/CARTON



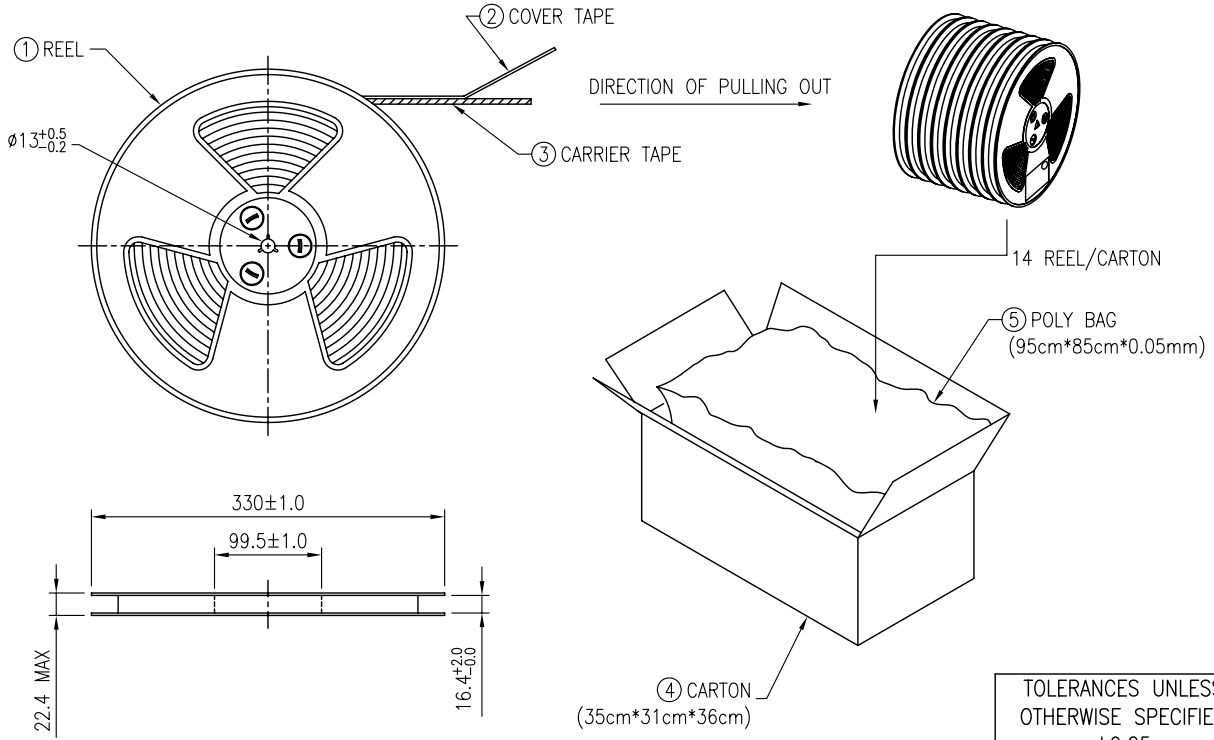
TOLERANCES UNLESS OTHERWISE SPECIFIED ±0.25			SIGNATURES		DATE	MODEL
SYMBOL △	UNIT mm	SCALE	DRAWN	AARON	02/JUL/10'	TITLE PACKAGE INFORMATION FOR 6.8MM NO.
			CHECKED	PEGGY	02/JUL/10'	
			APPROVALS			

MMT CORPORATION

REVISIONS							
SYM	DESCRIPTION	DATE	APPROVED	SYM	DESCRIPTION	DATE	APPROVED
△				△			
△				△			
**CUSTOMER DRAWING FOR REFERENCE ONLY, SAMPLES APPROVAL ARE REQUIRED!!							020



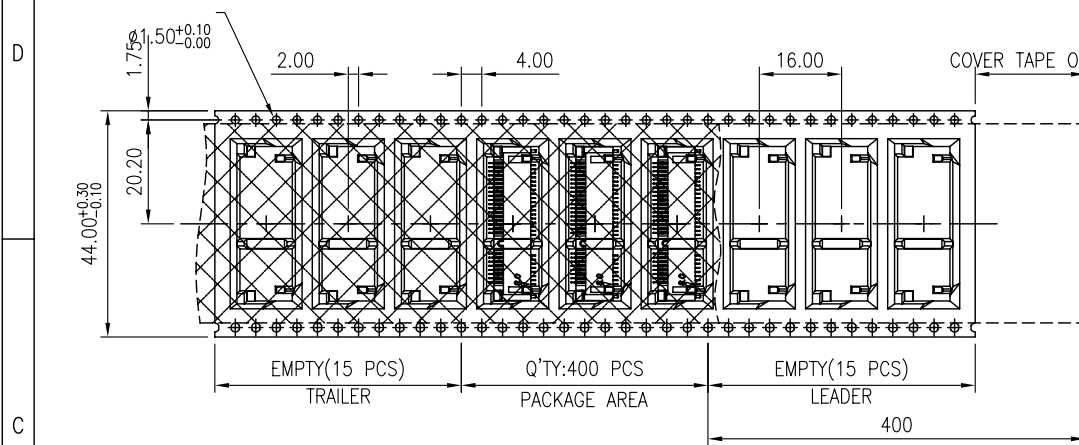
- MATERIAL:
1. REEL H=22.4 MAX.
  2. COVER W=13.3mm
  3. CARRIER TAPE W=16mm
  4. CARTON, CARTON/14 REEL/9800 PCS(ONE SET=TWO PIECES)
  5. POLY BAG, 1 BAG/CARTON
  6. SCREW, CARTON/9800PCS(ONE SET=TWO PIECES)



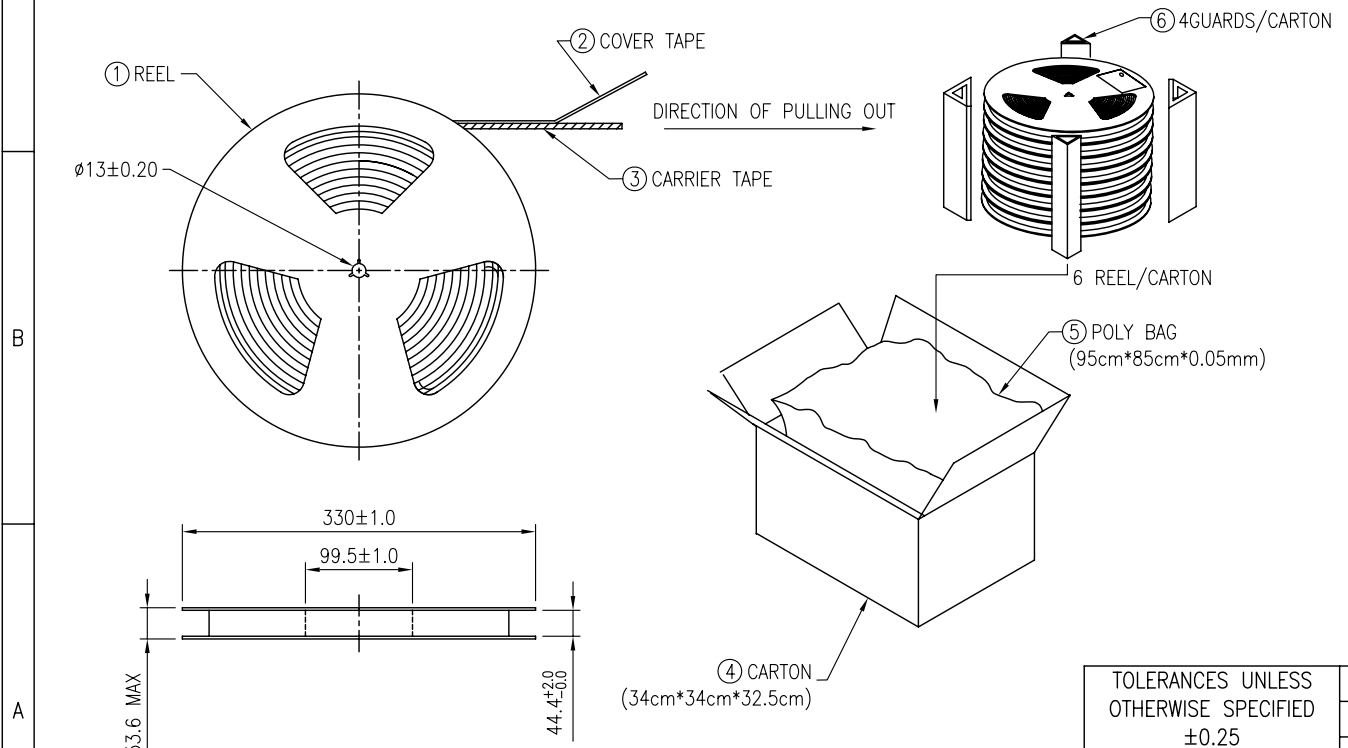
TOLERANCES UNLESS OTHERWISE SPECIFIED ±0.25			SIGNATURES	DATE	MODEL
SYMBOL	UNIT	SCALE	DRAWN AARON	02/JUL/10'	TITLE
△	mm		CHECKED PEGGY	02/JUL/10'	PACKAGE INFORMATION FOR 6.8MM
			APPROVALS		NO.

MMT CORPORATION

REVISIONS							
SYM	DESCRIPTION	DATE	APPROVED	SYM	DESCRIPTION	DATE	APPROVED
△				△			
△				△			
**CUSTOMER DRAWING FOR REFERENCE ONLY, SAMPLES APPROVAL ARE REQUIRED!!							020



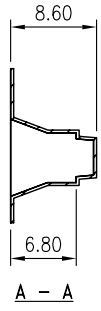
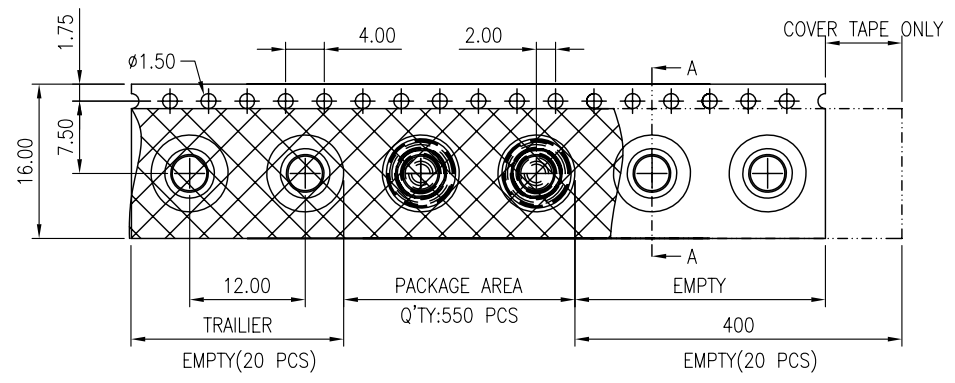
- MATERIAL:
1. REEL H=53.6 MAX.
  2. COVER W=37.5mm
  3. CARRIER TAPE W=44mm
  4. CARTON, CARTON/6 REEL/2400 PCS
  5. POLY BAG, 1 BAG/CARTON
  6. GUARD 4 GUARDS/CARTON



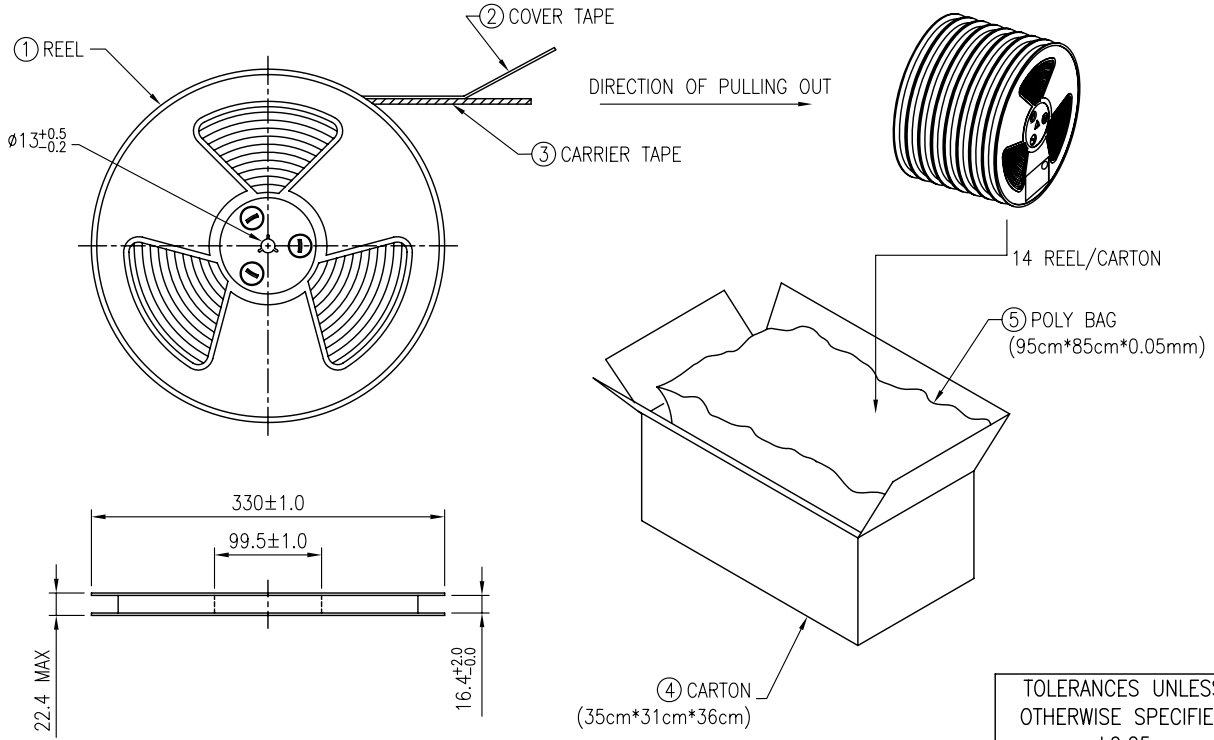
TOLERANCES UNLESS OTHERWISE SPECIFIED $\pm 0.25$			SIGNATURES		DATE	MODEL
SYMBOL	UNIT	SCALE	DRAWN	AARON	02/JUL/10'	TITLE
△	mm		CHECKED	PEGGY	02/JUL/10'	PACKAGE INFORMATION FOR 8.0MM
			APPROVALS			NO.

MMT CORPORATION

REVISIONS							
SYM	DESCRIPTION	DATE	APPROVED	SYM	DESCRIPTION	DATE	APPROVED
△				△			
△				△			
**CUSTOMER DRAWING FOR REFERENCE ONLY, SAMPLES APPROVAL ARE REQUIRED!!							020



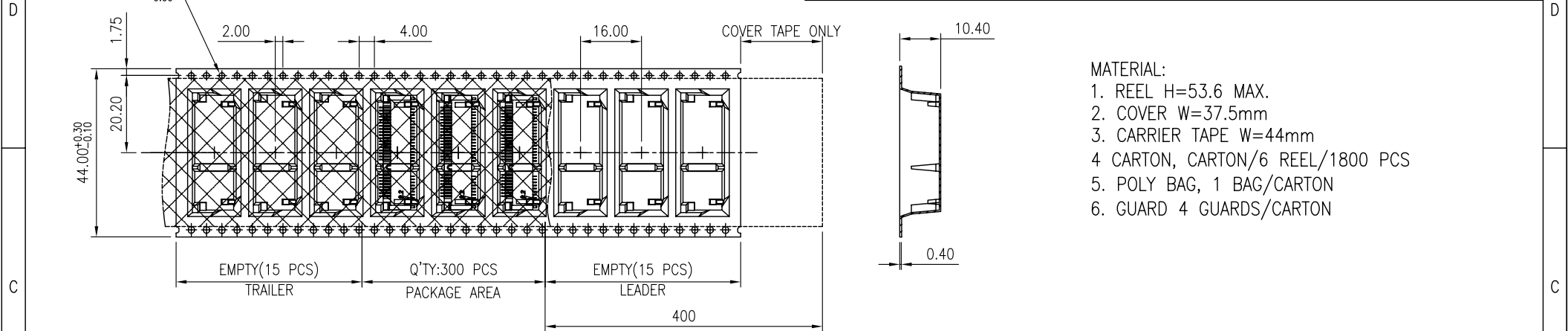
- MATERIAL:
1. REEL H=22.4 MAX.
  2. COVER W=13.3mm
  3. CARRIER TAPE W=16mm
  4. CARTON, CARTON/14 REEL/7700 PCS(ONE SET=TWO PIECES)
  5. POLY BAG, 1 BAG/CARTON
  6. SCREW, CARTON/7700PCS(ONE SET=TWO PIECES)



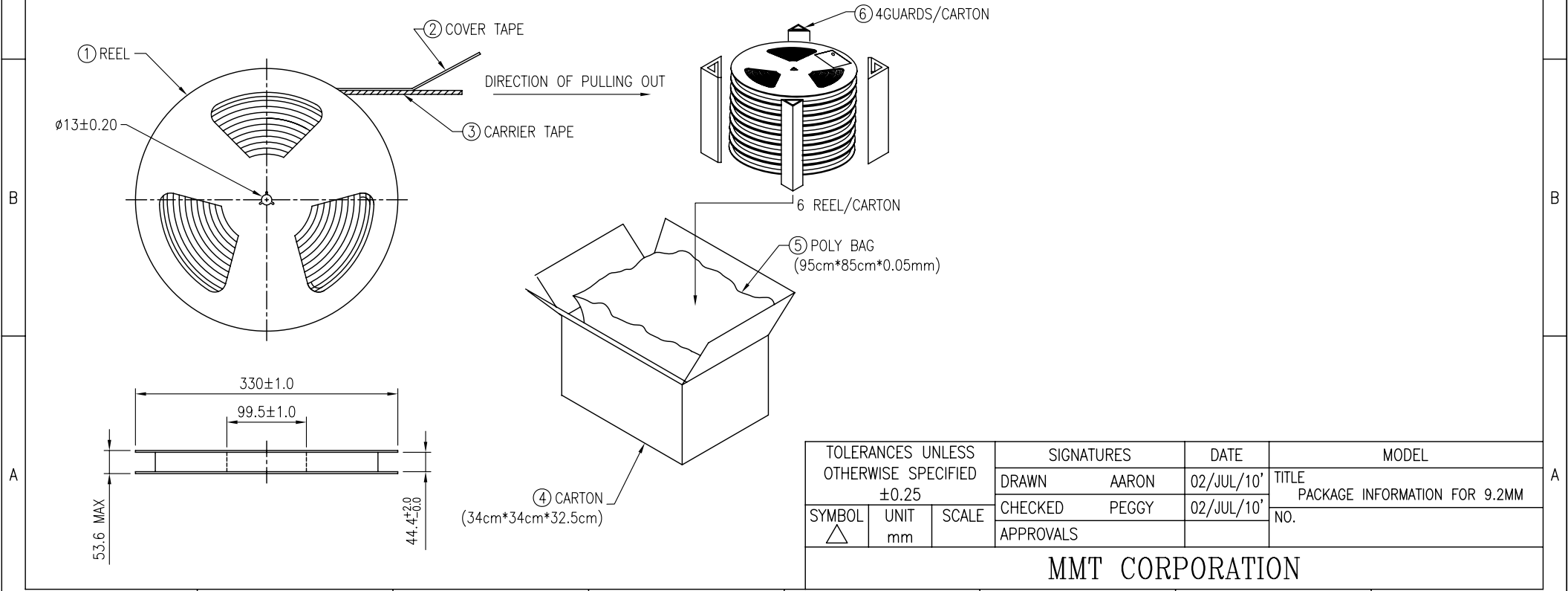
TOLERANCES UNLESS OTHERWISE SPECIFIED ±0.25			SIGNATURES		DATE	MODEL
SYMBOL	UNIT	SCALE	DRAWN	AARON	02/JUL/10'	TITLE
△	mm		CHECKED	PEGGY	02/JUL/10'	PACKAGE INFORMATION FOR 8.0MM
			APPROVALS			NO.

MMT CORPORATION

REVISIONS							
SYM	DESCRIPTION	DATE	APPROVED	SYM	DESCRIPTION	DATE	APPROVED
△				△			
△				△			
**CUSTOMER DRAWING FOR REFERENCE ONLY, SAMPLES APPROVAL ARE REQUIRED!!							020



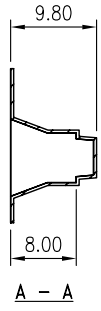
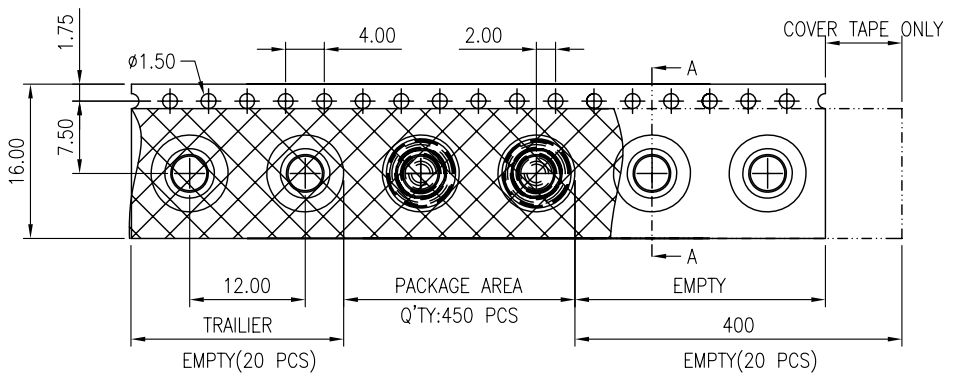
- MATERIAL:
1. REEL H=53.6 MAX.
  2. COVER W=37.5mm
  3. CARRIER TAPE W=44mm
  4. CARTON, CARTON/6 REEL/1800 PCS
  5. POLY BAG, 1 BAG/CARTON
  6. GUARD 4 GUARDS/CARTON



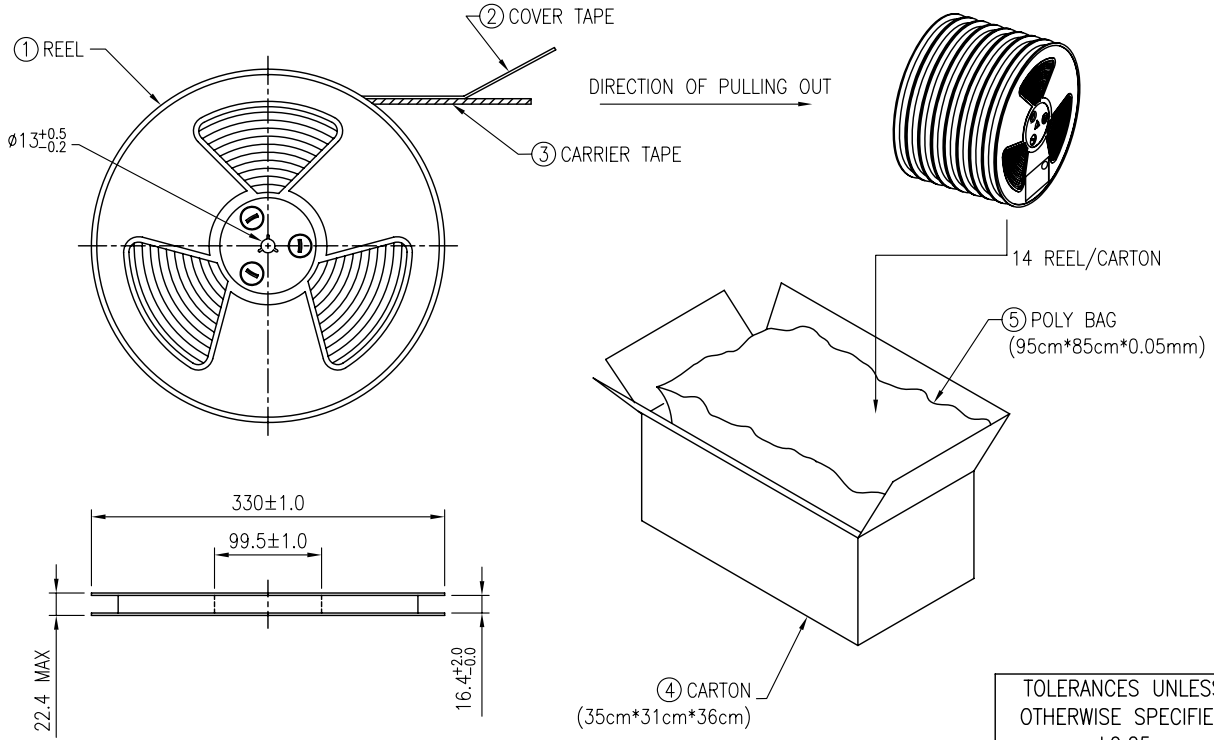
TOLERANCES UNLESS OTHERWISE SPECIFIED ±0.25			SIGNATURES	DATE	MODEL
SYMBOL	UNIT	SCALE	DRAWN AARON	02/JUL/10'	TITLE
△	mm		CHECKED PEGGY	02/JUL/10'	PACKAGE INFORMATION FOR 9.2MM
			APPROVALS		NO.

MMT CORPORATION

REVISIONS							
SYM	DESCRIPTION	DATE	APPROVED	SYM	DESCRIPTION	DATE	APPROVED
△				△			
△				△			
<b>**CUSTOMER DRAWING FOR REFERENCE ONLY, SAMPLES APPROVAL ARE REQUIRED!!</b>							020



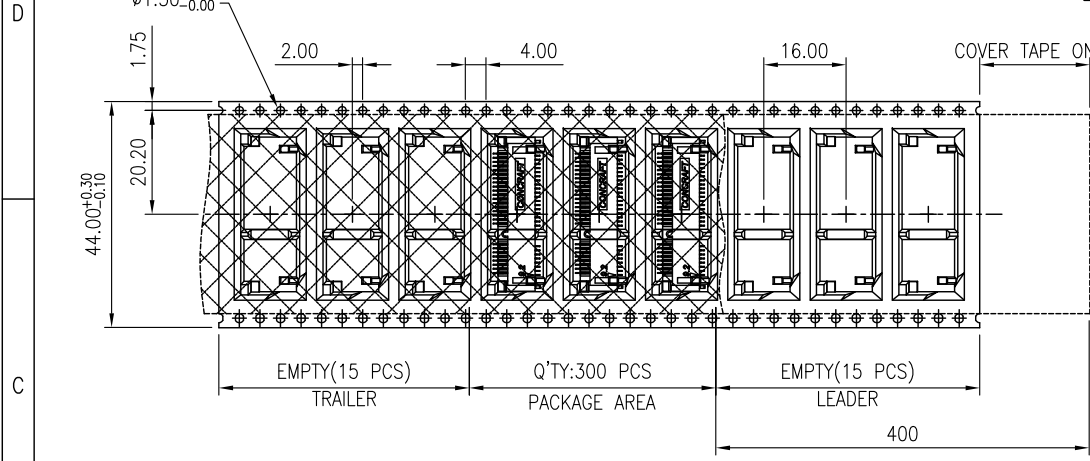
- MATERIAL:**
1. REEL H=22.4 MAX.
  2. COVER W=13.3mm
  3. CARRIER TAPE W=16mm
  4. CARTON, CARTON/14 REEL/6300 PCS(ONE SET=TWO PIECES)
  5. POLY BAG, 1 BAG/CARTON
  6. SCREW, CARTON/6300PCS(ONE SET=TWO PIECES)



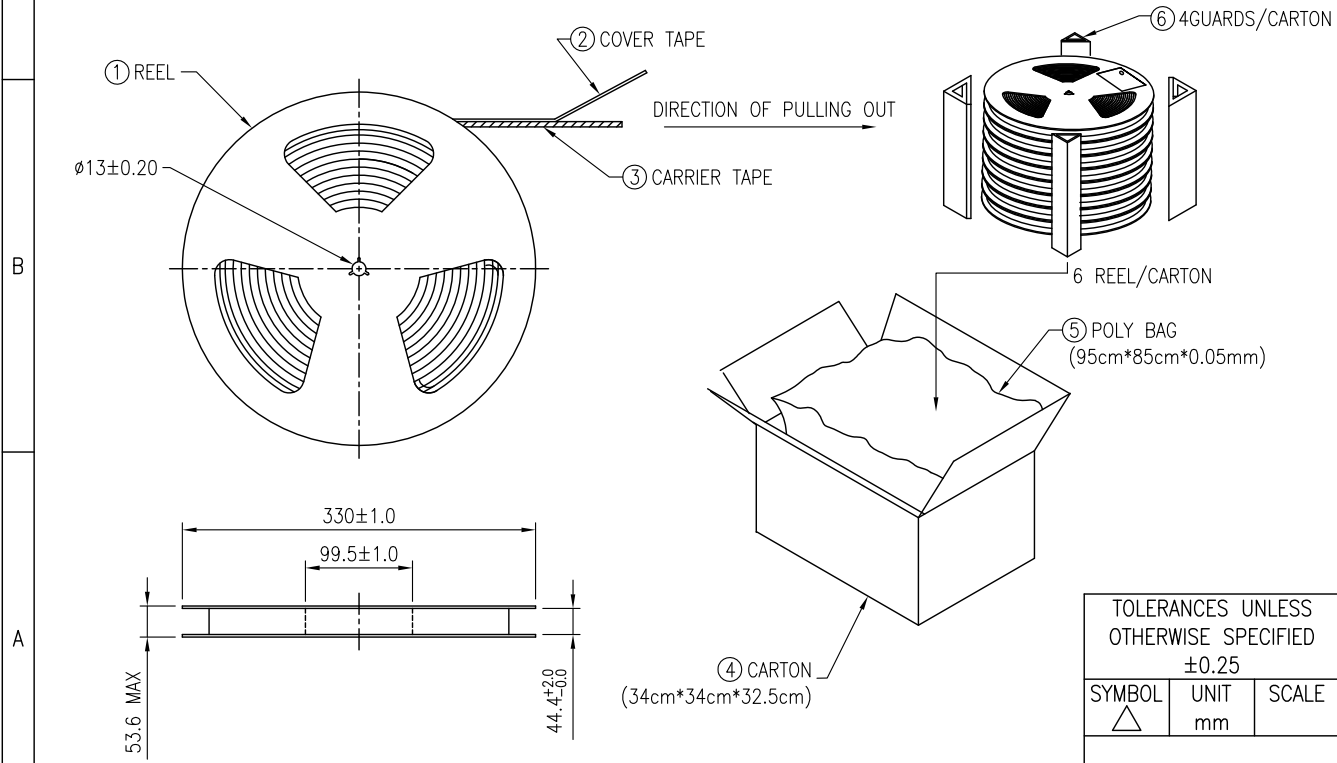
TOLERANCES UNLESS OTHERWISE SPECIFIED ±0.25			SIGNATURES		DATE	MODEL
SYMBOL	UNIT	SCALE	DRAWN	AARON	02/JUL/10'	TITLE
△	mm		CHECKED	PEGGY	02/JUL/10'	PACKAGE INFORMATION FOR 9.2MM
			APPROVALS			NO.

**MMT CORPORATION**

REVISIONS							
SYM	DESCRIPTION	DATE	APPROVED	SYM	DESCRIPTION	DATE	APPROVED
△				△			
△				△			
**CUSTOMER DRAWING FOR REFERENCE ONLY, SAMPLES APPROVAL ARE REQUIRED!!							020



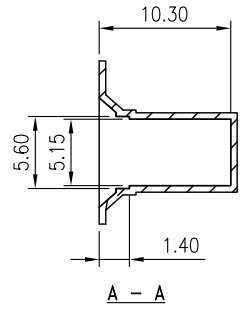
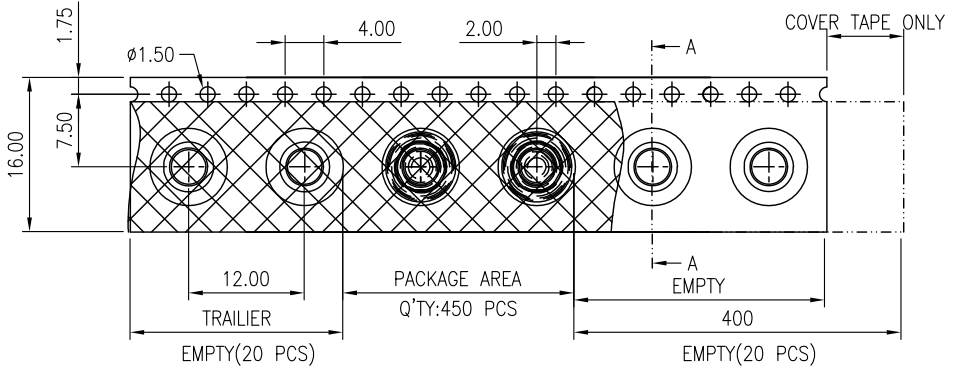
- MATERIAL:
1. REEL H=53.6 MAX.
  2. COVER W=37.5mm
  3. CARRIER TAPE W=44mm
  4. CARTON, CARTON/6 REEL/1800 PCS
  5. POLY BAG, 1 BAG/CARTON
  6. GUARD 4 GUARDS/CARTON



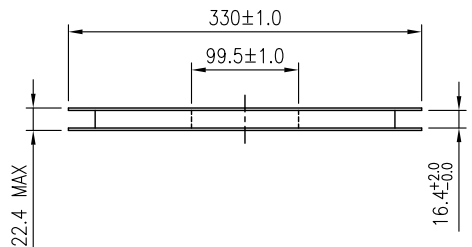
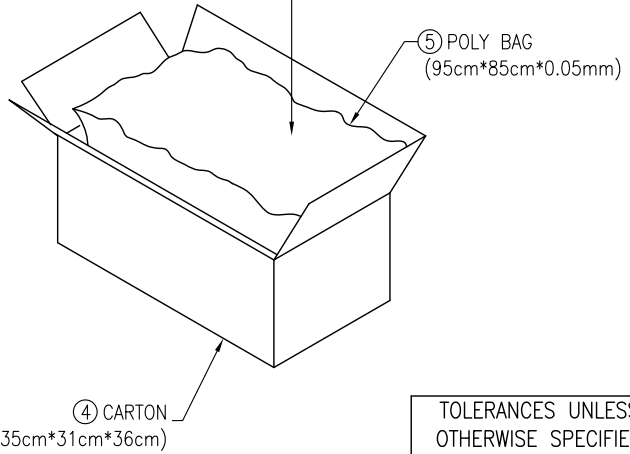
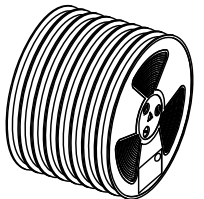
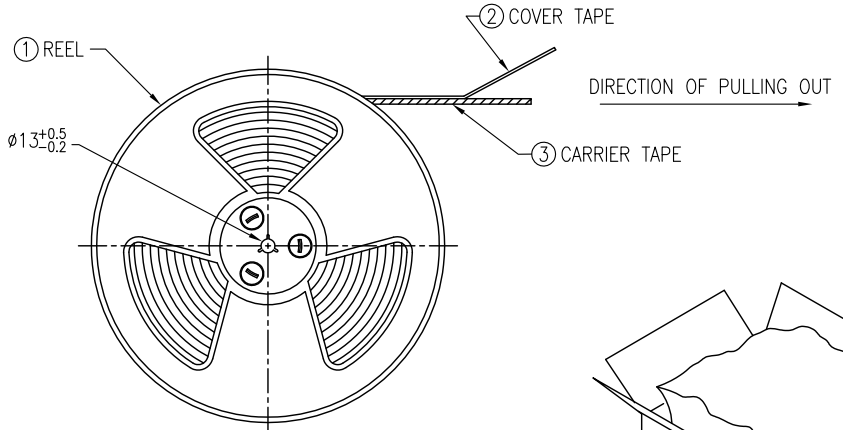
TOLERANCES UNLESS OTHERWISE SPECIFIED ±0.25			SIGNATURES		DATE		MODEL	
SYMBOL	UNIT	SCALE	DRAWN	AARON	19/NOV/10'	TITLE		
			CHECKED	PEGGY	19/NOV/10'	PACKAGE INFORMATION FOR 9.9MM		
			APPROVALS			NO.		

MMT CORPORATION

REVISIONS							
SYM	DESCRIPTION	DATE	APPROVED	SYM	DESCRIPTION	DATE	APPROVED
△				△			
△				△			
**CUSTOMER DRAWING FOR REFERENCE ONLY, SAMPLES APPROVAL ARE REQUIRED!!							020



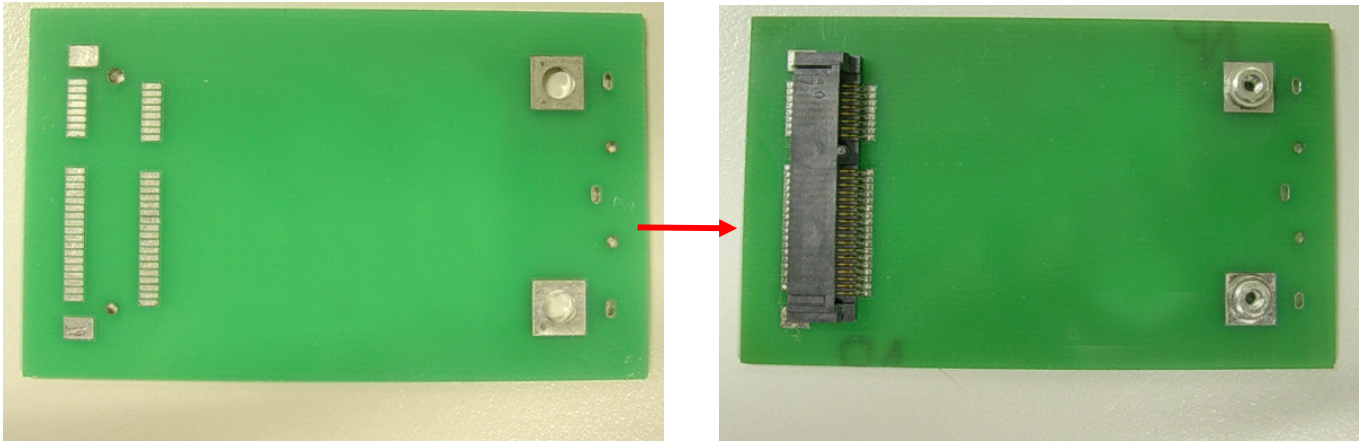
- MATERIAL:
1. REEL H=22.4 MAX.
  2. COVER W=13.3mm
  3. CARRIER TAPE W=16mm
  4. CARTON, CARTON/14 REEL/6300 PCS(ONE SET=TWO PIECES)
  5. POLY BAG, 1 BAG/CARTON
  6. SCREW, CARTON/6300PCS(ONE SET=TWO PIECES)



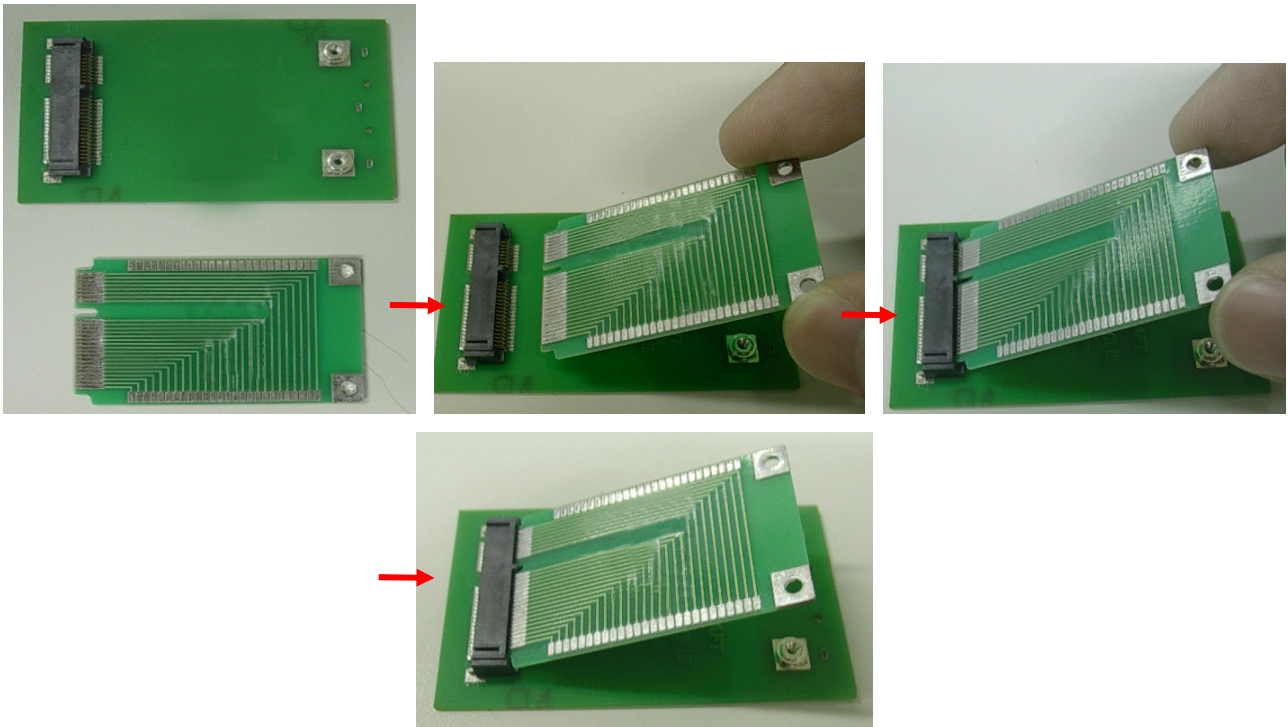
TOLERANCES UNLESS OTHERWISE SPECIFIED ±0.25			SIGNATURES		DATE	MODEL
SYMBOL	UNIT	SCALE	DRAWN	AARON	19/NOV/10'	TITLE
			CHECKED	PEGGY	19/NOV/10'	PACKAGE INFORMATION FOR 9.9MM
			APPROVALS			NO.
MMT CORPORATION						

## INSTALLATION STEP OF MINI PCI EXPRESS CONN. :

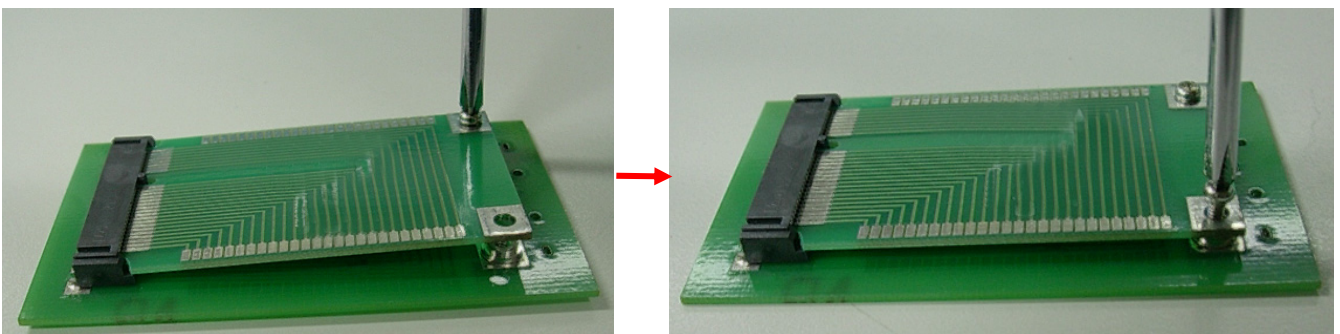
STEP1: Put the connector and hardware on PCB. Then, two parts will be soldered through wave.



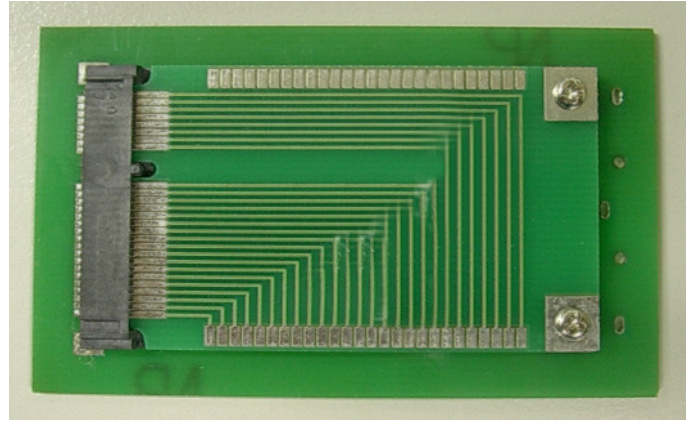
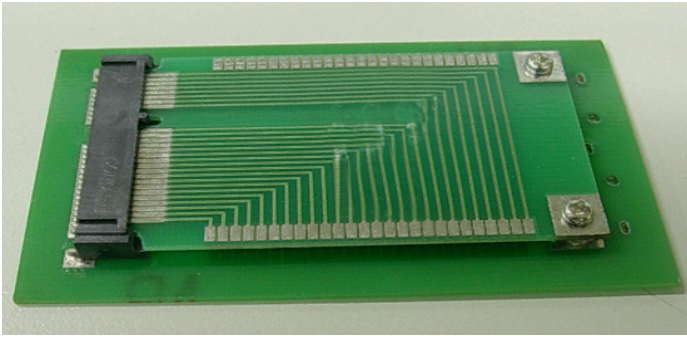
STEP2: The Module needs to be installed between with connector and hardware as picture.



STEP3: Using screws to lock module on hardware.



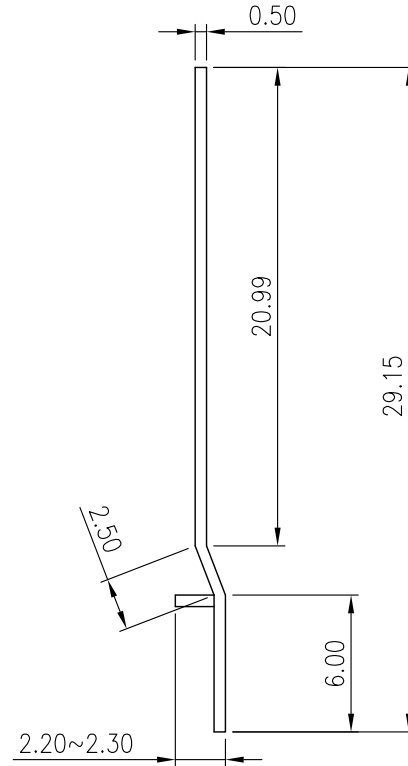
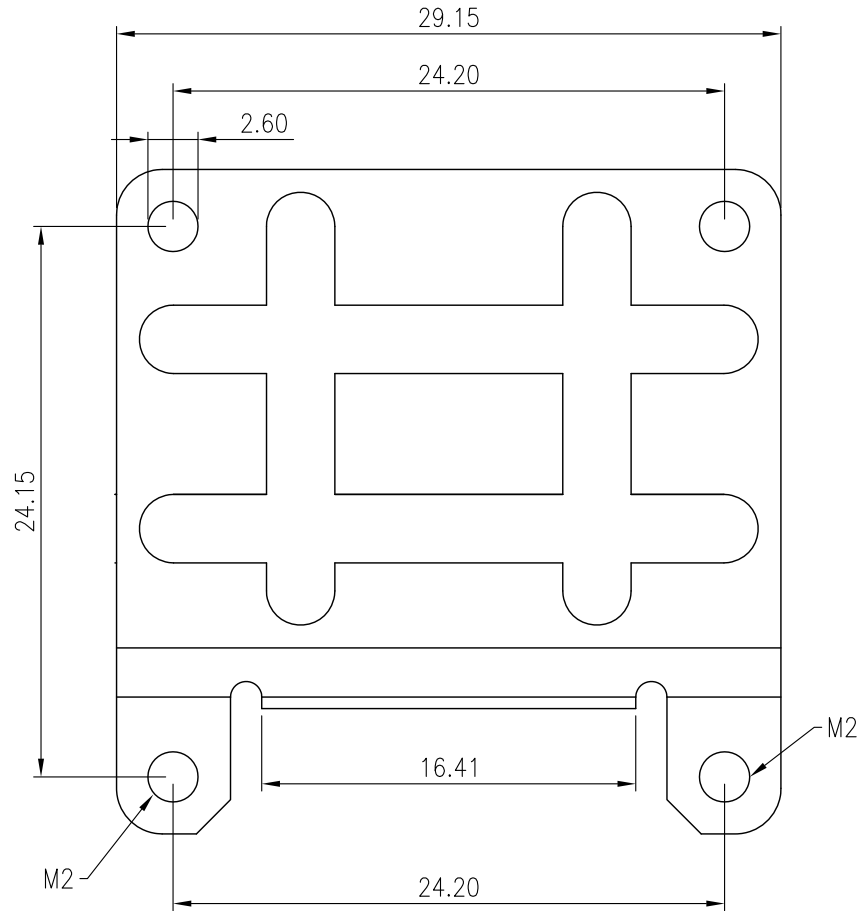
STEP4: Finished



V1.1 NOTE: THIS DEVICE IS ROHS COMPLIANT.

REVISIONS							
SYM	DESCRIPTION	DATE	APPROVED	SYM	DESCRIPTION	DATE	APPROVED
△				△			
△				△			
**CUSTOMER DRAWING FOR REFERENCE ONLY, SAMPLES APPROVAL ARE REQUIRED!!							000

Related Product



TOLERANCES UNLESS OTHERWISE SPECIFIED ±0.25			SIGNATURES		DATE	MODEL
			DRAWN	SAM	23/OCT/13'	TITLE
			CHECKED	AARON	23/OCT/13'	MINI-PCIE HALF CARD EXTENDER
			APPROVALS			NO. MINIPCIE_EXTENDER_01
MMT CORPORATION						