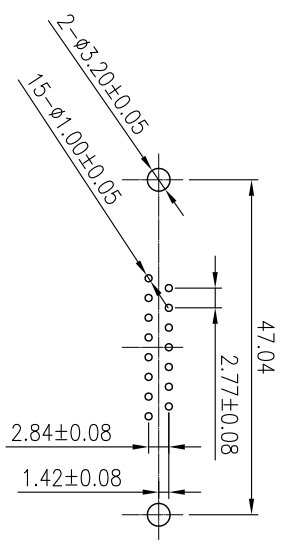
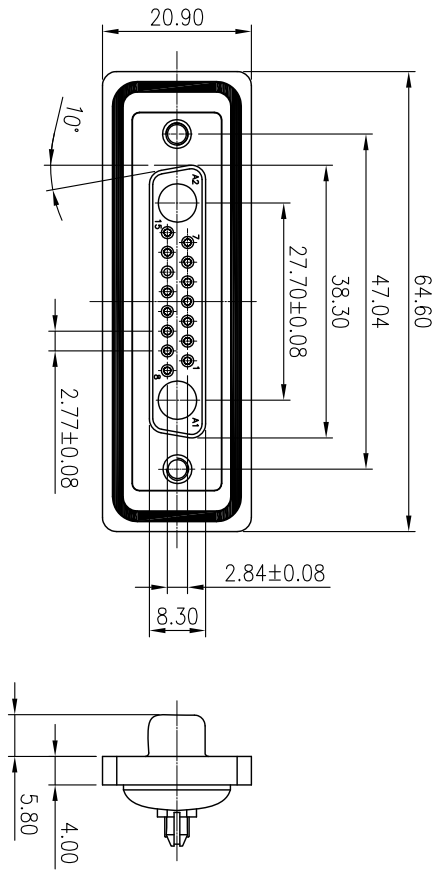
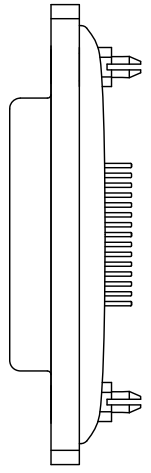


8 7 6 5 4 3 2 1  
 VI.1 NOTE: THIS DEVICE IS ROHS COMPLIANT.



P.C.B LAYOUT(COMPONENT SIDE REF.)(T=1.60mm)

		REVISIONS					
SYM	DESCRIPTION	DATE	APPROVED	SYM	DESCRIPTION	DATE	APPROVED
Δ				Δ			
Δ				Δ			
**CUSTOMER DRAWING FOR REFERENCE ONLY, SAMPLES APPROVAL ARE REQUIRED!!							351

**MATERIALS**  
 CONTACTS: BRASS  
 INSULATOR: PBT, UL94V-0 RATED  
 SHELL: COLD ROLLER STEEL  
 METAL: WATERTIGHT FRAME: PBT GF UL94V-0  
 O-RING: SILICONE  
 EPOXY SEALANT: EPOXY  
 WATERPROOF RATE: IP67

**ELECTRICAL CHARACTERISTICS**  
 CONTACT CURRENT RATING: 3 AMPS  
 DIELECTRIC WITHSTANDING VOLTAGE: AC 1000V r.m.s  
 INSULATION RESISTANCE: 500MΩ MIN AT DC 500V  
 CONTACT RESISTANCE: 25mΩ MAX.  
 OPERATING TEMPERATURE: -55°C~+105°C  
 IMPEDANCE DATE: 75Ω

**ORDER INFORMATION:**  
 WCDB950-PF17W2GX  
 WCDB: WATERPROOF COMBO D-SUB CONNECTOR  
 950: SERIES NO. STRAIGHT DIP TYPE  
 P: TERMINAL TYPE, PCB TYPE, STRAIGHT  
 F: FEMALE  
 17W2: CONTACT ARRANGMENT, 17 PINS 2 COAXIAL  
 GX: PLATING OPTION  
 Gf: GOLD FLASH  
 G15: 15u" GOLD PLATED  
 G30: 30u" GOLD PLATED

TOLERANCES UNLESS OTHERWISE SPECIFIED		SIGNATURES		DATE		MODEL	
SYMBOL	UNIT	SCALE	CHECKED	APPROVALS	NO.	TITLE	
Δ	mm	1/1	PEGGY		09/DEC/10'	WATERPROOF COMBO D-SUB	
						WCDB950-PF17W2G_	

MMT CORPORATION