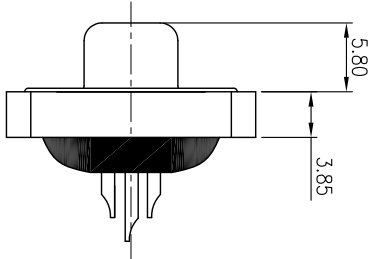
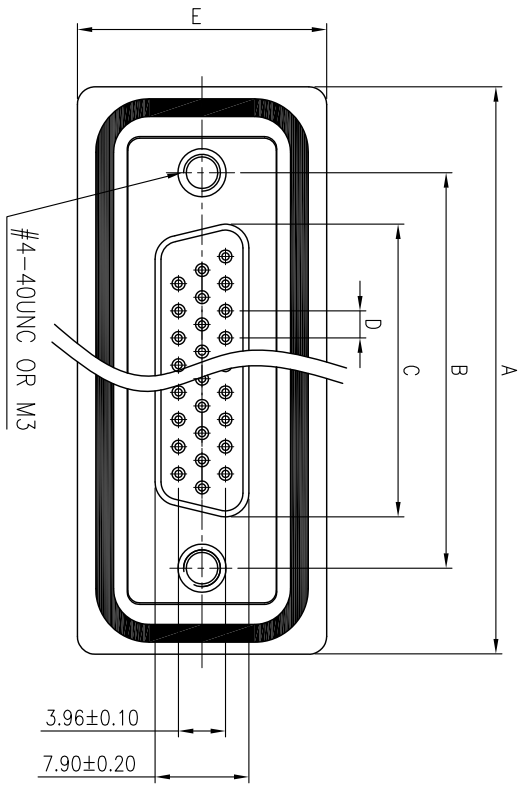
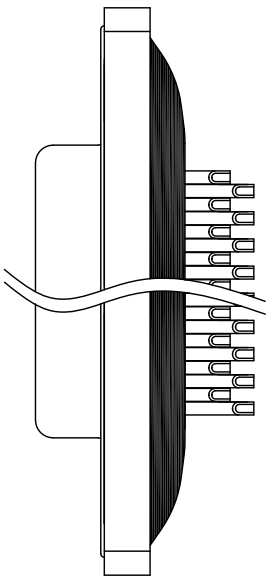


8 7 6 5 4 3 2 1
 VI.1 NOTE: THIS DEVICE IS ROHS COMPLIANT.



REVISIONS				
SYM	DESCRIPTION	DATE	APPROVED	SYM
Δ				Δ
Δ				Δ

****CUSTOMER DRAWING FOR REFERENCE ONLY, SAMPLES APPROVAL ARE REQUIRED!!**

DESCRIPTION	DATE	APPROVED

351

MATERIALS AND FINISH
 SHELL: STEEL MATERIAL TIN FINISHED
 INSULATOR: PBT GF,UL 94V-0, BLACK COLOR
 SIGNAL CONTACT: COPPER ALLOY, GOLD FLASH
 METAL WATERTIGHT FRAME: PBT GF,UL 94V-0, BLACK COLOR
 O-RING: SILICONE
 EPOXY SEALANT: EPOXY

ELECTRICAL CHARACTERISTICS
 SIGNAL CONTACT CURRENT RATING: 3.0 AMPS
 SIGNAL CONTACT RESISTANCE: 10mΩ MAX
 DIELECTRIC WITHSTANDING VOLTAGE: 1000V FOR 1 MINUTE
 INSULATION RESISTANCE: 500MΩ MIN
 TEMPERATURE RATING: -55C~+105C
 DEGREE OF PROTECTION: IP67 ACCORDING TO IEC60529

ORDER INFORMATION:
 WHDB930-ScFXXGX-XK
 WDB: WATERPROOF D-SUB CONNECTOR
 930: SERIES NO.
 Sc: SOLDER TYPE
 F: FEMALE
 XX: NO. OF CONTACTS
 GX: CONTACT PLATING OPTION
 GF: GOLD FLASH ON CONTACT
 G10: 10u" GOLD ON CONTACT
 G15: 15u" GOLD ON CONTACT
 G30: 30u" GOLD ON CONTACT
 X: FLANGE MOUNTING OPTION
 0: #4-40 THREAD HOLE
 1: #4-40 THREAD HOLE WITH #4-40UNC SCREWLOCK
 M3: M3 THREAD HOLE
 K: INSULATOR COLOR, BLACK

PART NO	No. of Contact	A±0.25	B±0.25	C±0.25	D±0.25	E±0.25
WHDB930-ScF15GX-XK	15	39.50	25.00	16.30	2.29	21.00
WHDB930-ScF26GX-XK	26	48.00	33.30	24.60	2.29	21.00
WHDB930-ScF44GX-XK	44	61.50	47.05	38.30	2.29	21.00
WHDB930-ScF62GX-XK	62	77.80	63.50	54.80	2.41	21.00

TOLERANCES UNLESS OTHERWISE SPECIFIED ±0.25		SIGNATURES		DATE		MODEL	
DRAWN	AARON	CHECKED	PEGGY	18/JUL/11'	18/JUL/11'	HD D-SUB WATERPROOF CONN.	
SYMBOL	UNIT	SCALE	APPROVALS			NO.	
Δ	mm	2/1				WHDB930-ScF__G__-__K	

MMT CORPORATION