

Antenna

WLAN ANTENNA

MODEL NAME **WAS001-000316B-S15**

FREQUENCY	2.4~2.5GHz
GAIN	5dBi
VSWR	2
POLARIZATION	Linear Vertical
PATTERN TYPE	Omni-directional
IMPEDANCE	50 ohms
POWER RATING	2 W
CONNECTOR	RP SMA Plug
COAXIAL CABLE	RG316
OUTSIDE CABLE LENGTH	None
COLOR	Black
ANTENNA LENGTH	195mm



MODEL NAME **WAS001-000316B-S16**

FREQUENCY	2.4~2.5GHz
GAIN	5.5dBi
VSWR	2
POLARIZATION	Linear Vertical
PATTERN TYPE	Omni-directional
IMPEDANCE	50 ohms
POWER RATING	2 W
CONNECTOR	RP SMA Plug
COAXIAL CABLE	RG316
OUTSIDE CABLE LENGTH	None
COLOR	Black
ANTENNA LENGTH	195mm



MODEL NAME **WAS001-000178B -T15**

FREQUENCY	2.4~2.5GHz
GAIN	5.0dBi
VSWR	2
POLARIZATION	Linear Vertical
PATTERN TYPE	Omni-directional
IMPEDANCE	50 ohms
POWER RATING	2 W
CONNECTOR	RP TNC Plug
COAXIAL CABLE	RG178
OUTSIDE CABLE LENGTH	None
COLOR	Black
ANTENNA LENGTH	202mm



NOTE: SOME SIZES, STYLES AND OPTIONS ARE NON-STANDARD, NON-CANCELLABLE AND NON-RETURNABLE.

WLAN ANTENNA

MODEL NAME **WAS002-000178B-S12**

FREQUENCY	2.4~2.5GHz
GAIN	1.5dBi
VSWR	2
POLARIZATION	Linear Vertical
PATTERN TYPE	Omni-directional
IMPEDANCE	50 ohms
POWER RATING	2 W
CONNECTOR	RP SMA Plug
COAXIAL CABLE	RG178
OUTSIDE CABLE LENGTH	None
COLOR	Black
ANTENNA LENGTH	109mm



MODEL NAME **WAS002-000178W-S12**

FREQUENCY	2.4~2.5GHz
GAIN	2dBi
VSWR	2
POLARIZATION	Linear Vertical
PATTERN TYPE	Omni-directional
IMPEDANCE	50 ohms
POWER RATING	2 W
CONNECTOR	RP SMA Plug
COAXIAL CABLE	RG178
OUTSIDE CABLE LENGTH	None
COLOR	White
ANTENNA LENGTH	109mm



MODEL NAME **WAD002-000178B-S13**

FREQUENCY	2.4~2.5GHz/4.9~5.85GHz
GAIN	2dBi/2.5dBi
VSWR	2
POLARIZATION	Linear Vertical
PATTERN TYPE	Omni-directional
IMPEDANCE	50 ohms
POWER RATING	2 W
CONNECTOR	RP SMA Plug
COAXIAL CABLE	RG178
OUTSIDE CABLE LENGTH	None
COLOR	Black
ANTENNA LENGTH	109mm



NOTE: SOME SIZES, STYLES AND OPTIONS ARE NON-STANDARD, NON-CANCELLABLE AND NON-RETURNABLE.

WLAN ANTENNA

MODEL NAME **WAD002-000178W-S13**

FREQUENCY	2.4~2.5GHz/4.9~5.85GHz
GAIN	2dBi/2.5dBi
VSWR	2
POLARIZATION	Linear Vertical
PATTERN TYPE	Omni-directional
IMPEDANCE	50 ohms
POWER RATING	2 W
CONNECTOR	RP SMA Plug
COAXIAL CABLE	RG178
OUTSIDE CABLE LENGTH	None
COLOR	White
ANTENNA LENGTH	109mm



MODEL NAME **WAS003-000178B-S13**

FREQUENCY	2.4~2.5GHz
GAIN	3dBi
VSWR	2
POLARIZATION	Linear Vertical
PATTERN TYPE	Omni-directional
IMPEDANCE	50 ohms
POWER RATING	2 W
CONNECTOR	RP SMA Plug
COAXIAL CABLE	RG178
OUTSIDE CABLE LENGTH	None
COLOR	Black
ANTENNA LENGTH	156mm



MODEL NAME **WAD003-000178B-S15**

FREQUENCY	2.4~2.5GHz/4.9~5.85GHz
GAIN	1.56dBi/4.43dBi
VSWR	2
POLARIZATION	Linear Vertical
PATTERN TYPE	Omni-directional
IMPEDANCE	50 ohms
POWER RATING	2 W
CONNECTOR	RP SMA Plug
COAXIAL CABLE	RG178
OUTSIDE CABLE LENGTH	None
COLOR	Black
ANTENNA LENGTH	156mm



NOTE: SOME SIZES, STYLES AND OPTIONS ARE NON-STANDARD, NON-CANCELLABLE AND NON-RETURNABLE.

WLAN ANTENNA

MODEL NAME **WAS004-000137B-S12**

FREQUENCY	2.4~2.5GHz
GAIN	1.5dBi
VSWR	2
POLARIZATION	Linear Vertical
PATTERN TYPE	Omni-directional
IMPEDANCE	50 ohms
POWER RATING	2 W
CONNECTOR	RP SMA Plug
COAXIAL CABLE	ø1.37mm
OUTSIDE CABLE LENGTH	None
COLOR	Black
ANTENNA LENGTH	84mm



MODEL NAME **WAS005-000137B-S12**

FREQUENCY	2.4~2.5GHz
GAIN	1.5dBi
VSWR	2
POLARIZATION	Linear Vertical
PATTERN TYPE	Omni-directional
IMPEDANCE	50 ohms
POWER RATING	2 W
CONNECTOR	RP SMA Plug
COAXIAL CABLE	ø1.37mm
OUTSIDE CABLE LENGTH	None
COLOR	Black
ANTENNA LENGTH	78mm



MODEL NAME **WAS005-000137W-S12**

FREQUENCY	2.4~2.5GHz
GAIN	1.5dBi
VSWR	2
POLARIZATION	Linear Vertical
PATTERN TYPE	Omni-directional
IMPEDANCE	50 ohms
POWER RATING	2 W
CONNECTOR	RP SMA Plug
COAXIAL CABLE	ø1.37mm
OUTSIDE CABLE LENGTH	None
COLOR	White
ANTENNA LENGTH	78mm



NOTE: SOME SIZES, STYLES AND OPTIONS ARE NON-STANDARD, NON-CANCELLABLE AND NON-RETURNABLE.

WLAN ANTENNA

MODEL NAME **WAS006-000137W-S12**

FREQUENCY	2.4~2.5GHz
GAIN	1.5dBi
VSWR	2
POLARIZATION	Linear Vertical
PATTERN TYPE	Omni-directional
IMPEDANCE	50 ohms
POWER RATING	2 W
CONNECTOR	RP SMA Plug
COAXIAL CABLE	ø1.37mm
OUTSIDE CABLE LENGTH	None
COLOR	White
ANTENNA LENGTH	74mm



MODEL NAME **WAD007-000137B-S15**

FREQUENCY	2.4~2.5GHz/5.15~5.875GHz
GAIN	3dBi/5dBi
VSWR	2
POLARIZATION	Linear Vertical
PATTERN TYPE	Omni-directional
IMPEDANCE	50 ohms
POWER RATING	2 W
CONNECTOR	RP SMA Plug
COAXIAL CABLE	ø1.37mm
OUTSIDE CABLE LENGTH	None
COLOR	Black
ANTENNA LENGTH	151mm



MODEL NAME **WAD007-000137G-S15**

FREQUENCY	2.4~2.5GHz/5.15~5.875GHz
GAIN	3dBi/5dBi
VSWR	2
POLARIZATION	Linear Vertical
PATTERN TYPE	Omni-directional
IMPEDANCE	50 ohms
POWER RATING	2 W
CONNECTOR	RP SMA Plug
COAXIAL CABLE	ø1.37mm
OUTSIDE CABLE LENGTH	None
COLOR	Gool Gray 1C
ANTENNA LENGTH	151mm



NOTE: SOME SIZES, STYLES AND OPTIONS ARE NON-STANDARD, NON-CANCELLABLE AND NON-RETURNABLE.

WLAN ANTENNA

MODEL NAME **WAS008-200137B-I02**

FREQUENCY	2.4~2.5GHz
GAIN	2dBi
VSWR	2
POLARIZATION	Linear Vertical
PATTERN TYPE	Omni-directional
IMPEDANCE	50 ohms
POWER RATING	2 W
CONNECTOR	I-PEX Plug
COAXIAL CABLE	ø1.37mm
OUTSIDE CABLE LENGTH	200mm
COLOR	Black
ANTENNA LENGTH	106mm



MODEL NAME **WAD008-050137B-I03**

FREQUENCY	2.4~2.5GHz/4.9~5.85GHz
GAIN	2dBi/2.5dBi
VSWR	2
POLARIZATION	Linear Vertical
PATTERN TYPE	Omni-directional
IMPEDANCE	50 ohms
POWER RATING	2 W
CONNECTOR	I-PEX Plug
COAXIAL CABLE	ø1.37mm
OUTSIDE CABLE LENGTH	50mm
COLOR	Black
ANTENNA LENGTH	106mm



MODEL NAME **WAD009-060113G-I05**

FREQUENCY	2.4~2.5GHz/5.15~5.875GHz
GAIN	2dBi/5dBi
VSWR	2
POLARIZATION	Linear Vertical
PATTERN TYPE	Omni-directional
IMPEDANCE	50 ohms
POWER RATING	2 W
CONNECTOR	I-PEX Plug
COAXIAL CABLE	ø1.13mm
OUTSIDE CABLE LENGTH	60mm
COLOR	Cool Gray 1C
ANTENNA LENGTH	200mm



NOTE: SOME SIZES, STYLES AND OPTIONS ARE NON-STANDARD, NON-CANCELLABLE AND NON-RETURNABLE.

WLAN ANTENNA WITH MOUNT

MODEL NAME **WAMS001-3M0174B-S05**

FREQUENCY	2.4~2.5GHz
GAIN	5dBi
VSWR	2
POLARIZATION	Linear Vertical
PATTERN TYPE	Omni-directional
IMPEDANCE	50 ohms
POWER RATING	2 W
CONNECTOR	SMA Plug
COAXIAL CABLE	RG174
OUTSIDE CABLE LENGTH	3000mm
COLOR	Black
ANTENNA LENGTH	150mm



MODEL NAME **WAMS002-1M0316B-S15**

FREQUENCY	2.4~2.5GHz
GAIN	4.3dBi
VSWR	2
POLARIZATION	Linear Vertical
PATTERN TYPE	Omni-directional
IMPEDANCE	50 ohms
POWER RATING	2 W
CONNECTOR	RP SMA Plug
COAXIAL CABLE	RG316
OUTSIDE CABLE LENGTH	1000mm
COLOR	Black
ANTENNA LENGTH	205mm



NOTE: SOME SIZES, STYLES AND OPTIONS ARE NON-STANDARD, NON-CANCELLABLE AND NON-RETURNABLE.

MOUNTS

MODEL NAME *MS3-2M0174B-S1*

CONNECTOR	RP SMA Jack to RP SMA Plug
POWER RATING	2 W
IMPEDANCE	50 ohms
COAXIAL CABLE	RG174
CABLE LENGTH	2000mm
COLOR	BLACK



MODEL NAME *MS3-2M0174B-S1W*

CONNECTOR	RP SMA Jack to RP SMA Plug
POWER RATING	2 W
IMPEDANCE	50 ohms
COAXIAL CABLE	RG174
CABLE LENGTH	2000mm
COLOR	BLACK (Waterproof)



MODEL NAME *MS2-750174B-S0*

CONNECTOR	SMA Jack to SMA Plug
POWER RATING	2 W
IMPEDANCE	50 ohms
COAXIAL CABLE	RG174
CABLE LENGTH	750mm
COLOR	BLACK



NOTE: SOME SIZES, STYLES AND OPTIONS ARE NON-STANDARD, NON-CANCELLABLE AND NON-RETURNABLE.

GSM ANTENNA

MODEL NAME *AM001-0918174B-S03-2490*

FREQUENCY 900~1800MHz
GAIN 1.5dBi @ 900MHz
 3.0dBi @ 1800MHz
VSWR <2
POLARIZATION Linear Vertical
IMPEDANCE 50 ohms
POWER RATING 2 W
CONNECTOR SMA Plug
COAXIAL CABLE RG174
OUTSIDE CABLE LENGTH 2490mm
COLOR Black
ANTENNA LENGTH 229mm



MODEL NAME *AN8919D-5704SM*

FREQUENCY 824~960MHz
 1710~2170MHz
GAIN -3dBi @ 824~960MHz
 1dBi @ 1710~2170MHz
VSWR 2 MAX.
POLARIZATION Linear Vertical
IMPEDANCE 50 ohms
CONNECTOR RP SMA Plug
COLOR Black
ANTENNA LENGTH 109mm



MODEL NAME *ANT001-0918178B-S12*

FREQUENCY 850~900MHz
 1800~1900MHz
GAIN <2.0dBi @ 850~900MHz
 <2.2dBi @ 1800~1900MHz
VSWR 2 MAX.
POLARIZATION Linear Vertical
IMPEDANCE 50 ohms
CONNECTOR RP SMA Plug
COAXIAL CABLE RG178
COLOR Black
ANTENNA LENGTH 108.5mm



NOTE: SOME SIZES, STYLES AND OPTIONS ARE NON-STANDARD, NON-CANCELLABLE AND NON-RETURNABLE.

GSM ANTENNA

MODEL NAME *ANT002-0918B-S1*

FREQUENCY	824~960MHz 1710~1990MHz
GAIN	1dBi
VSWR	2 MAX.
POLARIZATION	Linear Vertical
IMPEDANCE	50 ohms
CONNECTOR	RP SMA Plug
COLOR	Black
ANTENNA LENGTH	57mm



MODEL NAME *ANT003-09137B-S12*

FREQUENCY	900~950MHz
GAIN	2dBi
VSWR	2 MAX.
POLARIZATION	Linear Vertical
IMPEDANCE	50 ohms
CONNECTOR	RP SMA Plug
COAXIAL CABLE	RG137
COLOR	Black
ANTENNA LENGTH	157.4mm



MODEL NAME *ANT006-0918178B-S11*

FREQUENCY	850MHz~950MHz 1750MHz~1900MHz
GAIN	1dBi
VSWR	2 MAX.
POLARIZATION	Linear Vertical
IMPEDANCE	50 ohms
CONNECTOR	RP SMA Plug
COAXIAL CABLE	RG178
COLOR	Black
ANTENNA LENGTH	104.6mm



NOTE: SOME SIZES, STYLES AND OPTIONS ARE NON-STANDARD, NON-CANCELLABLE AND NON-RETURNABLE.

GSM ANTENNA

MODEL NAME *ANT007-09137B-S14*

FREQUENCY 900MHz~950MHz
GAIN 2dBi @ 900MHz
 4dBi @ 950MHz
VSWR <2
POLARIZATION Linear Vertical
IMPEDANCE 50 ohms
CONNECTOR RP SMA Plug
COAXIAL CABLE RG137
COLOR BLACK
ANTENNA LENGTH 139.9mm



MODEL NAME *ANT011-0821178B-S12*

FREQUENCY 800/900/1800/1900/2100MHz
GAIN 2dBi@894MHz
 1dBi@1850MHz
VSWR 3.5 MAX.@880~960MHz
 4 MAX.@1710~2170MHz
POLARIZATION Linear Vertical
IMPEDANCE 50 ohms
CONNECTOR RP SMA Plug
COAXIAL CABLE RG178
COLOR Black
ANTENNA LENGTH 196mm



MODEL NAME *ANT012-0821178B-T12*

FREQUENCY 800/900/1800/1900/2100MHz
GAIN 2dBi@900MHz
 1dBi@1850MHz
VSWR 3 MAX.@880MHz
 4 MAX.@1990MHz
POLARIZATION Linear Vertical
IMPEDANCE 50 ohms
CONNECTOR RP TNC Plug
COAXIAL CABLE RG178
COLOR Black
ANTENNA LENGTH 202mm



NOTE: SOME SIZES, STYLES AND OPTIONS ARE NON-STANDARD, NON-CANCELLABLE AND NON-RETURNABLE.

GSM ANTENNA

MODEL NAME	<i>ANT013-0821178B-S12</i>
FREQUENCY	800/900/1800/1900/2100MHz
GAIN	0.3dBi@824MHz 1.7dBi@1710MHz 2dBi@2170MHz
VSWR	4.5 MAX.@824~960MHz 4.5 MAX.@1710~2170MHz
POLARIZATION	Linear Vertical
IMPEDANCE	50 ohms
CONNECTOR	RP SMA Plug
COAXIAL CABLE	RG178
COLOR	Black
ANTENNA LENGTH	109mm

**MODEL NAME****MODEL NAME**

NOTE: SOME SIZES, STYLES AND OPTIONS ARE NON-STANDARD, NON-CANCELLABLE AND NON-RETURNABLE.

EMBEDDED ANTENNA

MODEL NAME *EA001-240000-115113G-I*

STANDARD	IEEE 802.11b/g Wireless LAN
FREQUENCY	2.4~2.5GHz
GAIN	1.86dBi
VSWR	2.0:1 Max.
ANTENNA TYPE	PIFA
POLARIZATION	Linear
PATTERN TYPE	Toroid
IMPEDANCE	115 ohms
CONNECTOR	I-PEX Plug
COAXIAL CABLE	ø1.13mm Mini Coaxial Cable
CABLE LENGTH	50mm
CABLE COLOR	Gray
ANTENNA PROFILE	40X6.3X4.3mm



MODEL NAME *EA005-245258-550113G-I*

STANDARD	IEEE 802.11 a/b/g Wireless LAN
FREQUENCY	2.4~2.48/5.15~5.35/5.725~5.85GHz
GAIN	-2.58/1.0/3.0dBi
VSWR	2.5:1/2.0:1
ANTENNA TYPE	PCB
POLARIZATION	Linear
PATTERN TYPE	Toroid
IMPEDANCE	50 ohms
CONNECTOR	I-PEX Plug
COAXIAL CABLE	ø1.13mm Mini Coaxial Cable
CABLE LENGTH	550mm
CABLE COLOR	Gray
ANTENNA PROFILE	44.6X6.5X0.4mm



NOTE: SOME SIZES, STYLES AND OPTIONS ARE NON-STANDARD, NON-CANCELLABLE AND NON-RETURNABLE.

MIMO ANTENNA**MODEL NAME** *MIMOA001-1M3174B-S1*

FREQUENCY 2.4~2.5GHz
GAIN 2dBi(Nominal)
VSWR <2:1
POLARIZATION Linear, Vertical
HPBW/HORIZONTAL 360
HPBW/VERTICAL 78(Typical)
MAX. POWER RATING 2W(CW)
IMPEDANCE 50 Ohms(Typical)
CONNECTOR RP SMA Plug
COAXIAL CABLE RG174 Coaxial Cable
CABLE LENGTH 1300mm
COLOR BLACK



NOTE: SOME SIZES, STYLES AND OPTIONS ARE NON-STANDARD, NON-CANCELLABLE AND NON-RETURNABLE.

LIGHTNING PROTECTORS

MODEL NAME **MSG-NPNP6G-23**

FREQUENCY	0~6.0GHz
CONNECTOR	N Plug to N Plug
IMPEDANCE	50 ohms
VSWR	≤1.5:1
VOLTAGE	DC 230V±20%
INSERTION LOSS	0.1dB/1GHz, 0.2dB/2GHz, 0.4dB/3GHz, 0.5dB/4GHz, 0.6dB/6GHz
POWER(@25 °C)	250W/300MHz, 160W/500MHz, 100W/900MHz, 75W/1.2GHz, 52W/1.9GHz, 42W/2.4GHz, 36W/3GHz, 10W/6GHz
WORKING TEMP.	-30°C ~ +85°C



MODEL NAME **MSG-NJNSJ6G-23**

FREQUENCY	0~6.0GHz
CONNECTOR	N Jack to N Jack
IMPEDANCE	50 ohms
VSWR	≤1.5:1
VOLTAGE	DC 230V±20%
INSERTION LOSS	0.1dB/1GHz, 0.2dB/2GHz, 0.4dB/3GHz, 0.5dB/4GHz, 0.6dB/6GHz
POWER(@25 °C)	250W/300MHz, 160W/500MHz, 100W/900MHz, 75W/1.2GHz, 52W/1.9GHz, 42W/2.4GHz, 36W/3GHz, 10W/6GHz
WORKING TEMP.	-30°C ~ +85°C



MODEL NAME **MSG-NJNP6G-20**

FREQUENCY	0~6.0GHz
CONNECTOR	N Jack to N Plug
IMPEDANCE	50 ohms
VSWR	≤1.5:1
VOLTAGE	DC 230V±20%
INSERTION LOSS	0.1dB/1GHz, 0.2dB/2GHz, 0.4dB/3GHz, 0.5dB/4GHz, 0.6dB/6GHz
POWER(@25 °C)	250W/300MHz, 160W/500MHz, 100W/900MHz, 75W/1.2GHz, 52W/1.9GHz, 42W/2.4GHz, 36W/3GHz, 10W/6GHz
WORKING TEMP.	-30°C ~ +85°C



NOTE: SOME SIZES, STYLES AND OPTIONS ARE NON-STANDARD, NON-CANCELLABLE AND NON-RETURNABLE.

LIGHTNING PROTECTORS

MODEL NAME **MSG-SRPJSRPP6G-23**

FREQUENCY	0~6.0GHz
CONNECTOR	RP SMA Jack to RP SMA Plug
IMPEDANCE	50 ohms
VSWR	≤1.5:1
VOLTAGE	DC 230V±20%
INSERTION LOSS	0.1dB/1GHz, 0.2dB/2GHz, 0.4dB/3GHz, 0.5dB/4GHz, 0.6dB/6GHz
POWER(@25 ° C)	250W/300MHz, 160W/500MHz, 100W/900MHz, 75W/1.2GHz, 52W/1.9GHz, 42W/2.4GHz, 36W/3GHz, 10W/6GHz
WORKING TEMP.	-30°C ~ +85°C



MODEL NAME **MSG-TRPJTRPP6G-23**

FREQUENCY	0~6.0GHz
CONNECTOR	RP TNC Jack to RP TNC Plug
IMPEDANCE	50 ohms
VSWR	≤1.5:1
VOLTAGE	DC 230V±20%
INSERTION LOSS	0.1dB/1GHz, 0.2dB/2GHz, 0.4dB/3GHz, 0.5dB/4GHz, 0.6dB/6GHz
POWER(@25 ° C)	250W/300MHz, 160W/500MHz, 100W/900MHz, 75W/1.2GHz, 52W/1.9GHz, 42W/2.4GHz, 36W/3GHz, 10W/6GHz
WORKING TEMP.	-30°C ~ +85°C



NOTE: SOME SIZES, STYLES AND OPTIONS ARE NON-STANDARD, NON-CANCELLABLE AND NON-RETURNABLE.

2.4 ~ 2.5 GHz 4dBi Mini Omni-Directional Antenna

MODEL NAME MOA001-2425W-N04

Introductions

These antennas are professionally engineered and manufactured with the highest industry quality at the lowest possible price providing extreme value. This Mesh Omni antenna is designed for the 2.4GHz ISM band and provides superb performance in IEEE 802.11b/g WiFi and Bluetooth applications. This mesh omni antenna was specifically designed for deployment with mesh Wi-Fi access points and networks. It is made of UV protective material and is fully waterproof including the integrated N plug.

Applications

- 2.4~2.5GHz ISM Band
- IEEE 802.11b, 802.11g, 802.11n Wireless LAN
- Directional and multipoint applications
- Bluetooth
- Public Wireless Hotspot
- WiFi, RFID
- Wireless Video Systems

Features

- Superior performance
- Light weight
- All weather operation
- DC Short lightning protection
- Installed for vertical
- Includes tilt and swivel mast mount

Specifications

Frequency Range	2400 ~ 2500MHz
VSWR	≤ 1.5
Antenna Type	Collinear
Gain	4dBi
Polarization	Vertical
Maximum Power	50W
Vertical Beam-with	22 °
Horizontal Beam-with	360 °
Impedance	50 ohms
Connector	N plug
Length	330mm (12.992")
Diameter	17mm (0.669")
Weight	65g
Wind Survival	>150MPH
Radome Material	White Fiberglass
Operating Temperature	-40 ~ +80°C
Mounting Pipe	17 ~ 20mm



NOTE: SOME SIZES, STYLES AND OPTIONS ARE NON-STANDARD, NON-CANCELLABLE AND NON-RETURNABLE.

2.4 ~ 2.5 GHz 6dBi Mini Omni-Directional Antenna

MODEL NAME MOA002-2425W-N06

Introductions

These antennas are professionally engineered and manufactured with the highest industry quality at the lowest possible price providing extreme value. This Mesh Omni antenna is designed for the 2.4GHz ISM band and provides superb performance in IEEE 802.11b/g WiFi and Bluetooth applications. This mesh omni antenna was specifically designed for deployment with mesh Wi-Fi access points and networks. It is made of UV protective material and is fully waterproof including the integrated N plug.

Applications

- 2.4~2.5GHz ISM Band
- IEEE 802.11b, 802.11g, 802.11n Wireless LAN
- Directional and multipoint applications
- Bluetooth
- Public Wireless Hotspot
- WiFi, RFID
- Wireless Video Systems

Features

- Superior performance
- Light weight
- All weather operation
- DC Short lightning protection
- Installed for vertical
- Includes tilt and swivel mast mount

Specifications

Frequency Range	2400 ~ 2500MHz
VSWR	≤ 1.5
Return Loss	$\geq -12\text{db}$
Antenna Type	Collinear
Gain	6dBi
Polarization	Vertical
Maximum Power	50W
Vertical Beam-with	18 °
Horizontal Beam-with	360 °
Impedance	50 ohms
Connector	N plug
Length	395mm (15.551")
Diameter	17mm (0.669")
Weight	180g
Wind Survival	>150MPH
Radome Material	White Fiberglass
Operating Temperature	-40 ~ +80°C
Mounting Pipe	17 ~ 20mm



NOTE: SOME SIZES, STYLES AND OPTIONS ARE NON-STANDARD, NON-CANCELLABLE AND NON-RETURNABLE.

2.4 ~ 2.5 GHz 8dBi Mesh Omni-Directional Antenna

MODEL NAME MOA003-2425W-N08

Introductions

These antennas are professionally engineered and manufactured with the highest industry quality at the lowest possible price providing extreme value. This Mesh Omni antenna is designed for the 2.4GHz ISM band and provides superb performance in IEEE 802.11b/g WiFi and Bluetooth applications. This mesh omni antenna was specifically designed for deployment with mesh Wi-Fi access points and networks. It is made of UV protective material and is fully waterproof including the integrated N plug.

Applications

- 2.4~2.5GHz ISM Band
- IEEE 802.11b, 802.11g, 802.11n Wireless LAN
- Directional and multipoint applications
- Bluetooth
- Public Wireless Hotspot
- WiFi, RFID
- Wireless Video Systems

Features

- Superior performance
- Light weight
- All weather operation
- DC Short lightning protection
- Installed for vertical
- Includes tilt and swivel mast mount

Specifications

Frequency Range	2400 ~ 2500MHz
VSWR	≤ 1.5
Return Loss	≥ -12db
Antenna Type	Collinear
Gain	8dBi
Polarization	Vertical
Maximum Power	50W
Vertical Beam-with	15 °
Horizontal Beam-with	360 °
Impedance	50 ohms
Connector	N plug
Length	520mm
Diameter	20mm
Weight	190g
Wind Survival	>150MPH
Radome Material	White Fiberglass
Operating Temperature	-40°C ~ +80°C
Mounting Pipe	20 ~ 23mm



NOTE: SOME SIZES, STYLES AND OPTIONS ARE NON-STANDARD, NON-CANCELLABLE AND NON-RETURNABLE.

2.4 ~ 2.5 GHz 10dBi Mini Omni-Directional Antenna

MODEL NAME MOA004-2425W-N010

Introductions

These antennas are professionally engineered and manufactured with the highest industry quality at the lowest possible price providing extreme value. This Mesh Omni antenna is designed for the 2.4GHz ISM band and provides superb performance in IEEE 802.11b/g WiFi and Bluetooth applications. This mesh omni antenna was specifically designed for deployment with mesh Wi-Fi access points and networks. It is made of UV protective material and is fully waterproof including the integrated N plug.

Applications

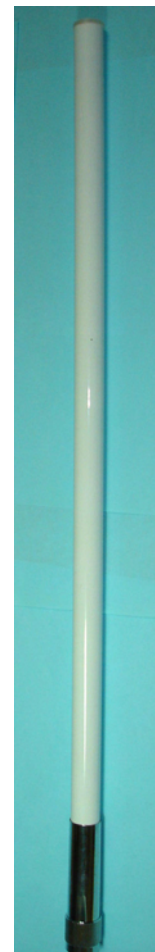
- 2.4~2.5GHz ISM Band
- IEEE 802.11b, 802.11g, 802.11n Wireless LAN
- Directional and multipoint applications
- Bluetooth
- Public Wireless Hotspot
- WiFi, RFID
- Wireless Video Systems

Features

- Superior performance
- Light weight
- All weather operation
- DC Short lightning protection
- Installed for vertical
- Includes tilt and swivel mast mount

Specifications

Frequency Range	2400 ~ 2500MHz
VSWR	≤ 1.5
Return Loss	≥ -12dB
Antenna Type	Collinear
Gain	10dBi
Polarization	Vertical
Maximum Power	50W
Vertical Beam-with	12 °
Horizontal Beam-with	360 °
Impedance	50 ohms
Connector	N plug
Length	770mm (30.315")
Diameter	17mm (0.669")
Weight	140g
Wind Survival	>150MPH
Radome Material	White Fiberglass
Operating Temperature	-40 ~ +80°C
Mounting Pipe	17 ~ 20mm



NOTE: SOME SIZES, STYLES AND OPTIONS ARE NON-STANDARD, NON-CANCELLABLE AND NON-RETURNABLE.

2.4 ~ 2.5 GHz 2dBi Mini Omni-Directional Outdoor Antenna

MODEL NAME MOA005-2425W-N02

Introductions

These antennas are professionally engineered and manufactured with the highest industry quality at the lowest possible price providing extreme value. This Mesh Omni antenna is designed for the 2.4GHz ISM band and provides superb performance in IEEE 802.16, 802.20 Wireless LAN applications. This mesh omni antenna was specifically designed for deployment with mesh Wi-Fi access points and networks. It is made of UV protective material and is fully waterproof including the integrated N plug.

Applications

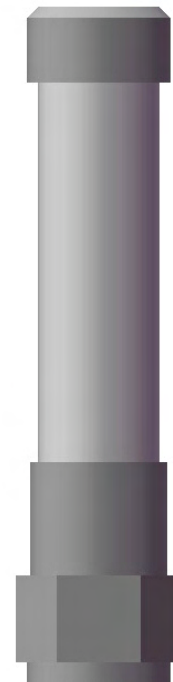
- 2.4~2.5GHz ISM Band
- IEEE 802.16, 802.20 Wireless LAN
- Directional and multipoint applications
- Public Wireless Hotspot
- Wi-Max Technology
- Wireless Video Systems

Features

- Superior performance
- The weight is light
- Good appearance designs
- DC Short lightning protection
- Support is up and down or so to adjust
- Outdoor antenna for public hot-spots
- ROHS compliant
- Waterproof grade: IP65

Specifications

Frequency Range	2400 ~ 2500MHz
VSWR	≤ 1.5
Antenna Type	Collinear
Gain	2dBi
Polarization	Vertical
Maximum Power	50W
Vertical Beam-with	80 °
Horizontal Beam-with	360 °
Impedance	50 ohms
Connector	N plug
Length	150mm (5.906")
Diameter	17mm (0.669")
Weight	50g
Wind Survival	>150MPH
Radome Material	White Fiberglass
Operating Temperature	-40 ~ +80°C
Mounting	20 ~ 23mm



NOTE: SOME SIZES, STYLES AND OPTIONS ARE NON-STANDARD, NON-CANCELLABLE AND NON-RETURNABLE.

2.4 ~ 2.5 GHz 8dBi Mesh Omni-Directional Antenna

MODEL NAME **MOA006-242508S-DT7-N08**

Introductions

These antennas are professionally engineered and manufactured with the highest industry quality at the lowest possible price providing extreme value. This Mesh Omni antenna is designed for the 2.4GHz ISM band and provides superb performance in IEEE 802.11b/g WiFi and Bluetooth applications. This mesh omni antenna was specifically designed for deployment with mesh Wi-Fi access points and networks. It is made of UV protective material and is fully waterproof including the integrated N plug.

Applications

- 2.4~2.5GHz ISM Band
- IEEE 802.11b, 802.11g, 802.11n Wireless LAN
- Directional and multipoint applications
- Bluetooth
- Public Wireless Hotspot
- Wi-Fi, RFID
- Wireless Video Systems

Features

- Superior performance
- The weight is light
- All weather operation
- DC Short lightning protection
- Installed for vertical
- Includes tilt and swivel mast mount

Specifications

Frequency Range	2400 ~ 2500MHz
VSWR	≤ 1.5
Return Loss	≥ -12dB
Antenna Type	Collinear
Gain	8dBi
Polarization	Vertical
Maximum Power	50W
Vertical Beam-with	15 °
Horizontal Beam-with	360 °
Down tilt	7 °
Impedance	50 ohms
Connector	N plug
Length	480mm
Diameter	20mm
Weight	190g
Wind Survival	>150MPH
Radome Material	White Fiberglass
Operating Temperature	-40 ~ +80°C
Clamp	U-bolt



NOTE: SOME SIZES, STYLES AND OPTIONS ARE NON-STANDARD, NON-CANCELLABLE AND NON-RETURNABLE.

www.mmtmachrone.com

USA TEL: 1-510-979-2188
FAX: 1-510-979-2189

TAIWAN TEL: 886-2-2755-3193
FAX: 886-2-2784-5109

SINGAPORE TEL: 65-6274-0566
FAX: 65-6274-7891

2.4 ~ 2.5 GHz 6dBi Omni-Directional Antenna

MODEL NAME OA001-2425W-N26

Introductions

These antennas are professionally engineered and manufactured with the highest industry quality at the lowest possible price providing extreme value. This Omni antenna is designed for the 2.4GHz ISM band, supporting 2.4 to 2.483 GHz and provides superb performance in IEEE 802.11b/g WiFi and Bluetooth applications.

The antenna includes mounting bracket and hardware for up to 2" OD masts. Made with fiberglass and comes with an integrated N jack.

Applications

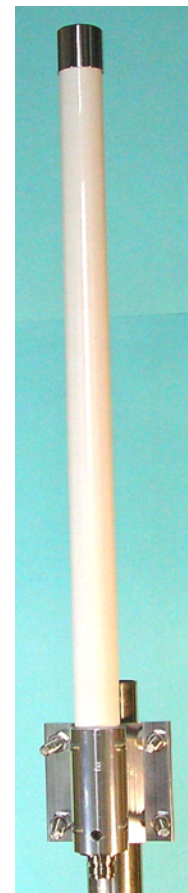
- 2.4~2.5GHz ISM Band
- IEEE 802.11b, 802.11g, 802.11n Wireless LAN
- Directional and multipoint applications
- Bluetooth
- Public Wireless Hotspot
- WiFi, RFID
- Wireless Video Systems

Features

- Superior performance
- Light weight
- All weather operation
- DC Short lightning protection
- Installed for vertical
- Includes tilt and swivel mast mount

Specifications

Frequency Range	2400 ~ 2500MHz
VSWR	≤ 1.5
Antenna Type	Collinear
Gain	6dBi
Polarization	Vertical
Maximum Power	50W
Vertical Beam-with	18 °
Horizontal Beam-with	360 °
Impedance	50 ohms
Connector	N jack
Length	460mm (18.110")
Diameter	25mm (0.984")
Weight	375g
Wind Survival	150MPH
Radome Material	White Fiberglass
Operating Temperature	-40 ~ +80°C
Clamps	U-bolt
Mounting Pipe	32 ~ 45mm



NOTE: SOME SIZES, STYLES AND OPTIONS ARE NON-STANDARD, NON-CANCELLABLE AND NON-RETURNABLE.

2.4 ~ 2.5 GHz 8dBi Omni-Directional Antenna

MODEL NAME OA002-2425W-N28

Introductions

These antennas are professionally engineered and manufactured with the highest industry quality at the lowest possible price providing extreme value. This Omni antenna is designed for the 2.4GHz ISM band, supporting 2.4 to 2.483 GHz and provides superb performance in IEEE 802.11b/g WiFi and Bluetooth applications.

The antenna includes mounting bracket and hardware for up to 2" OD masts. Made with fiberglass and comes with an integrated N jack.

Applications

- 2.4~2.5GHz ISM Band
- IEEE 802.11b, 802.11g, 802.11n Wireless LAN
- Directional and multipoint applications
- Bluetooth
- Public Wireless Hotspot
- WiFi, RFID
- Wireless Video Systems

Features

- Superior performance
- Light weight
- All weather operation
- DC Short lightning protection
- Installed for vertical
- Includes tilt and swivel mast mount

Specifications

Frequency Range	2400 ~ 2500MHz
VSWR	≤ 1.5
Return Loss	≥ -15db
Antenna Type	Collinear
Gain	8dBi
Polarization	Vertical
Maximum Power	50W
Vertical Beam-with	15 °
Horizontal Beam-with	360 °
Impedance	50 ohms
Connector	N jack
Length	560mm (22.047")
Diameter	25mm (0.984")
Weight	450g
Wind Survival	>150MPH
Radome Material	White Fiberglass
Operating Temperature	-40°C ~ +80°C
Clamps	U-bolt



NOTE: SOME SIZES, STYLES AND OPTIONS ARE NON-STANDARD, NON-CANCELLABLE AND NON-RETURNABLE.

www.mmtmachrone.com

USA TEL: 1-510-979-2188
FAX: 1-510-979-2189

TAIWAN TEL: 886-2-2755-3193
FAX: 886-2-2784-5109

SINGAPORE TEL: 65-6274-0566
FAX: 65-6274-7891

2.4 ~ 2.5 GHz 10dBi Omni-Directional Antenna

MODEL NAME OA003-2425W-N210

Introductions

These antennas are professionally engineered and manufactured with the highest industry quality at the lowest possible price providing extreme value. This Omni antenna is designed for the 2.4GHz ISM band, supporting 2.4 to 2.483 GHz and provides superb performance in IEEE 802.11b/g WiFi and Bluetooth applications.

The antenna includes mounting bracket and hardware for up to 2" OD masts. Made with fiberglass and comes with an integrated N jack.

Applications

- 2.4~2.5GHz ISM Band
- IEEE 802.11b, 802.11g, 802.11n Wireless LAN
- Directional and multipoint applications
- Bluetooth
- Public Wireless Hotspot
- WiFi, RFID
- Wireless Video Systems

Features

- Superior performance
- Light weight
- All weather operation
- DC Short lightning protection
- Installed for vertical
- Includes tilt and swivel mast mount

Specifications

Frequency Range	2400 ~ 2500MHz
VSWR	≤ 1.5
Antenna Type	Collinear
Gain	10dBi
Polarization	Vertical
Maximum Power	50W
Vertical Beam-with	10 °
Horizontal Beam-with	360 °
Impedance	50 ohms
Connector	N jack
Length	890mm
Diameter	24mm
Weight	500g
Wind Survival	>150MPH
Radome Material	White Fiberglass
Operating Temperature	-40 ~ +80°C
Clamps	U-bolt
Mounting Pipe	32 ~ 45mm



NOTE: SOME SIZES, STYLES AND OPTIONS ARE NON-STANDARD, NON-CANCELLABLE AND NON-RETURNABLE.

2.4 ~ 2.5 GHz 12dBi Omni-Directional Antenna

MODEL NAME OA004-2425W-N212

Introductions

These antennas are professionally engineered and manufactured with the highest industry quality at the lowest possible price providing extreme value. This Omni antenna is designed for the 2.4GHz ISM band, supporting 2.4 to 2.483 GHz and provides superb performance in IEEE 802.11b/g WiFi and Bluetooth applications.

The antenna includes mounting bracket and hardware for up to 2" OD masts. Made with fiberglass and comes with an integrated N jack.

Applications

- 2.4~2.5GHz ISM Band
- IEEE 802.11b, 802.11g, 802.11n Wireless LAN
- Directional and multipoint applications
- Bluetooth
- Public Wireless Hotspot
- WiFi, RFID
- Wireless Video Systems

Features

- Superior performance
- Light weight
- All weather operation
- DC Short lightning protection
- Installed for vertical
- Includes tilt and swivel mast mount

Specifications

Frequency Range	2400 ~ 2500MHz
VSWR	≤ 1.3
Antenna Type	Collinear
Gain	12dBi
Polarization	Vertical
Maximum Power	50W
Vertical Beam-with	8 °
Horizontal Beam-with	360 °
Impedance	50 ohms
Connector	N jack
Length	1050mm (41.339")
Diameter	25mm (0.984")
Weight	700g
Wind Survival	>150MPH
Radome Material	White Fiberglass
Operating Temperature	-40 ~ +80°C
Clamps	U-bolt
Mounting Pipe	32 ~ 45mm



NOTE: SOME SIZES, STYLES AND OPTIONS ARE NON-STANDARD, NON-CANCELLABLE AND NON-RETURNABLE.

2.4 ~ 2.5 GHz 15dBi Omni-Directional Antenna

MODEL NAME OA005-2425W-N215

Introductions

These antennas are professionally engineered and manufactured with the highest industry quality at the lowest possible price providing extreme value. This Omni antenna is designed for the 2.4GHz ISM band, supporting 2.4 to 2.483 GHz and provides superb performance in IEEE 802.11b/g WiFi and Bluetooth applications.

The antenna includes mounting bracket and hardware for up to 2" OD masts. Made with fiberglass and comes with an integrated N jack.

Applications

- 2.4~2.5GHz ISM Band
- IEEE 802.11b, 802.11g, 802.11n Wireless LAN
- Directional and multipoint applications
- Bluetooth
- Public Wireless Hotspot
- WiFi, RFID
- Wireless Video Systems

Features

- Superior performance
- Light weight
- All weather operation
- DC Short lightning protection
- Installed for vertical
- Includes tilt and swivel mast mount

Specifications

Frequency Range	2400 ~ 2500MHz
VSWR	≤ 1.3
Return Loss	≥ -20db
Antenna Type	Collinear
Gain	15dBi
Polarization	Vertical
Maximum Power	50W
Vertical Beam-with	6 °
Horizontal Beam-with	360 °
Impedance	50 ohms
Connector	N jack
Length	1485mm (58.465")
Diameter	68mm (2.677")
Weight	710g
Wind Survival	>150MPH
Radome Material	White Fiberglass
Operating Temperature	-40 ~ +80°C
Clamps	U-bolt
Mounting Pipe	32 ~ 45mm



Aggrandiz brace



NOTE: SOME SIZES, STYLES AND OPTIONS ARE NON-STANDARD, NON-CANCELLABLE AND NON-RETURNABLE.

5.4 ~ 5.9 GHz 8dBi Omni-Directional Antenna

MODEL NAME OA006-5459W-N28

Introductions

These antennas are professionally engineered and manufactured with the highest industry quality at the lowest possible price providing extreme value. This Omni antenna is designed for the 5.8GHz ISM band, supporting 5.4 to 5.9 GHz and provides superb performance in IEEE 802.11a WiFi and Bluetooth applications.

The antenna includes mounting bracket and hardware for up to 2" OD masts. Made with fiberglass and comes with an integrated N jack.

Applications

- 5.4~5.9GHz Band Applications
- 5.8GHz UNII, ISM Applications
- 5.8GHz Wireless LAN Systems
- Directional and multipoint applications
- Bluetooth, WiFi, CDMA, RFID
- Public Wireless Hotspot
- Wireless Video Systems

Features

- Superior performance
- Light weight & mini size
- All weather operation
- DC Short lightning protection
- Installed for vertical
- Includes tilt and swivel mast mount

Specifications

Frequency Range	5400 ~ 5900MHz
VSWR	≤ 1.5
Antenna Type	Collinear
Gain	8dBi
Polarization	Vertical
Maximum Power	100W
Vertical Beam-with	15 °
Horizontal Beam-with	360 °
Impedance	50 ohms
Connector	N jack
Length	370mm (14.567")
Diameter	25mm (0.984")
Weight	410g
Wind Survival	>150MPH
Radome Material	White Fiberglass
Operating Temperature	-40 ~ +80°C
Clamps	U-bolt
Mounting Pipe	32 ~ 45mm



NOTE: SOME SIZES, STYLES AND OPTIONS ARE NON-STANDARD, NON-CANCELLABLE AND NON-RETURNABLE.

5.4 ~ 5.9 GHz 10dBi Omni-Directional Antenna

MODEL NAME OA007-5459W-N210

Introductions

These antennas are professionally engineered and manufactured with the highest industry quality at the lowest possible price providing extreme value. This Omni antenna is designed for the 5.8GHz ISM band, supporting 5.4 to 5.9 GHz and provides superb performance in IEEE 802.11a WiFi and Bluetooth applications.

The antenna includes mounting bracket and hardware for up to 2" OD masts. Made with fiberglass and comes with an integrated N jack.

Applications

- 5.4~5.9GHz Band Applications
- 5.8GHz UNII, ISM Applications
- 5.8GHz Wireless LAN Systems
- Directional and multipoint applications
- Bluetooth, WiFi, CDMA, RFID
- Public Wireless Hotspot
- Wireless Video Systems

Features

- Superior performance
- Light weight & mini size
- All weather operation
- DC Short lightning protection
- Installed for vertical
- Includes tilt and swivel mast mount

Specifications

Frequency Range	5400 ~ 5900MHz
VSWR	≤ 1.5
Antenna Type	Collinear
Gain	10dBi
Polarization	Vertical
Maximum Power	100W
Vertical Beam-with	10 °
Horizontal Beam-with	360 °
Impedance	50 ohms
Connector	N jack
Length	530mm (20.866")
Diameter	25mm (0.984")
Weight	430g
Wind Survival	>150MPH
Radome Material	White Fiberglass
Operating Temperature	-40 ~ +80°C
Clamps	U-bolt
Mounting Pipe	32 ~ 45mm



NOTE: SOME SIZES, STYLES AND OPTIONS ARE NON-STANDARD, NON-CANCELLABLE AND NON-RETURNABLE.

5.4 ~ 5.9 GHz 12dBi Omni-Directional Antenna

MODEL NAME OA008-5459W-N212

Introductions

These antennas are professionally engineered and manufactured with the highest industry quality at the lowest possible price providing extreme value. This Omni antenna is designed for the 5.8GHz ISM band, supporting 5.4 to 5.9 GHz and provides superb performance in IEEE 802.11a WiFi and Bluetooth applications.

The antenna includes mounting bracket and hardware for up to 2" OD masts. Made with fiberglass and comes with an integrated N jack.

Applications

- 5.4~5.9GHz Band Applications
- 5.8GHz UNII, ISM Applications
- 5.8GHz Wireless LAN Systems
- Directional and multipoint applications
- Bluetooth, WiFi, CDMA, RFID
- Public Wireless Hotspot
- Wireless Video Systems

Features

- Superior performance
- Light weight & mini size
- All weather operation
- DC Short lightning protection
- Installed for vertical
- Includes tilt and swivel mast mount

Specifications

Frequency Range	5400 ~ 5900MHz
VSWR	≤ 1.5
Antenna Type	Collinear
Gain	12dBi
Polarization	Vertical
Maximum Power	100W
Vertical Beam-width	8 °
Horizontal Beam-width	360 °
Impedance	50 ohms
Connector	N jack
Length	620mm (24.409")
Diameter	25mm (0.984")
Weight	510g
Wind Survival	>150MPH
Radome Material	White Fiberglass
Operating Temperature	-40 ~ +80°C
Clamps	U-bolt
Mounting Pipe	32 ~ 45mm



NOTE: SOME SIZES, STYLES AND OPTIONS ARE NON-STANDARD, NON-CANCELLABLE AND NON-RETURNABLE.

4.9 ~ 5.1 GHz 10dBi Omni-Directional Antenna

MODEL NAME OA009-4951W-N210

Introductions

These antennas are professionally engineered and manufactured with the highest industry quality at the lowest possible price providing extreme value. This Omni antenna is designed for the 5.0GHz ISM band, supporting 4.9 to 5.1 GHz and provides superb performance in IEEE 802.11a WiFi applications.

The antenna includes mounting bracket and hardware for up to 2" OD masts. Made with fiberglass and comes with an integrated N jack.

Applications

- 4.9~5.1GHz Band Applications
- Homeland Security
- Public Safety Services: Fire, Police, Security
- Rapid Deployment Installations
- Large Scale WLL
- WLAN / Hot Spot
- WLAN / On-Scene Incident Command

Features

- Superior performance
- Light weight & mini size
- All weather operation
- DC Short lightning protection
- Installed for vertical
- Includes tilt and swivel mast mount

Specifications

Frequency Range	4900 ~ 5100MHz
VSWR	≤ 1.5
Antenna Type	Collinear
Gain	10dBi
Polarization	Vertical
Maximum Power	100W
Vertical Beam-with	10 °
Horizontal Beam-with	360 °
Impedance	50 ohms
Connector	N jack
Length	530mm (20.866")
Diameter	25mm (0.984")
Weight	480g
Wind Survival	>150MPH
Radome Material	White Fiberglass
Operating Temperature	-40 ~ +80°C
Clamps	U-bolt
Mounting Pipe	32 ~ 45mm



NOTE: SOME SIZES, STYLES AND OPTIONS ARE NON-STANDARD, NON-CANCELLABLE AND NON-RETURNABLE.

5.1 ~ 5.9 GHz 23dBi Wide Band Directional Panel Antenna

MODEL NAME PA001-5159W-N223

Introductions

These antennas are professionally engineered and manufactured with the highest industry quality at the lowest possible price providing extreme value. The Panel antenna is designed for the 5.1 ~ 5.8GHz ISM band, supporting 5.4 to 5.9 GHz and provides superb performance in IEEE 802.11a WiMAX.

The antenna includes mounting bracket and hardware for up to 2" OD masts. Made with Apparel is ABS(UV) and Metal with an integrated N jack.

Applications

- 5.1~5.9 GHz ISM Band
- 5.3 GHz Band Applications
- 5.4 GHz Band Applications
- 5.8 GHz UNII Applications
- IEEE802.11a Wireless LAN
- Unlicensed European 5.4 GHz Band Applications
- WiMAX Technology
- 5.8GHz Wireless Video Systems

Features

- Superior performance
- Light weight
- All weather operation
- DC Short lightning protection
- Installed for vertical
- Includes tilt and swivel mast mount
- Frequency Ultra-wide
- Can be installed for either vertical or horizontal polarization

Specifications

Frequency Range	5100 ~ 5900MHz
VSWR	≤ 1.5
Return Loss	≥ -15db
Antenna Type	PCB patch array
Gain	23dBi
Polarization	Vertical or Horizontal
Maximum Power	50W
Vertical Beam-with	8 °
Horizontal Beam-with	8 °
Impedance	50 ohms
Connector	N jack
Length	370x370mm
Depth	35mm
Weight	700g
Wind Survival	>120MPH
Radome Material	ABS+UV resistance
Operating Temperature	-40 ~ +80°C
Down-tilt	"L" Style 0-30 °
Mounting/Clamps	32 ~ 45mm/U-bolt



NOTE: SOME SIZES, STYLES AND OPTIONS ARE NON-STANDARD, NON-CANCELLABLE AND NON-RETURNABLE.