

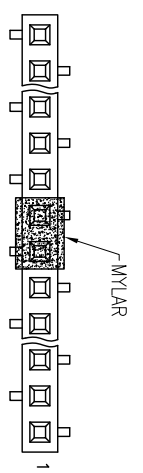
REVISIONS				
SYM	DESCRIPTION	DATE	APPROVED	SYM
Δ				Δ
Δ				Δ

SYM	DESCRIPTION	DATE	APPROVED	SYM
Δ				Δ

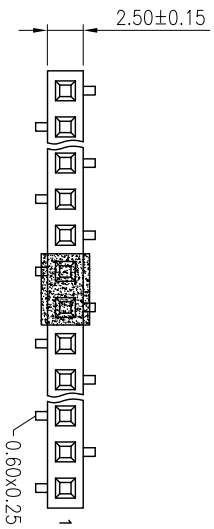
****CUSTOMER DRAWING FOR REFERENCE ONLY, SAMPLES APPROVAL ARE REQUIRED!!**

DATE	APPROVED
07/6	

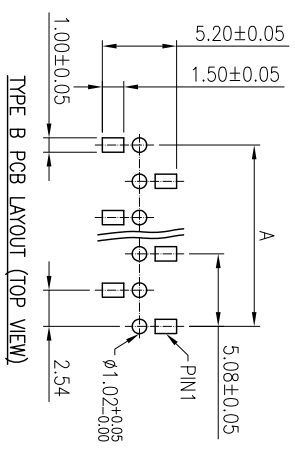
PART NO.	DIMENSION	
	A	B
PRd710-Pt0201GfN	2.54	5.33
PRd710-Pt0301GfN	5.08	7.87
PRd710-Pt0401GfN	7.62	10.41
PRd710-Pt0501GfN	10.16	12.95
PRd710-Pt0601GfN	12.70	15.49
PRd710-Pt0701GfN	15.24	18.03
PRd710-Pt0801GfN	17.78	20.57
PRd710-Pt0901GfN	20.32	23.11
PRd710-Pt1001GfN	22.86	25.65
PRd710-Pt1101GfN	25.40	28.19
PRd710-Pt1201GfN	27.94	30.73
PRd710-Pt1301GfN	30.48	33.27
PRd710-Pt1401GfN	33.02	35.81
PRd710-Pt1501GfN	35.56	38.35
PRd710-Pt1601GfN	38.10	40.89
PRd710-Pt1701GfN	40.64	43.43
PRd710-Pt1801GfN	43.18	45.97
PRd710-Pt1901GfN	45.72	48.51
PRd710-Pt2001GfN	48.26	51.05
PRd710-Pt2101GfN	50.80	53.59
PRd710-Pt2201GfN	53.34	56.13
PRd710-Pt2301GfN	55.88	58.67
PRd710-Pt2401GfN	58.42	61.21
PRd710-Pt2501GfN	60.96	63.75
PRd710-Pt2601GfN	63.50	66.29
PRd710-Pt2701GfN	66.04	68.83
PRd710-Pt2801GfN	68.58	71.37
PRd710-Pt2901GfN	71.12	73.91
PRd710-Pt3001GfN	73.66	76.45
PRd710-Pt3101GfN	76.20	78.99
PRd710-Pt3201GfN	78.74	81.53
PRd710-Pt3301GfN	81.28	84.07
PRd710-Pt3401GfN	83.82	86.61
PRd710-Pt3501GfN	86.36	89.15
PRd710-Pt3601GfN	88.90	91.69
PRd710-Pt3701GfN	91.44	94.23
PRd710-Pt3801GfN	93.98	96.77
PRd710-Pt3901GfN	96.52	99.31
PRd710-Pt4001GfN	99.06	101.85



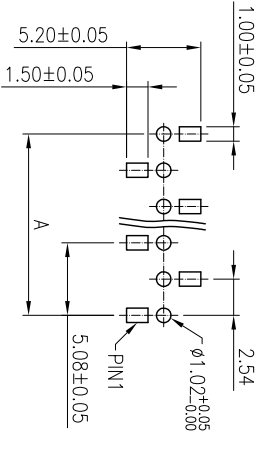
TYPE B



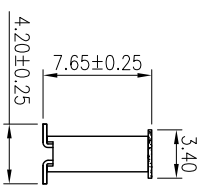
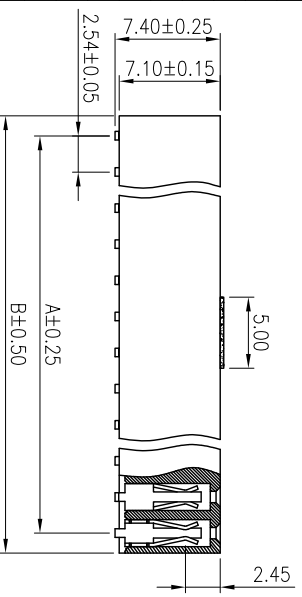
TYPE A



TYPE B PCB LAYOUT (TOP VIEW)



TYPE A PCB LAYOUT (TOP VIEW)



SPECIFICATION
 CURRENT RATING: 3 AMP MAX.
 VOLTAGE RATING: 230V
 INSULATOR RESISTANCE: 5000MΩ MIN.
 CONTACT RESISTANCE: 20mΩ MAX.
 DIELECTRIC WITHSTANDING VOLTAGE: AC 500V/MINUTE
 OPERATING TEMPERATURE: -40°C~+105°C.
 CONTACT MATERIAL: PHOSPHOR BRONZE
 INSULATOR MATERIAL: NYLON 6T +GLASS FIBRE UL94V-0.
 COLOR: BLACK

TOLERANCES UNLESS OTHERWISE SPECIFIED		SIGNATURES		DATE		MODEL	
±0.25		DRAWN	AARON	19/DEC/16'		PIN RECEPTACLE	
		CHECKED	NATHAN	19/DEC/16'		PRd710-Pt____01GfN--	
SYMBOL	UNIT	SCALE	APPROVALS				
Δ	mm	2/1					

MMT CORPORATION