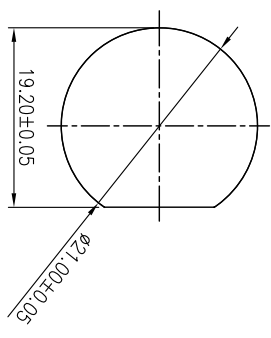
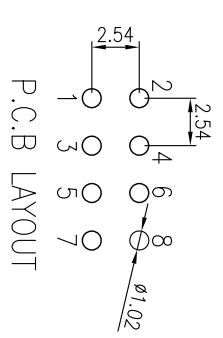
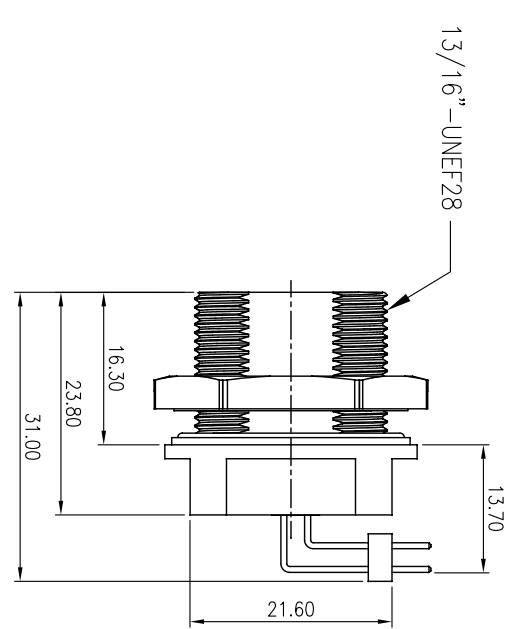
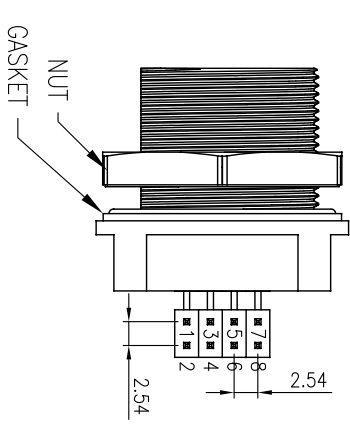


VI.1 NOTE: THIS DEVICE IS ROHS COMPLIANT.

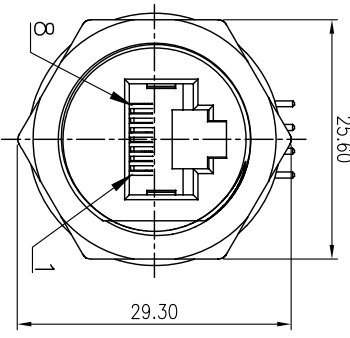
REVISIONS					
SYM	DESCRIPTION	DATE	APPROVED	SYM	DESCRIPTION
Δ				Δ	
Δ				Δ	
**CUSTOMER DRAWING FOR REFERENCE ONLY, SAMPLES APPROVAL ARE REQUIRED!!					
					084



PANEL CUT-OUT
PANEL THICKNESS: 1.50~6.00mm



P.C.B LAYOUT



- NOTE:
1. HOUSING&NUT: ENGINEERING THERMOPLASTIC UL 94V-0
 2. CONTACTS: PHOSPHOR BRONZE, GOLD PLATING OVER NICKEL
 3. GASKET: SILICONE.
 4. PIN HEADER: BRASS, GOLD PLATING OVER NICKEL, PITCH: 2.54mm
 5. NUT INSTALLATION TORQUE RANGE: 16~18kg-cm.
 6. WATERPROOF RANGE: IP68, MATED

TOLERANCES UNLESS OTHERWISE SPECIFIED		SIGNATURES		DATE		MODEL	
±0.25		DRAWN	ABER	29/MAY/19'		TITLE	RJ45 WATERPROOF CONNECTOR
		CHECKED	AARON	29/MAY/19'		NO.	
SYMBOL	UNIT	SCALE	APPROVALS				
Δ	mm	2/1		RWP-33P			

MMT CORPORATION